

THIS DRAWING IS UNPUBLISHED. RELEASED FOR PUBLICATION  
 © COPYRIGHT BY TYCO ELECTRONICS CORPORATION. ALL RIGHTS RESERVED.

LOC	DIST	REVISIONS					
		P	LTR	DESCRIPTION	DATE	DWN	APVD
CM	00		C	REVISED PER ECO-08-014350	10JUN08	HMR	CC

D

C

B

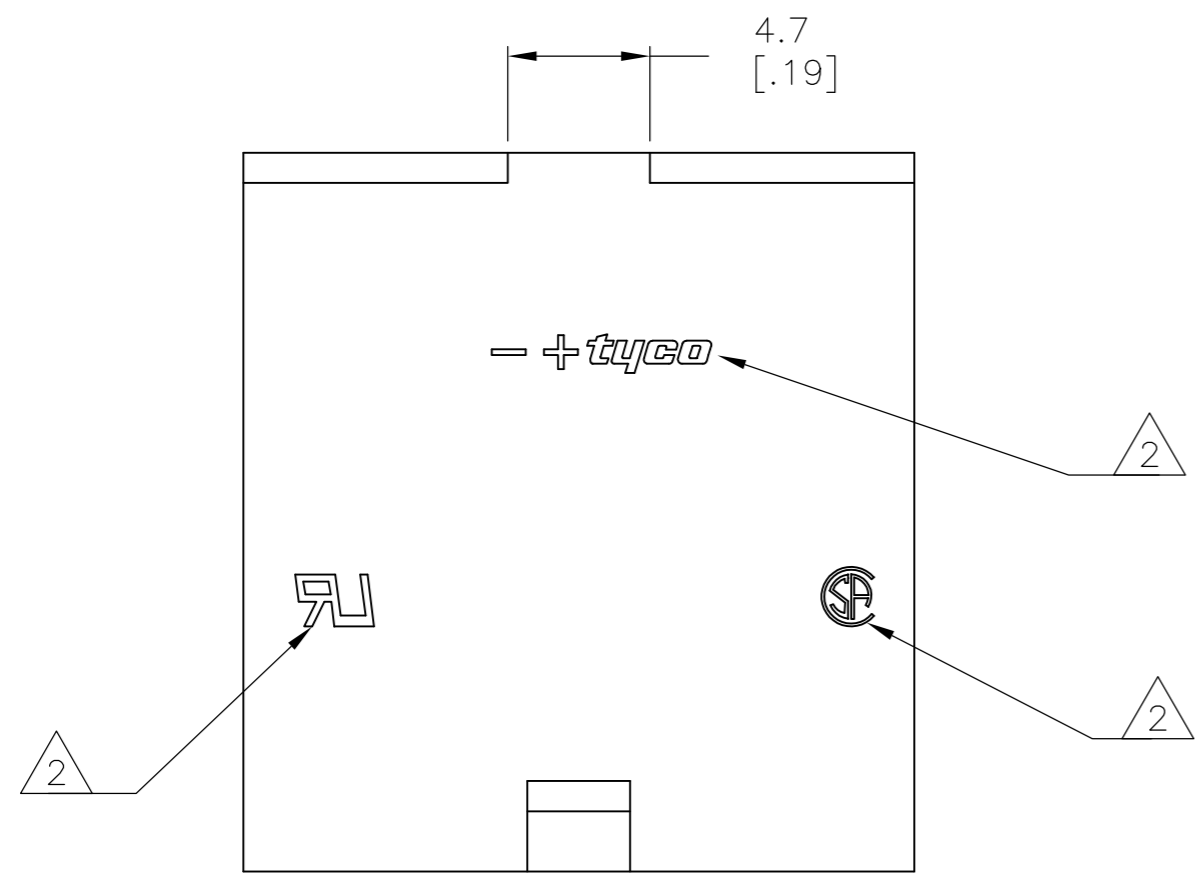
A

D

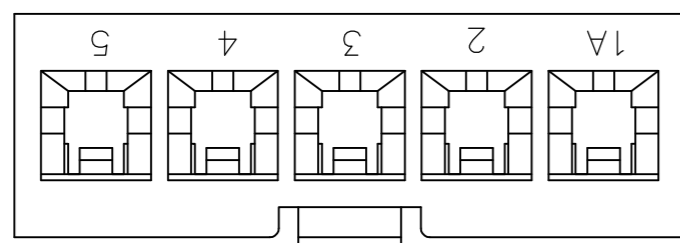
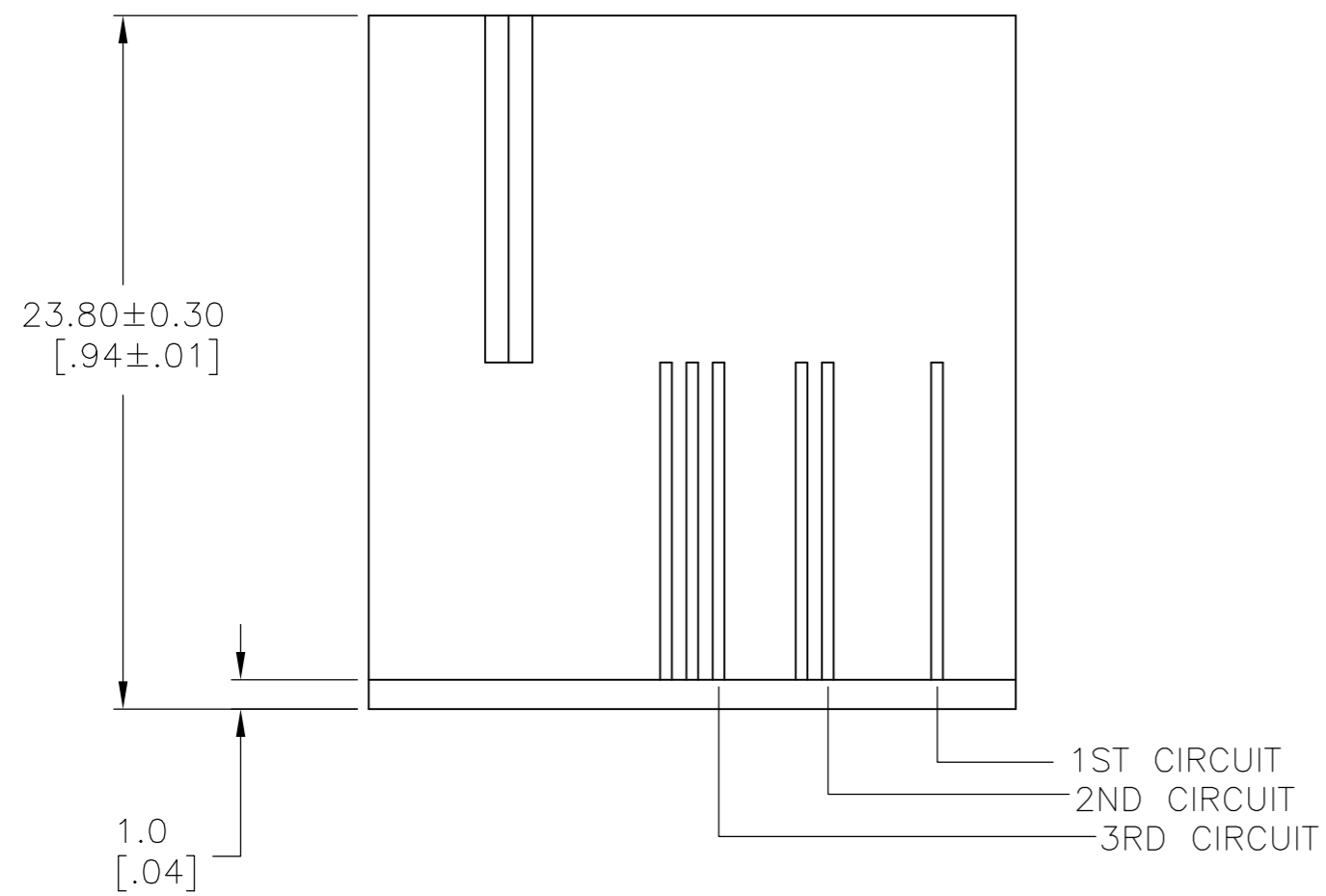
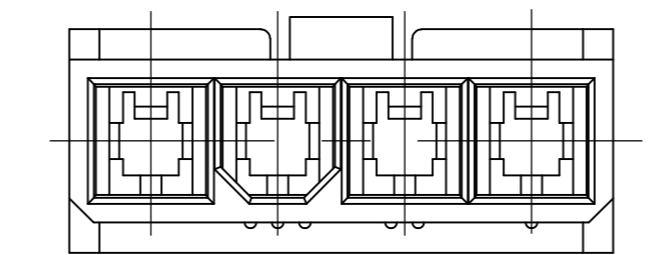
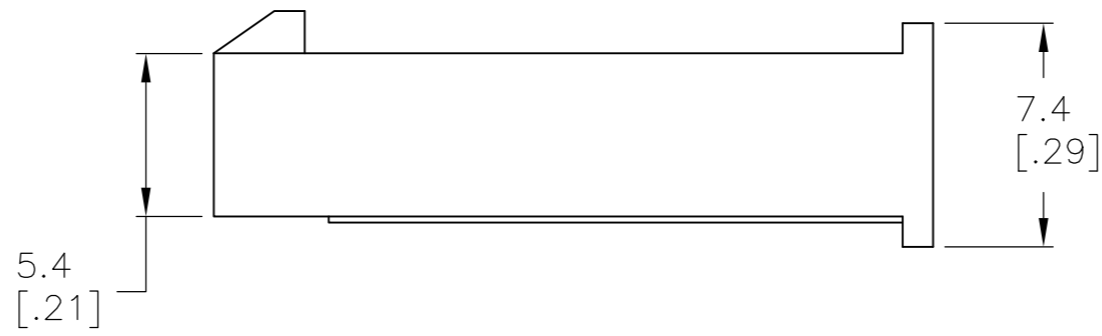
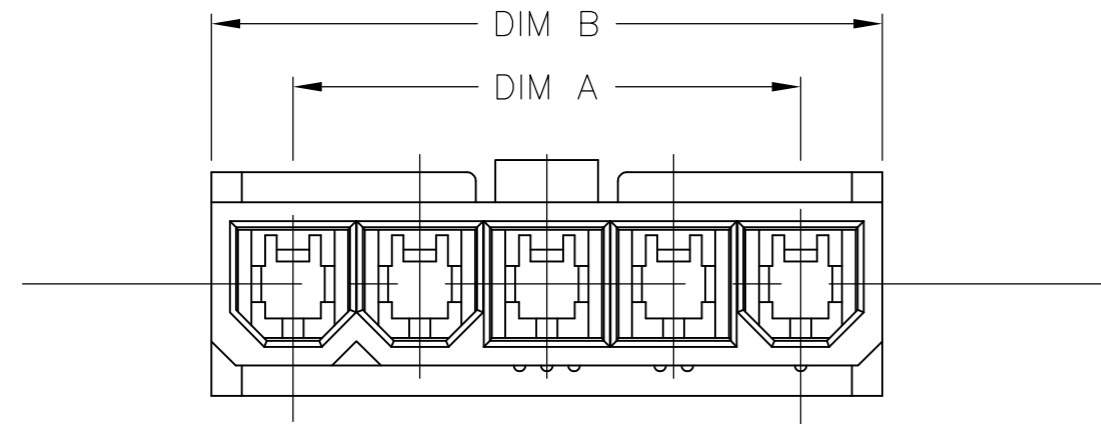
C

B

A



- 1 MATERIAL: NYLON 66 UL94V-0
- 2 TE LOGO, UL LOGO, AND CSA LOGO - SIZE, LOCATION, AND ORIENTATION OPTIONAL.



16.8 [.66]	22.2 [.87]	5	1586025-5
12.6 [.50]	18.0 [.71]	4	1586025-4
DIM A	DIM B	POS	PART NUMBER

THIS DRAWING IS A CONTROLLED DOCUMENT.		DWN	25MAY04	Tyco Electronics Corporation		Tyco Electronics Corporation	
DIMENSIONS: mm [INCHES]		S. HOOVER	25MAY04	Harrisburg, PA 17105-3608		NAME	
TOLERANCES UNLESS OTHERWISE SPECIFIED:		CHK	25MAY04	D. COLEY		HOUSING FREE HANGING PLUG, SINGLE ROW, VAL-U-LOK(TM)	
0 PLC ± -		APVD	25MAY04	D. COLEY		SIZE	
1 PLC ± 0.1[.04]		PRODUCT SPEC		-		CAGE CODE	
2 PLC ± -		APPLICATION SPEC		-		DRAWING NO	
3 PLC ± -				-		RESTRICTED TO	
4 PLC ± -				-		A2 00779 C=1586025	
ANGLES ± -		WEIGHT		-		SCALE	
FINISH				-		4:1 SHEET	
MATERIAL				-		1 of 1	
1				-		REV	
				-		C	



## X-ON Electronics

Largest Supplier of Electrical and Electronic Components

*Click to view similar products for [Headers & Wire Housings](#) category:*

*Click to view products by [TE Connectivity](#) manufacturer:*

Other Similar products are found below :

[892-18-020-10-001101](#) [58102-G61-06LF](#) [582553-1](#) [0009485154](#) [009176003701906](#) [0050291907](#) [LY20-4P-DT1-P1E-BR](#) [02.125.8002.8](#)  
[609-3404](#) [61062-3](#) [61082-181009](#) [622-3653LF](#) [63453-116](#) [636-1030](#) [636-1427](#) [636-3427](#) [636-4007](#) [641938-9](#) [641991-4](#) [644827-2](#) [65817-](#)  
[010LF](#) [65817-015LF](#) [65863-015LF](#) [66207-023LF](#) [67095-007LF](#) [67601157](#) [68645-018](#) [68648-049](#) [70.362.1628.0](#) [70-4210](#) [70-4226B](#) [70-](#)  
[4853B](#) [707-5020](#) [707-5028](#) [71.350.2428.0](#) [71918-208LF](#) [71961-016LF](#) [733-134](#) [733-162](#) [754199-000](#) [760-3052](#) [787-8014-00](#) [79531-3000](#)  
[FCN-360C032-B](#) [FCN-367T-T012/H](#) [FCN-723D010/2](#) [80.063.4001.1](#) [800-90-001-10-001000](#) [800-90-010-10-002000](#) [801-43-002-10-013000](#)