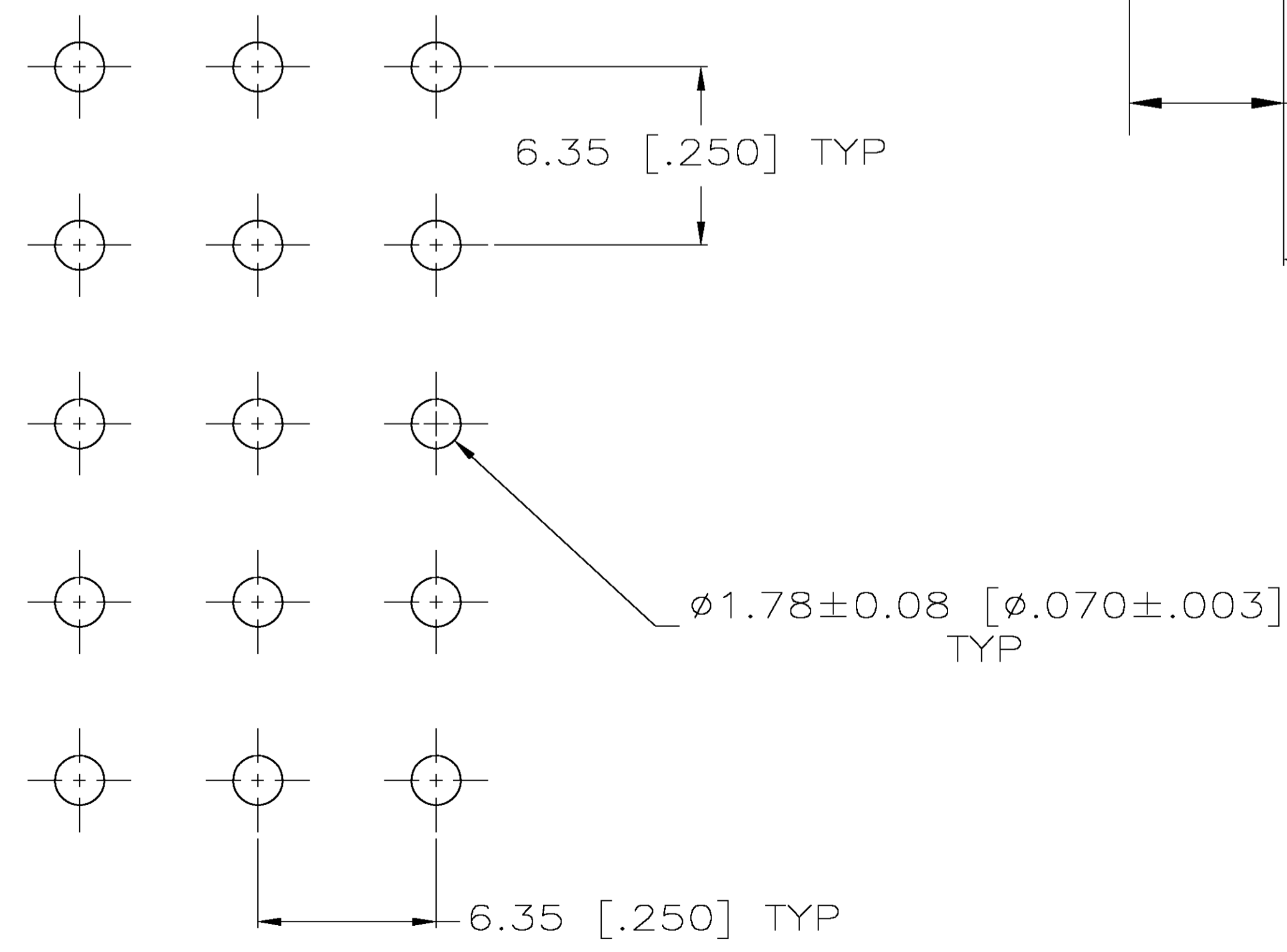
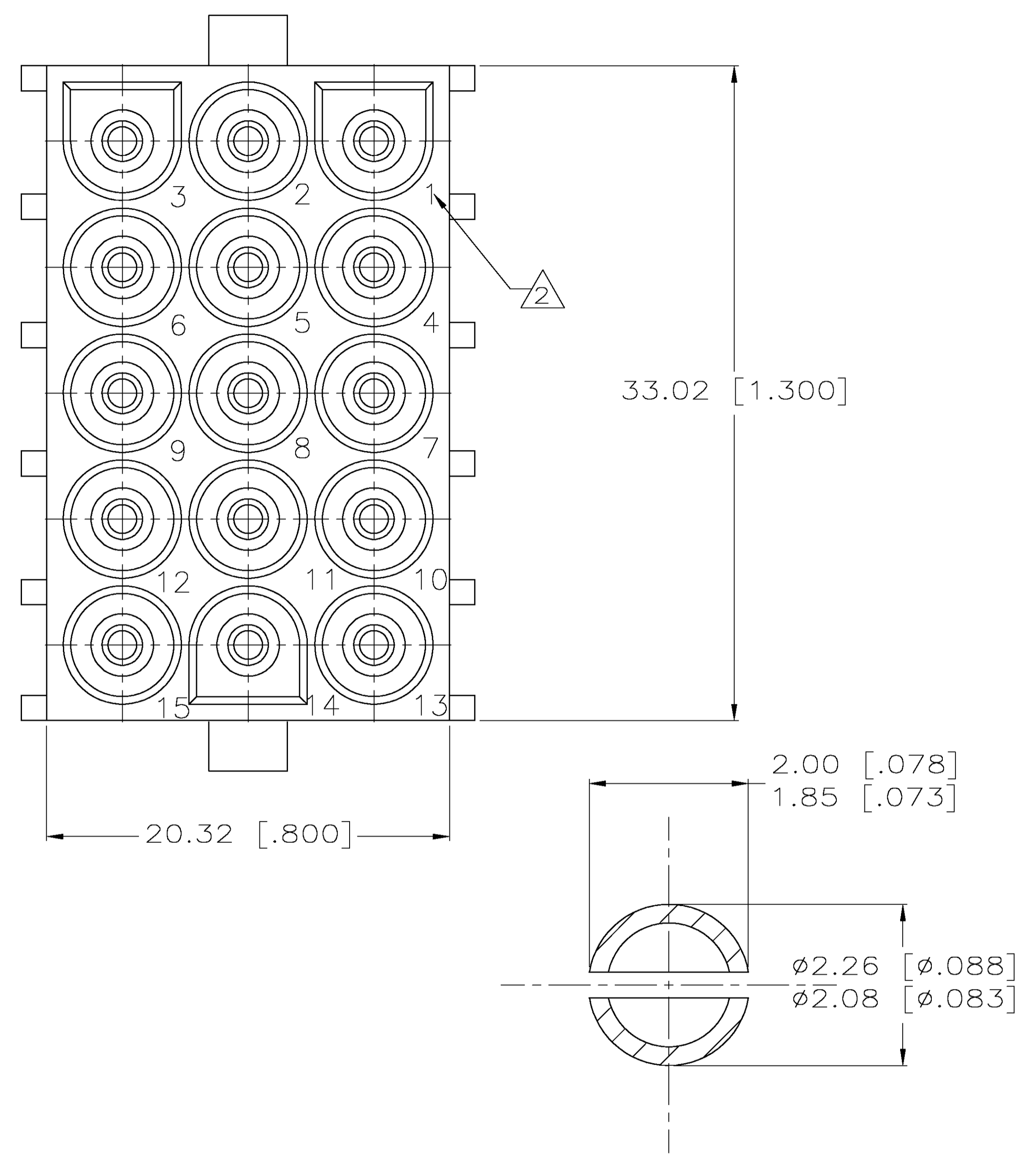
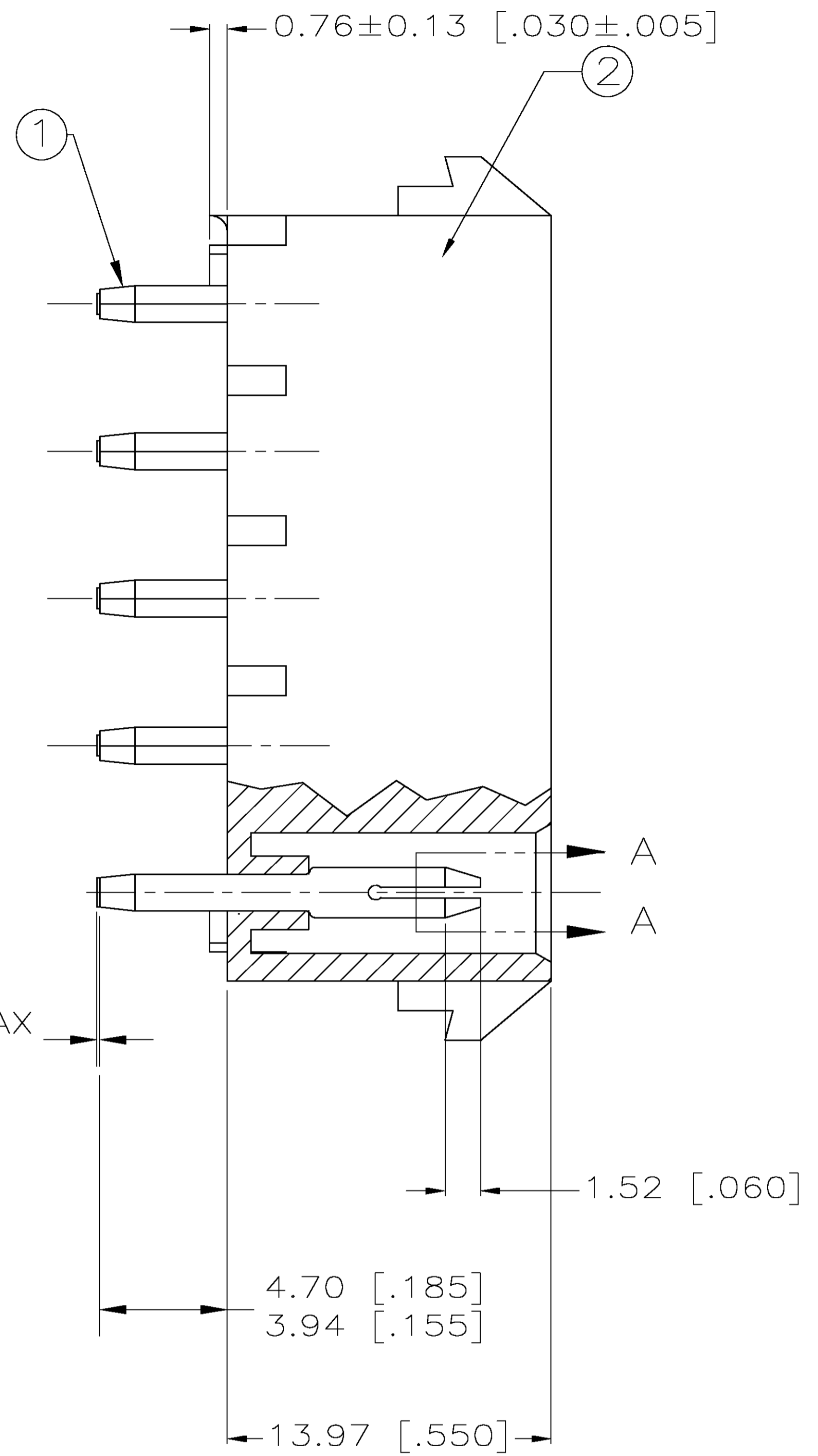
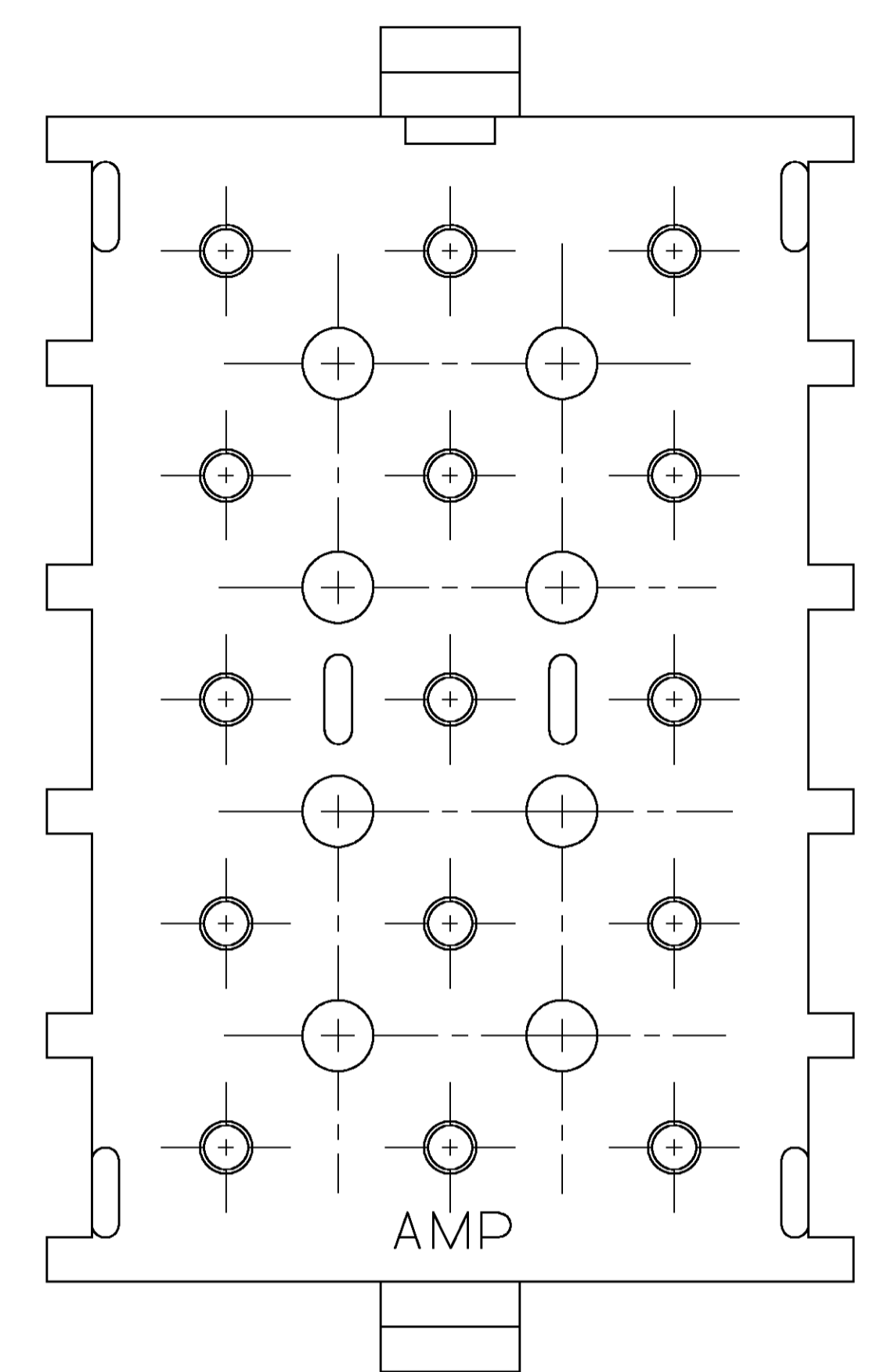


LOC		DIST		REVISIONS			
P	LTR	DATE	DNW	APVD	SH	SR	
0		19-NOV-03					
		REVISED PER		OG3B-0676-03			



- 1. PARTS MUST COMPLY WITH AMP SOLDERABILITY SPEC 109-11-3.
- 2. CIRCUIT IDENTIFICATION CHARACTERS ARE ADJACENT TO THE INDICATED CAVITIES, BUT LOCATION AND ORIENTATION MAY DIFFER FROM PRINT.

SECTION A-A  
SCALE 12:1



QTY	DESCRIPTION	PART NO.
1	HOUSING-NYLON, 94V-0 WHITE ②	
15	PIN HEADER-PH BRZ, PRE-TIN ①	1586170-1

THIS DRAWING IS A CONTROLLED DOCUMENT.		DNW: S. HOOVER 19-NOV-2003	Tyco Electronics Corporation	
DIMENSIONS: MM [INCHES]		CHK: S. RIDGILL 19-NOV-2003	Harrisburg, PA 17105-3608	
TOLERANCES UNLESS OTHERWISE SPECIFIED:		APVD: S. RIDGILL 19-NOV-2003	NAME: ASSEMBLY, HEADER, NO DRAIN HOLES, 15 CIRCUIT, UNIVERSAL MATE-N-LOK™	
0 PLG	±	APPLICATION SPEC		
1 PLG	±	SIZE: A1		
2 PLG	±	CASE CODE: 00779		
3 PLG	± 0.13 [.005]	DRAWING NO: 1586170		
4 PLG	±	RESTRICTED TO		
ANGLES	±	CUSTOMER DRAWING		
MATERIAL: SEE CHART	FINISH	SCALE: 6:1 SHEET 1 OF 1 REV 0		

RECOMMENDED LAYOUT FOR 1.58 [.062] THICK PC BOARD

## X-ON Electronics

Largest Supplier of Electrical and Electronic Components

*Click to view similar products for [Headers & Wire Housings](#) category:*

*Click to view products by [TE Connectivity](#) manufacturer:*

Other Similar products are found below :

[892-18-020-10-001101](#) [58102-G61-06LF](#) [582553-1](#) [0009485154](#) [009176003701906](#) [0050291907](#) [LY20-4P-DT1-P1E-BR](#) [02.125.8002.8](#)  
[609-3404](#) [61062-3](#) [61082-181009](#) [622-3653LF](#) [63453-116](#) [636-1030](#) [636-1427](#) [636-3427](#) [636-4007](#) [641938-9](#) [641991-4](#) [644827-2](#) [65817-](#)  
[010LF](#) [65817-015LF](#) [65863-015LF](#) [66207-023LF](#) [67095-007LF](#) [67601157](#) [68645-018](#) [68648-049](#) [70.362.1628.0](#) [70-4210](#) [70-4226B](#) [70-](#)  
[4853B](#) [707-5020](#) [707-5028](#) [71.350.2428.0](#) [71918-208LF](#) [71961-016LF](#) [733-134](#) [733-162](#) [754199-000](#) [760-3052](#) [787-8014-00](#) [79531-3000](#)  
[FCN-360C032-B](#) [FCN-367T-T012/H](#) [FCN-723D010/2](#) [80.063.4001.1](#) [800-90-001-10-001000](#) [800-90-010-10-002000](#) [801-43-002-10-013000](#)