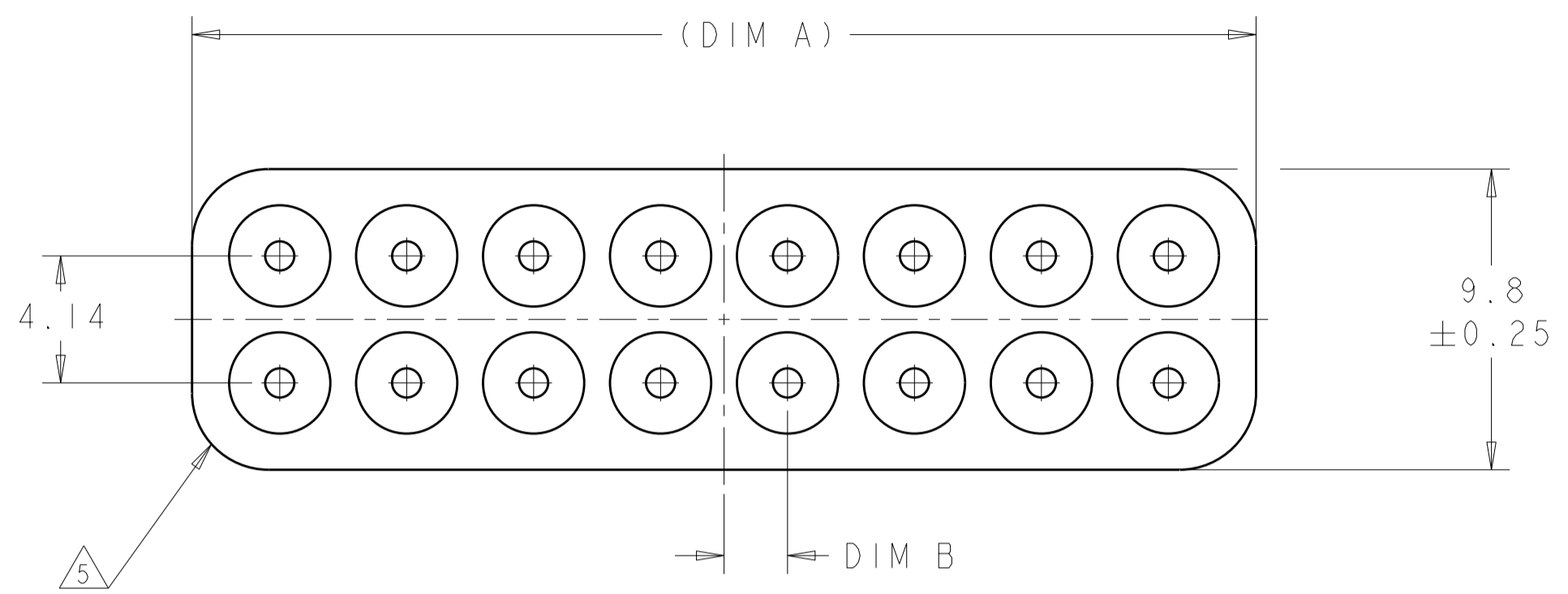
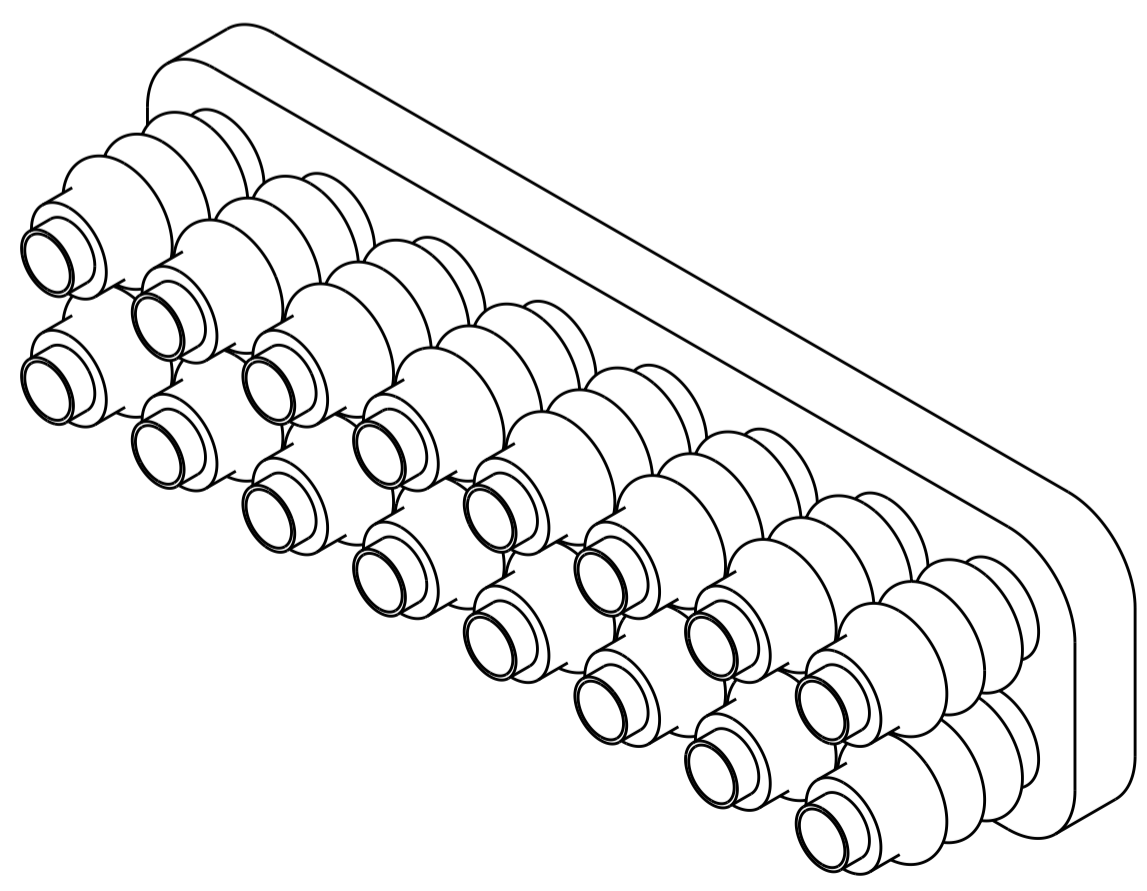
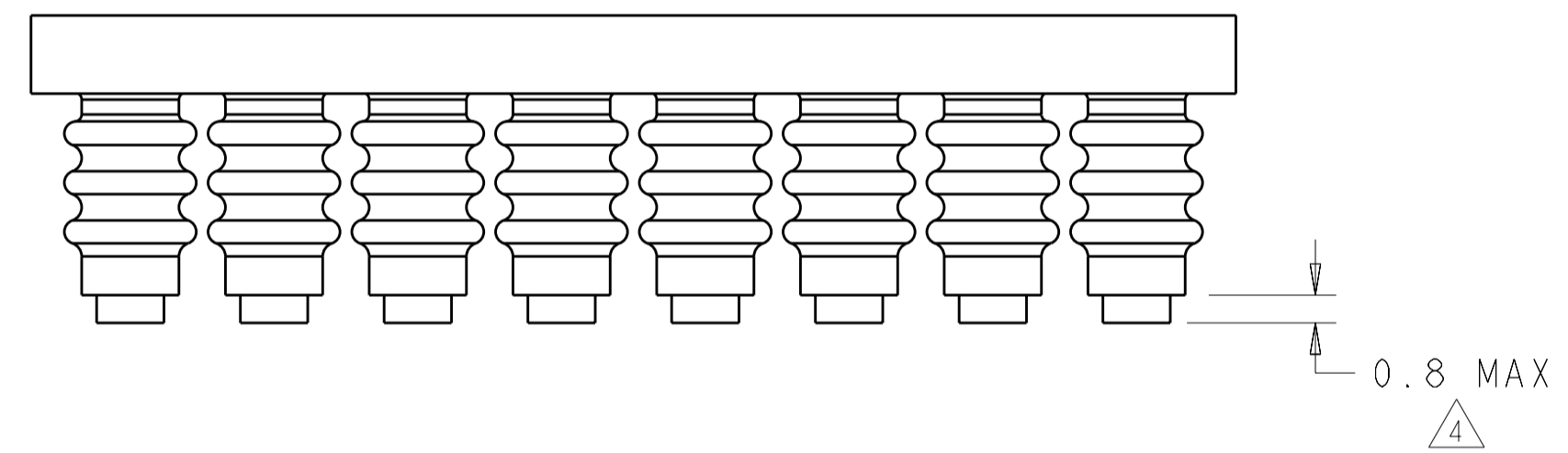


THIS DRAWING IS UNPUBLISHED. RELEASED FOR PUBLICATION 20
 © COPYRIGHT 20 ALL RIGHTS RESERVED.

LOC	DIST	REVISIONS					
CM	00	P	LTR	DESCRIPTION	DATE	DWN	APVD
		B2		REVISED PER ECR 12-001154	19JAN12	JR	TM



- 1 MATERIAL: SELF LUBRICATING SILICON RUBBER. COLOR: BLUE.
- 2. SEALS HAVE PASSED WATER INTRUSION TESTING TO LEVEL IPX4 PER IEC 60529, PARAGRAPH 14.2.4.
- 3. ACCEPTS WIRES WITH INSULATION DIAMETER OF 1.27 - 2.11.
- 4 RING GATE AREA, FLASH ALLOWABLE.
- 5 TWO OF THE FOUR CORNERS MAY BE SQUARE INSTEAD OF ROUNDED.



1279.86	2.07	34.7	16	1-1586359-6
808.45	0	22.28	10	1-1586359-0
651.31	2.07	18.14	8	1586359-8
494.18	0	14	6	1586359-6
337.04	2.07	9.86	4	1586359-4
179.9	0	5.72	2	1586359-2
VOLUME mm ³	DIM B	DIM A	CKT	PART NO.

METRIC

THIS DRAWING IS A CONTROLLED DOCUMENT.

DWN: K. WHITAKER 06-OCT-2003
 CHK: C. JONES 06-OCT-2003
 APVD: C. JONES 06-OCT-2003

TE Connectivity

GANG WIRE SEAL, MINI UNIVERSAL MATE-N-LOK(TM)

SIZE: A2 CAGE CODE: 00779 DRAWING NO: 1586359 RESTRICTED TO: -

CUSTOMER DRAWING SCALE: 5:1 SHEET 1 OF 1 REV: B2

X-ON Electronics

Largest Supplier of Electrical and Electronic Components

Click to view similar products for [Pin & Socket Connectors](#) category:

Click to view products by [TE Connectivity](#) manufacturer:

Other Similar products are found below :

[6450822-1](#) [770392-1](#) [794042-1](#) [796885-1](#) [8-794535-1](#) [PLR3455ACS-222](#) [R929991004](#) [R929993003](#) [1403611-1](#) [1-480349-5](#) [152302-5](#)
[153211-2](#) [1586092-1](#) [1586129-1](#) [1586681-4](#) [1586700-1](#) [1586368-1](#) [1586380-1](#) [1586616-1](#) [1586680-5](#) [16-06-0038](#) [164164-5](#) [1-6609930-1](#)
[172296-1](#) [19-09-2035](#) [200503-1](#) [200788-2](#) [2029090-4](#) [2029095-4](#) [925061-7](#) [293734-4](#) [293737-2](#) [1-765362-4](#) [1871534-1](#) [200833-4](#)
[2008625-2](#) [2029027-2](#) [2029096-4](#) [R929991000](#) [R929991002](#) [R929993000](#) [319-10-101-00-005000](#) [319-10-102-00-001000](#) [319-10-104-00-001000](#) [319-10-105-00-001000](#) [319-10-108-00-001000](#) [319-10-112-00-006000](#) [39-01-8019](#) [319-10-101-00-001000](#) [319-10-102-00-005000](#)