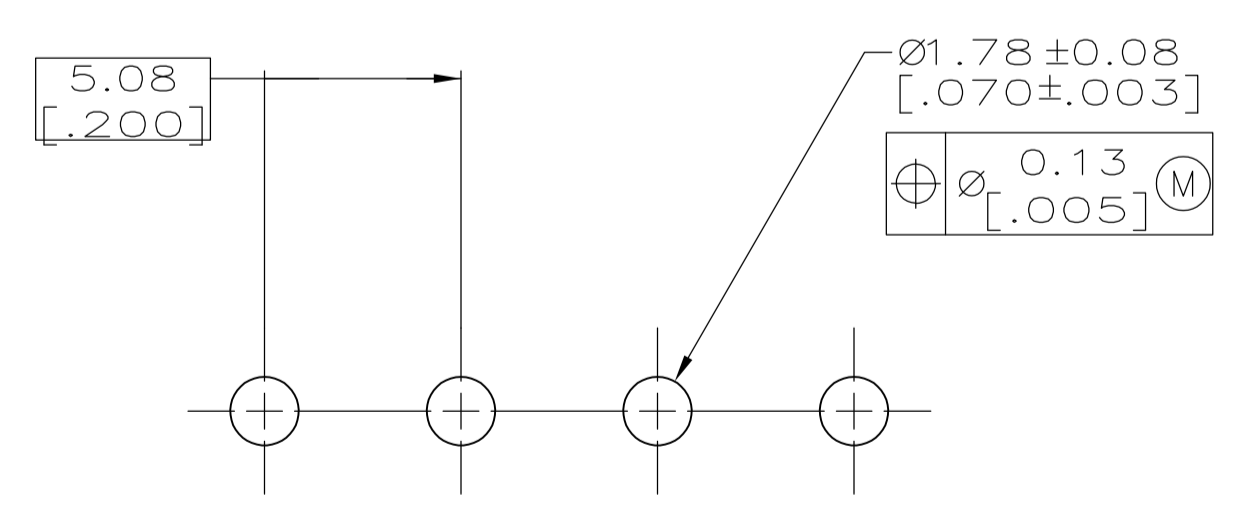
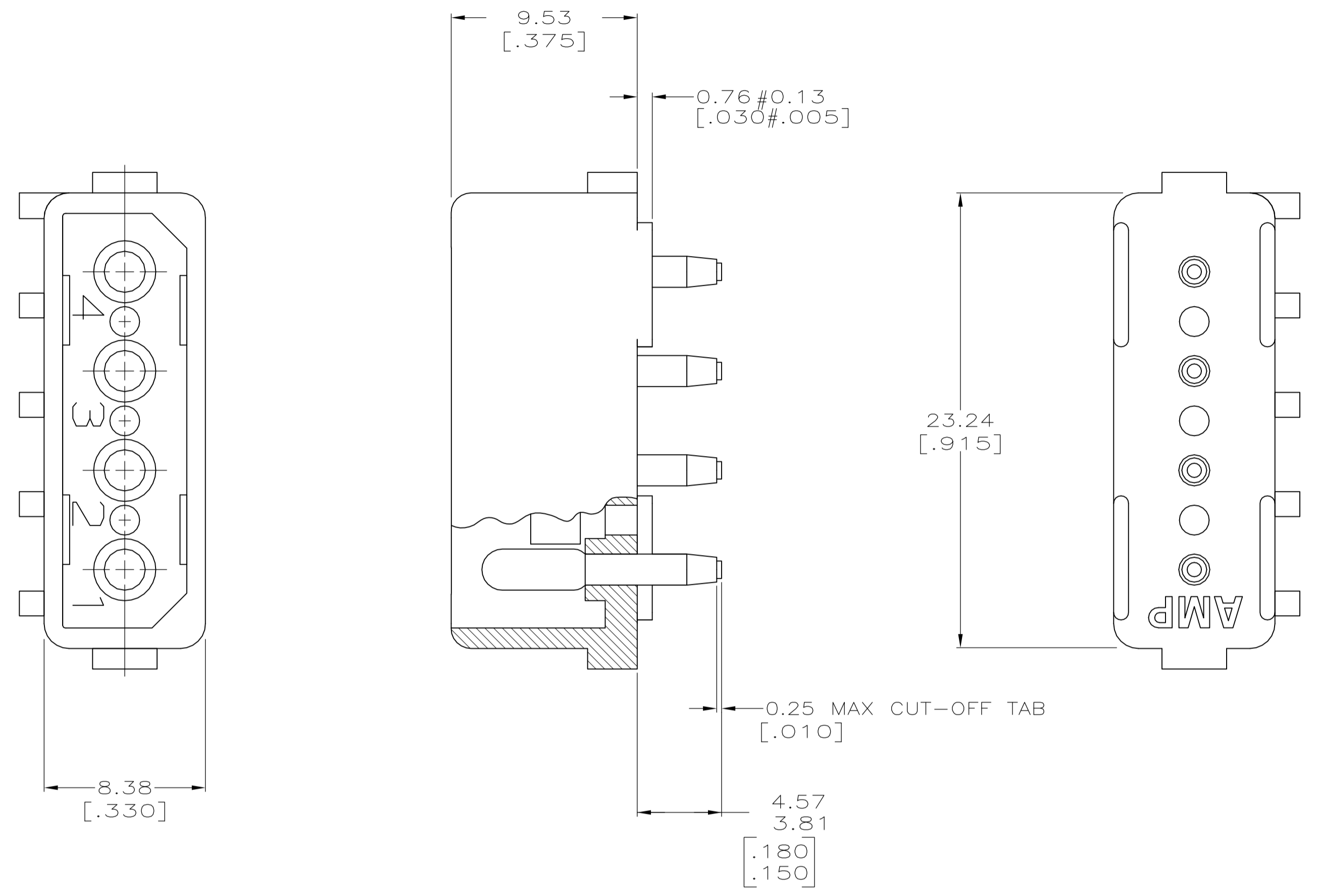
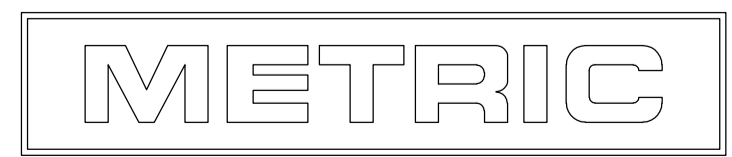


1 PARTS COMPLY WITH AMP SOLDERABILITY SPEC. 109-11-3.  
 3 MATERIAL: HOUSING - NYLON,UL94V-2,NATURAL  
 PIN - COPPER ALLOY,BRIGHT TIN  
 PLATED,0.0020 [.000080] MIN.THK.



RECOMMENDED MOUNTING HOLE PATTERN  
 FOR 1.57 [.062] THICK P.C. BOARD



—	—	4	1586627-1
HEADER ASSY	PLUG	NO. OF POSITIONS	PART NUMBER
QTY PER TUBE		HEADER ASSEMBLY	

THIS DRAWING IS A CONTROLLED DOCUMENT.		DWG K. WHITAKER 24JUNE2005	Tyco Electronics Corporation Harrisburg, PA 17105-3608	
DIMENSIONS: mm [INCHES]		CHK D. COLEY 24JUNE2005	NAME HEADER ASSY, 4 CKT, COMMERCIAL MATE-N-LOK(TM)	
TOLERANCES UNLESS OTHERWISE SPECIFIED:		APP'D D. COLEY 24JUNE2005	RESTRICTED TO	
0. PLC ± -	1. PLC ± -	SIZE CAGE CODE DRAWING NO		
2. PLC ± -	3. PLC ± 0.38 [.015]	A1 00779 C=1586627		
4. PLC ± -	ANGLES ± -	WEIGHT		
MATERIAL 3		CUSTOMER DRAWING		
FINISH 3		SCALE 5:1 SHEET 1 OF 1 REV A		

## X-ON Electronics

Largest Supplier of Electrical and Electronic Components

*Click to view similar products for [Pin & Socket Connectors](#) category:*

*Click to view products by [TE Connectivity](#) manufacturer:*

Other Similar products are found below :

[6450822-1](#) [770392-1](#) [794042-1](#) [796885-1](#) [8-794535-1](#) [PLR3455ACS-222](#) [R929991004](#) [R929993003](#) [1403611-1](#) [1-480349-5](#) [152302-5](#)  
[153211-2](#) [1586092-1](#) [1586129-1](#) [1586681-4](#) [1586700-1](#) [1586368-1](#) [1586380-1](#) [1586616-1](#) [1586680-5](#) [16-06-0038](#) [164164-5](#) [1-6609930-1](#)  
[172296-1](#) [19-09-2035](#) [200503-1](#) [200788-2](#) [2029090-4](#) [2029095-4](#) [925061-7](#) [293734-4](#) [293737-2](#) [1-765362-4](#) [1871534-1](#) [200833-4](#)  
[2008625-2](#) [2029027-2](#) [2029096-4](#) [R929991000](#) [R929991002](#) [R929993000](#) [319-10-101-00-005000](#) [319-10-102-00-001000](#) [319-10-104-00-001000](#) [319-10-105-00-001000](#) [319-10-108-00-001000](#) [319-10-112-00-006000](#) [39-01-8019](#) [319-10-101-00-001000](#) [319-10-102-00-005000](#)