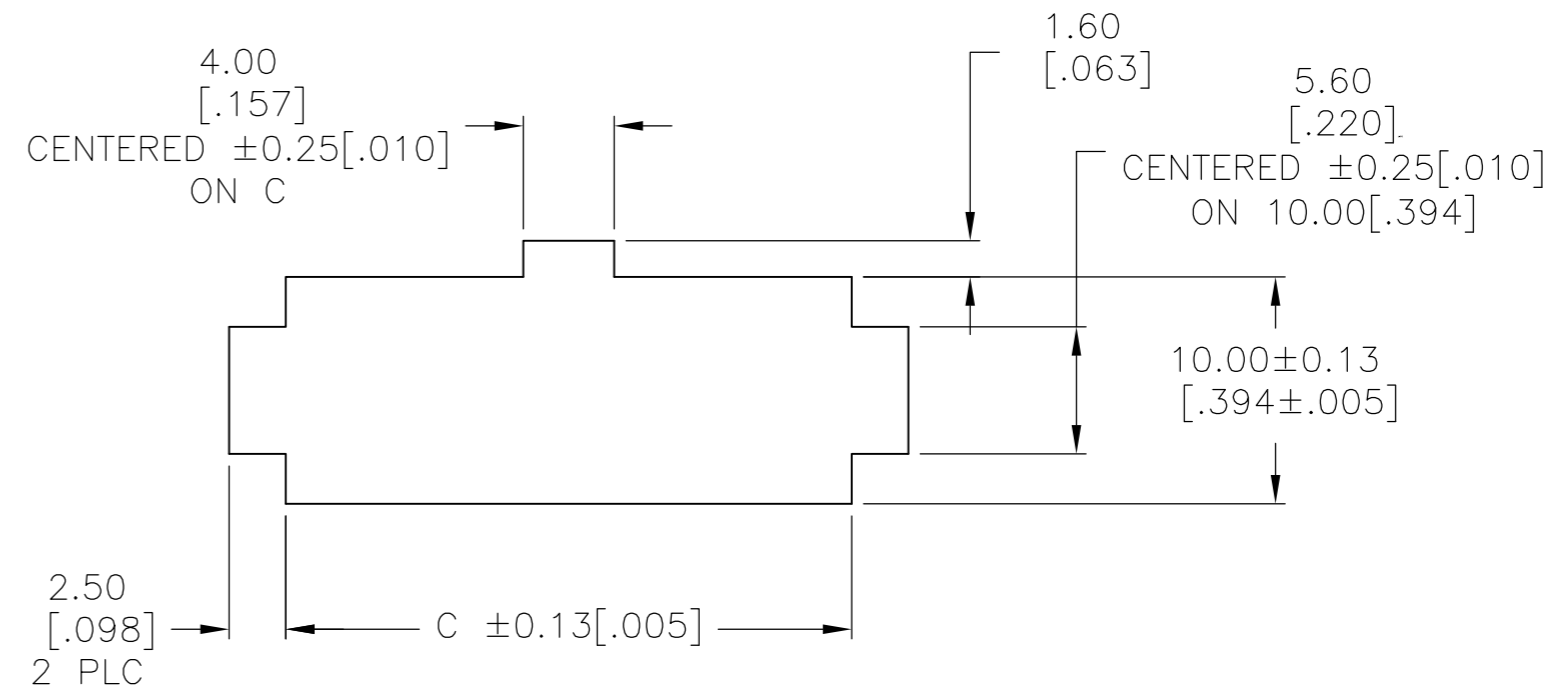
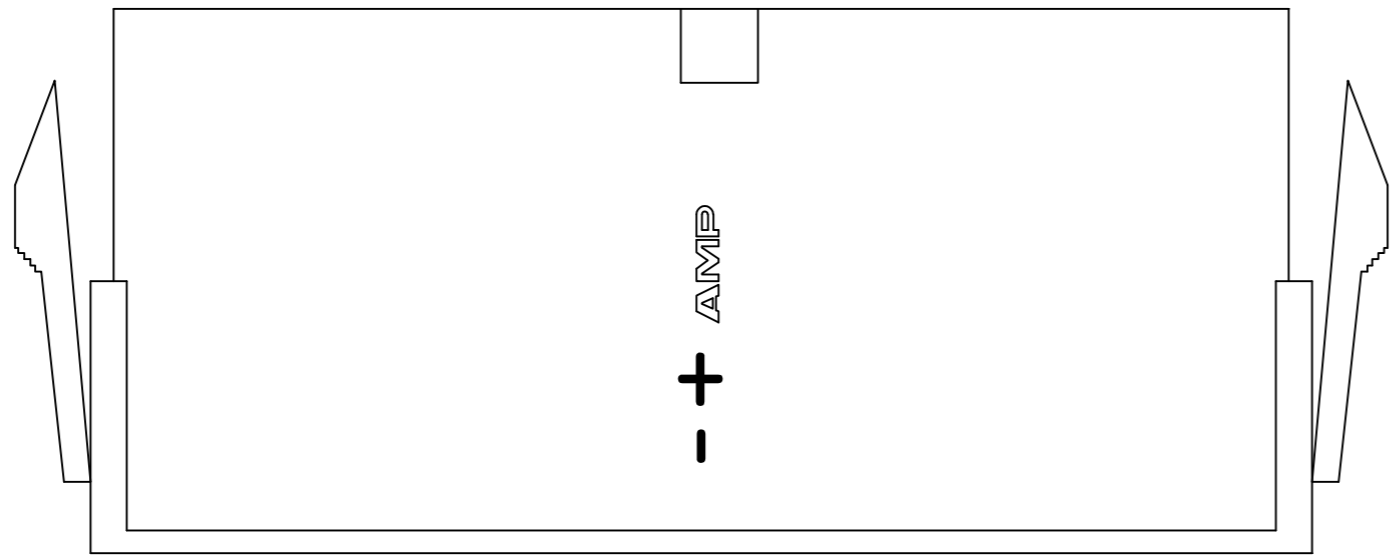


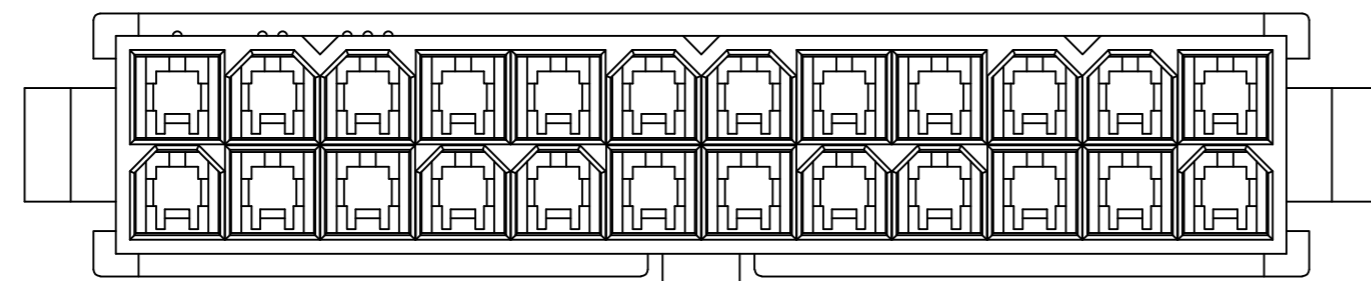
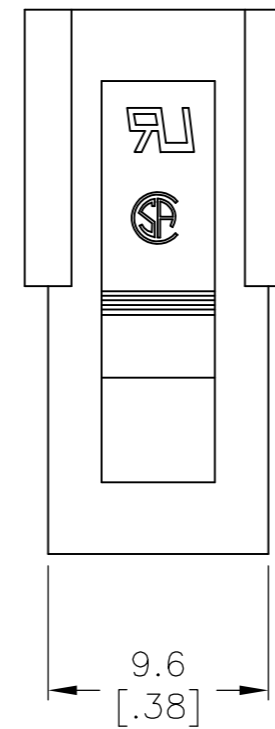
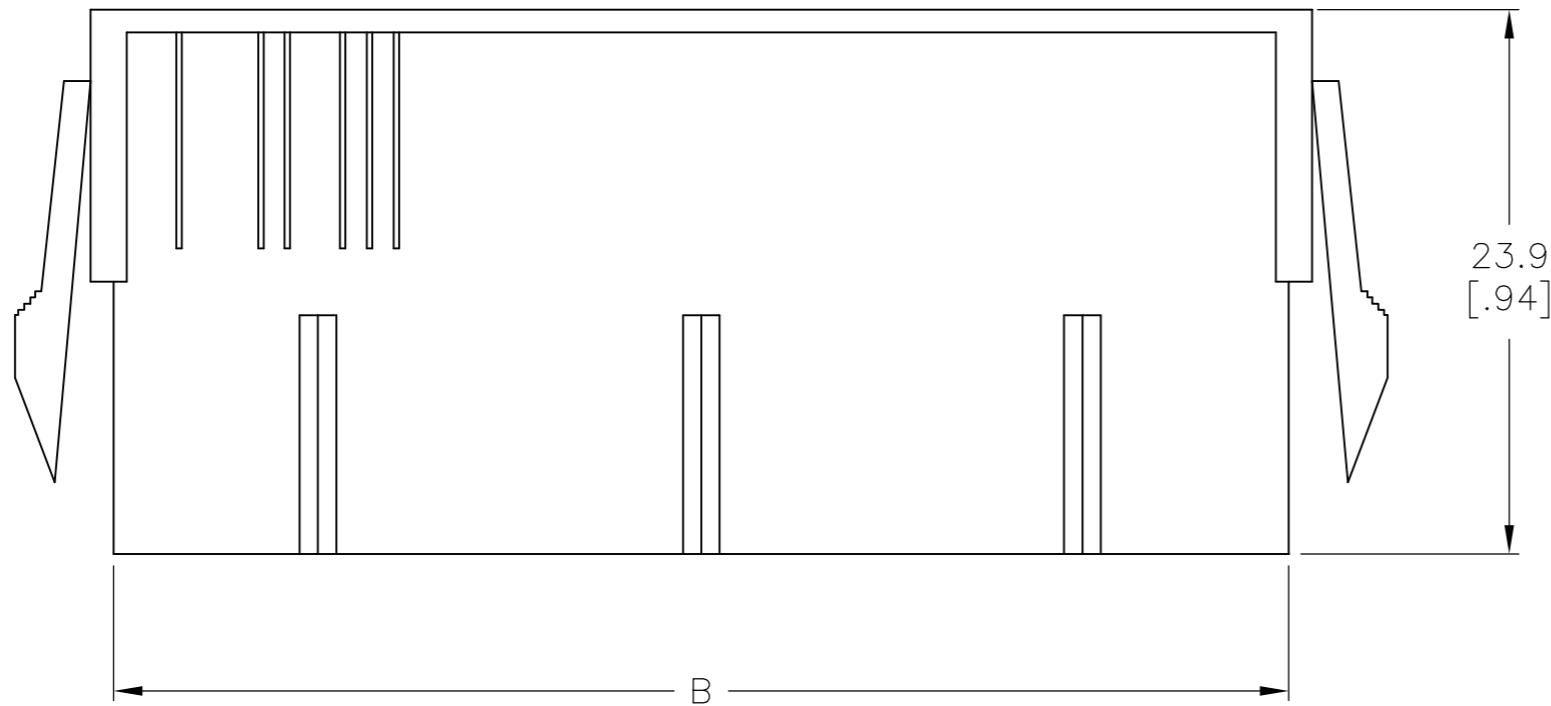
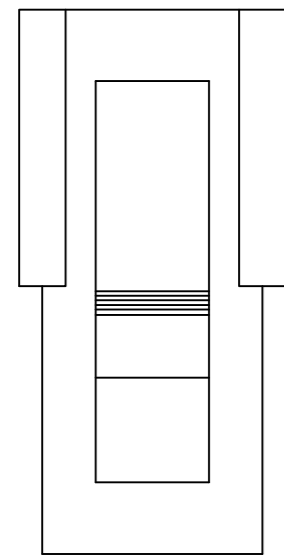
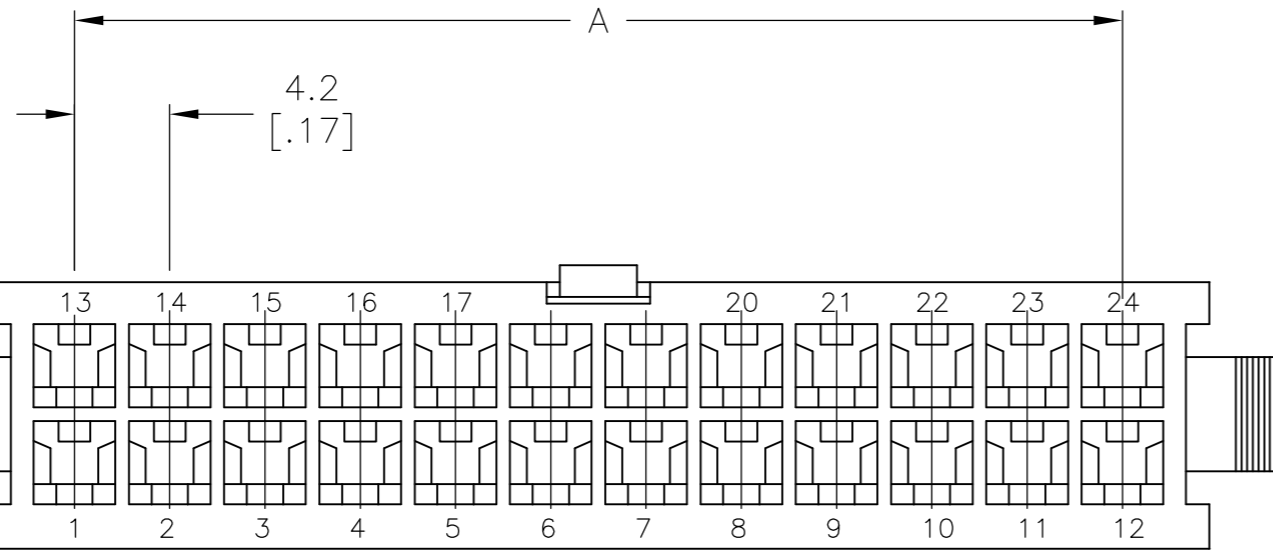
THIS DRAWING IS UNPUBLISHED. RELEASED FOR PUBLICATION  
 © COPYRIGHT BY TYCO ELECTRONICS CORPORATION. ALL RIGHTS RESERVED.

LOC	DIST	REVISIONS					
CM	00	P	LTR	DESCRIPTION	DATE	DWN	APVD
		E		REVISED PER ECR-10-018921	13SEPT10	JR	TM



RECOMMENDED CUT OUT FOR  
 2.00 [.079] MAX THICK PANEL

- 1 POLYAMIDE, UL94V-2, WHITE.
- 2 PANEL MUST BE PUNCHED SO THAT THE HOUSING ENTERS THE PANEL IN THE SAME DIRECTION AS THE PUNCH.
- 3 FLAMMABILITY V2 FOR THICKNESS 0.38mm, 1.5mm, and 3.0mm PER IEC 60695-11-10.
- 4 GLOW-WIRE FLAMMABILITY (GWFI) 800°C FOR THICKNESS 0.38mm AND 0.75mm PER IEC 60695-2-12.
- 5 GLOW-WIRE FLAMMABILITY (GWFI) 960°C FOR THICKNESS 1.5mm AND 3.0mm PER IEC 60695-2-12.
- 6 GLOW-WIRE IGNITION (GWIT) 825°C FOR THICKNESS 0.38mm, 0.75mm, 1.5mm AND 3.0mm PER IEC 60695-2-13.



DIM C	DIM B	DIM A	POS	PART NUMBER
52.00[2.047]	51.60[2.031]	46.2[1.82]	24	2-1586861-4
47.80[1.882]	47.40[1.866]	42.0[1.65]	22	2-1586861-2
43.60[1.717]	43.20[1.701]	37.8[1.49]	20	2-1586861-0
39.40[1.551]	39.00[1.535]	33.6[1.32]	18	1-1586861-8
35.20[1.386]	34.80[1.370]	29.4[1.16]	16	1-1586861-6
31.00[1.220]	30.60[1.205]	25.2[.99]	14	1-1586861-4
26.80[1.055]	26.40[1.039]	21.0[.83]	12	1-1586861-2
22.60[.889]	22.20[.874]	16.8[.66]	10	1-1586861-0
18.40[.724]	18.00[.709]	12.6[.50]	8	1586861-8
14.20[.559]	13.80[.543]	8.4[.33]	6	1586861-6
10.00[.394]	9.60[.378]	4.2[.17]	4	1586861-4
5.80[.223]	5.40[.213]	--	2	1586861-2

METRIC

THIS DRAWING IS A CONTROLLED DOCUMENT.

DIMENSIONS: mm [INCHES]	TOLERANCES UNLESS OTHERWISE SPECIFIED: 0 PLC ± - 1 PLC ± 0.4 [.02] 2 PLC ± 0.25 [.010] 3 PLC ± 0.150 [.0059] 4 PLC ± - ANGLES ± - FINISH -	DWN K. WHITAKER 29JUN2007 CHK C. CASH 29JUN2007 APVD C. CASH 29JUN2007 PRODUCT SPEC APPLICATION SPEC WEIGHT -	Tyco Electronics Corporation Harrisburg, PA 17105-3608 NAME PANEL MOUNT PLUG HOUSING, VAL-U-LOK(TM) SIZE A2 CAGE CODE 00779 DRAWING NO C=1586861 RESTRICTED TO -
MATERIAL 1		CUSTOMER DRAWING	SCALE - SHEET 1 OF 1 REV E

## X-ON Electronics

Largest Supplier of Electrical and Electronic Components

*Click to view similar products for [Headers & Wire Housings](#) category:*

*Click to view products by [TE Connectivity](#) manufacturer:*

Other Similar products are found below :

[95000-104TRLF](#) [10135584-644402LF](#) [DF62W-EP2022PCA](#) [95000-106TRLF](#) [DF62W-2022SCA](#) [DF62W-EP2022PC](#) [2203348](#) [DF62W-2022SC](#) [1084018](#) [1029039](#) [1084017](#) [802-10-012-10-002000](#) [1112640](#) [1112639](#) [000-34000](#) [0009482033](#) [0009507031](#) [57102-S06-03LF](#) [57202-S52-04LF](#) [PCN6-15S-2.5E](#) [0039019024](#) [58102-G61-06LF](#) [582553-1](#) [0009508121](#) [0050291907](#) [018731A](#) [LY20-4P-DT1-P1E-BR](#) [02.125.8002.8](#) [60101931](#) [60598-1 \(Cut Strip\)](#) [M1625-3R/100](#) [61062-3](#) [61082-181009](#) [636-1427](#) [638009-1](#) [641938-9](#) [641991-4](#) [644168-1](#) [647662-1](#) [65039-019ELF](#) [65817-002LF](#) [65817-015LF](#) [65863-015LF](#) [66207-023LF](#) [67016-026LF](#) [67046-001LF](#) [67095-007LF](#) [68002-116](#) [68016-236H](#) [68648-049](#)