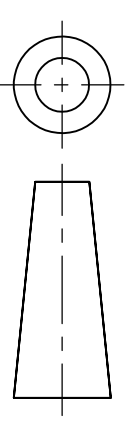


DO NOT SCALE

METRIC

THIRD ANGLE PROJECTION

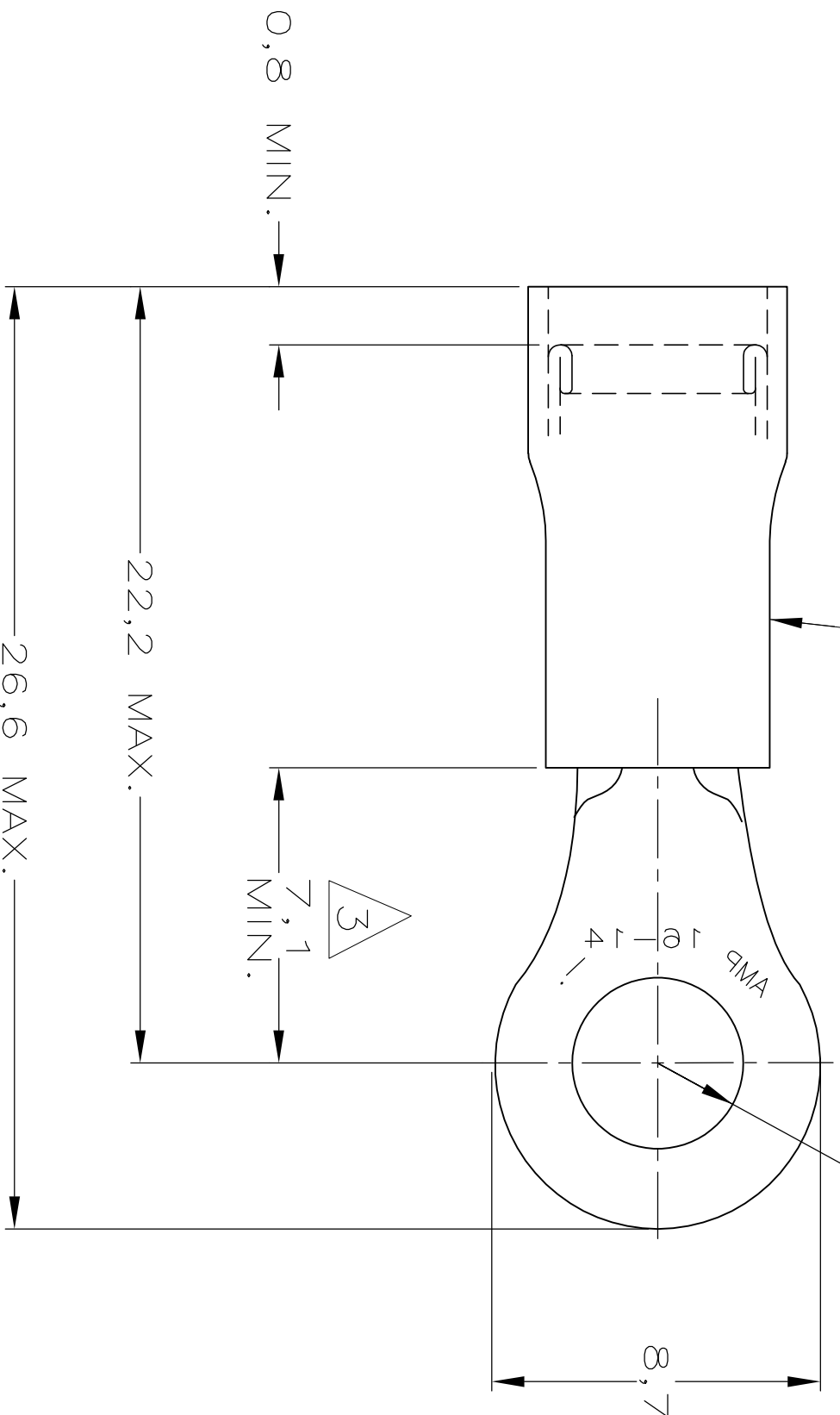


WIRE RANGE :
1,0-2,6 mm²

DIMENSIONS IN mm

YELLOW NYLON INSULATION

5,3 DIA. FOR STUD M5



- 1 TONGUE MATERIAL THICKNESS 1,2mm
- 2 WIRE INS. DIA IS 3.8-5.8
- 3 FROM EDGE OF METAL WIRE BBL TO CENTER OF STUD HOLE

OBSOLETE

160011 MOUNTED ON TAPE

—2 160011—1—

TOL. ±0.2

TIN

COPPER

160011

FINISH

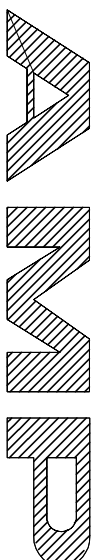
MATERIAL

PARTNUMBER

CUSTOMER DRAWING

FOR REFERENCE ONLY
WILL NOT BE UPDATED

© COPYRIGHT 19 - BY AMP HOLLAND B.V.
 ALL INTERNATIONAL RIGHTS RESERVED. AMP PRODUCTS MAY BE COVERED BY U.S. AND FOREIGN AND/OR PATENTS PENDING.
 THIS DRAWING IS UNPUBLISHED
 RELEASED FOR PUBLICATION _____, 19____



AMP HOLLAND B.V.
's-Hertogenbosch,
The Netherlands.

NAME

PIDG
RINGTONGUE

DR.:	J.V.LIEMPT	CHK.:	A.BIJNEN	APP.:	M.V.DRIEL
DATE:	30 JAN 97	DATE:	-	DATE:	-

LTR.	REVISION RECORD	DR.	CHK.	DATE
-	-	-	-	-
-	-	-	-	-
-	-	-	-	-
-	-	-	-	-
-	-	-	-	-
C1	ECCO-09-024717	KK	AEG	06NOV09
C	OG3A-0002-04	JR	TM	02MAR04

DR.:	J.V.LIEMPT	CHK.:	A.BIJNEN	APP.:	M.V.DRIEL
DATE:	30 JAN 97	DATE:	-	DATE:	-

DWG.No.
160011

REV.LTR.
C1

SHEET
1 OF 1

A4

X-ON Electronics

Largest Supplier of Electrical and Electronic Components

Click to view similar products for [Terminals](#) category:

Click to view products by [TE Connectivity](#) manufacturer:

Other Similar products are found below :

[00-054007-01074-6](#) [00-054007-70206-1](#) [00-054007-70210-8](#) [00-054007-70217-7](#) [00-054007-70226-9](#) [00-054007-70228-3](#) [00-054007-70248-1](#) [00-054007-70256-6](#) [00-054007-70301-3](#) [00-054007-70316-7](#) [0-0320562-0](#) [00-054007-49560-4](#) [00-054007-70209-2](#) [00-054007-70225-2](#) [00-054007-70227-6](#) [00-054007-70231-3](#) [00-054007-70241-2](#) [00-054007-70242-9](#) [00-054007-70244-3](#) [00-054007-70246-7](#) [00-054007-70263-4](#) [00-054007-70288-7](#) [00-054007-70290-0](#) [00-054007-70300-6](#) [00-054007-70304-4](#) [01-2065-1-0216](#) [01-2900-1-04412](#) [00581P0075](#) [600TS-10](#) [60205-1](#) [604200-1](#) [605601-1](#) [60598-1-CUT-TAPE](#) [61314-6-C](#) [61810-3](#) [61-S](#) [61-SN](#) [626-0194](#) [62-NBM-A](#) [62-SN](#) [62-SP](#) [63-S](#) [640179-1](#) [M55155/059I03](#) [M55155/079C01](#) [M55155/099H02](#) [M55155/109H01](#) [M55155/109H02](#) [M55155/12XH05](#) [M55155/16XH02](#)