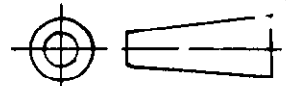


DO NOT SCALE

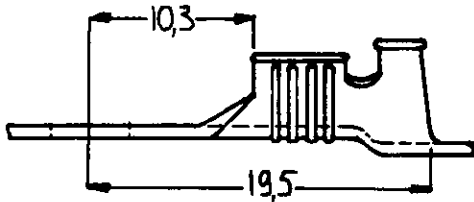
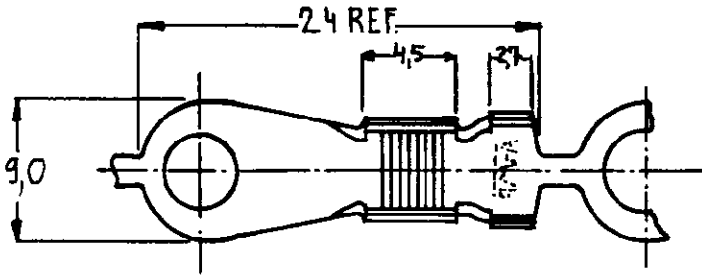
DIMENSIONS IN mm

METRIC

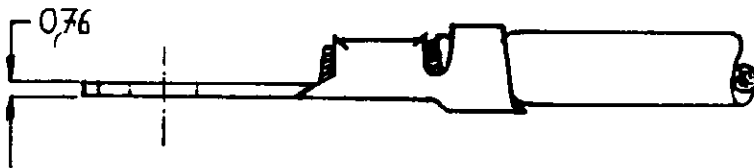
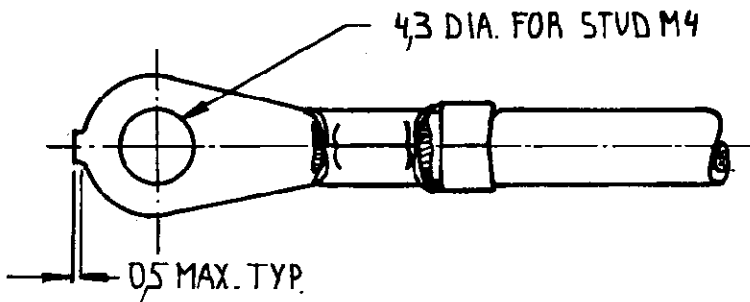
THIRD ANGLE
PROJECTION



LTR.	REVISION RECORD	DR.	CHK.	DATE
C1	ECO-09-026346	KK	AEG	26NOV09



5 OBSOLETE PARTS: OBSOLETE CIS STREAMLINING PER D.RENAUD/D.SINISI



DOC. CENTRE

03 NOV. 1994

NOTES: 1 FOR USE ON STANDARD AND MINIATURE APPLICATORS.

2 FOR USE ON MINIATURE APPLICATORS. (AMP-O-MATOR APPLICATION)

3 REELED WITH PAPER

4 REELED WITH PAPER AND PAPERCOVER

NOTES	FINISH	MATERIAL	PART NUMBER
5	UNPLATED	PHOSPHOR BRONZE	160163-5
OBSOLETE	UNPLATED	BRASS	160163-4
OBSOLETE	UNPLATED	PHOSPHOR BRONZE	160163-3
	TINPLATED	BRASS	160163-2
	UNPLATED	BRASS	160163-1

CUSTOMER DRAWING

FOR REFERENCE ONLY
WILL NOT BE UPDATED

AMP

AMP-HOLLAND B.V.
's-Hertogenbosch, The Netherlands

THIS DRAWING IS UNPUBLISHED -RELEASED FOR PUBLICATION- .19
© COPYRIGHT 19 BY AMP-HOLLAND B.V.
ALL INTERNATIONAL RIGHTS RESERVED.
AMP PRODUCTS MAY BE COVERED BY U.S. AND FOREIGN PATENTS AND/OR PATENTS PENDING.

DR. 21/4-83	WIRE RANGE 3,1 - 5,3 mm ²	NAME RINGTONGUE WITH INSULATION SUPPORT	REV. DATE D M Y
CHK. 28/4-83	INSUL. RANGE 3,8 - 5,3 DIA.		26 11 09
APP. 28.4.83	SIZE A4	SHEET [OF]	REV. LTR. C1

DRAWING NO
C-160163

X-ON Electronics

Largest Supplier of Electrical and Electronic Components

Click to view similar products for [Terminals](#) category:

Click to view products by [TE Connectivity](#) manufacturer:

Other Similar products are found below :

[00-054007-01074-6](#) [00-054007-70206-1](#) [00-054007-70210-8](#) [00-054007-70217-7](#) [00-054007-70226-9](#) [00-054007-70228-3](#) [00-054007-70248-1](#) [00-054007-70256-6](#) [00-054007-70301-3](#) [00-054007-70316-7](#) [0-0320562-0](#) [00-054007-49560-4](#) [00-054007-70209-2](#) [00-054007-70225-2](#) [00-054007-70227-6](#) [00-054007-70231-3](#) [00-054007-70241-2](#) [00-054007-70242-9](#) [00-054007-70244-3](#) [00-054007-70246-7](#) [00-054007-70263-4](#) [00-054007-70288-7](#) [00-054007-70290-0](#) [00-054007-70300-6](#) [00-054007-70304-4](#) [01-2065-1-0216](#) [01-2900-1-04412](#) [00581P0075](#) [600TS-10](#) [60205-1](#) [604200-1](#) [605601-1](#) [60598-1-CUT-TAPE](#) [61314-6-C](#) [61810-3](#) [61-S](#) [61-SN](#) [626-0194](#) [62-NBM-A](#) [62-SN](#) [62-SP](#) [63-S](#) [640179-1](#) [M55155/059I03](#) [M55155/079C01](#) [M55155/099H02](#) [M55155/109H01](#) [M55155/109H02](#) [M55155/12XH05](#) [M55155/16XH02](#)