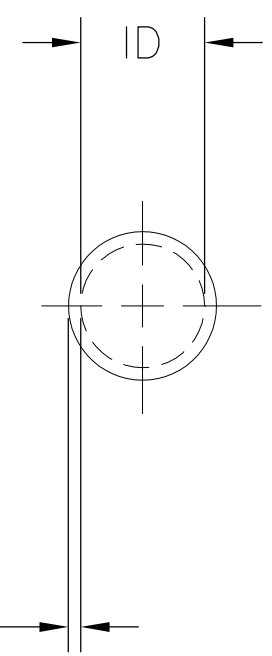
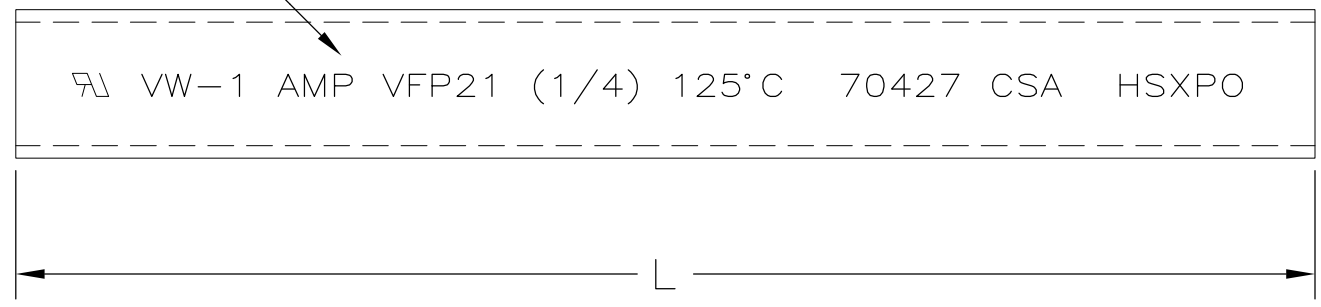


6.35 [.250] MINIMUM EXPANDED
 3.18 [.125] MAXIMUM RECOVERED



REVISIONS		
LTR	DESCRIPTION	DATE
Y	REVISED PER DCR NO R060226	10/13/2006
Y1	REVISED PER ECO-09-021510	12SEP09

0.64 [.025] NOMINAL WALL THICKNESS FULLY RECOVERED

- 1. TUBING VFP21 MARKED AS SHOWN IN WHITE CHARACTERS ON SURFACE INDICATED
- 2. TUBING VFP21 IS UL RECOGNIZED, IS RATED 125°C [257°F] AND MEETS VW-1 FLAME TEST.
- 3. TUBING VFP21 IS CSA CERTIFIED AND MEETS VW-1 FLAME TEST.
- 4. TUBING FP21 IS UNMARKED AND MEETS REQUIREMENTS OF AMS-DTL-23053/5-106-0

MARKING	NOTES	LENGTH L	PART NUMBER
4	4	60.96 m [200 ft] MINIMUM	2-603326-7
1	2 3	60.96 m [200 ft] MINIMUM	2-603326-6
4	4	31.75 ± 1.52 [1.25 ± .06]	2-603326-4
1	2 3	30.48 m [100 ft] MINIMUM	2-603326-2
4	4	30.48 m [100 ft] MINIMUM	2-603326-1
4	4	1.22 m [4 ft] MINIMUM	1-603326-1
1	2 3	25.4 ± 1.52 [1.00 ± .06]	603326-7
1	2 3	304.8 ± 3.05 [12.00 ± .12]	603326-4
1	2 3	1.22 m [4 ft] MINIMUM	603326-1

- 5. WEIGHT PER LINEAR FOOT/304.8 mm:
2.54 g/.006 lbs.
- 6. MATERIAL: BLACK POLYOLEFIN
- 7. OBSOLETE PARTS: OBSOLETE CIS STREAMLINING PER D.RENAUD/D.SINISI

© 2006-2009 Tyco Electronics Corporation. All rights reserved.

SPECIFICATION CONTROL DRAWING

UNLESS OTHERWISE SPECIFIED DIMENSIONS ARE IN mm. INCH DIMENSIONS ARE IN BRACKETS.	DRAWN UNGUYEN	DATE 10/13/2006	Tyco Electronics Corporation 300 Constitution Drive Menlo Park, CA, USA 94025
	RPN		
DECIMALS .XX ± .01 [0004 in] .X ± .1 [004 in]	CAD NAME R060226	TITLE AMPSULATION VFP21 AND FP21 1/4 INCH ID, BLACK	
ANGLES .X ± 0.5 DEG	THIRD ANGLE PROJECTION	SIZE B	CODE IDENT. NO. 06090
		DWG. NO. C-603326	
		DO NOT SCALE THIS DRAWING	
		SHEET 1 OF 1	

X-ON Electronics

Largest Supplier of Electrical and Electronic Components

Click to view similar products for [Heat Shrink Tubing and Sleeves](#) category:

Click to view products by [TE Connectivity](#) manufacturer:

Other Similar products are found below :

[5685710001](#) [CR9960-000](#) [5734012004](#) [607381P039](#) [611112-000](#) [6284592002](#) [CX4711-000](#) [CZ1420-000](#) [D-306-38](#) [770-006S302](#) [770-010Y106W1](#) [770-018S103](#) [770-018S202W1](#) [770-018S205W1](#) [770-020S704W1](#) [770-020S705](#) [MFP-3/64"-Clear](#) [790-3012](#) [MHHT-4-15K2-G-104](#) [8003012003](#) [MIL-LT-1-1/2-4-SP](#) [MIL-LT-1-1/2-9-STK](#) [MIL-LT-1/2-2-STK](#) [MIL-LT-3-0-SP](#) [MIL-LT-3/32-0-SP](#) [MIL-LT-3/32-6-SP](#) [MIL-LT-3/4-4-STK](#) [MIL-LT-3/4-6-SP](#) [839602-000](#) [8423-6](#) [FP301-116-48"-Clear](#) [FP301-12-6"-Clear](#) [FP301-1/4-48"-White-Hdr](#) [FP301-18-48"-Black-Hdr](#) [FP301-1/8-6"-Black](#) [FP301-18-6"-Black-Bulk](#) [FP301-316-48"-Blue-Hdr](#) [912229N002](#) [R280637030](#) [HDCW-5515-1000](#) [HDT-0300-48A-BLACK](#) [HDT-0400-48A-Black](#) [HDT-0800-48A-RED](#) [HDT1100-48A-BLK](#) [HDT1500-48A-BLK](#) [HDT-2000-48A-Black](#) [RHW-70/20-1200/ADH-0](#) [DWP-125-0.450-4-55MM-CS879](#) [156082-000](#) [MT5500-3/8-X-SP](#)