

REVISIONS					
REV	DATE	DESCRIPTION	BY	CHK	APPV
B2	04DEC2018	REVISD ECR-18-011775	TS	HY	

-1, -3: AS SHOWN
 -1, -3: 本図

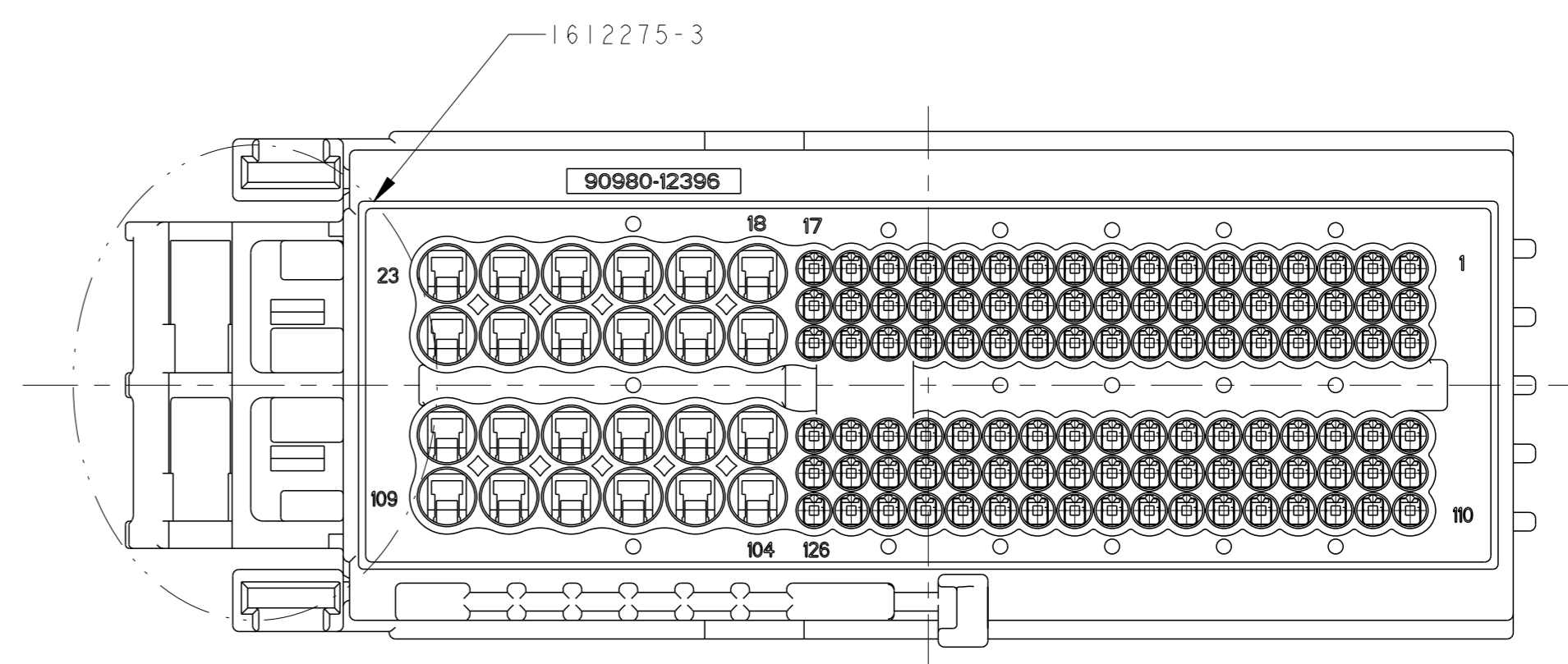
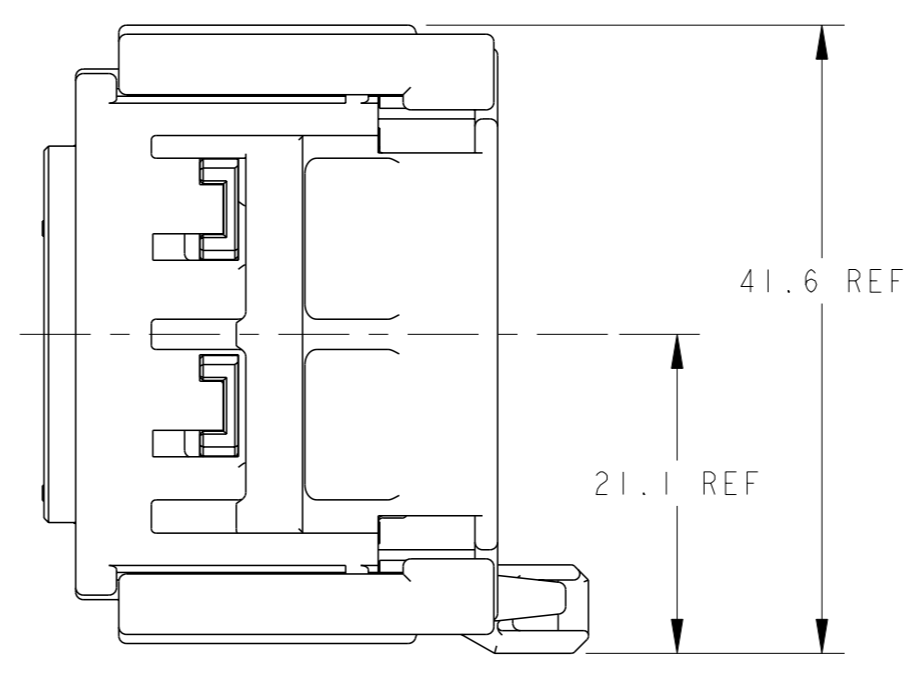
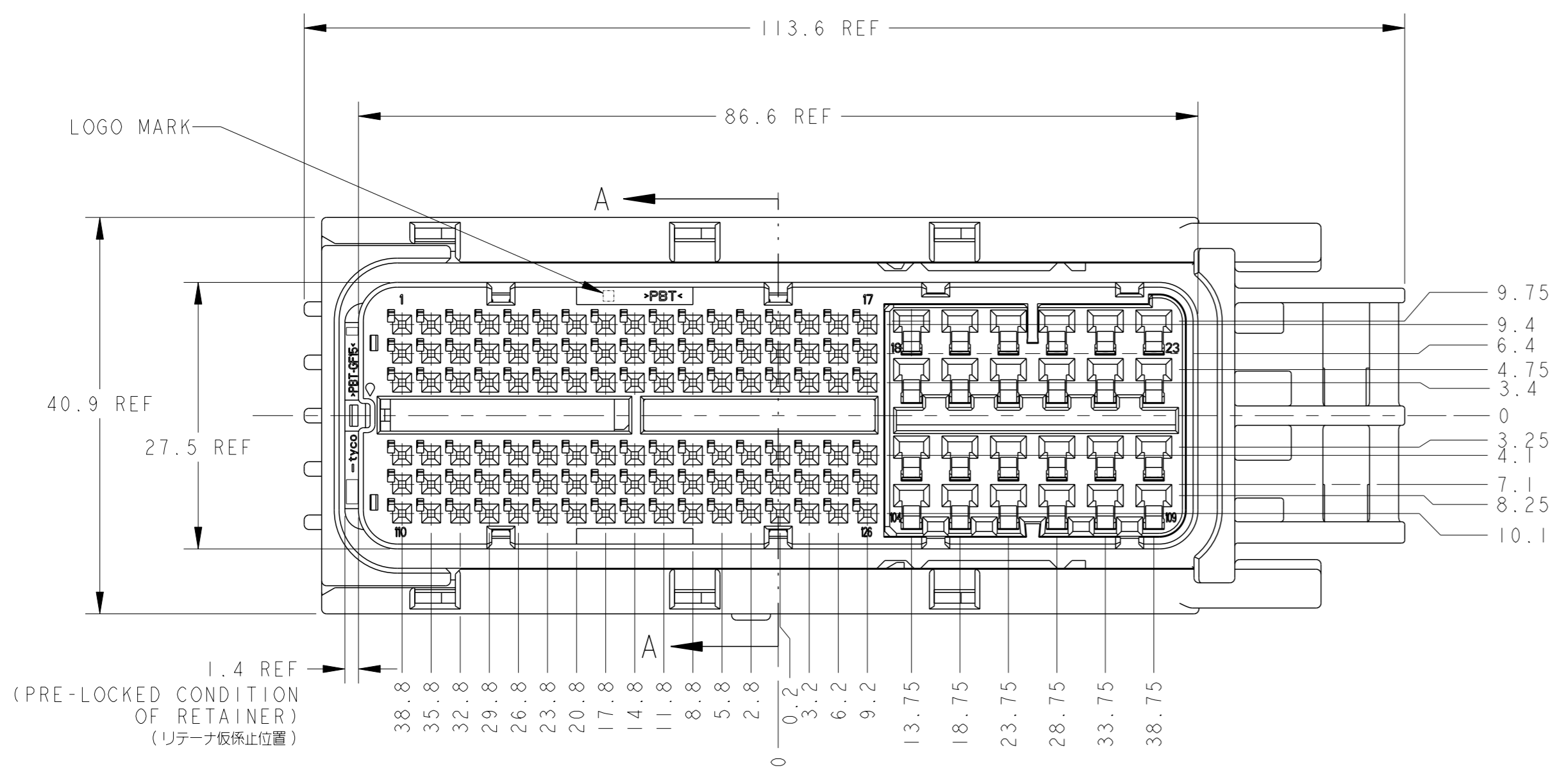
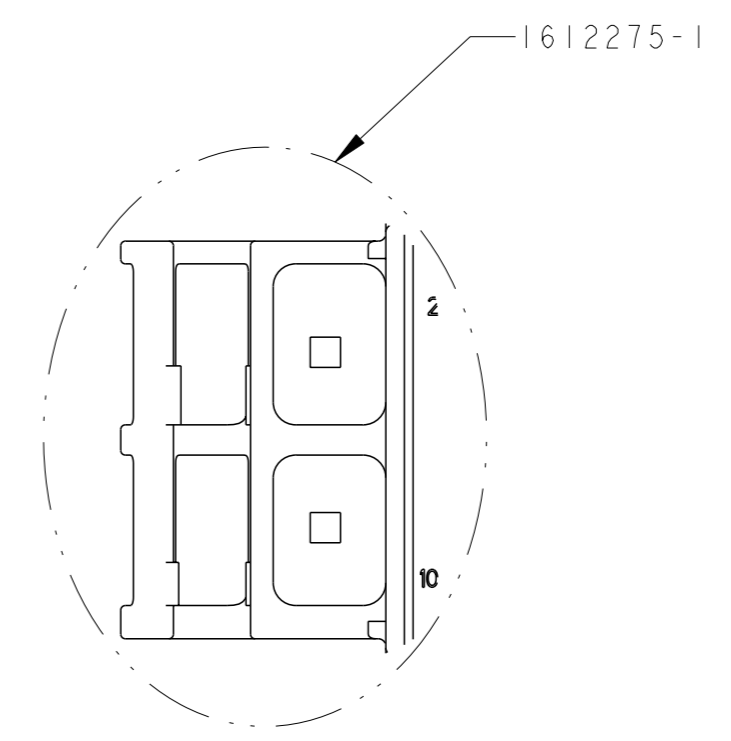
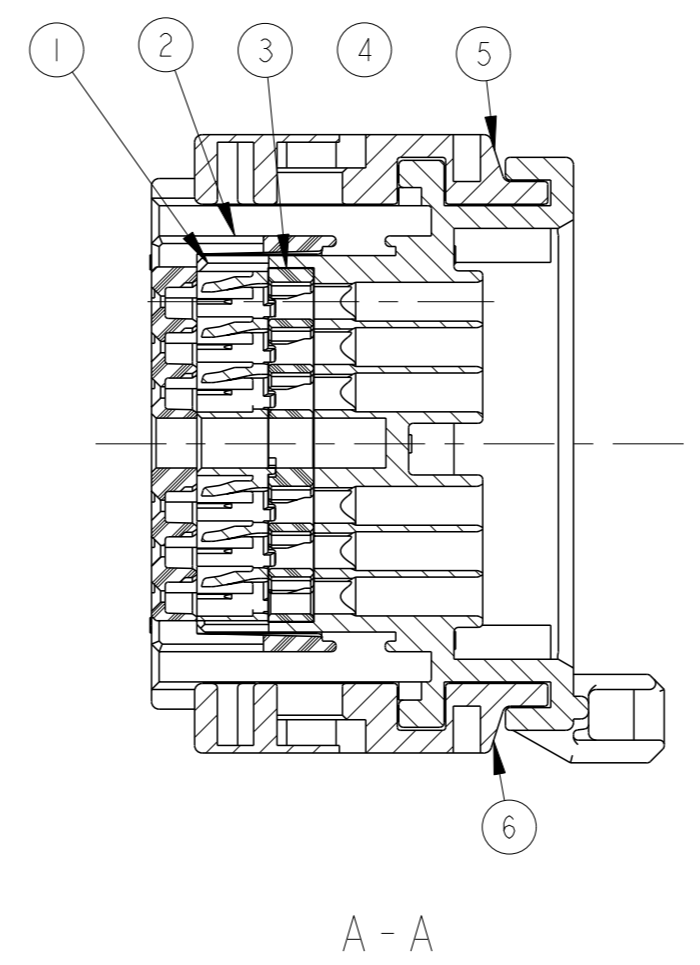
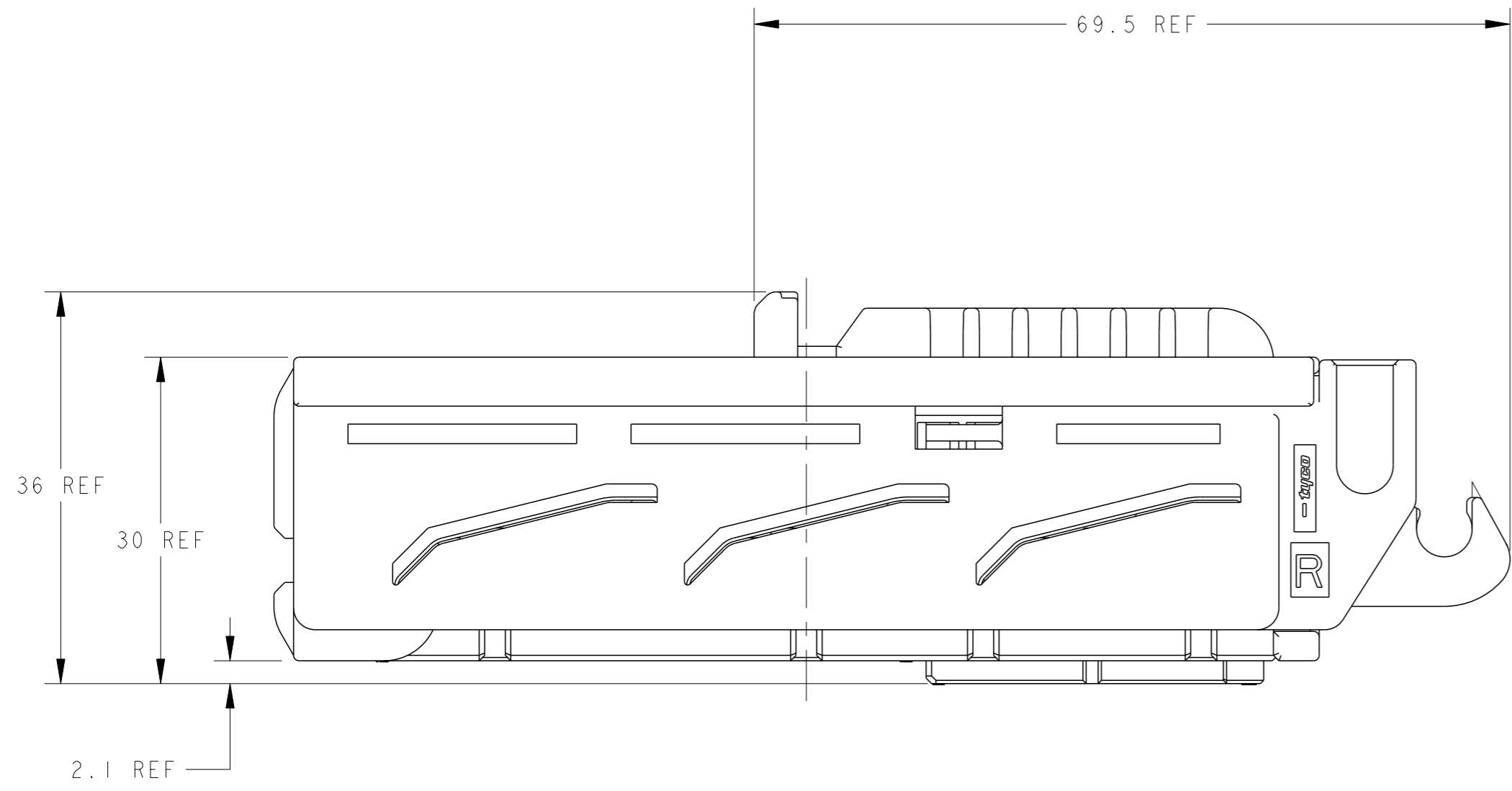


TABLE-1				OBSOLETE	OBSOLETE			
PAPER BOX ダンボール箱 ソフトトレイ プリスタートレイ	PAPER BOX ダンボール箱 ソフトトレイ プリスタートレイ	PAPER BOX ダンボール箱 ソフトトレイ プリスタートレイ	PAPER BOX ダンボール箱 ソフトトレイ プリスタートレイ	OUTER 外装	INNER 内装	PACKING STYLE 梱包形態		
I	I	I	I	BLACK	PBT	SLIDER-L	6	
I	I	I	I	BLACK	PBT	SLIDER-R	5	
I	I	I	I	REDDISH BROWN	SILICONE	SEAL RING	4	
I	—//—	I	—//—	LIGHT GRAY	PBT	RETAINER 89POS	3	
—//—	I	—//—	I	NATURAL		RETAINER 126POS		
I	I	I	I	BLACK	PBT	FRONT CAV	2	
I	—//—	—//—	—//—	BLACK	PBT	PLUG HSG 89POS FOR CLIP	1	
—//—	I	—//—	—//—			PLUG HSG 126POS FOR CLIP		
—//—	—//—	I	—//—			PLUG HSG 89POS		
—//—	—//—	—//—	I	—//—	—//—	PLUG HSG 126POS		
1612275-4	1612275-3	1612275-2	1612275-1	COLOR	MATERIAL	NAME	ITEM NO.	
89POS	126POS	89POS	126POS	AVAILABLE CAVITY POS 使用可能キャビティ数				
69 g	69 g	70 g	70 g	NET WEIGHT 質量				

- MATING CONNECTOR IS(P/N):
 1612275-1/-3(126POS):1612272(186POS)
 1612275-2/-4(89POS):1717313(149POS)
- HANDLING OF THIS PART SHOULD FOLLOW INSTRUCTION SHEET NO.411-78084.
- COMPONENTS OF THIS PART;SEE TABLE-1.
- THIS PRODUCT IS SHIPPED WITH RETAINER PRE-LOCKED POSITION.
- ASSEMBLED BY CUSTOMER.
- LEVER P/N FOR SUPPLEMENT(P/N):1612281
- PLEASE USE A WIRE COVER, WHEN YOU CANNOT SECURE THE WORKING SPACE BETWEEN A LEVER AND AN ELECTRIC WIRE.
- 1 AND -2 ARE THE CLIP NON-CORRESPONDENCES.

- 嵌合相手品番(P/N):
 1612275-1/-3(126POS):1612272(186POS)
 1612275-2/-4(89POS):1717313(149POS)
- 本製品の取扱は取扱説明書NO.411-78084に従うこと
- 本製品の構成部品:TABLE-1参照
- リテーナは密閉状態で出荷される。
- レバーは顧客にて組立てられる。
- 補給用レバー品番(P/N):1612281
- レバーと電線の隙間(作業スペース)が確保出来ない時はカバーを使用下さい。
- 1,-2は、フリップ非対応です。

THIS DRAWING IS A CONTROLLED DOCUMENT.

DIMENSIONS: 単位: mm

TOLERANCES UNLESS OTHERWISE SPECIFIED: 公差: ±0.3

MATERIAL: SEE TABLE

FINISH: SEE TABLE

OWN: S. SHISHIKURA Z2MAR06
 CHK: K. SAKAMAKI Z2MAR06
 APVD: S. ISOHATA Z2MAR06

PRODUCT SPEC: 108-5891
 APPLICATION SPEC: 114-5336

WEIGHT: SEE TABLE

CUSTOMER DRAWING

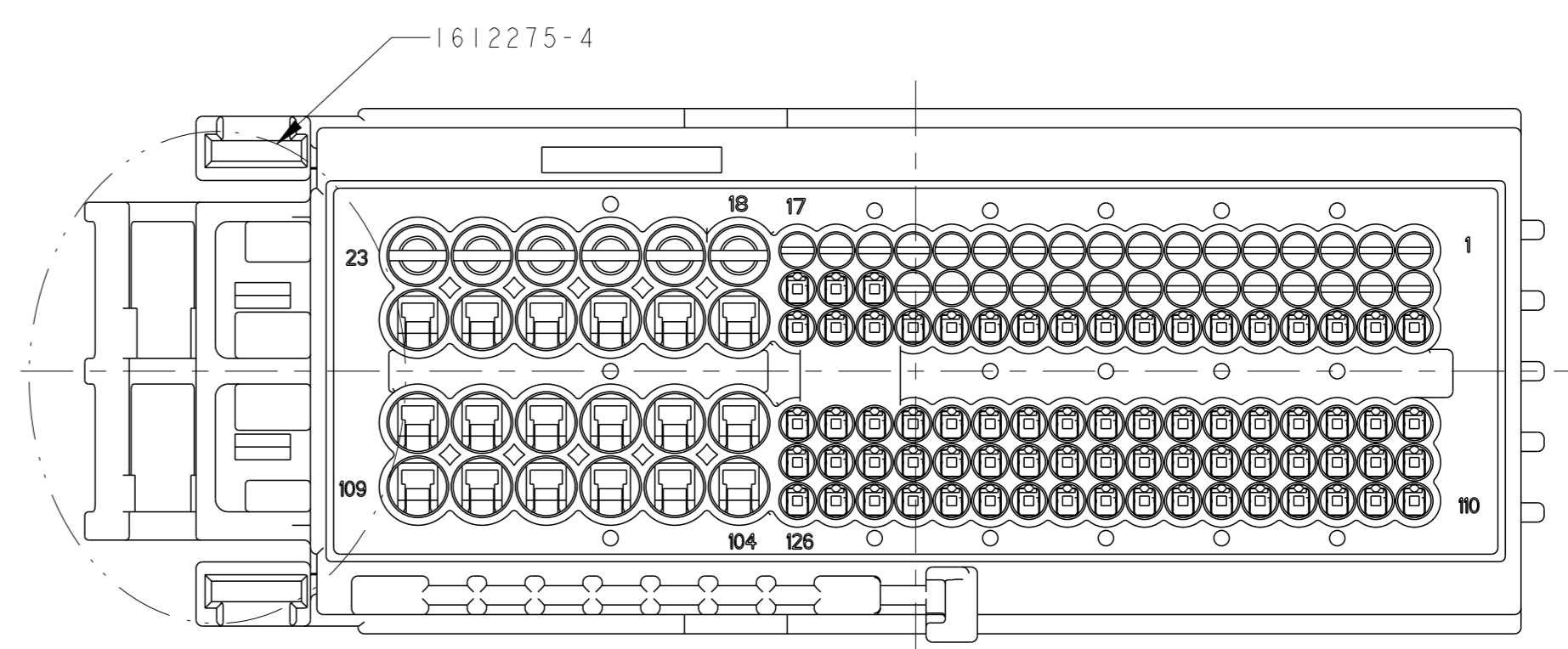
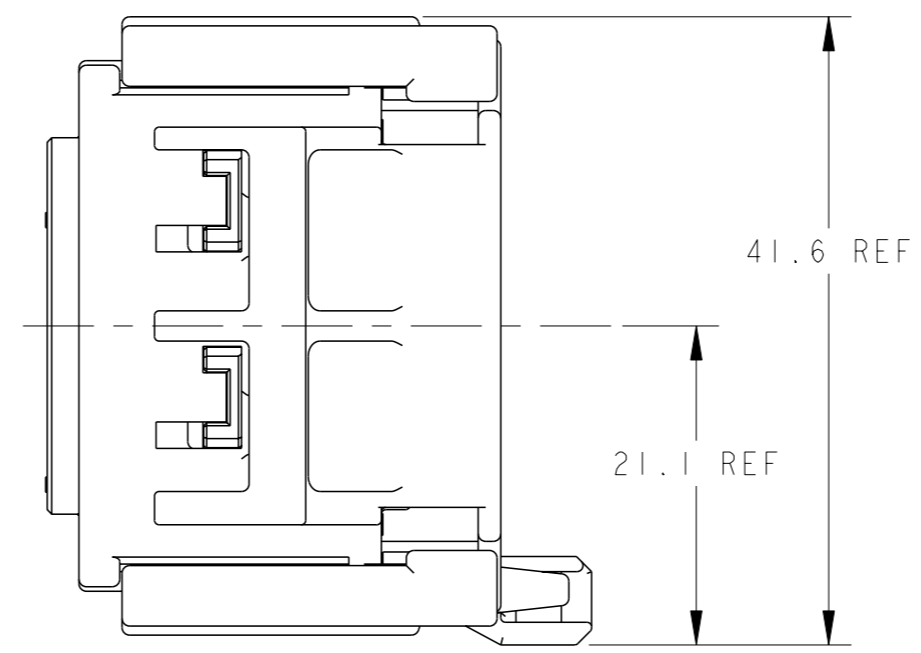
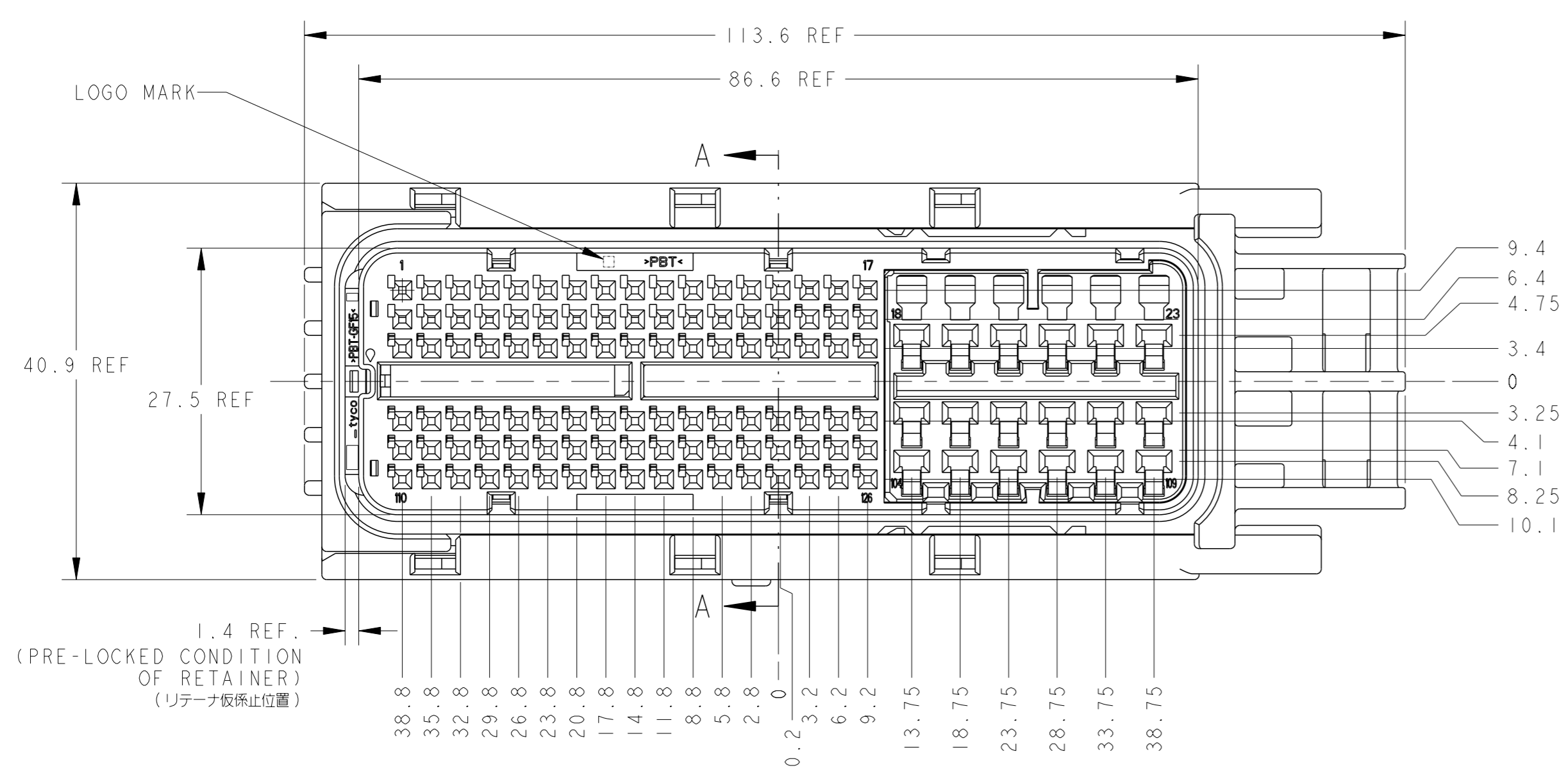
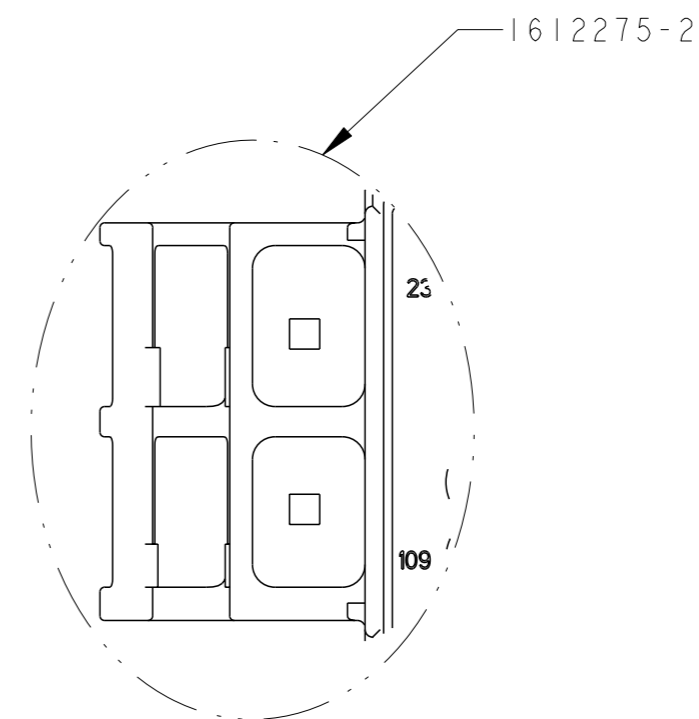
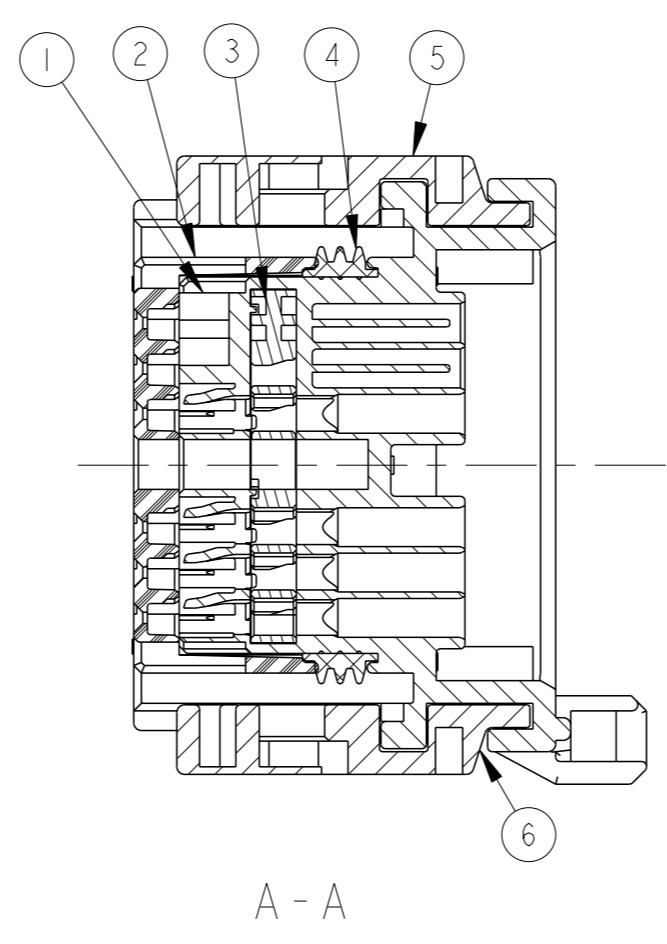
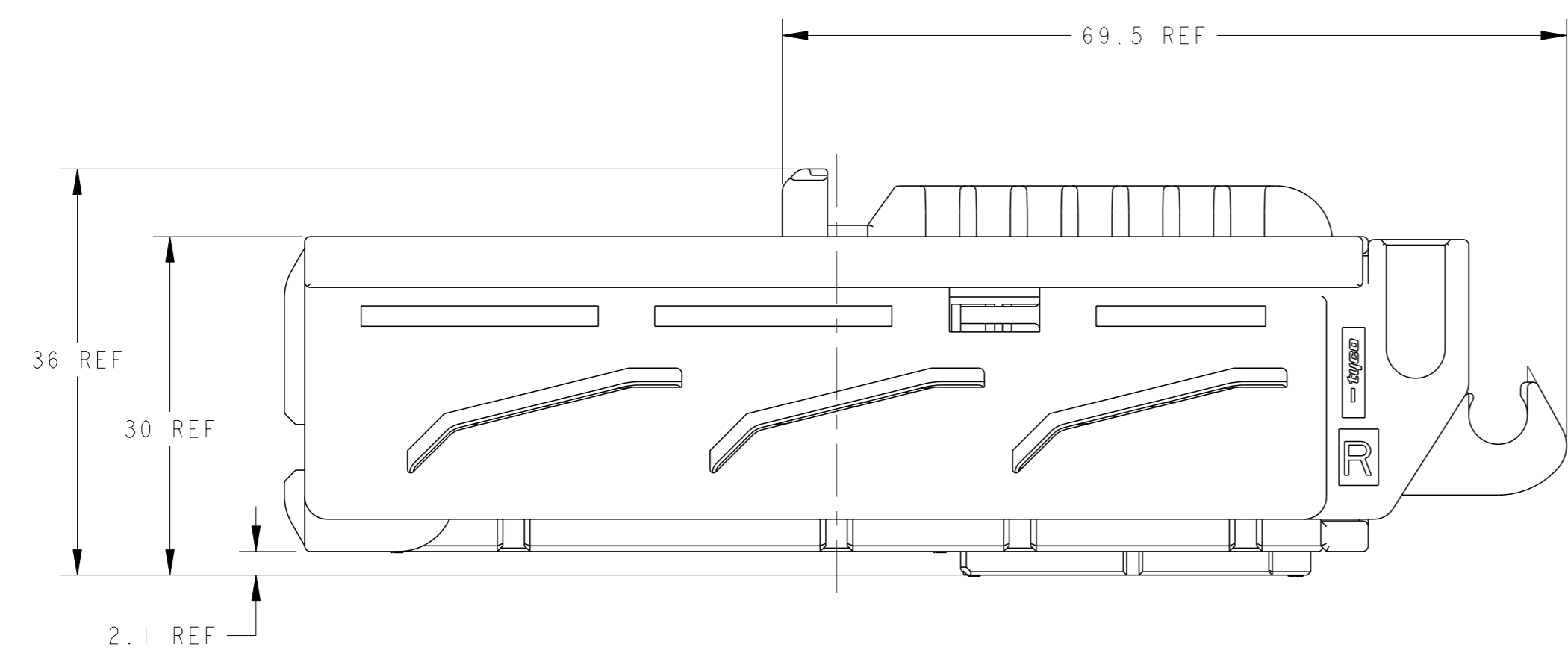
TE Connectivity
 SEALED EFI ECU
 0.64/2.311 I/O CONNECTOR
 126POS/89POS PLUG HOUSING ASSY

SIZE: 100779
 CAGE CODE: 1612275
 DRAWING NO: 1612275

RESTRICTED TO: 2:1 SHEET 1 OF 2 REV B2

REVISIONS				
REV	DATE	DESCRIPTION	OWN	APVD
-	-	SEE SHEET 1	-	-

-2, -4: AS SHOWN
-2, -4: 本図



THIS DRAWING IS A CONTROLLED DOCUMENT.		OWN	CHK	APVD	NAME
DIMENSIONS: 単位: mm		TOLERANCES UNLESS OTHERWISE SPECIFIED		PRODUCT SPEC	
0 PLC ±0.1		1 PLC ±0.1		APPLICATION SPEC	
2 PANGLE ±0.01		3 PLC ±0.001		WEIGHT	
4 PLC ±0.0001		FINISH		MATERIAL	
CUSTOMER DRAWING		SCALE 2:1		SHEET 2 OF 2	
REV B2		DRAWING NO. 1612275		CAGE CODE	
SIZE A1		CAGE CODE		DRAWING NO. 1612275	
NAME		SEALD EFI ECU		I/O CONNECTOR	
DESCRIPTION		126POS/89POS PLUG HOUSING ASSY		RESTRICTED TO	

X-ON Electronics

Largest Supplier of Electrical and Electronic Components

Click to view similar products for [Automotive Connectors](#) category:

Click to view products by [TE Connectivity](#) manufacturer:

Other Similar products are found below :

[003-018-000](#) [60403001](#) [60993906-B](#) [M902-2131](#) [M902-2161](#) [72.330.1035.1](#) [73.353.4028.0](#) [F119300-B](#) [F166900](#) [F258300-B](#) [F358300-B](#)
[F407400](#) [F444110](#) [F487000](#) [F509500B-B](#) [827153-1](#) [8N1515-32-24P](#) [9-1326729-8](#) [925474-1](#) [928905-1](#) [964562-4](#) [968782-1](#) [GT17SA-8DS-](#)
[HU](#) [98891-1012](#) [98947-1016](#) [12004147](#) [12004475-L](#) [12010290](#) [12010309-B](#) [12015454](#) [12020219-B](#) [12020308](#) [12041318-B](#) [12052225-L](#)
[12052466](#) [12059125](#) [12064869](#) [12004327-B](#) [12010503-B](#) [12015308](#) [12015384](#) [12015909](#) [1-21030-1](#) [12041254](#) [12041318](#) [12047946-B](#)
[12047957](#) [12047957-L](#) [12059473](#) [12066261](#)