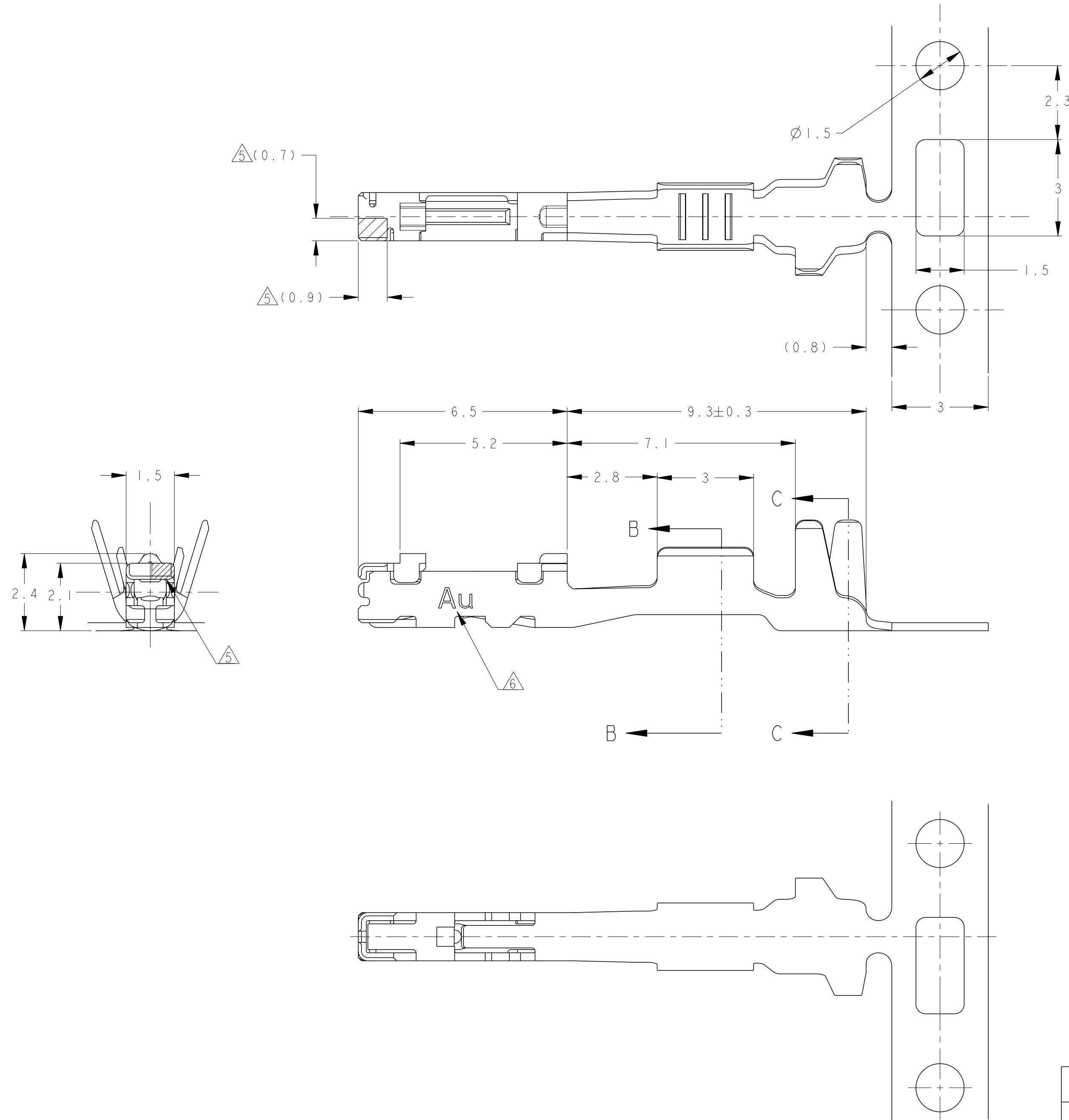


THIS DRAWING IS UNPUBLISHED. RELEASED FOR PUBLICATION 20  
 © COPYRIGHT 2015 ALL RIGHTS RESERVED.

LOC		DIST		REVISIONS			
P	LTR	DESCRIPTION		DATE	DWN	APVD	
	A	RELEASED		11MAY06	SS	KS	
	A1	REVISED		22NOV10	SS	HY	
	B	REVISED		18SEP15	KK	RK	



1. APPLICABLE WIRE RANGE;  
 CHFUS 0.35mm<sup>2</sup>  
 AVSS/AVSSH/AVSSX/AESSX/CAVS 0.3mm<sup>2</sup>  
 CAN 0.22mm<sup>2</sup>
  2. APPLICATION SPEC; 114-5336
  3. APPLICATOR FEED; 7.6mm.
  4. TAB P/N; 1612289
5. GOLD PLATED AREA FOR DISCRIMINATION.  
 6. MARKING FOR IDENTIFICATION.

1. 適用電線:  
 CHFUS 0.35mm<sup>2</sup>  
 AVSS/AVSSH/AVSSX/AESSX/CAVS 0.3mm<sup>2</sup>  
 CAN 0.22mm<sup>2</sup>
  2. 取付適用規格: 114-5336
  3. アプリケータ送りのピッチ: 7.6mm
  4. 適用TAB型番: 1612289
5. 識別用金めっき範囲を示す。  
 6. 識別用刻印

5 6 SELECTIVE GOLD, TIN	1612290-2
PRE-TIN	1612290-1
FINISH	PART NO

THIS DRAWING IS A CONTROLLED DOCUMENT.		DWN S. SHISHIKURA CHK K. SAKAMAKI APVD S. ISOHATA	IIMAY06 IIMAY06 IIMAY06	TE Connectivity	
DIMENSIONS: 単位: 桁 mm	TOLERANCES UNLESS OTHERWISE SPECIFIED: 一般公差 ±0.2 0-PLC ±0.3 1-PLC ±0.10 2-PLC ±0.10 3-PLC ±0.001 4-PLC ±0.0001 ANGLES ±3°00'	PRODUCT SPEC 108-5891	APPLICATION SPEC 114-5336	NAME SEALD 0.64 RECEPTACLE CONTACT	
MATERIAL 材料 COPPER ALLOY	FINISH 仕上 SEE TABLE	WEIGHT 0.16 g	SCALE 10:1	DRAWING NO A200779	RESTRICTED TO -
CUSTOMER DRAWING		CAGE CODE A200779	DRAWING NO C-1612290	SHEET 1	REV B

## X-ON Electronics

Largest Supplier of Electrical and Electronic Components

*Click to view similar products for [Automotive Connectors](#) category:*

*Click to view products by [TE Connectivity](#) manufacturer:*

Other Similar products are found below :

[003-018-000](#) [60403001](#) [60993906-B](#) [M902-2131](#) [M902-2161](#) [M902-2344](#) [72.330.1035.1](#) [73.353.4028.0](#) [F119300-B](#) [F166900](#) [F258300-B](#)  
[F358300-B](#) [F407400](#) [F444110](#) [F487000](#) [F509500B-B](#) [827153-1](#) [8N1515-32-24P](#) [9-1326729-8](#) [925474-1](#) [928905-1](#) [964562-4](#) [968782-1](#)  
[GT17SA-8DS-HU](#) [98891-1012](#) [98947-1016](#) [12004147](#) [12004475-L](#) [12010290](#) [12010309-B](#) [12015454](#) [12020219-B](#) [12041318-B](#) [12052225-](#)  
[L](#) [12052466](#) [12064869](#) [12004327-B](#) [12015308](#) [12015384](#) [12015909](#) [1-21030-1](#) [12041254](#) [12041318](#) [12047946-B](#) [12047957](#) [12047957-L](#)  
[12059473](#) [12066261](#) [12110546](#) [12110546-B](#)