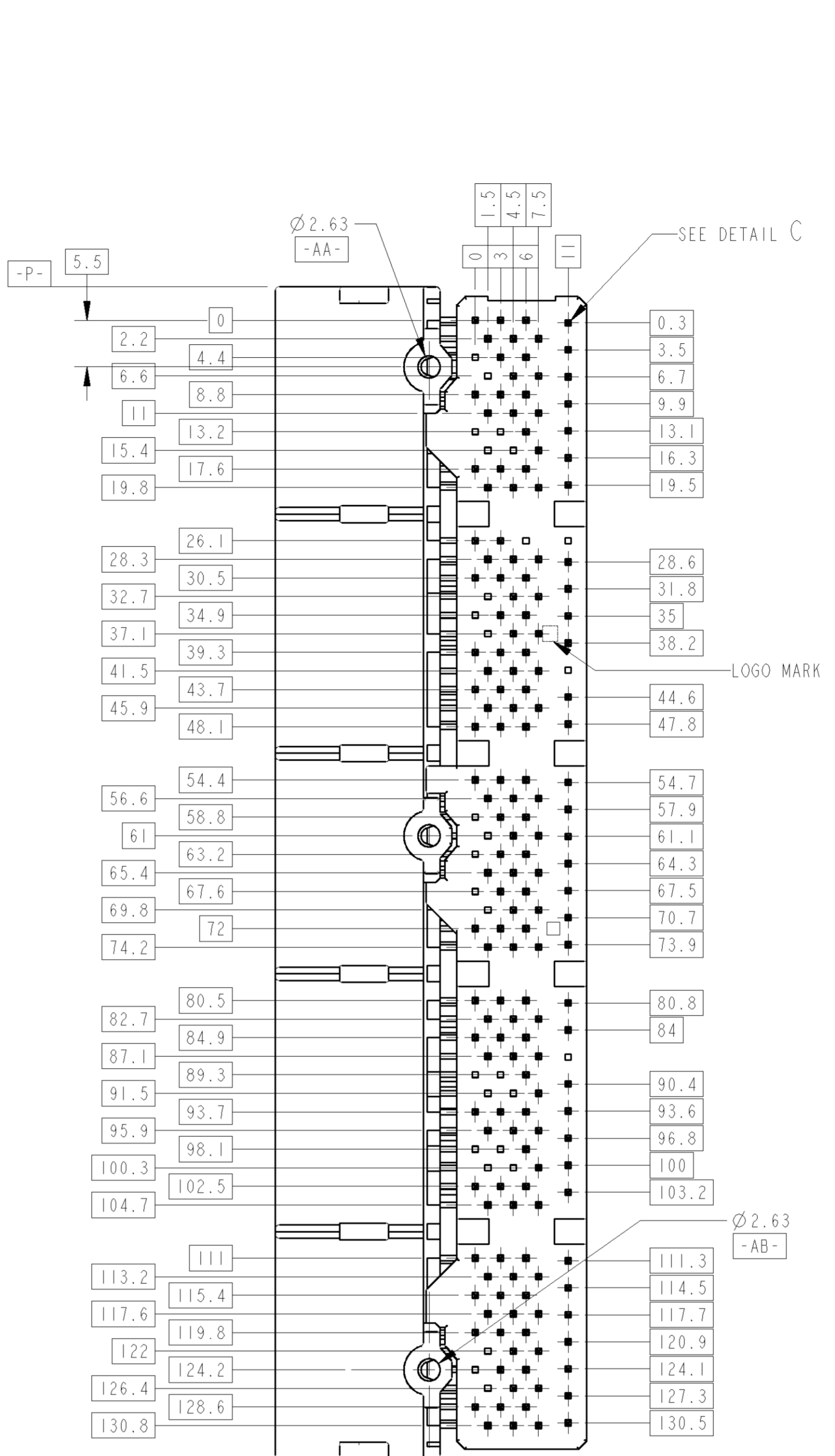
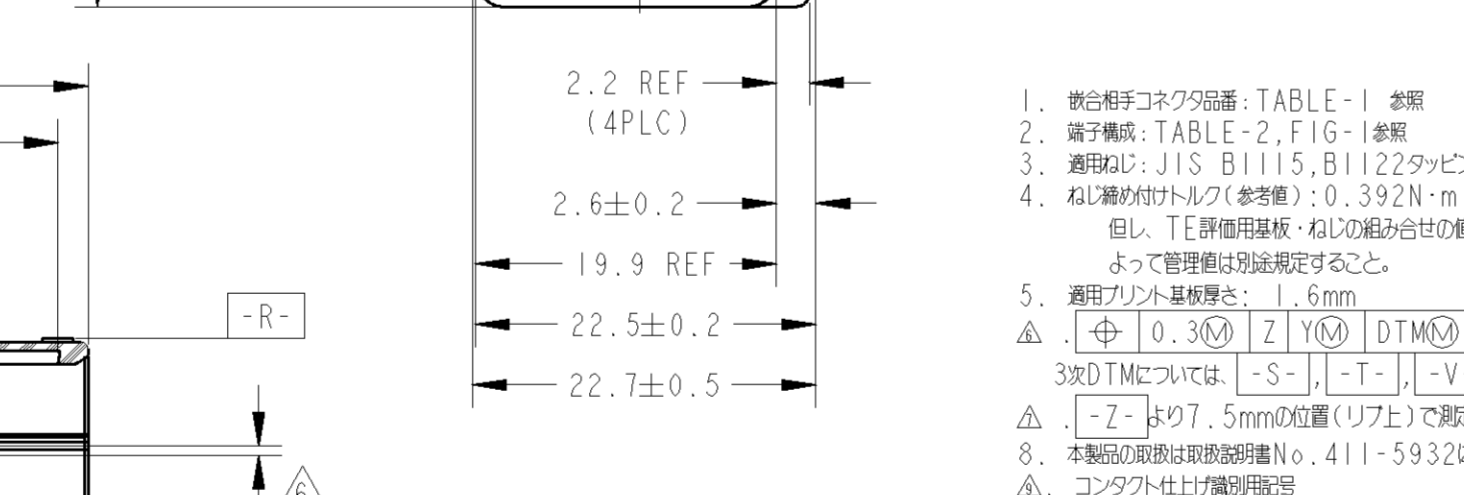
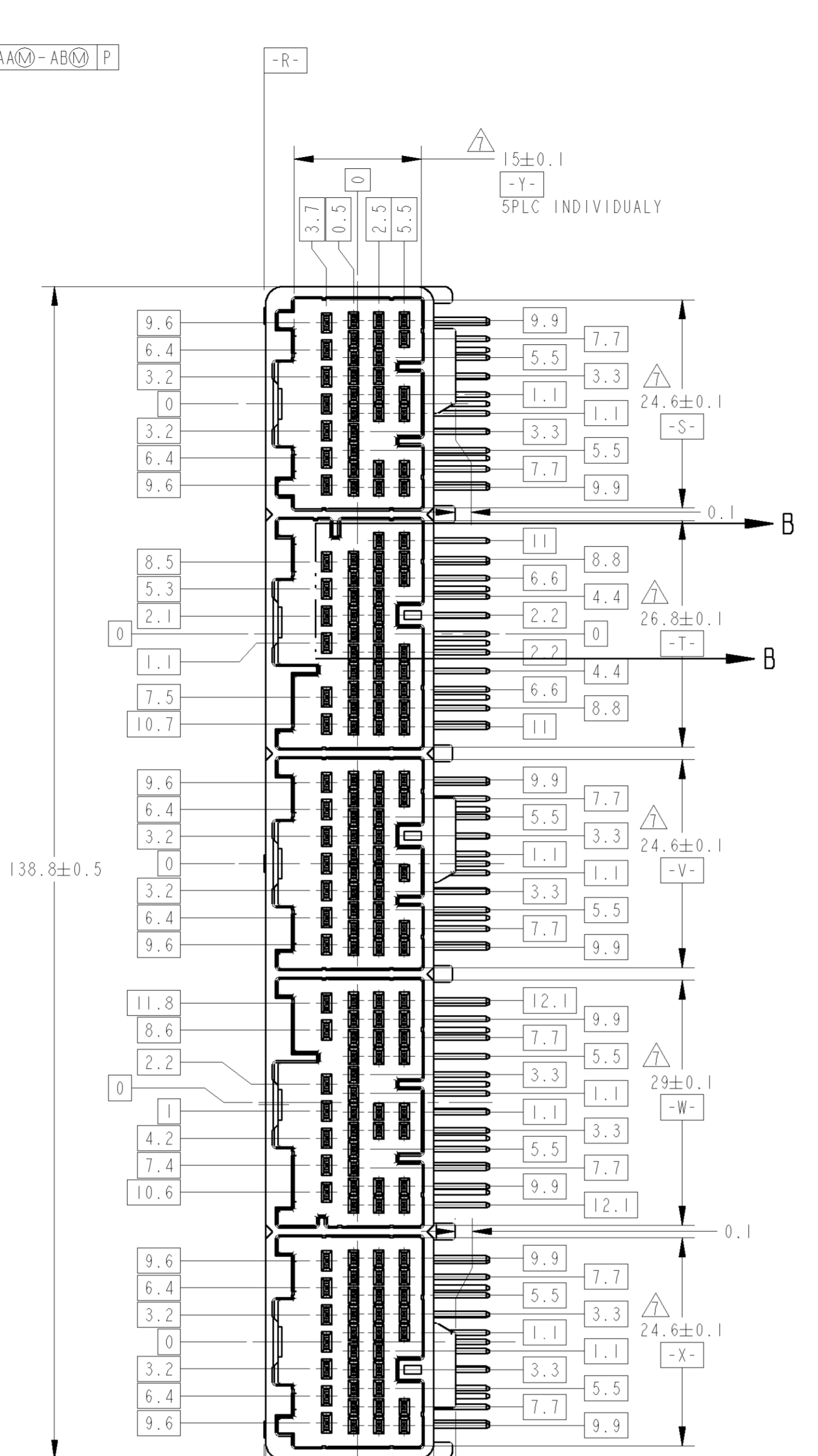
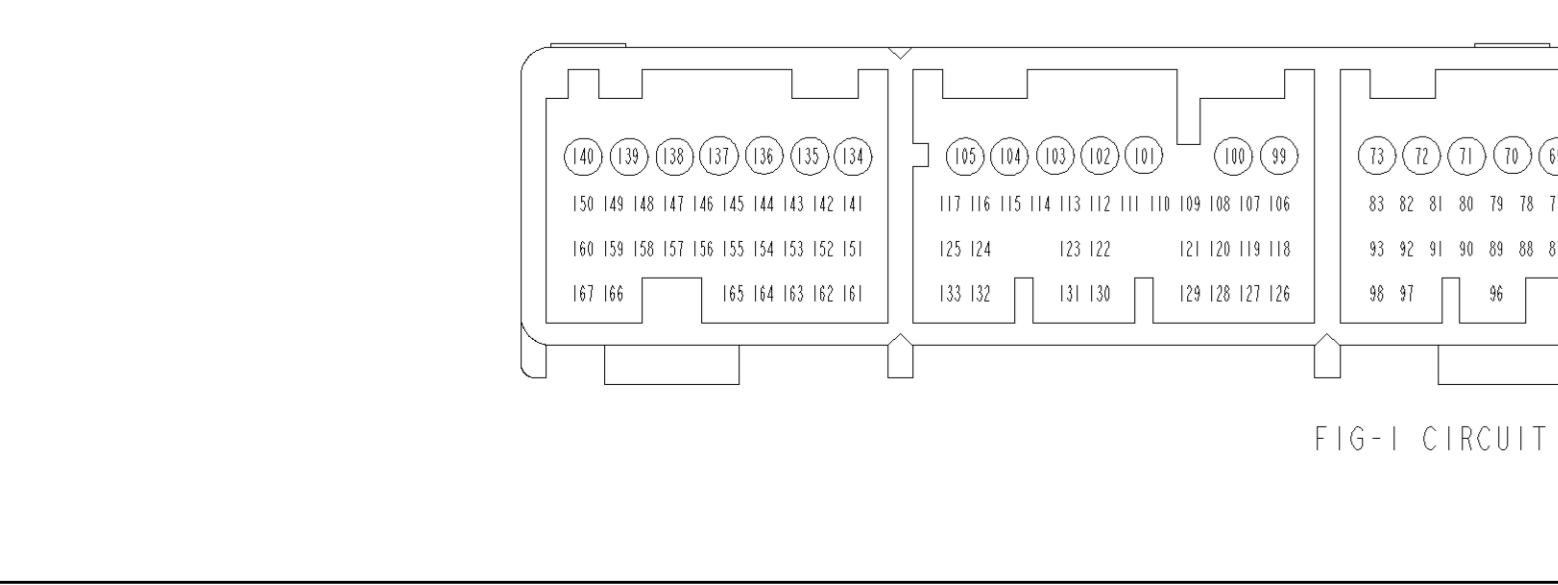
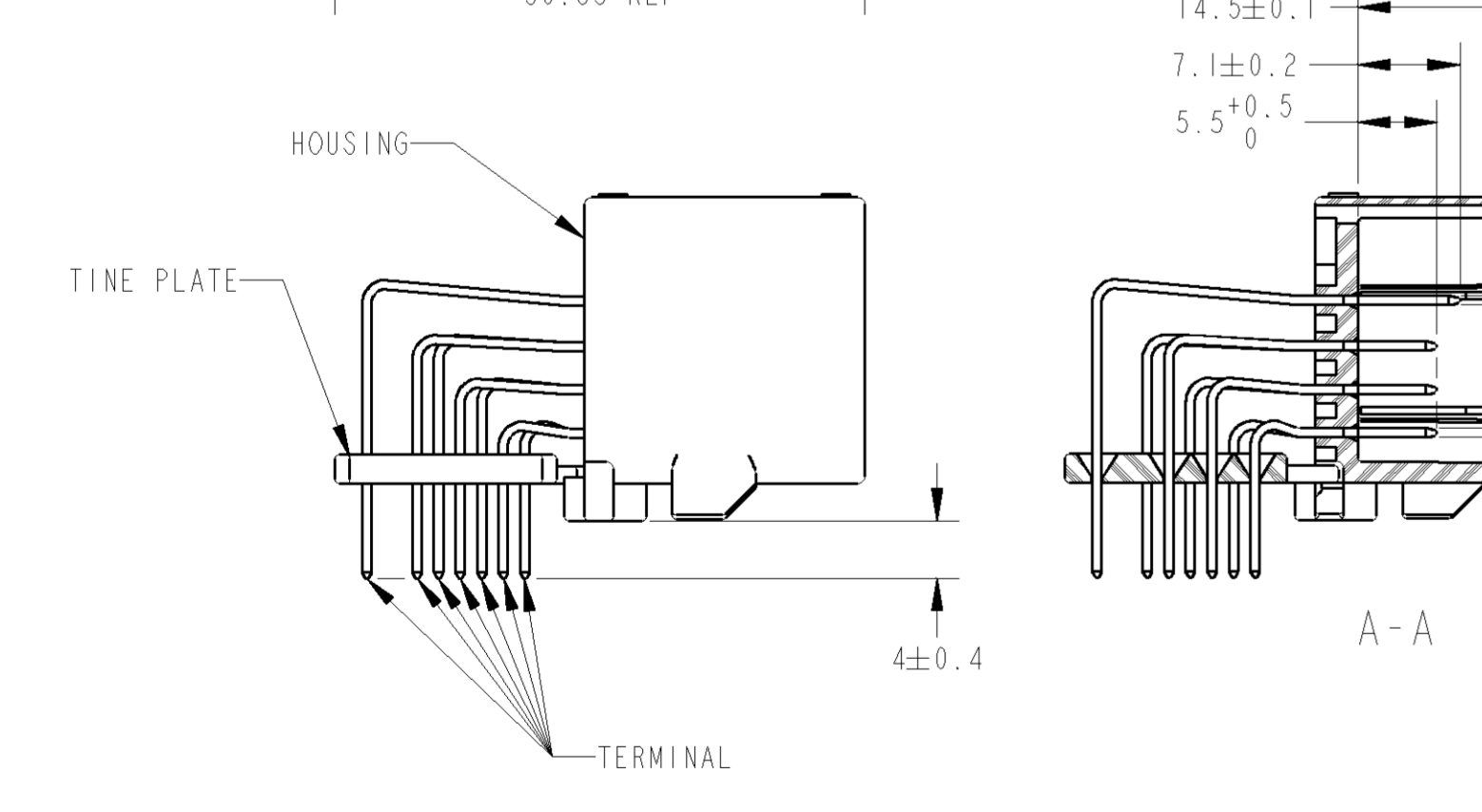
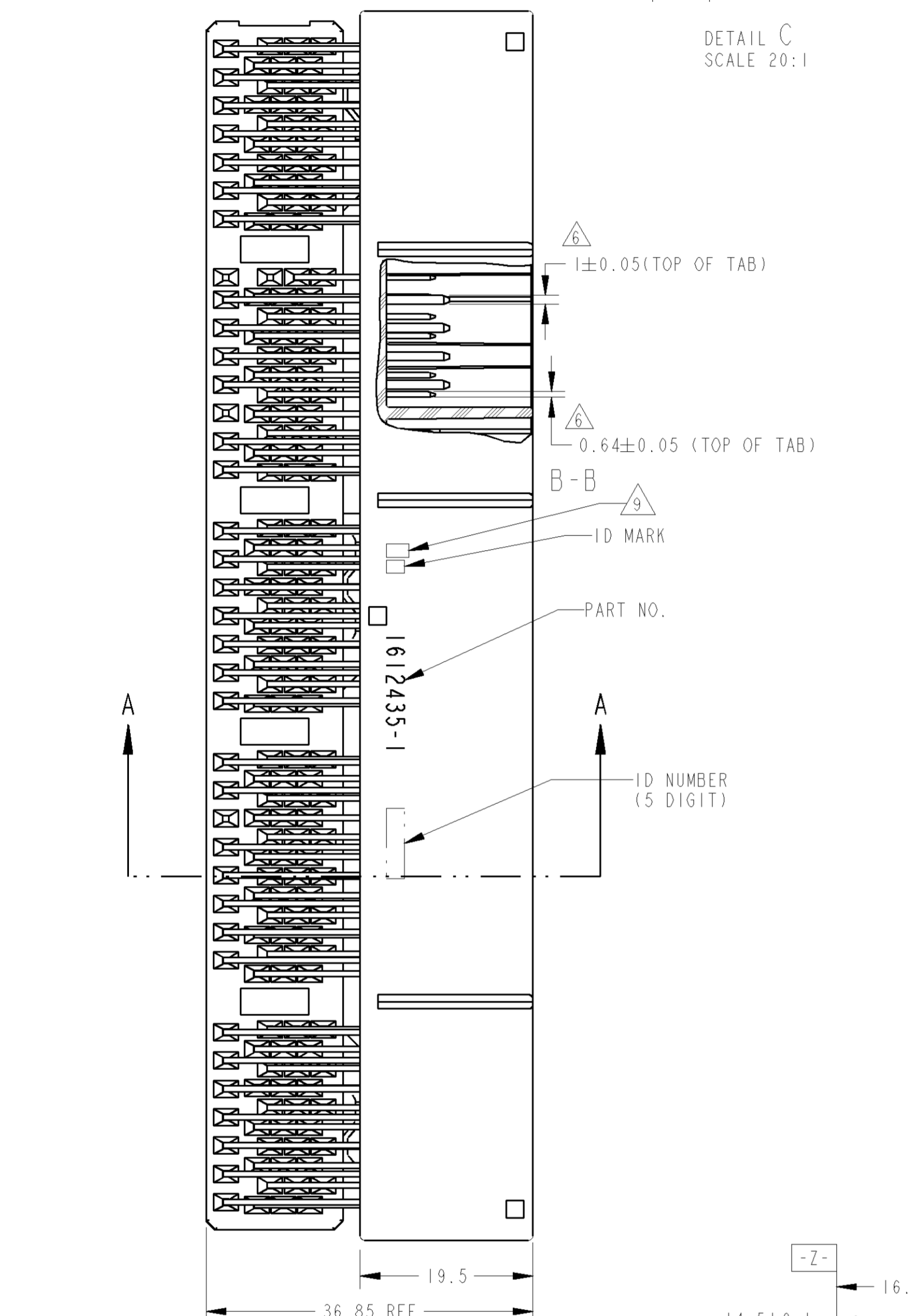


REV.	DATE	BY	CHK	APPV
B1	15JUL11	KF	HY	HY
B2	27AUG11	KF	HY	HY



1. 適合相手コネクタ品番: TABLE-1 参照
 2. 端子構造: TABLE-2, FIG-1参照
 3. 適用材: JIS B1115, B1122タッピンねじ, 径×2倍, 呼び径×3, 長さTABLE-3参照
 4. ねじ締めトルク(参考値): 0.392N・m MAX.
 但し, TE専用基板・ねじの組み合わせの場合, によって管理値は別途規定すること。
 5. 適用プリント基板厚さ: 1.6mm
 △: [0.30] Z Y [DTM] 出し
 3次DTMについては, [-S], [-T], [-V], [-W], [-X] を各々のブロックに適用すること。
 △: [-Z] は7.5mmの位置(リフト)で測定
 8. 本製品の取扱は取扱説明書 No. 411-5932に準ずること
 △: コネクタ仕様が識別用記号

TABLE-1

POS	FEMALE HOUSING TE P/N
34	1123337-1, -2 1674925-1
35	1123338-1, -2 1674558-1, -2
32	1123339-1, -2 1674922-1
35	1123340-1, -2 1674928-1
31	1123341-1, -2 1674919-1, -2

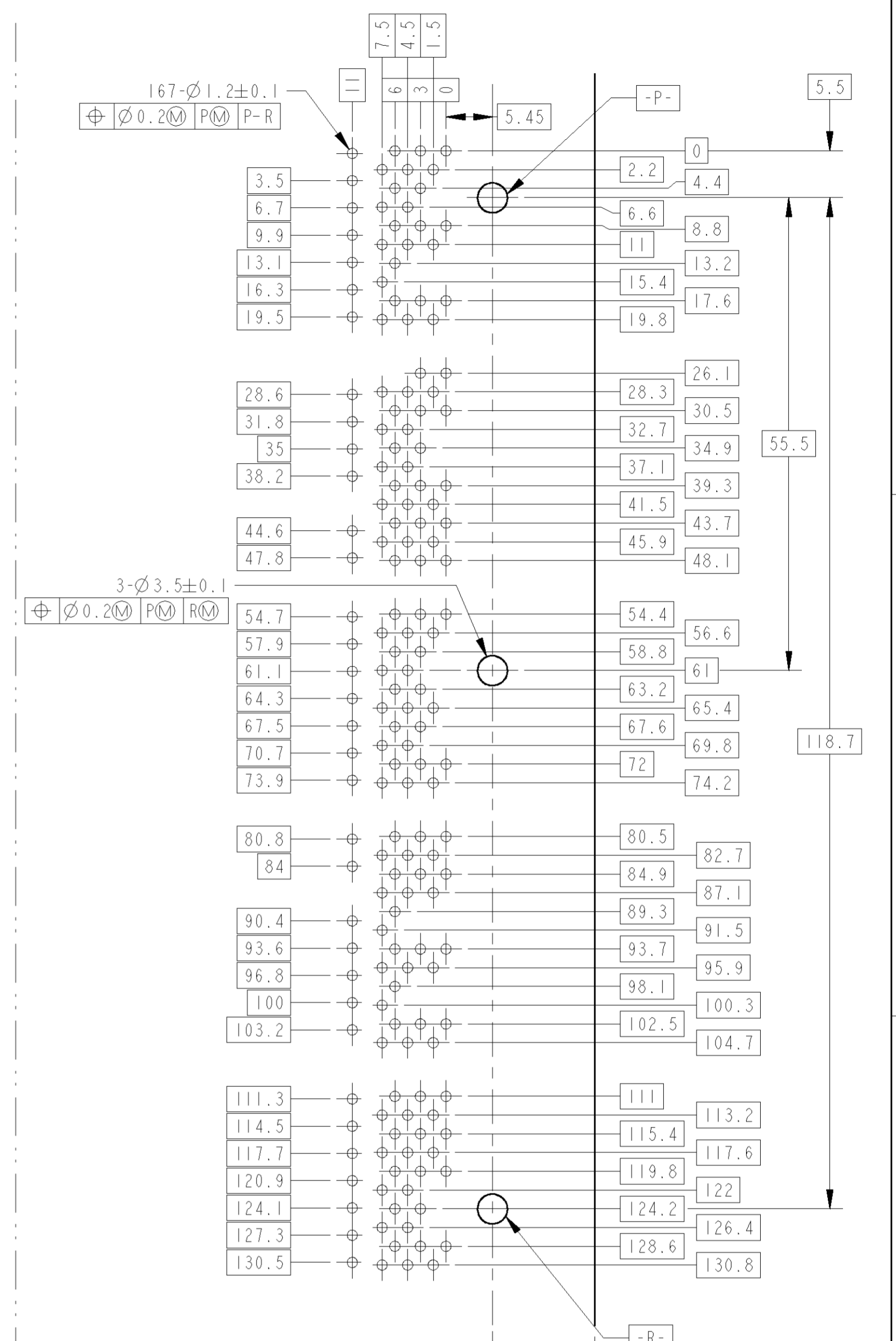
TABLE-2

TYPE	POSITION	CIRCUIT NUMBER
0.64(025)	133	8-31, 38-66, 74-98, 106-133, 141-167
1.0(040)	34	1-7, 32-37, 67-73, 99-105, 134-140

TABLE-3

FRONT BOARD THICKNESS (mm)	1.2	1.6
THICKNESS OF PCB (mm)	1.2	1.6
NOMINAL LENGTH OF SCREW (mm)	5	6

PLASTIC BOX	PLASTIC TUBE	130	SELECTIVE-TIN (MATTE)	SELECTIVE GOLD	8-31, 38-66, 74-98 106-129, 131-133, 141-167	BLACK	BLACK	1612435-5
PAPER BOX	PLASTIC TUBE	—	SAME AS 1612435-1			—	—	1612435-4
PLASTIC BOX	PLASTIC TUBE	—	SELECTIVE-TIN (MATTE)	SELECTIVE GOLD	18-31, 48-66, 84-98 118-133, 151-167	BLACK	NATURAL	1612435-1
OUTER	INNER	NO CONTACT CIRCUIT NO. 欠番	SOLDER SIDE 非田付部割	CONTACT SIDE 接触部	CIRCUIT NUMBER 回路番号	TINE PLATE	HOUSING	PART NUMBER 型番
PACKING STYLE 梱包形態			CONTACT FINISH コネクタ仕様			COLOR 色		
THIS DRAWING IS A CONTROLLED DOCUMENT.			DRAWN BY A. YAMAGUCHI 02DEC04			TE Connectivity		
DIMENSIONS: 0.1mm			CHK BY H. YAMAGAMI 02DEC04			APPROVED BY S. ISOHATA 02DEC04		
TOLERANCES UNLESS OTHERWISE SPECIFIED: ±0.3			PRODUCT SPEC: 108-5674			APPLICATION SPEC: 114-5217, -5250		
MATERIAL: SPS GF17 BRASS			FINISH: TIN GOLD			WEIGHT: 44.0g		
CUSTOMER DRAWING			SIZE: A1			CAGE CODE: 00779		
DRAWING NO: 114-5217, -5250			REV: 2:1			SHEET 1 OF 1		



X-ON Electronics

Largest Supplier of Electrical and Electronic Components

Click to view similar products for [Automotive Connectors](#) category:

Click to view products by [TE Connectivity](#) manufacturer:

Other Similar products are found below :

[003-018-000](#) [60403001](#) [60993906-B](#) [M902-2131](#) [M902-2161](#) [M902-2344](#) [72.330.1035.1](#) [73.353.4028.0](#) [F119300-B](#) [F166900](#) [F258300-B](#)
[F358300-B](#) [F407400](#) [F444110](#) [F487000](#) [F509500B-B](#) [827153-1](#) [8N1515-32-24P](#) [9-1326729-8](#) [925474-1](#) [928905-1](#) [964562-4](#) [968782-1](#)
[GT17SA-8DS-HU](#) [98891-1012](#) [98947-1016](#) [12004147](#) [12004475-L](#) [12010290](#) [12010309-B](#) [12015454](#) [12020219-B](#) [12041318-B](#) [12052225-](#)
[L](#) [12052466](#) [12064869](#) [12004327-B](#) [12015308](#) [12015384](#) [12015909](#) [1-21030-1](#) [12041254](#) [12041318](#) [12047946-B](#) [12047957](#) [12047957-L](#)
[12059473](#) [12066261](#) [12110546](#) [12110546-B](#)