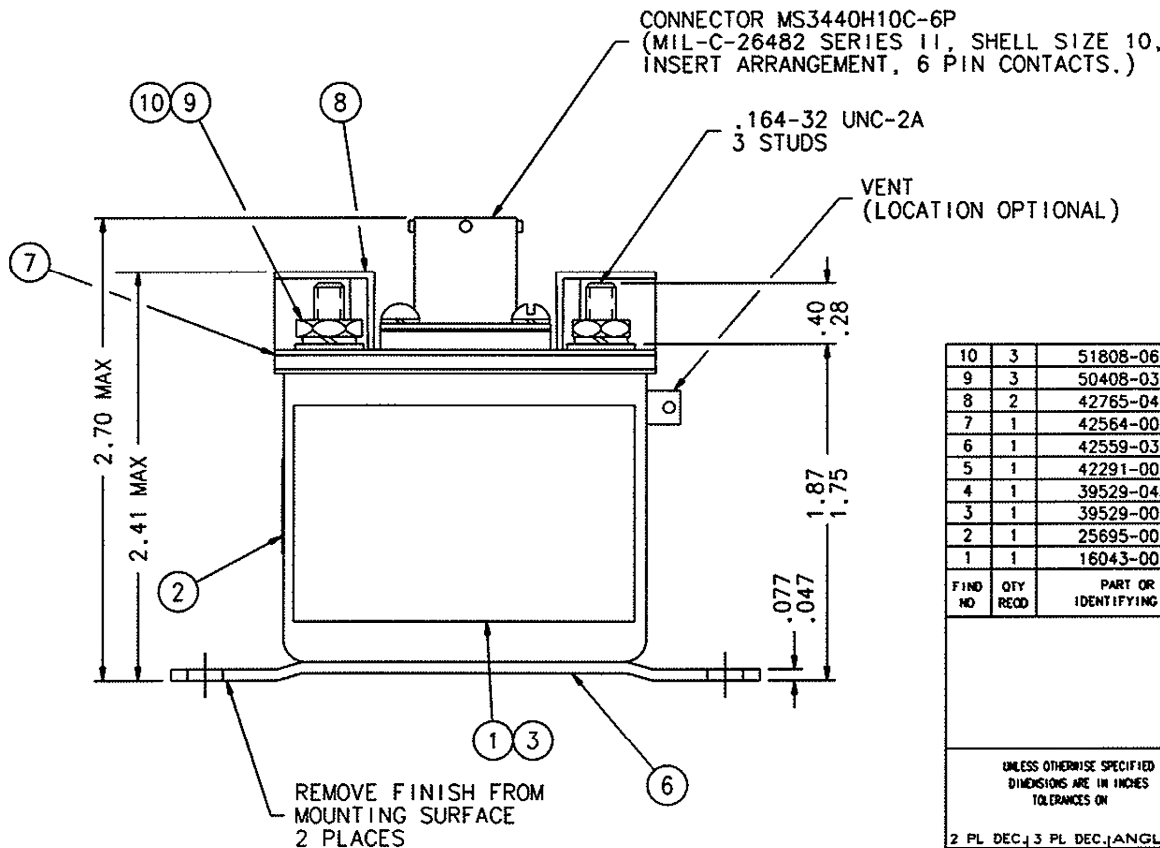
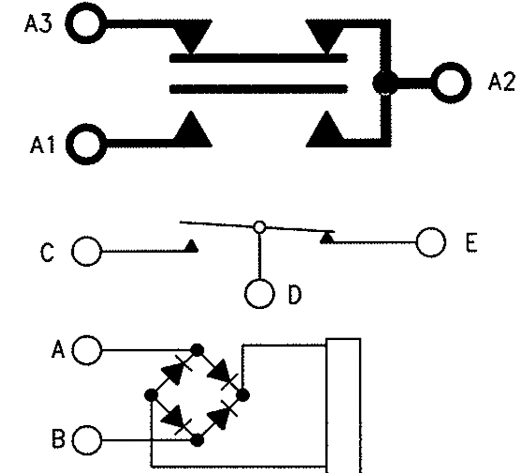
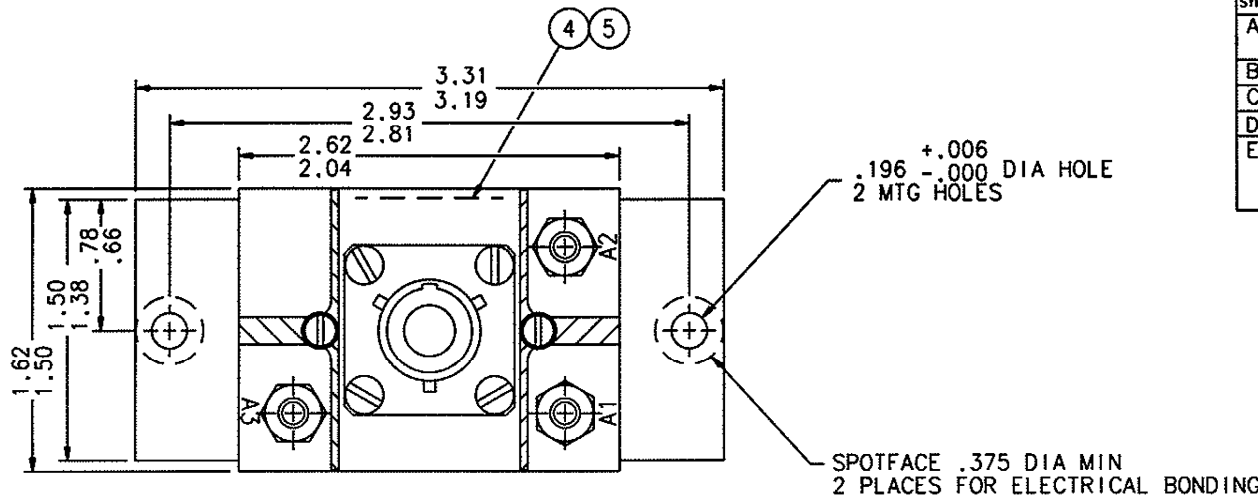


REVISIONS			RELEASED	APPROVED
SYM	DESCRIPTION	DATE		
A	30405 ITEM 3 WAS 32529-001, ITEM 4 WAS 32529-045, ITEM 6 WAS 42939-020, CORRECTED DIODE VIEW	96-06-12	RS	
B	31901 NOTE 4.3, BOUNCE WAS .002 SEC MAX	97/01/20	RS	
C	38013 ITEM 8 WAS 42765-010	98/12/01	RS	
D	39015 DELETED SECTION 1.8 ON SHEET 2	99/03/26	RS	
E	43228 NOTES 4.1 & 4.2 - OPERATE TIME WAS .040 SECOND MAX, RELEASE TIME WAS .030 SECOND MAX	00/09/28	CC	



FIND NO	QTY RECD	PART OR IDENTIFYING NO	NOMENCLATURE OR DESCRIPTION	FSCM NO	DRAWING OR SPECIFICATION	MATERIAL OR NOTE
10	3	51808-064	WASHER-LOCK-No.8 SPLIT		MS35338-99	BRONZE
9	3	50408-034	NUT-8-32 X 5/16 X 3/32 HEX		MS35649-2865	BRASS
8	2	42765-040	TERMINAL SHIELD			
7	1	42564-002	PLATE BASE COVER			
6	1	42559-030	CONTACTOR ASSEMBLY-PRIMARY			
5	1	42291-002	PLATE-WIRING DIAGRAM			
4	1	39529-045	OVERLAY			
3	1	39529-001	OVERLAY			
2	1	25695-001	PLATE-WARNING			
1	1	16043-001	PLATE-NAME			

UNLESS OTHERWISE SPECIFIED DIMENSIONS ARE IN INCHES TOLERANCES ON			HARTMAN® MANSFIELD, OHIO		
± .03	.015	± .5°	CONTACTOR, SPDT, 25 AMP AC, 50 AMP DC, .1 AMP SPDT AUX		
2 PL DEC, 3 PL DEC, ANGLES			SIZE	CODE IDENT	DWG NO.
			C	74063	NN-233D
			SCALE	SHEET 1 OF 2	

REVISIONS		RELEASED	
SYM	DESCRIPTION	DATE	APPROVED
E	SEE SHEET 1		

- 1.0 COIL DATA
- 1.1 NOMINAL OPERATING VOLTAGE 115 VAC
- 1.2 MAXIMUM OPERATING VOLTAGE 120 VAC
- 1.3 PICK-UP VOLTAGE 90 VAC MAX. (OVER TEMP. RANGE)
- * 90 VAC MAX. AT 25°C
- 92 VAC MAX. DURING HIGH TEMP. TEST.
- 95 VAC MAX. MAX. CONT. CURRENT TEST.
- 1.4 DROPOUT VOLTAGE 5-45 VAC (OVER TEMP. RANGE)
- * 5-45 VAC AT 25°C
- 1.6 COIL CURRENT AT 25°C & 120 VAC, * .06 AMP MAX.
- 1.7 DUTY CYCLE CONTINUOUS

- 2.0 CONTACT DATA (MAIN SPDT) AUXILIARY (SPDT)
- 115 VAC 60/400 HZ 28VDC

- 2.1 RESISTIVE 50 AMP .1 AMP
- 2.2 INDUCTIVE 50 AMP .1 AMP
- 2.3 MOTOR
- 2.4 LAMP
- 2.5 CONTACT DROP MAX. *150 MV INITIAL

- 175 MV AFTER START OF LIFE TESTS.
- 2.6 OVERLOAD 400 AMP AC N.O. CONTACTS
- 2.7 RUPTURE 500 AMP AC N.O. CONTACTS
- 2.8 MINIMUM OPERATING CYCLES 50,000
- 100,000 AT 25% RATED RESISTIVE LOAD
- 10,000 LOAD TRANSFER

- 2.9 AUX. MIN. OPERATING LEVEL
- 3 MILLIAMPS AT 6 VDC
- 2 OHM MAX. CONTACT RESISTANCE

- 3.0 ENVIRONMENTAL DATA
- 3.1 TEMPERATURE RANGE -55°C TO +71°C
- 3.2 ALTITUDE MAXIMUM 50,000 FT.
- 3.3 DIELECTRIC STRENGTH
- 3.3.1 AT SEA LEVEL (2-5 SEC.)

- COIL TO CASE AND *1250 VRMS
- AUXILIARY CONTACTS
- ALL OTHER POINTS *1250 VRMS
- AFTER LIFE TEST 1000 VRMS
- ALL POINTS

- 3.3.2 AT ALTITUDE 50,000 FEET (60 SEC)
- ALL POINTS 500 VRMS

- 3.4 INSULATION RESISTANCE *100 MEGOHMS MINIMUM AT 500 VDC, INITIAL.
- 50 MEG OHMS MINIMUM AT 500 VDC, AFTER ENVIRONMENTAL TESTS.

- 3.5 VIBRATION (SINUSOIDAL) 10 G'S (70-500 HZ)
- 5 G'S (500-2000 HZ)
- NO CONTACT OPENING IN EXCESS OF TWO (2) MILLISECONDS.
- 3.6 SHOCK (REF. MIL-STD-202 METHOD 213) 25 G'S FOR SIX (6) MILLI-SECOND'S, NO CONTACT OPENING IN EXCESS OF TWO (2) MILLISECONDS.
- 15 G'S

- 3.7 ACCELERATION
- 4.0 OPERATIONAL DATA
- 4.1 OPERATE TIME AT 25°C *115 VAC: .050 SECOND MAX.
- 4.2 RELEASE TIME AT 25°C *115 VAC: .050 SECOND MAX.
- 4.3 CONTACT BOUNCE TIME AT 25°C *115 VAC: .003 SECOND MAX.

- 5.0 PHYSICAL DATA
- 5.1 CONSTRUCTION SEALED (VENTED)
- 5.2 DIODES ARE: JANTX, (1000 PIV), GLASS CASE
- ZENER, JANTX, GLASS CASE

- 5.3 TERMINAL STRENGTH (REF: MIL-STD-202, METHOD 211) PULL TORQUE
- 35 LB. 20.0 LB.-IN

- 5.4 FINISH: COVER TO BE TREATED WITH BLACK EPOXY COATING TO MEET THE REQUIREMENTS OF PARA 4.6.12 OF MIL-C-5026E.

- 5.5 WEIGHT: 9 OZ MAX
- 6.0 NOTES

- 6.1 REMOVE FINISH FROM THE MOUNTING SURFACE, BOTH SIDES AT TWO (2) PLACES FOR ELECTRICAL BONDING.

- 6.2 IDENTIFICATION SHALL BE PER MIL-STD-1285 AND SHALL INCLUDE THE FOLLOWING INFORMATION:

RELAYS
FUNCTIONAL DESCRIPTION
CIRCUIT DIAGRAM

- 6.3 WARNING LEGEND SHALL READ: DO NOT DIELECTRIC COIL CIRCUIT

- 6.4 HARDWARE TERMINALS SHALL BE SUPPLIED WITH SPECIFIED HARDWARE.

- 6.5 THREADS SHALL BE PER MIL-S-7742.

*ASTERISK DENOTES 100% TESTING BY PRODUCTION

UNLESS OTHERWISE SPECIFIED DIMENSIONS ARE IN INCHES TOLERANCES ON		HARTMAN® MANSFIELD, OHIO	
		CONTACTOR, SPDT, 25 AMP AC, 50 AMP DC, .1 AMP SPDT AUX	
2 PL DEC. 3 PL DEC. ANGLES ± .03 .015 ± .5°	DR BY	CSC	00/10/05
	CHK BY	CC	00/10/10
	ENGR	DCA	10-11-03
	MFG	PP	10-12-00
RELEASE	6		
CONTR NO.	C	74063	NN-233D
GOVT APPVL			
SCALE			SHEET 2 OF 2

X-ON Electronics

Largest Supplier of Electrical and Electronic Components

Click to view similar products for [General Purpose Relays](#) category:

Click to view products by [TE Connectivity](#) manufacturer:

Other Similar products are found below :

[PCN-105D3MH,000](#) [59641F200](#) [5JO-1000CD-SIL](#) [LY1SAC110120](#) [5X827E](#) [5X837F](#) [5X840F](#) [5X842F](#) [5X848E](#) [LY2N-AC120](#) [LY2S-AC220/240](#) [LY2-US-AC120](#) [LY3-US-AC120](#) [LY4F-UA-DC12](#) [LY4F-UA-DC24](#) [LY4F-US-AC120](#) [LY4F-US-AC240](#) [LY4F-US-DC24](#) [LY4F-VD-AC110](#) [LYQ20DC12](#) [M115C60](#) [M115N010](#) [M115N0150](#) [6031007G](#) [603-12D](#) [61211T0B4](#) [61212T400](#) [61222Q400](#) [61243B600](#) [61243C500](#) [61243Q400](#) [61311BOA2](#) [61311BOA6](#) [61311BOA8](#) [61311C0A2](#) [61311COA1](#) [61311COA6](#) [61311F0A2](#) [61311QOA1](#) [61311QOA4](#) [61311T0D6](#) [61311TOA6](#) [61311TOA7](#) [61311TOB3](#) [61311TOB4](#) [61311U0A6](#) [61312Q600](#) [61312T400](#) [61312T600](#) [61313U200](#)