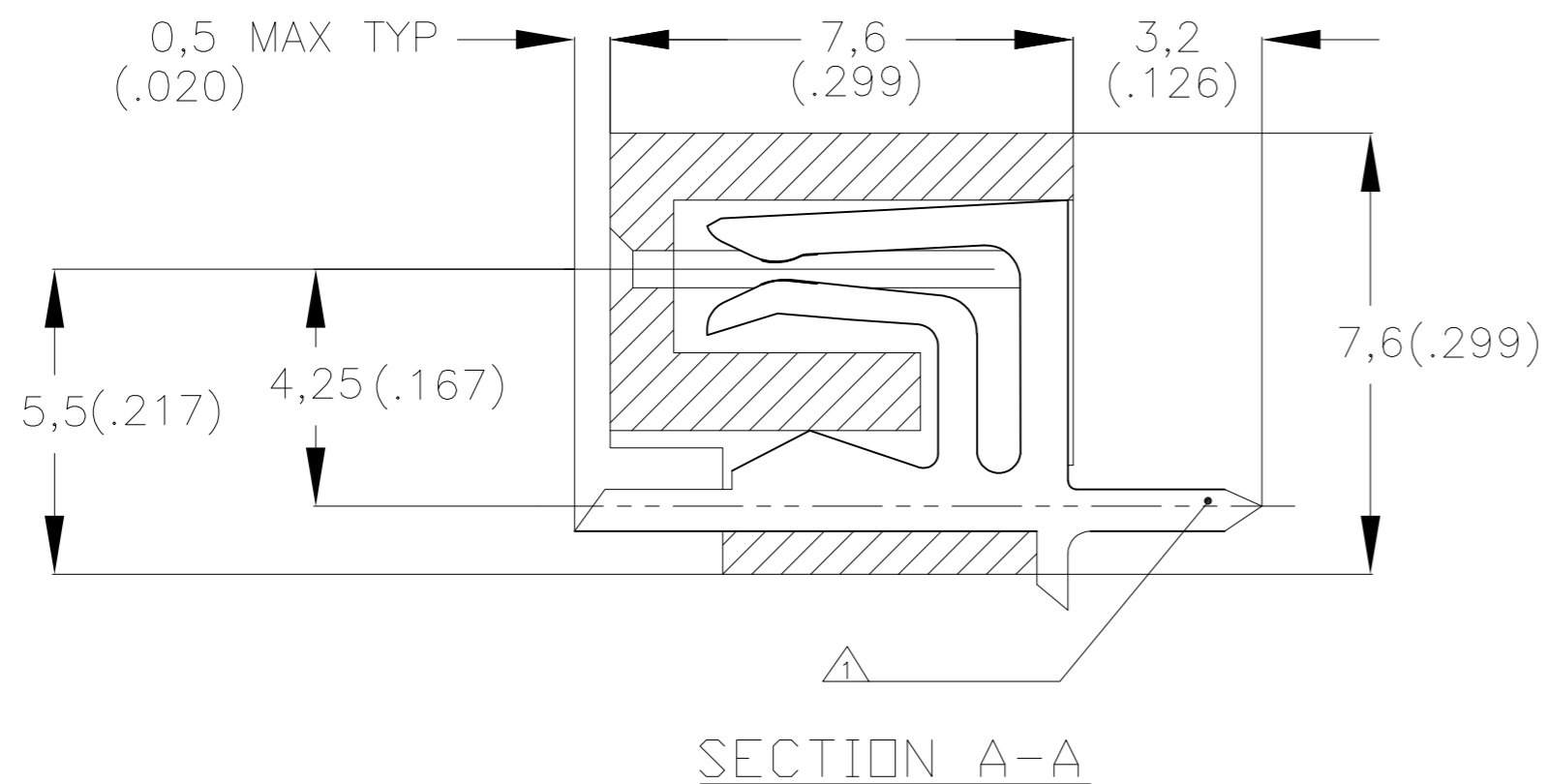
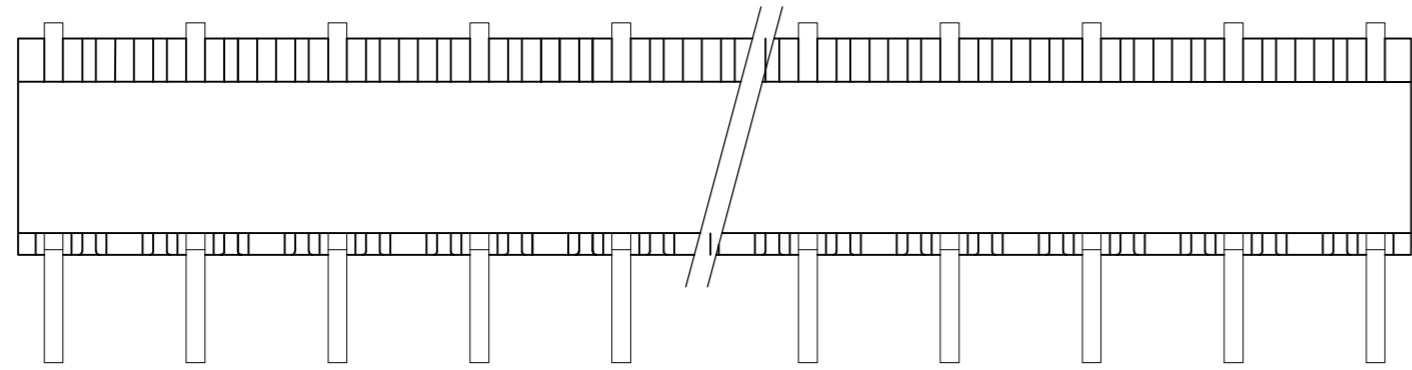
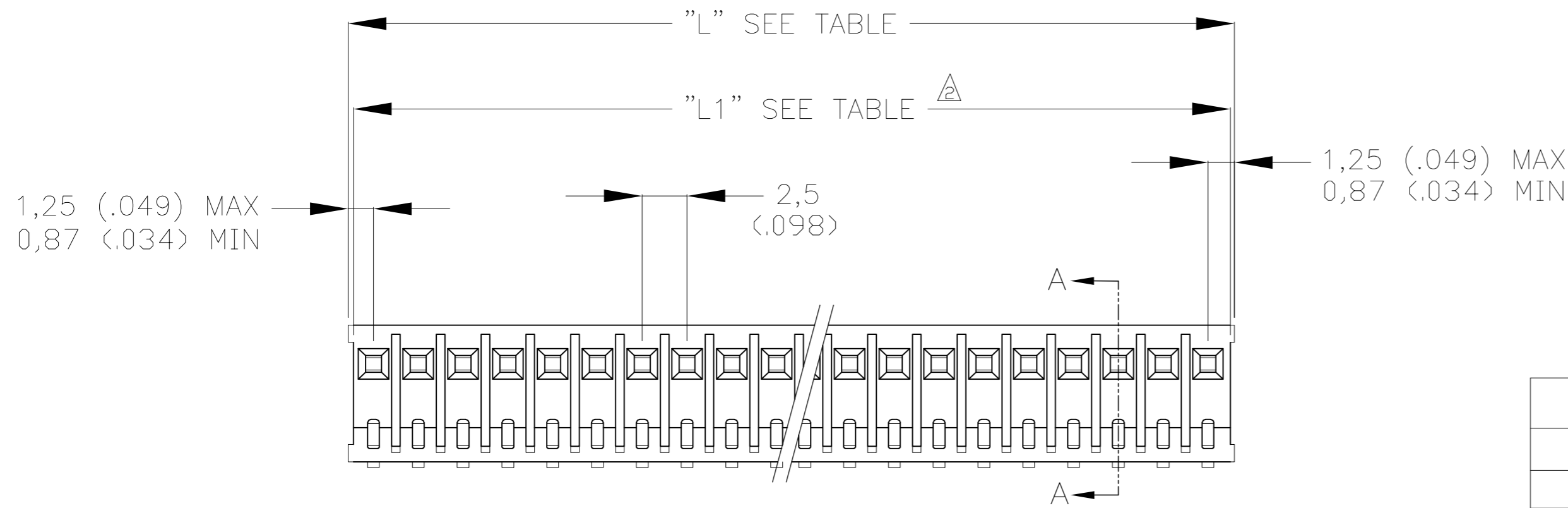


THIS DRAWING IS UNPUBLISHED. RELEASED FOR PUBLICATION
 © COPYRIGHT - By - ALL RIGHTS RESERVED.

LOC		DIST		REVISIONS			
P	LTR	DESCRIPTION		DATE	DWN	APVD	
H	-	F		HOUSING MATERIAL CHANGED TO CRASTIN SK643FR	25APR2013	SMT	RP



"L1" MAX. 3		"L" MAX		NUMBER OF LOADED POS.	ORDER NO.
mm	(inches)	mm	(inches)		
7,3	0,287	7,6	0,300	3	163680-1
9,8	0,386	10,1	0,398	4	163680-2
12,3	0,484	12,6	0,497	5	163680-3
14,8	0,582	15,1	0,595	6	163680-4
17,3	0,681	17,6	0,694	7	163680-5
19,8	0,779	20,1	0,792	8	163680-6
22,3	0,878	22,6	0,890	9	163680-7
24,3	0,976	25,1	0,989	1	163680-8 3
27,8	1,075	27,6	1,087	11	163680-9
29,8	1,173	30,1	1,186	12	1-163680-1
32,3	1,271	32,6	1,284	13	1-163680-2 3
34,8	1,370	35,1	1,382	14	1-163680-3 3
37,3	1,468	37,6	1,481	15	1-163680-4 3
39,8	1,567	40,1	1,579	16	1-163680-5 3
42,3	1,665	42,6	1,678	17	1-163680-6 3
44,8	1,764	45,1	1,776	18	1-163680-7 3
47,3	1,862	47,6	1,875	19	1-163680-8 3
49,8	1,960	50,1	1,973	20	1-163680-9
		52,6	2,071	21	2-163680-0 3
		55,1	2,170	22	2-163680-1
		57,6	2,268	23	2-163680-2
		60,1	2,367	24	2-163680-3 3

MATERIAL: HOUSING: GRAY CRASTIN SK643FR
 RECEPTACLES: BRASS: TIN PLATED OVER NICKEL-BARRIER

THIS DRAWING IS A CONTROLLED DOCUMENT.		DWN	16-03-1973	TE Connectivity FEMALE CONN.FOR COMMERCIAL INTERCONNECTION SYSTEM 2,5mm PITCH. TOP ENTRY
DIMENSIONS: mm [INCHES]		CHK	19-03-1973	
TOLERANCES UNLESS OTHERWISE SPECIFIED:		APVD	-	
0 PLC ± - 1 PLC ± - 2 PLC ± - 3 PLC ± - 4 PLC ± - ANGLES ± -		PRODUCT SPEC	-	
MATERIAL: SEE TABLE		FINISH	-	SIZE: A2
		WEIGHT	-	CAGE CODE: 00779
		CUSTOMER DRAWING		DRAWING NO: C=163680
		SCALE: 4:1	SHEET: 1 OF 1	RESTRICTED TO: -
				REV: F

X-ON Electronics

Largest Supplier of Electrical and Electronic Components

Click to view similar products for [Headers & Wire Housings](#) category:

Click to view products by [TE Connectivity](#) manufacturer:

Other Similar products are found below :

[892-18-020-10-001101](#) [58102-G61-06LF](#) [582553-1](#) [0009485154](#) [009176003701906](#) [0050291907](#) [LY20-4P-DT1-P1E-BR](#) [02.125.8002.8](#)
[609-3404](#) [61062-3](#) [61082-181009](#) [622-3653LF](#) [63453-116](#) [636-1030](#) [636-1427](#) [636-3427](#) [636-4007](#) [641938-9](#) [641991-4](#) [644827-2](#) [65817-010LF](#) [65817-015LF](#) [65863-015LF](#) [66207-023LF](#) [67095-007LF](#) [67601157](#) [68645-018](#) [68648-049](#) [70.362.1628.0](#) [70-4210](#) [70-4226B](#) [70-4853B](#) [707-5020](#) [707-5028](#) [71.350.2428.0](#) [71918-208LF](#) [71961-016LF](#) [733-134](#) [733-162](#) [754199-000](#) [760-3052](#) [787-8014-00](#) [79531-3000](#)
[FCN-360C032-B](#) [FCN-367T-T012/H](#) [FCN-723D010/2](#) [80.063.4001.1](#) [800-90-001-10-001000](#) [800-90-010-10-002000](#) [801-43-002-10-013000](#)