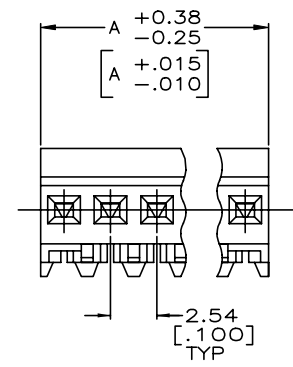
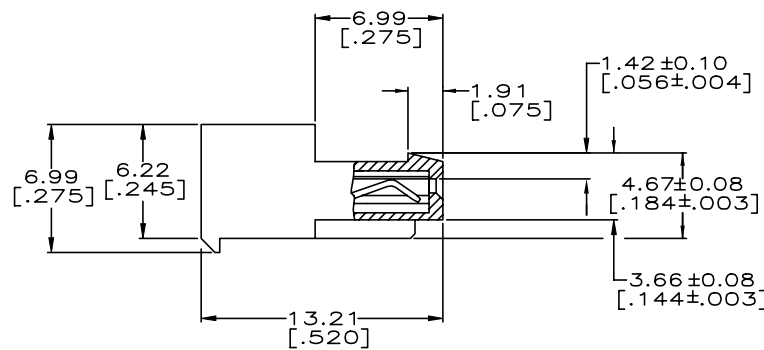
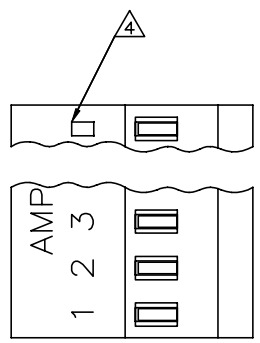


THIS DRAWING IS UNPUBLISHED. RELEASED FOR PUBLICATION
 © COPYRIGHT - By - ALL RIGHTS RESERVED.

| LOC | DIST | REVISIONS | | | | | |
|-----|------|-----------|-----|---------------------------|-----------|-----|------|
| CM | 00 | P | LTR | DESCRIPTION | DATE | DWN | APVD |
| | | Y | | REVISED PER ECR-20-000727 | 22MAY2020 | PC | SW |

| | | | | |
|-----|-------|---------|----|------------|
| YES | 71.12 | [2.800] | 28 | 5-640443-8 |
| YES | 68.58 | [2.700] | 27 | 5-640443-7 |
| YES | 66.04 | [2.600] | 26 | 5-640443-6 |
| YES | 63.50 | [2.500] | 25 | 5-640443-5 |
| YES | 60.96 | [2.400] | 24 | 5-640443-4 |
| YES | 58.42 | [2.300] | 23 | 5-640443-3 |
| YES | 55.88 | [2.200] | 22 | 5-640443-2 |
| YES | 53.34 | [2.100] | 21 | 5-640443-1 |
| YES | 50.80 | [2.000] | 20 | 5-640443-0 |
| YES | 48.26 | [1.900] | 19 | 4-640443-9 |
| YES | 45.72 | [1.800] | 18 | 4-640443-8 |
| YES | 43.18 | [1.700] | 17 | 4-640443-7 |
| YES | 40.64 | [1.600] | 16 | 4-640443-6 |
| YES | 38.10 | [1.500] | 15 | 4-640443-5 |
| YES | 35.56 | [1.400] | 14 | 4-640443-4 |
| YES | 33.02 | [1.300] | 13 | 4-640443-3 |
| YES | 30.48 | [1.200] | 12 | 4-640443-2 |
| YES | 27.94 | [1.100] | 11 | 4-640443-1 |
| YES | 25.40 | [1.000] | 10 | 4-640443-0 |
| YES | 22.86 | [.900] | 9 | 3-640443-9 |
| YES | 20.32 | [.800] | 8 | 3-640443-8 |
| YES | 17.78 | [.700] | 7 | 3-640443-7 |
| YES | 15.24 | [.600] | 6 | 3-640443-6 |
| YES | 12.70 | [.500] | 5 | 3-640443-5 |
| YES | 10.16 | [.400] | 4 | 3-640443-4 |
| YES | 7.62 | [.300] | 3 | 3-640443-3 |
| YES | 5.08 | [.200] | 2 | 3-640443-2 |

| | | | | | |
|---------------|------------------|--------------------|---------------|-----------------------|--------------------------|
| NO | 71.12 | [2.800] | 28 | 2-640443-8 | SUPERCEDED BY 5-640443-8 |
| NO | 68.58 | [2.700] | 27 | 2-640443-7 | SUPERCEDED BY 5-640443-7 |
| NO | 66.04 | [2.600] | 26 | 2-640443-6 | SUPERCEDED BY 5-640443-6 |
| NO | 63.50 | [2.500] | 25 | 2-640443-5 | SUPERCEDED BY 5-640443-5 |
| NO | 60.96 | [2.400] | 24 | 2-640443-4 | SUPERCEDED BY 5-640443-4 |
| NO | 58.42 | [2.300] | 23 | 2-640443-3 | SUPERCEDED BY 5-640443-3 |
| NO | 55.88 | [2.200] | 22 | 2-640443-2 | SUPERCEDED BY 5-640443-2 |
| NO | 53.34 | [2.100] | 21 | 2-640443-1 | SUPERCEDED BY 5-640443-1 |
| NO | 50.80 | [2.000] | 20 | 2-640443-0 | SUPERCEDED BY 5-640443-0 |
| NO | 48.26 | [1.900] | 19 | 1-640443-9 | SUPERCEDED BY 4-640443-9 |
| NO | 45.72 | [1.800] | 18 | 1-640443-8 | SUPERCEDED BY 4-640443-8 |
| NO | 43.18 | [1.700] | 17 | 1-640443-7 | SUPERCEDED BY 4-640443-7 |
| NO | 40.64 | [1.600] | 16 | 1-640443-6 | SUPERCEDED BY 4-640443-6 |
| NO | 38.10 | [1.500] | 15 | 1-640443-5 | SUPERCEDED BY 4-640443-5 |
| NO | 35.56 | [1.400] | 14 | 1-640443-4 | SUPERCEDED BY 4-640443-4 |
| NO | 33.02 | [1.300] | 13 | 1-640443-3 | SUPERCEDED BY 4-640443-3 |
| NO | 30.48 | [1.200] | 12 | 1-640443-2 | SUPERCEDED BY 4-640443-2 |
| NO | 27.94 | [1.100] | 11 | 1-640443-1 | SUPERCEDED BY 4-640443-1 |
| NO | 25.40 | [1.000] | 10 | 1-640443-0 | SUPERCEDED BY 4-640443-0 |
| NO | 22.86 | [.900] | 9 | 640443-9 | SUPERCEDED BY 3-640443-9 |
| NO | 20.32 | [.800] | 8 | 640443-8 | SUPERCEDED BY 3-640443-8 |
| NO | 17.78 | [.700] | 7 | 640443-7 | SUPERCEDED BY 3-640443-7 |
| NO | 15.24 | [.600] | 6 | 640443-6 | SUPERCEDED BY 3-640443-6 |
| NO | 12.70 | [.500] | 5 | 640443-5 | SUPERCEDED BY 3-640443-5 |
| NO | 10.16 | [.400] | 4 | 640443-4 | SUPERCEDED BY 3-640443-4 |
| NO | 7.62 | [.300] | 3 | 640443-3 | SUPERCEDED BY 3-640443-3 |
| NO | 5.08 | [.200] | 2 | 640443-2 | SUPERCEDED BY 3-640443-2 |



- 1 MATERIAL: CONNECTOR - NYLON UL94V-2 (GREEN). CONTACTS - 0.30[.012] THICK COPPER ALLOY BRIGHT TIN-LEAD .00203[.000080] MIN THICKNESS FOR 640443-2 THRU 2-640443-8. MATTE WHISKER MITIGATED TIN .00203[.000080] MIN THICKNESS OVER NICKEL UNDERPLATE FOR 3-640443-2 THRU 5-640443-8.
- 2 CONTACTS ACCEPT 28 AWG WIRE WITH 1.52[.060] MAX INSULATION DIAMETER.
- 3 CONTACTS MUST ACCEPT 0.64±0.03[.025±.001] POST AND REMAIN LOCKED IN POSITION.
- 4 IDENTIFICATION NUMBER FOR LAST CIRCUIT MAY NOT APPEAR ON ALL ASSEMBLIES.
- 5 DIMENSIONS IN BRACKETS ARE IN INCHES.
- 6 HOUSING FEATURES ARE: CLOSED END WITH LOCKING RAMP
- 7 OBSOLETE PARTS

| | | | | |
|--|--|----------------------------------|-----------------|--|
| THIS DRAWING IS A CONTROLLED DOCUMENT. | | DWN S. CARPENTER 11JUN2003 | TE Connectivity | |
| DIMENSIONS: mm [INCHES] | | CHK D. BOSSI 11JUN2003 | NAME | |
| TOLERANCES UNLESS OTHERWISE SPECIFIED: | | APVD D. BOSSI 11JUN2003 | PRODUCT SPEC | |
| 0 PLC ± | | 108-1050 | | |
| 1 PLC ± | | APPLICATION SPEC | | |
| 2 PLC ± 0.13 [0.005] | | 114-1019 | | |
| 3 PLC ± | | SIZE CAGE CODE DRAWING NO | | |
| 4 PLC ± | | A2 00779 C=640443 | | |
| 5 PLC ± | | RESTRICTED TO | | |
| FINISH | | WEIGHT | | |
| 1 | | CUSTOMER DRAWING | | |
| | | SCALE 5:1 SHEET 1 of 1 REV Y | | |

X-ON Electronics

Largest Supplier of Electrical and Electronic Components

Click to view similar products for [Headers & Wire Housings](#) category:

Click to view products by [TE Connectivity](#) manufacturer:

Other Similar products are found below :

[95000-104TRLF](#) [10135584-644402LF](#) [DF62W-EP2022PCA](#) [95000-106TRLF](#) [DF62W-2022SCA](#) [DF62W-EP2022PC](#) [2203348](#) [DF62W-2022SC](#) [1084018](#) [1029039](#) [1084017](#) [802-10-012-10-002000](#) [1112640](#) [1112639](#) [000-34000](#) [0009482033](#) [0009507031](#) [57102-S06-03LF](#) [57202-S52-04LF](#) [PCN6-15S-2.5E](#) [0039019024](#) [58102-G61-06LF](#) [582553-1](#) [0009508121](#) [0050291907](#) [018731A](#) [LY20-4P-DT1-P1E-BR](#) [02.125.8002.8](#) [60101931](#) [60598-1 \(Cut Strip\)](#) [M1625-3R/100](#) [61062-3](#) [61082-181009](#) [636-1427](#) [638009-1](#) [641938-9](#) [641991-4](#) [644168-1](#) [647662-1](#) [65039-019ELF](#) [65817-002LF](#) [65817-015LF](#) [65863-015LF](#) [66207-023LF](#) [67016-026LF](#) [67046-001LF](#) [67095-007LF](#) [68002-116](#) [68016-236H](#) [68648-049](#)