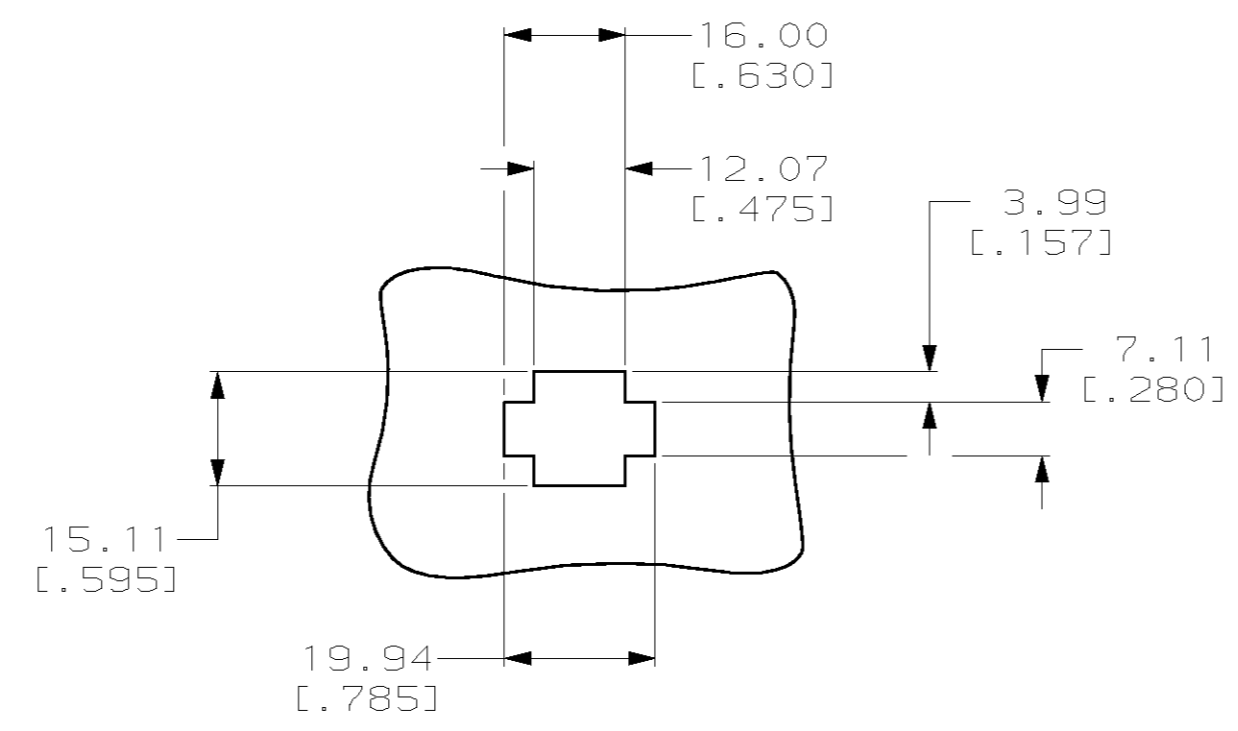
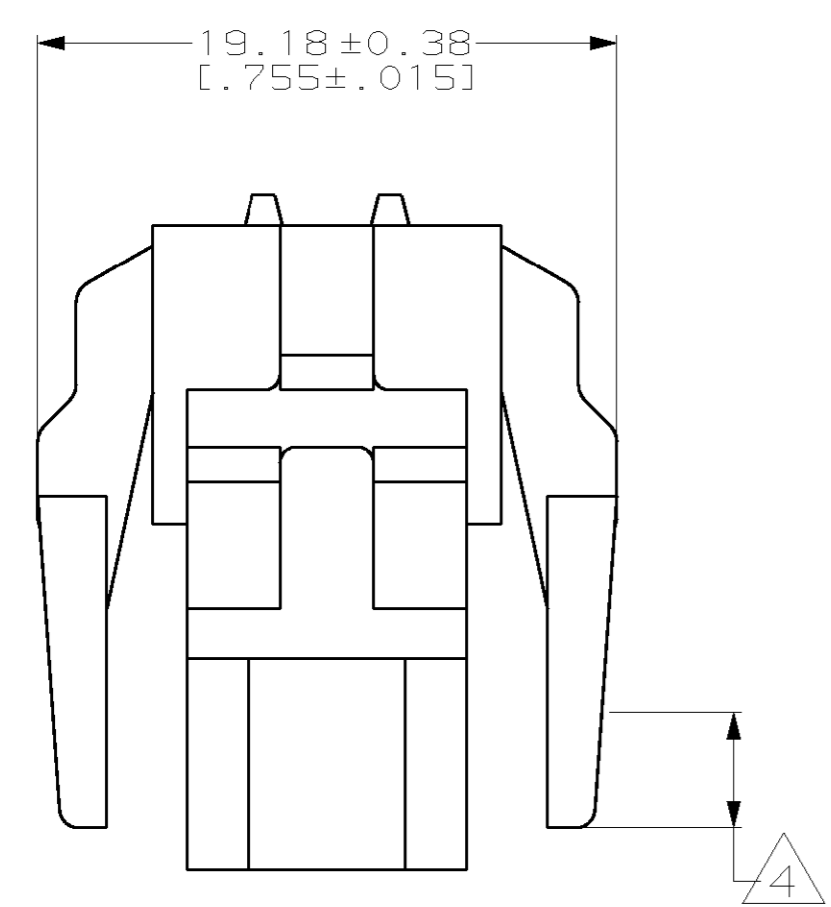
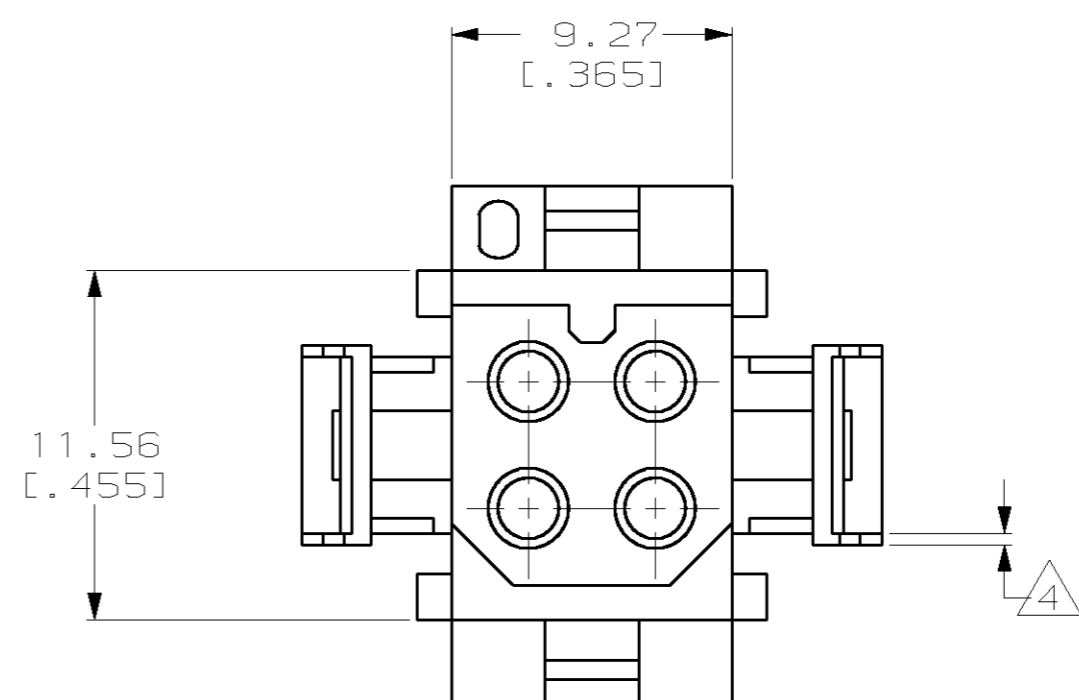
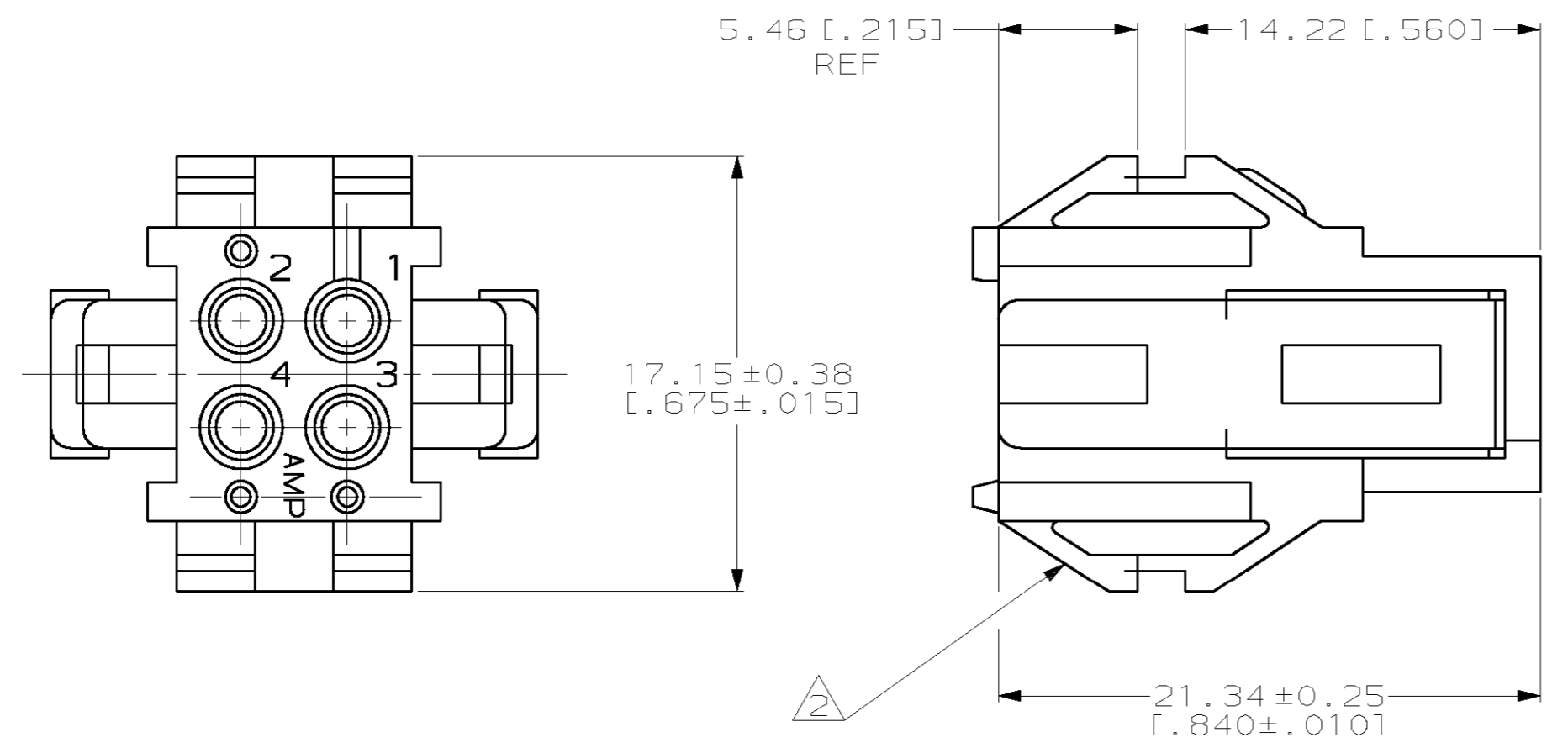


THIS DRAWING IS UNPUBLISHED. RELEASED FOR PUBLICATION .19  
 © COPYRIGHT 19 BY AMP INCORPORATED. ALL RIGHTS RESERVED.

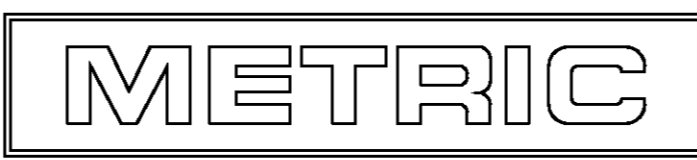
| LOC |     | DIST        |      | REVISIONS                   |           |    |    |
|-----|-----|-------------|------|-----------------------------|-----------|----|----|
| P   | LTR | DESCRIPTION | DATE | DWN                         | APVD      |    |    |
| CM  | 52  | F           |      | REVISED PER EC 063B-0104-99 | 05-OCT-99 | KW | KC |

- MATES WITH HOUSING 640509.
- UL LOGO AND CSA LOGO TO APPEAR ON EITHER LATCH SURFACE PER AMP SPEC 202-20, I.D. NO. 1-18838-3 AND 1-18839-3. FROST BACKGROUND OPTIONAL.
- DIMENSIONS IN BRACKETS ARE IN INCHES.
- NON-FILL PERMITTED UP TO 3.8[.15] FROM EDGE OF LATCH ARM ON THE 0.38[.015] THICK FLANGE, 4 PLC.



RECOMMENDED CUT OUT FOR 1.73[.068] MAX THICK PANEL  
 SCALE 1:1

1-640519-0  
 PART NUMBER



|  |  |              |            |          |   |                                     |
|--|--|--------------|------------|----------|---|-------------------------------------|
| THIS DRAWING IS A CONTROLLED DOCUMENT.   |  | DWN          | R. VESTAL  | 12-01-97 | AMP Incorporated<br>Harrisburg, PA 17105-3608 |                                     |
| DIMENSIONS: mm [INCHES]  |  | CHK          | R. SWING   | 12-01-97 |   |                                     |
| TOLERANCES UNLESS OTHERWISE SPECIFIED:   |  | APVD         | A. BEDDICK | 12-01-97 |   |                                     |
| 0 PLC ±-<br>1 PLC ±-<br>2 PLC ±0.13[.005]<br>3 PLC ±-<br>4 PLC ±-<br>ANGLES ±0°30' |  | PRODUCT SPEC | NAME       |          |   | HOUSING, PLUG<br>MRII<br>4 POSITION |
| MATERIAL NYLON, UL 94V-0, NATURAL (BRICK RED)                                      |  | FINISH       | -          |          | SIZE  | A2                                  |
| CUSTOMER DRAWING   |  | SCALE        | 4:1        |          | CAGE CODE                                     | 00779                               |
|  |  | DRAWING NO   | C-640519   |          | SHEET   | 1 OF 1                              |
|  |  | REV          | F          |          |   |                                     |

## X-ON Electronics

Largest Supplier of Electrical and Electronic Components

*Click to view similar products for [Headers & Wire Housings](#) category:*

*Click to view products by [TE Connectivity](#) manufacturer:*

Other Similar products are found below :

[892-18-020-10-001101](#) [58102-G61-06LF](#) [582553-1](#) [0009485154](#) [009176003701906](#) [0050291907](#) [LY20-4P-DT1-P1E-BR](#) [02.125.8002.8](#)  
[609-3404](#) [61062-3](#) [61082-181009](#) [622-3653LF](#) [63453-116](#) [636-1030](#) [636-1427](#) [636-3427](#) [636-4007](#) [641938-9](#) [641991-4](#) [644827-2](#) [65817-](#)  
[010LF](#) [65817-015LF](#) [65863-015LF](#) [66207-023LF](#) [67095-007LF](#) [67601157](#) [68645-018](#) [68648-049](#) [70.362.1628.0](#) [70-4210](#) [70-4226B](#) [70-](#)  
[4853B](#) [707-5020](#) [707-5028](#) [71.350.2428.0](#) [71918-208LF](#) [71961-016LF](#) [733-134](#) [733-162](#) [754199-000](#) [760-3052](#) [787-8014-00](#) [79531-3000](#)  
[FCN-360C032-B](#) [FCN-367T-T012/H](#) [FCN-723D010/2](#) [80.063.4001.1](#) [800-90-001-10-001000](#) [800-90-010-10-002000](#) [801-43-002-10-013000](#)