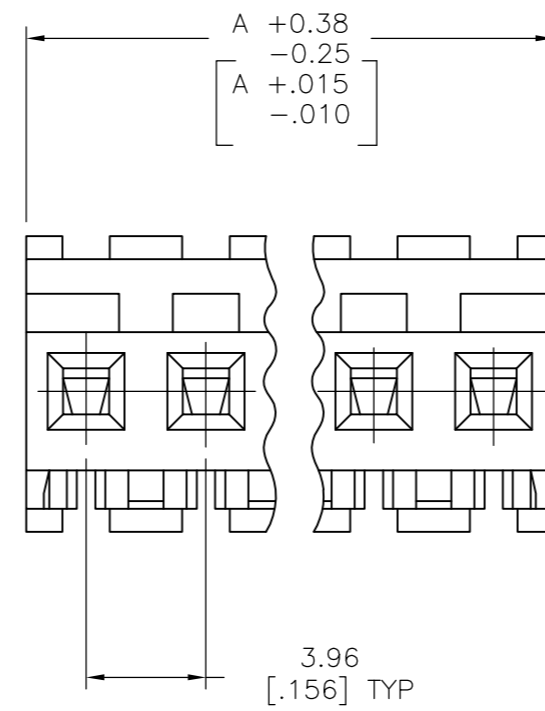
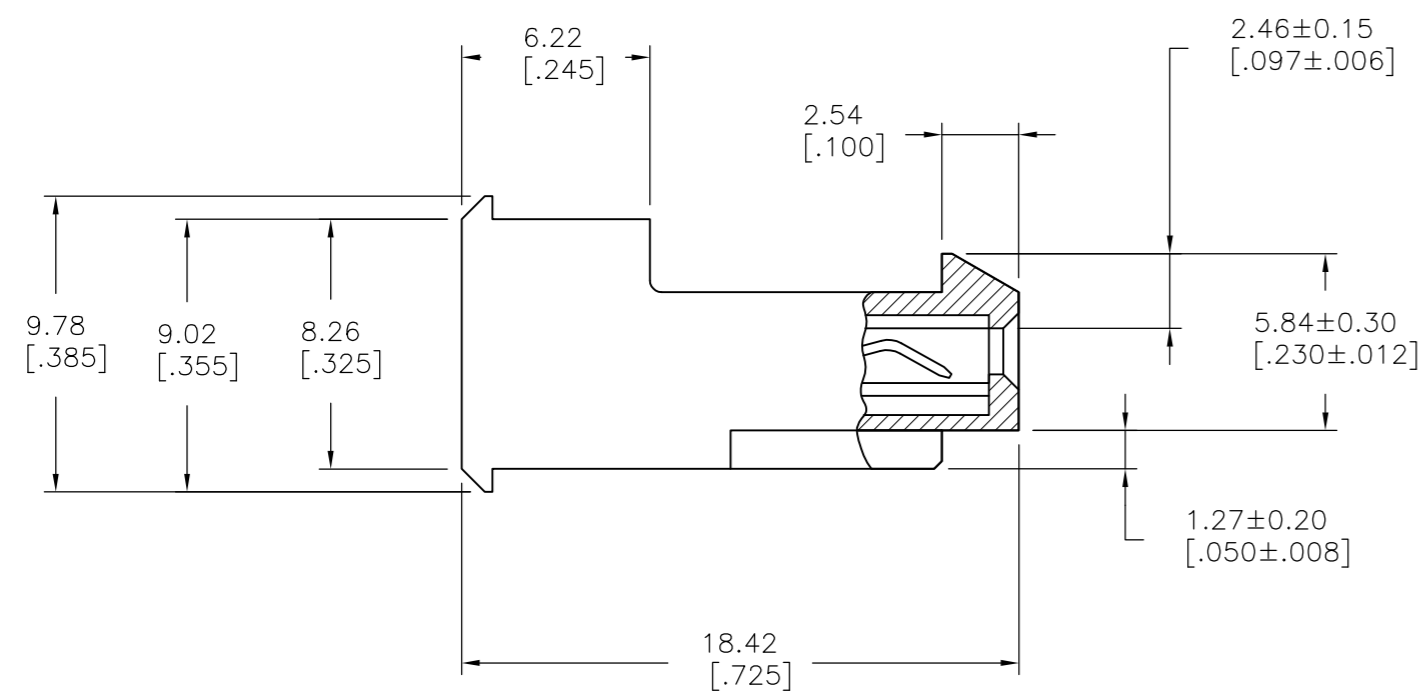
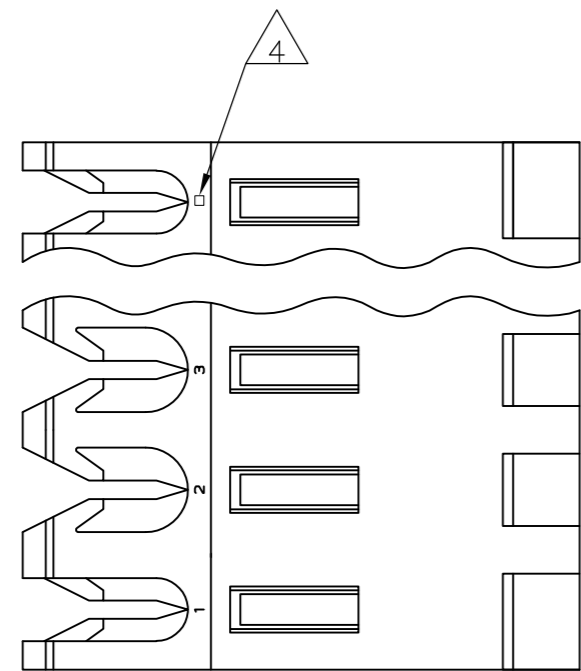


THIS DRAWING IS UNPUBLISHED. RELEASED FOR PUBLICATION
 © COPYRIGHT - By - TE CONNECTIVITY ALL RIGHTS RESERVED.

LOC	DIST	REVISIONS					
CM	54	P	LTR	DESCRIPTION	DATE	DWN	APVD
		S		REVISED PER ECR-20-000826	29MAY2020	PC	SW



95.10 [3.744]	24	5-640595-4
91.14 [3.588]	23	5-640595-3
87.17 [3.432]	22	5-640595-2
83.21 [3.276]	21	5-640595-1
79.25 [3.120]	20	5-640595-0
75.29 [2.964]	19	4-640595-9
71.32 [2.808]	18	4-640595-8
67.36 [2.652]	17	4-640595-7
63.40 [2.496]	16	4-640595-6
59.44 [2.340]	15	4-640595-5
55.47 [2.184]	14	4-640595-4
51.51 [2.028]	13	4-640595-3
47.55 [1.872]	12	4-640595-2
43.59 [1.716]	11	4-640595-1
39.62 [1.560]	10	4-640595-0
35.66 [1.404]	9	3-640595-9
31.70 [1.248]	8	3-640595-8
27.74 [1.092]	7	3-640595-7
23.77 [.936]	6	3-640595-6
19.81 [.780]	5	3-640595-5
15.85 [.624]	4	3-640595-4
11.89 [.468]	3	3-640595-3
7.92 [.312]	2	3-640595-2
95.10 [3.744]	24	2-640595-4
91.14 [3.588]	23	2-640595-3
87.17 [3.432]	22	2-640595-2
83.21 [3.276]	21	2-640595-1
79.25 [3.120]	20	2-640595-0
75.29 [2.964]	19	1-640595-9
71.32 [2.808]	18	1-640595-8
67.36 [2.652]	17	1-640595-7
63.40 [2.496]	16	1-640595-6
59.44 [2.340]	15	1-640595-5
55.47 [2.184]	14	1-640595-4
51.51 [2.028]	13	1-640595-3
47.55 [1.872]	12	1-640595-2
43.59 [1.716]	11	1-640595-1
39.62 [1.560]	10	1-640595-0
35.66 [1.404]	9	640595-9
31.70 [1.248]	8	640595-8
27.74 [1.092]	7	640595-7
23.77 [.936]	6	640595-6
19.81 [.780]	5	640595-5
15.85 [.624]	4	640595-4
11.89 [.468]	3	640595-3
7.92 [.312]	2	640595-2

- △ SUPERSEDED BY 5-640595-4
- △ SUPERSEDED BY 5-640595-3
- △ SUPERSEDED BY 5-640595-2
- △ SUPERSEDED BY 5-640595-1
- △ SUPERSEDED BY 5-640595-0
- △ SUPERSEDED BY 4-640595-9
- △ SUPERSEDED BY 4-640595-8
- △ SUPERSEDED BY 4-640595-7
- △ SUPERSEDED BY 4-640595-6
- △ SUPERSEDED BY 4-640595-5
- △ SUPERSEDED BY 4-640595-4
- △ SUPERSEDED BY 4-640595-3
- △ SUPERSEDED BY 4-640595-2
- △ SUPERSEDED BY 4-640595-1
- △ SUPERSEDED BY 4-640595-0
- △ SUPERSEDED BY 3-640595-9
- △ SUPERSEDED BY 3-640595-8
- △ SUPERSEDED BY 3-640595-7
- △ SUPERSEDED BY 3-640595-6
- △ SUPERSEDED BY 3-640595-5
- △ SUPERSEDED BY 3-640595-4
- △ SUPERSEDED BY 3-640595-3

- 1 MATERIAL: CONNECTOR - NYLON UL94V-2 (BLUE).
CONTACTS - 0.30[.012] THICK COPPER ALLOY (BRIGHT TIN-LEAD 0.00203[.000080] MIN. THICK FOR CONTACTS 640595-2 THRU 2-640595-4) (MATTE WHISKER MITIGATED TIN 0.00203[.000080] MIN THICKNESS OVER NICKEL UNDERPLATE FOR 3-640595-2 THRU 5-640595-4).
- 2 CONTACTS ACCEPT 26 AWG WIRE WITH 2.41[.095] MAX INSULATION DIAMETER.
- 3 CONTACTS MUST ACCEPT 1.14±0.03[.045±.001] SQUARE POST AND REMAIN LOCKED IN POSITION.
- 4 IDENTIFICATION NUMBER FOR LAST CIRCUIT MAY NOT APPEAR ON ALL ASSEMBLIES.
- 5 DIMENSIONS IN BRACKETS ARE IN INCHES.
- 6 HOUSING FEATURES ARE: FEED-THRU WITH LOCKING RAMP.
- 7 OBSOLETE PARTS: OBSOLETE CIS STREAMLINING PER D.RENAUD/D.SINISI

THIS DRAWING IS A CONTROLLED DOCUMENT.		DWN B. LEWIS 12FEB91		
DIMENSIONS: mm [INCHES]		CHK R. SWING 12FEB91		
TOLERANCES UNLESS OTHERWISE SPECIFIED:		APVD D. CLARK 19FEB91	NAME	
0 PLC ± -	1 PLC ± -	PRODUCT SPEC	MTA-156 CONNECTOR ASSEMBLY, 26 AWG, STANDARD	
2 PLC ± -	3 PLC ± 0.13 [.005]	APPLICATION SPEC	SIZE	CAGE CODE
4 PLC ± -	ANGLES ± -	114-1020	A2	00779
MATERIAL	FINISH	WEIGHT	DRAWING NO	RESTRICTED TO
1	1		C=640595	-
CUSTOMER DRAWING			SCALE	SHEET
			4:1	1 OF 1
			REV	S

X-ON Electronics

Largest Supplier of Electrical and Electronic Components

Click to view similar products for [Headers & Wire Housings](#) category:

Click to view products by [TE Connectivity](#) manufacturer:

Other Similar products are found below :

[95000-104TRLF](#) [10135584-644402LF](#) [DF62W-EP2022PCA](#) [95000-106TRLF](#) [DF62W-2022SCA](#) [DF62W-EP2022PC](#) [2203348](#) [DF62W-2022SC](#) [1084018](#) [1029039](#) [1084017](#) [802-10-012-10-002000](#) [1112640](#) [1112639](#) [000-34000](#) [0009482033](#) [0009507031](#) [57102-S06-03LF](#) [57202-S52-04LF](#) [PCN6-15S-2.5E](#) [0039019024](#) [58102-G61-06LF](#) [582553-1](#) [0009508121](#) [0050291907](#) [018731A](#) [LY20-4P-DT1-P1E-BR](#) [02.125.8002.8](#) [60101931](#) [60598-1 \(Cut Strip\)](#) [M1625-3R/100](#) [61062-3](#) [61082-181009](#) [636-1427](#) [638009-1](#) [641938-9](#) [641991-4](#) [644168-1](#) [647662-1](#) [65039-019ELF](#) [65817-002LF](#) [65817-015LF](#) [65863-015LF](#) [66207-023LF](#) [67016-026LF](#) [67046-001LF](#) [67095-007LF](#) [68002-116](#) [68016-236H](#) [68648-049](#)