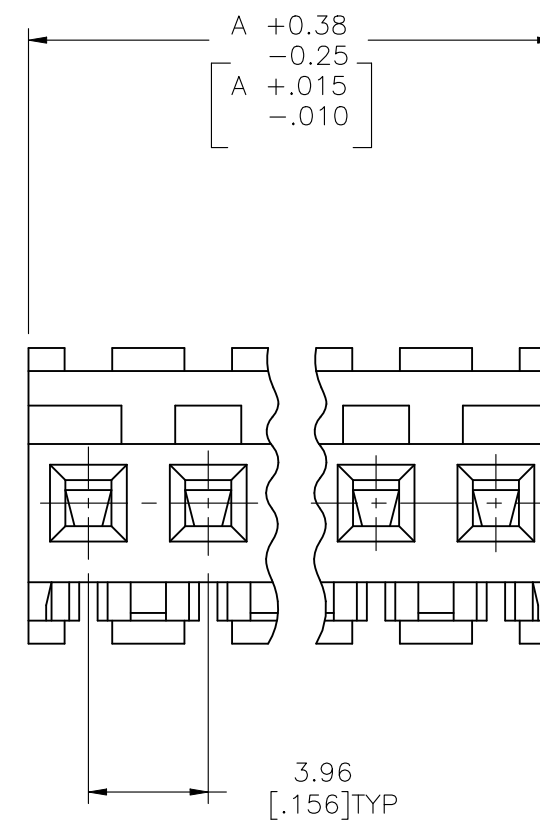
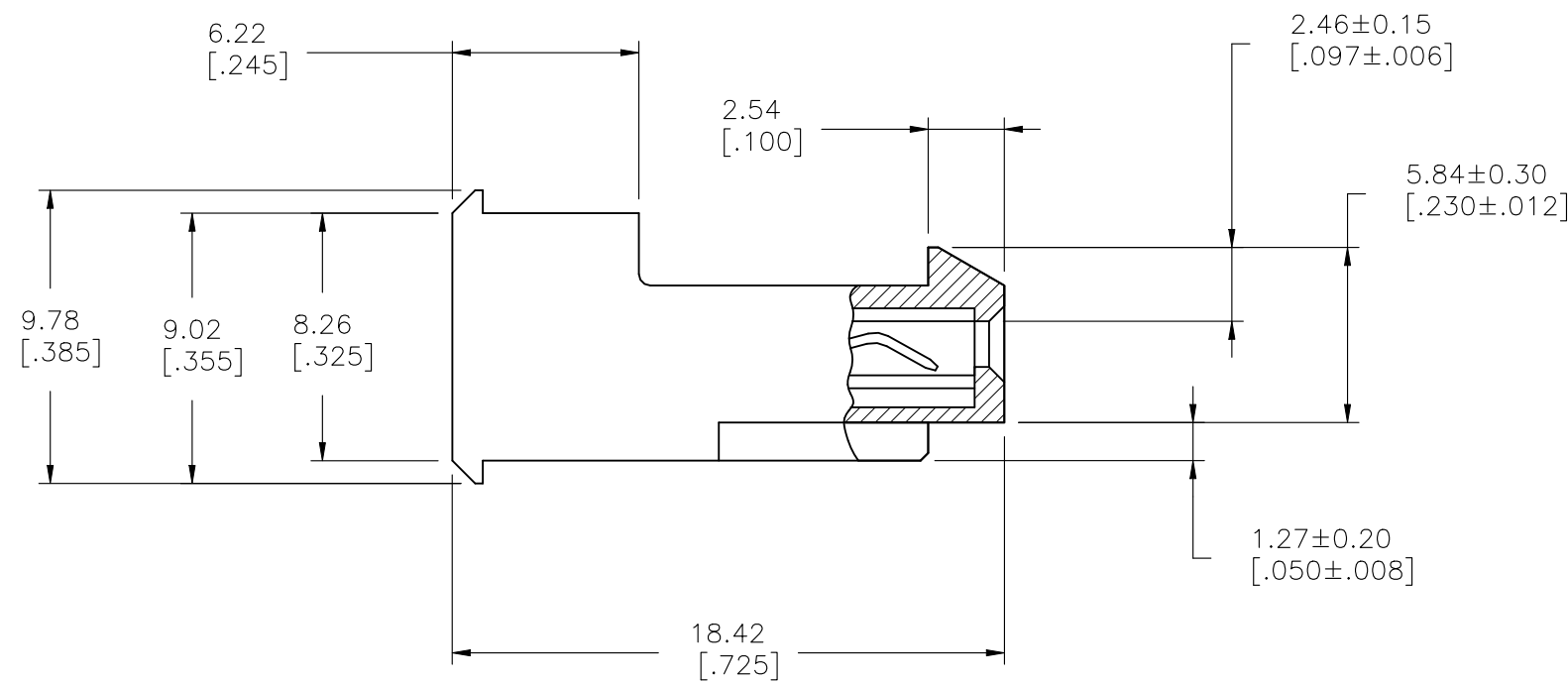
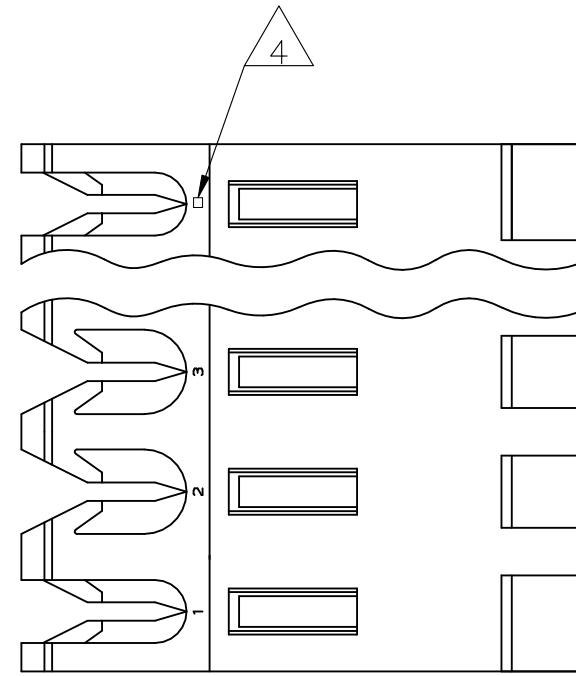


| REVISIONS | | | | | |
|-----------|-----|---------------------------|-----------|-----|------|
| P | LTR | DESCRIPTION | DATE | DWN | APVD |
| | U1 | REVISED PER ECR-21-100170 | 22JAN2021 | SS | VS |



| OBSOLETE | 95.10[3.744] | 24 | 5-640599-4 |
|----------|--------------|----|------------|
| | 91.13[3.588] | 23 | 5-640599-3 |
| | 87.17[3.432] | 22 | 5-640599-2 |
| | 83.21[3.276] | 21 | 5-640599-1 |
| | 79.25[3.120] | 20 | 5-640599-0 |
| | 75.29[2.964] | 19 | 4-640599-9 |
| | 71.32[2.808] | 18 | 4-640599-8 |
| | 67.36[2.652] | 17 | 4-640599-7 |
| | 63.40[2.496] | 16 | 4-640599-6 |
| | 59.44[2.340] | 15 | 4-640599-5 |
| | 55.47[2.184] | 14 | 4-640599-4 |
| | 51.51[2.028] | 13 | 4-640599-3 |
| | 47.55[1.872] | 12 | 4-640599-2 |
| | 43.59[1.716] | 11 | 4-640599-1 |
| | 39.62[1.560] | 10 | 4-640599-0 |
| | 35.66[1.404] | 9 | 3-640599-9 |
| | 31.70[1.248] | 8 | 3-640599-8 |
| | 27.74[1.092] | 7 | 3-640599-7 |
| | 23.77[.936] | 6 | 3-640599-6 |
| | 19.81[.780] | 5 | 3-640599-5 |
| | 15.85[.624] | 4 | 3-640599-4 |
| | 11.89[.468] | 3 | 3-640599-3 |
| | 7.92[.312] | 2 | 3-640599-2 |

| | | | | |
|---|--------------------------|--------------|----|------------|
| △ | SUPERSEDED BY 5-640599-4 | 95.10[3.744] | 24 | 2-640599-4 |
| △ | SUPERSEDED BY 5-640599-3 | 91.13[3.588] | 23 | 2-640599-3 |
| △ | SUPERSEDED BY 5-640599-2 | 87.17[3.432] | 22 | 2-640599-2 |
| △ | SUPERSEDED BY 5-640599-1 | 83.21[3.276] | 21 | 2-640599-1 |
| △ | SUPERSEDED BY 5-640599-0 | 79.25[3.120] | 20 | 2-640599-0 |
| △ | SUPERSEDED BY 4-640599-9 | 75.29[2.964] | 19 | 1-640599-9 |
| △ | SUPERSEDED BY 4-640599-8 | 71.32[2.808] | 18 | 1-640599-8 |
| △ | SUPERSEDED BY 4-640599-7 | 67.36[2.652] | 17 | 1-640599-7 |
| △ | SUPERSEDED BY 4-640599-6 | 63.40[2.496] | 16 | 1-640599-6 |
| △ | SUPERSEDED BY 4-640599-5 | 59.44[2.340] | 15 | 1-640599-5 |
| △ | SUPERSEDED BY 4-640599-4 | 55.47[2.184] | 14 | 1-640599-4 |
| △ | SUPERSEDED BY 4-640599-3 | 51.51[2.028] | 13 | 1-640599-3 |
| △ | SUPERSEDED BY 4-640599-2 | 47.55[1.872] | 12 | 1-640599-2 |
| △ | SUPERSEDED BY 4-640599-1 | 43.59[1.716] | 11 | 1-640599-1 |
| △ | SUPERSEDED BY 4-640599-0 | 39.62[1.560] | 10 | 1-640599-0 |
| △ | SUPERSEDED BY 3-640599-9 | 35.66[1.404] | 9 | 1-640599-9 |
| △ | SUPERSEDED BY 3-640599-8 | 31.70[1.248] | 8 | 1-640599-8 |
| △ | SUPERSEDED BY 3-640599-7 | 27.74[1.092] | 7 | 1-640599-7 |
| △ | SUPERSEDED BY 3-640599-6 | 23.77[.936] | 6 | 1-640599-6 |
| △ | SUPERSEDED BY 3-640599-5 | 19.81[.780] | 5 | 1-640599-5 |
| △ | SUPERSEDED BY 3-640599-4 | 15.85[.624] | 4 | 1-640599-4 |
| △ | SUPERSEDED BY 3-640599-3 | 11.89[.468] | 3 | 1-640599-3 |
| △ | SUPERSEDED BY 3-640599-2 | 7.92[.312] | 2 | 1-640599-2 |

- 1 MATERIAL: CONNECTOR - NYLON UL94-V2 (ORANGE).
CONTACTS - 0.30[.012] THICK COPPER ALLOY (BRIGHT TIN-LEAD 0.00203[.000080] MIN. THICK FOR CONTACTS 640599-2 THRU 2-640599-4) (MATTE WHISKER MITIGATED TIN 0.00203[.000080] MIN THICKNESS OVER NICKEL UNDERPLATE FOR 3-640599-2 THRU 5-640599-4).
- 2 CONTACTS ACCEPT 18 AWG WIRE WITH 2.41[.095] MAX INSULATION DIAMETER.
- 3 CONTACTS MUST ACCEPT 1.14±0.03[.045±.001] SQUARE POST AND REMAIN LOCKED IN POSITION.
- 4 IDENTIFICATION NUMBER FOR LAST CIRCUIT MAY NOT APPEAR ON ALL ASSEMBLIES.
- 5 DIMENSIONS IN BRACKETS ARE IN INCHES.
- 6 HOUSING FEATURES ARE: FEED-THRU WITH LOCKING RAMP.
- 7 OBSOLETE PARTS: OBSOLETE CIS STREAMLINING PER D.RENAUD/D.SINIS
- 8 OBSOLETE PARTS

| | | | | |
|---|--|---------------------------------|--|--------------------|
| THIS DRAWING IS A CONTROLLED DOCUMENT. | | DWN S.CARPENTER 09JUL2003 | TE Connectivity MTA-156 CONNECTOR ASSEMBLY, 18 AWG, STANDARD | |
| DIMENSIONS: mm [INCHES] | | CHK D BOSSI 09JUL2003 | | |
| TOLERANCES UNLESS OTHERWISE SPECIFIED: | | APVD D BOSSI 09JUL2003 | NAME | |
| 0 PLC ± - 1 PLC ± - 2 PLC ± - 3 PLC ± 0.13 [.005] 4 PLC ± - ANGLES ± - | | PRODUCT SPEC 108-1051 | RESTRICTED TO | |
| MATERIAL | | APPLICATION SPEC 114-1020 | SIZE A2 | CAGE CODE 00779 |
| FINISH | | WEIGHT 0.000000 | DRAWING NO C-640599 | SCALE 4:1 |
| | | CUSTOMER DRAWING | SHEET 1 OF 1 | REV U1 |

X-ON Electronics

Largest Supplier of Electrical and Electronic Components

Click to view similar products for [Headers & Wire Housings](#) category:

Click to view products by [TE Connectivity](#) manufacturer:

Other Similar products are found below :

[892-18-020-10-001101](#) [58102-G61-06LF](#) [582553-1](#) [0009485154](#) [009176003701906](#) [0050291907](#) [LY20-4P-DT1-P1E-BR](#) [02.125.8002.8](#)
[609-3404](#) [61062-3](#) [61082-181009](#) [622-3653LF](#) [63453-116](#) [636-1030](#) [636-1427](#) [636-3427](#) [636-4007](#) [641938-9](#) [641991-4](#) [644827-2](#) [65817-](#)
[010LF](#) [65817-015LF](#) [65863-015LF](#) [66207-023LF](#) [67095-007LF](#) [67601157](#) [68645-018](#) [68648-049](#) [70.362.1628.0](#) [70-4210](#) [70-4226B](#) [70-](#)
[4853B](#) [707-5020](#) [707-5028](#) [71.350.2428.0](#) [71918-208LF](#) [71961-016LF](#) [733-134](#) [733-162](#) [754199-000](#) [760-3052](#) [787-8014-00](#) [79531-3000](#)
[FCN-360C032-B](#) [FCN-367T-T012/H](#) [FCN-723D010/2](#) [80.063.4001.1](#) [800-90-001-10-001000](#) [800-90-010-10-002000](#) [801-43-002-10-013000](#)