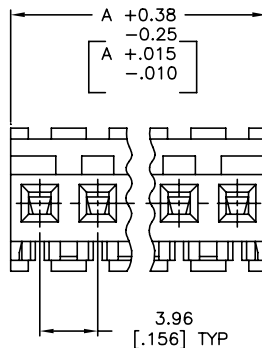
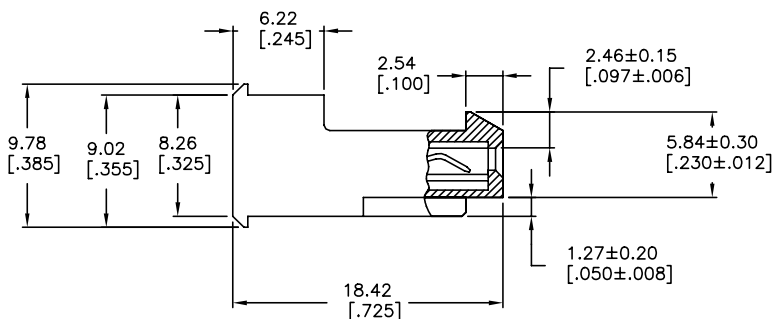
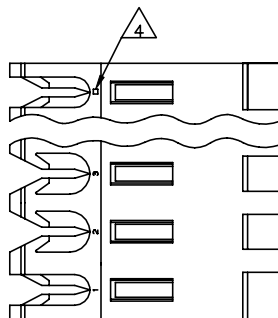


THIS DRAWING IS UNPUBLISHED. RELEASED FOR PUBLICATION  
 © COPYRIGHT - By - TE CONNECTIVITY ALL RIGHTS RESERVED.

LOC		DIST		REVISIONS				
P	LTR	REVISED	PER	DESCRIPTION	DATE	OWN	APVD	
CM	54	V		ECR-20-000820	27MAY2020	PC	SW	



REV	DATE	DESCRIPTION	NO OF CIRCUITS	PART NO
95.10	[3.744]	24	5-640600-4	
91.14	[3.588]	23	5-640600-3	
87.17	[3.432]	22	5-640600-2	
83.21	[3.276]	21	5-640600-1	
79.25	[3.120]	20	5-640600-0	
75.29	[2.964]	19	4-640600-9	
71.32	[2.808]	18	4-640600-8	
67.36	[2.652]	17	4-640600-7	
63.40	[2.496]	16	4-640600-6	
59.44	[2.340]	15	4-640600-5	
55.47	[2.184]	14	4-640600-4	
51.51	[2.028]	13	4-640600-3	
47.55	[1.872]	12	4-640600-2	
43.59	[1.716]	11	4-640600-1	
39.62	[1.560]	10	4-640600-0	
35.66	[1.404]	9	3-640600-9	
31.70	[1.248]	8	3-640600-8	
27.74	[1.092]	7	3-640600-7	
23.77	[.936]	6	3-640600-6	
19.81	[.780]	5	3-640600-5	
15.85	[.624]	4	3-640600-4	
11.89	[.468]	3	3-640600-3	
7.92	[.312]	2	3-640600-2	
95.10	[3.744]	24	<del>2-640600-4</del>	
91.14	[3.588]	23	<del>2-640600-3</del>	
87.17	[3.432]	22	<del>2-640600-2</del>	
83.21	[3.276]	21	<del>2-640600-1</del>	
79.25	[3.120]	20	<del>2-640600-0</del>	
75.29	[2.964]	19	<del>1-640600-9</del>	
71.32	[2.808]	18	<del>1-640600-8</del>	
67.36	[2.652]	17	<del>1-640600-7</del>	
63.40	[2.496]	16	<del>1-640600-6</del>	
59.44	[2.340]	15	<del>1-640600-5</del>	
55.47	[2.184]	14	<del>1-640600-4</del>	
51.51	[2.028]	13	<del>1-640600-3</del>	
47.55	[1.872]	12	<del>1-640600-2</del>	
43.59	[1.716]	11	<del>1-640600-1</del>	
39.62	[1.560]	10	<del>1-640600-0</del>	
35.66	[1.404]	9	<del>640600-9</del>	
31.70	[1.248]	8	<del>640600-8</del>	
27.74	[1.092]	7	<del>640600-7</del>	
23.77	[.936]	6	<del>640600-6</del>	
19.81	[.780]	5	<del>640600-5</del>	
15.85	[.624]	4	<del>640600-4</del>	
11.89	[.468]	3	<del>640600-3</del>	
7.92	[.312]	2	<del>640600-2</del>	

△ SUPERSEDED  
 △ SUPERSEDED  
 △ SUPERSEDED  
 △ SUPERSEDED  
 △ SUPERSEDED

- △ MATERIAL: CONNECTOR - NYLON UL94V-2 (YELLOW). CONTACTS - 0.30[.012] THICK COPPER ALLOY (BRIGHT TIN-LEAD 0.00203[.000080] MIN. THICK FOR CONTACTS 640600-2 THRU 2-640600-4) (MATTE WHISKER MITIGATED TIN 0.00203[.000080] MIN THICKNESS OVER NICKEL UNDERPLATE FOR 3-640600-2 THRU 5-640600-4).
- 2 CONTACTS ACCEPT 20 AWG WIRE WITH 2.41[.095] MAX INSULATION DIAMETER.
- 3 CONTACTS MUST ACCEPT 1.14±0.03[.045±.001] SQUARE POST AND REMAIN LOCKED IN POSITION.
- △ IDENTIFICATION NUMBER FOR LAST CIRCUIT MAY NOT APPEAR ON ALL ASSEMBLIES.
- 5 DIMENSIONS IN BRACKETS ARE IN INCHES.
- 6 HOUSING FEATURES ARE: FEED-THRU WITH LOCKING RAMP.
- △ OBSOLETE PARTS: OBSOLETE CIS STREAMLINING PER D.RENAUD/D.SINISI
- △ OBSOLETE PARTS

THIS DRAWING IS A CONTROLLED DOCUMENT.		DWG: B. LEWIS 12FEB91	TE Connectivity MTA-156 CONNECTOR ASSEMBLY, 20 AWG, STANDARD	
DIMENSIONS: mm [INCHES]		CHK: R. SWING 12FEB91		
TOLERANCES UNLESS OTHERWISE SPECIFIED:		APVD: D. CLARK 19FEB91	NAME	
0 PLC ± -	1 PLC ± -	PRODUCT SPEC		
2 PLC ± -	3 PLC ± 0.13 [.005]	108-1051		
4 PLC ± -	ANGLES ± -	APPLICATION SPEC		
MATERIAL		SIZE: A2	CAGE CODE: 00779	DRAWING NO: C=640600
FINISH		WEIGHT		RESTRICTED TO
△		CUSTOMER DRAWING		SCALE: 4:1 SHEET: 1 of 1 REV: V

## X-ON Electronics

Largest Supplier of Electrical and Electronic Components

*Click to view similar products for [Headers & Wire Housings](#) category:*

*Click to view products by [TE Connectivity](#) manufacturer:*

Other Similar products are found below :

[892-18-020-10-001101](#) [58102-G61-06LF](#) [582553-1](#) [0009485154](#) [009176003701906](#) [0050291907](#) [LY20-4P-DT1-P1E-BR](#) [02.125.8002.8](#)  
[609-3404](#) [61062-3](#) [61082-181009](#) [622-3653LF](#) [63453-116](#) [636-1030](#) [636-1427](#) [636-3427](#) [636-4007](#) [641938-9](#) [641991-4](#) [644827-2](#) [65817-010LF](#) [65817-015LF](#) [65863-015LF](#) [66207-023LF](#) [67095-007LF](#) [67601157](#) [68645-018](#) [68648-049](#) [70.362.1628.0](#) [70-4210](#) [70-4226B](#) [70-4853B](#) [707-5020](#) [707-5028](#) [71.350.2428.0](#) [71918-208LF](#) [71961-016LF](#) [733-134](#) [733-162](#) [754199-000](#) [760-3052](#) [787-8014-00](#) [79531-3000](#)  
[FCN-360C032-B](#) [FCN-367T-T012/H](#) [FCN-723D010/2](#) [80.063.4001.1](#) [800-90-001-10-001000](#) [800-90-010-10-002000](#) [801-43-002-10-013000](#)