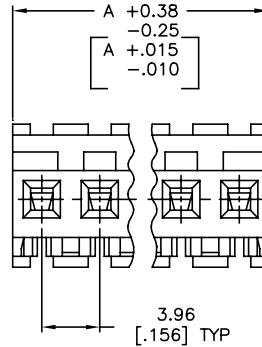
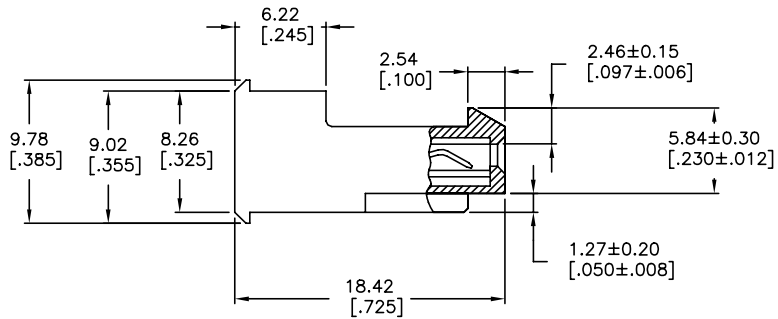
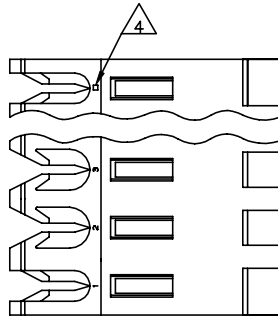


THIS DRAWING IS UNPUBLISHED. RELEASED FOR PUBLICATION  
 © COPYRIGHT - By - TE CONNECTIVITY ALL RIGHTS RESERVED.

LOC	DIST	REVISIONS				
P	LTR	DESCRIPTION	DATE	DN	APD	
CM	54	V	REVISED PER ECR-20-000820	27MAY2020	PC SW	



REV	DATE	DESCRIPTION	NO OF CIRCUITS	PART NO
95.10	[3.744]	24	5-640600-4	
91.14	[3.588]	23	5-640600-3	
87.17	[3.432]	22	5-640600-2	
83.21	[3.276]	21	5-640600-1	
79.25	[3.120]	20	5-640600-0	
75.29	[2.964]	19	4-640600-9	
71.32	[2.808]	18	4-640600-8	
67.36	[2.652]	17	4-640600-7	
63.40	[2.496]	16	4-640600-6	
59.44	[2.340]	15	4-640600-5	
55.47	[2.184]	14	4-640600-4	
51.51	[2.028]	13	4-640600-3	
47.55	[1.872]	12	4-640600-2	
43.59	[1.716]	11	4-640600-1	
39.62	[1.560]	10	4-640600-0	
35.66	[1.404]	9	3-640600-9	
31.70	[1.248]	8	3-640600-8	
27.74	[1.092]	7	3-640600-7	
23.77	[.936]	6	3-640600-6	
19.81	[.780]	5	3-640600-5	
15.85	[.624]	4	3-640600-4	
11.89	[.468]	3	3-640600-3	
7.92	[.312]	2	3-640600-2	
95.10	[3.744]	24	<del>2-640600-4</del>	
91.14	[3.588]	23	<del>2-640600-3</del>	
87.17	[3.432]	22	<del>2-640600-2</del>	
83.21	[3.276]	21	<del>2-640600-1</del>	
79.25	[3.120]	20	<del>2-640600-0</del>	
75.29	[2.964]	19	<del>1-640600-9</del>	
71.32	[2.808]	18	<del>1-640600-8</del>	
67.36	[2.652]	17	<del>1-640600-7</del>	
63.40	[2.496]	16	<del>1-640600-6</del>	
59.44	[2.340]	15	<del>1-640600-5</del>	
55.47	[2.184]	14	<del>1-640600-4</del>	
51.51	[2.028]	13	<del>1-640600-3</del>	
47.55	[1.872]	12	<del>1-640600-2</del>	
43.59	[1.716]	11	<del>1-640600-1</del>	
39.62	[1.560]	10	<del>1-640600-0</del>	
35.66	[1.404]	9	<del>640600-9</del>	
31.70	[1.248]	8	<del>640600-8</del>	
27.74	[1.092]	7	<del>640600-7</del>	
23.77	[.936]	6	<del>640600-6</del>	
19.81	[.780]	5	<del>640600-5</del>	
15.85	[.624]	4	<del>640600-4</del>	
11.89	[.468]	3	<del>640600-3</del>	
7.92	[.312]	2	<del>640600-2</del>	

- △ MATERIAL: CONNECTOR - NYLON UL94V-2 (YELLOW).  
CONTACTS - 0.30[.012] THICK COPPER ALLOY (BRIGHT TIN-LEAD 0.00203[.000080] MIN. THICK FOR CONTACTS 640600-2 THRU 2-640600-4) (MATTE WHISKER MITIGATED TIN 0.00203[.000080] MIN THICKNESS OVER NICKEL UNDERPLATE FOR 3-640600-2 THRU 5-640600-4).
- 2 CONTACTS ACCEPT 20 AWG WIRE WITH 2.41[.095] MAX INSULATION DIAMETER.
- 3 CONTACTS MUST ACCEPT 1.14±0.03[.045±.001] SQUARE POST AND REMAIN LOCKED IN POSITION.
- △ IDENTIFICATION NUMBER FOR LAST CIRCUIT MAY NOT APPEAR ON ALL ASSEMBLIES.
- 5 DIMENSIONS IN BRACKETS ARE IN INCHES.
- 6 HOUSING FEATURES ARE: FEED-THRU WITH LOCKING RAMP.
- △ OBSOLETE PARTS: OBSOLETE CIS STREAMLINING PER D.RENAUD/D.SINISI
- △ OBSOLETE PARTS

SUPERSEDED △	95.10	[3.744]	24	<del>2-640600-4</del>
	91.14	[3.588]	23	<del>2-640600-3</del>
	87.17	[3.432]	22	<del>2-640600-2</del>
	83.21	[3.276]	21	<del>2-640600-1</del>
	79.25	[3.120]	20	<del>2-640600-0</del>
	75.29	[2.964]	19	<del>1-640600-9</del>
	71.32	[2.808]	18	<del>1-640600-8</del>
	67.36	[2.652]	17	<del>1-640600-7</del>
	63.40	[2.496]	16	<del>1-640600-6</del>
	59.44	[2.340]	15	<del>1-640600-5</del>
△ SUPERSEDED	55.47	[2.184]	14	<del>1-640600-4</del>
△ SUPERSEDED	51.51	[2.028]	13	<del>1-640600-3</del>
△ SUPERSEDED	47.55	[1.872]	12	<del>1-640600-2</del>
△ SUPERSEDED	43.59	[1.716]	11	<del>1-640600-1</del>
△ SUPERSEDED	39.62	[1.560]	10	<del>1-640600-0</del>
△ SUPERSEDED	35.66	[1.404]	9	<del>640600-9</del>
△ SUPERSEDED	31.70	[1.248]	8	<del>640600-8</del>
△ SUPERSEDED	27.74	[1.092]	7	<del>640600-7</del>
△ SUPERSEDED	23.77	[.936]	6	<del>640600-6</del>
△ SUPERSEDED	19.81	[.780]	5	<del>640600-5</del>
△ SUPERSEDED	15.85	[.624]	4	<del>640600-4</del>
△ SUPERSEDED	11.89	[.468]	3	<del>640600-3</del>
△ SUPERSEDED	7.92	[.312]	2	<del>640600-2</del>

THIS DRAWING IS A CONTROLLED DOCUMENT. DWN: B. LEWIS 12FEB91  
 CHK: R. SWING 12FEB91  
 APD: D. CLARK 19FEB91

TE Connectivity  
 MTA-156 CONNECTOR ASSEMBLY, 20 AWG, STANDARD

DIMENSIONS: mm [INCHES]	TOLERANCES UNLESS OTHERWISE SPECIFIED:	0 PLC ± -	1 PLC ± -	2 PLC ± -	3 PLC ± 0.13 [0.005]	4 PLC ± -	
FINISH		ANGLES		WEIGHT		RESTRICTED TO	
MATERIAL		FINISH		WEIGHT		RESTRICTED TO	

SIZE: A2 CAGE CODE: 00779 DRAWING NO: 114-1020  
 SCALE: 4:1 SHEET: 1 of 1 REV: V

## X-ON Electronics

Largest Supplier of Electrical and Electronic Components

*Click to view similar products for [Headers & Wire Housings](#) category:*

*Click to view products by [TE Connectivity](#) manufacturer:*

Other Similar products are found below :

[95000-104TRLF](#) [10135584-644402LF](#) [DF62W-EP2022PCA](#) [95000-106TRLF](#) [DF62W-2022SCA](#) [DF62W-EP2022PC](#) [2203348](#) [DF62W-2022SC](#) [1084018](#) [1029039](#) [1084017](#) [802-10-012-10-002000](#) [1112640](#) [1112639](#) [000-34000](#) [0009482033](#) [0009507031](#) [57102-S06-03LF](#) [57202-S52-04LF](#) [PCN6-15S-2.5E](#) [0039019024](#) [58102-G61-06LF](#) [582553-1](#) [0009508121](#) [0050291907](#) [018731A](#) [LY20-4P-DT1-P1E-BR](#) [02.125.8002.8](#) [60101931](#) [60598-1 \(Cut Strip\)](#) [M1625-3R/100](#) [61062-3](#) [61082-181009](#) [636-1427](#) [638009-1](#) [641938-9](#) [641991-4](#) [644168-1](#) [647662-1](#) [65039-019ELF](#) [65817-002LF](#) [65817-015LF](#) [65863-015LF](#) [66207-023LF](#) [67016-026LF](#) [67046-001LF](#) [67095-007LF](#) [68002-116](#) [68016-236H](#) [68648-049](#)