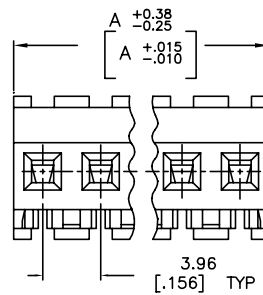
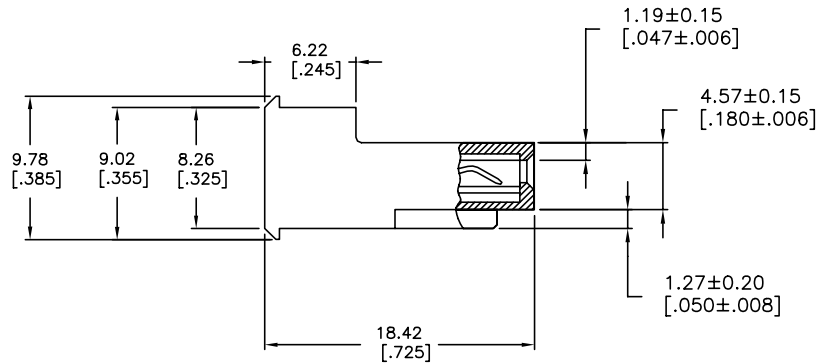
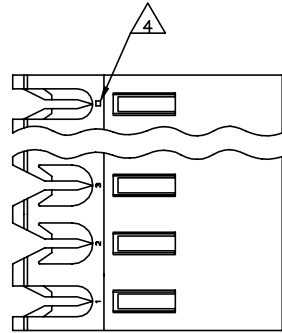


THIS DRAWING IS UNPUBLISHED. RELEASED FOR PUBLICATION
 © COPYRIGHT - By - TE CONNECTIVITY ALL RIGHTS RESERVED.

LOC		DIST		REVISIONS				
P	LT/R	DATE	DNM	APVD				
CM	54							
W	REVISED PER	ECR-20-000822	27MAY2020	PC	SW			



DIM A	NO OF CIRCUITS	PART NO
95.10 [3.744]	24	5-640606-4
91.14 [3.588]	23	5-640606-3
87.17 [3.432]	22	5-640606-2
83.21 [3.276]	21	5-640606-1
79.25 [3.120]	20	5-640606-0
75.29 [2.964]	19	4-640606-9
71.32 [2.808]	18	4-640606-8
67.36 [2.652]	17	4-640606-7
63.40 [2.496]	16	4-640606-6
59.44 [2.340]	15	4-640606-5
55.47 [2.184]	14	4-640606-4
51.51 [2.028]	13	4-640606-3
47.55 [1.872]	12	4-640606-2
43.59 [1.716]	11	4-640606-1
39.62 [1.560]	10	4-640606-0
35.66 [1.404]	9	3-640606-9
31.70 [1.248]	8	3-640606-8
27.74 [1.092]	7	3-640606-7
23.77 [.936]	6	3-640606-6
19.81 [.780]	5	3-640606-5
15.85 [.624]	4	3-640606-4
11.89 [.468]	3	3-640606-3
7.92 [.312]	2	3-640606-2
95.10 [3.744]	24	2-640606-4
91.14 [3.588]	23	2-640606-3
87.17 [3.432]	22	2-640606-2
83.21 [3.276]	21	2-640606-1
79.25 [3.120]	20	2-640606-0
75.29 [2.964]	19	1-640606-9
71.32 [2.808]	18	1-640606-8
67.36 [2.652]	17	1-640606-7
63.40 [2.496]	16	1-640606-6
59.44 [2.340]	15	1-640606-5
55.47 [2.184]	14	1-640606-4
51.51 [2.028]	13	1-640606-3
47.55 [1.872]	12	1-640606-2
43.59 [1.716]	11	1-640606-1
39.62 [1.560]	10	1-640606-0
35.66 [1.404]	9	640606-9
31.70 [1.248]	8	640606-8
27.74 [1.092]	7	640606-7
23.77 [.936]	6	640606-6
19.81 [.780]	5	640606-5
15.85 [.624]	4	640606-4
11.89 [.468]	3	640606-3
7.92 [.312]	2	640606-2

- △ MATERIAL: CONNECTOR - NYLON UL94V-2 (RED).
 CONTACTS - 0.30[.012] THICK COPPER ALLOY
 (BRIGHT TIN-LEAD 0.00203[.000080] MIN. THICK
 FOR CONTACTS 640606-2 THRU 2-640606-4)
 (MATTE WHISKER MITIGATED TIN 0.00203[.000080] MIN
 THICKNESS OVER NICKEL UNDERPLATE FOR
 3-640606-2 THRU 5-640606-4).
- 2 CONTACTS ACCEPT 22 AWG WIRE WITH 2.41[.095] MAX INSULATION DIAMETER.
- 3 CONTACTS MUST ACCEPT 1.14±0.03[.045±.001] SQUARE POST AND REMAIN LOCKED IN POSITION.
- △ IDENTIFICATION NUMBER FOR LAST CIRCUIT MAY NOT APPEAR ON ALL ASSEMBLIES.
- 5 DIMENSIONS IN BRACKETS ARE IN INCHES.
- 6 HOUSING FEATURES ARE: FEED-THRU WITHOUT LOCKING RAMP.
- △ OBSOLETE PARTS: OBSOLETE CIS STREAMLINING PER D.RENAUD/D.SINISI
- △ OBSOLETE PARTS

SUPERSEDED △	95.10 [3.744]	24	2-640606-4
	91.14 [3.588]	23	2-640606-3
SUPERSEDED △	87.17 [3.432]	22	2-640606-2
	83.21 [3.276]	21	2-640606-1
SUPERSEDED △	79.25 [3.120]	20	2-640606-0
	75.29 [2.964]	19	1-640606-9
SUPERSEDED △	71.32 [2.808]	18	1-640606-8
	67.36 [2.652]	17	1-640606-7
SUPERSEDED △	63.40 [2.496]	16	1-640606-6
	59.44 [2.340]	15	1-640606-5
SUPERSEDED △	55.47 [2.184]	14	1-640606-4
	51.51 [2.028]	13	1-640606-3
SUPERSEDED △	47.55 [1.872]	12	1-640606-2
	43.59 [1.716]	11	1-640606-1
SUPERSEDED △	39.62 [1.560]	10	1-640606-0
	35.66 [1.404]	9	640606-9
SUPERSEDED △	31.70 [1.248]	8	640606-8
	27.74 [1.092]	7	640606-7
SUPERSEDED △	23.77 [.936]	6	640606-6
	19.81 [.780]	5	640606-5
SUPERSEDED △	15.85 [.624]	4	640606-4
	11.89 [.468]	3	640606-3
SUPERSEDED △	7.92 [.312]	2	640606-2

THIS DRAWING IS A CONTROLLED DOCUMENT. DNM: B. LEWIS 12FEB91
 CHK: R. SWING 12FEB91
 APVD: D. CLARK 19FEB91 NAME: MTA-156 CONNECTOR ASSEMBLY, 22 AWG, STANDARD

DIMENSIONS: mm [INCHES]	TOLERANCES UNLESS OTHERWISE SPECIFIED:	SIZE: A2	CAGE CODE: W	DRAWING NO: C=640606	RESTRICTED TO: -
0 PLC ± -	1 PLC ± -	WEIGHT: -	SCALE: 4:1	SHEET: 1 of 1	REV: W
2 PLC ± -	3 PLC ± 0.13 [0.005]	CUSTOMER DRAWING			
4 PLC ± -	ANGLES ± -				

X-ON Electronics

Largest Supplier of Electrical and Electronic Components

Click to view similar products for [Headers & Wire Housings](#) category:

Click to view products by [TE Connectivity](#) manufacturer:

Other Similar products are found below :

[892-18-020-10-001101](#) [58102-G61-06LF](#) [582553-1](#) [0009485154](#) [009176003701906](#) [0050291907](#) [LY20-4P-DT1-P1E-BR](#) [02.125.8002.8](#)
[609-3404](#) [61062-3](#) [61082-181009](#) [622-3653LF](#) [63453-116](#) [636-1030](#) [636-1427](#) [636-3427](#) [636-4007](#) [641938-9](#) [641991-4](#) [644827-2](#) [65817-](#)
[010LF](#) [65817-015LF](#) [65863-015LF](#) [66207-023LF](#) [67095-007LF](#) [67601157](#) [68645-018](#) [68648-049](#) [70.362.1628.0](#) [70-4210](#) [70-4226B](#) [70-](#)
[4853B](#) [707-5020](#) [707-5028](#) [71.350.2428.0](#) [71918-208LF](#) [71961-016LF](#) [733-134](#) [733-162](#) [754199-000](#) [760-3052](#) [787-8014-00](#) [79531-3000](#)
[FCN-360C032-B](#) [FCN-367T-T012/H](#) [FCN-723D010/2](#) [80.063.4001.1](#) [800-90-001-10-001000](#) [800-90-010-10-002000](#) [801-43-002-10-013000](#)