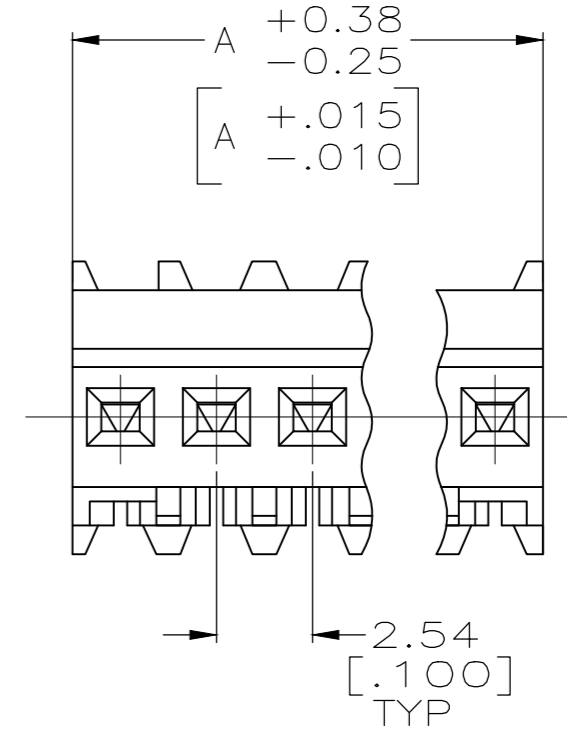
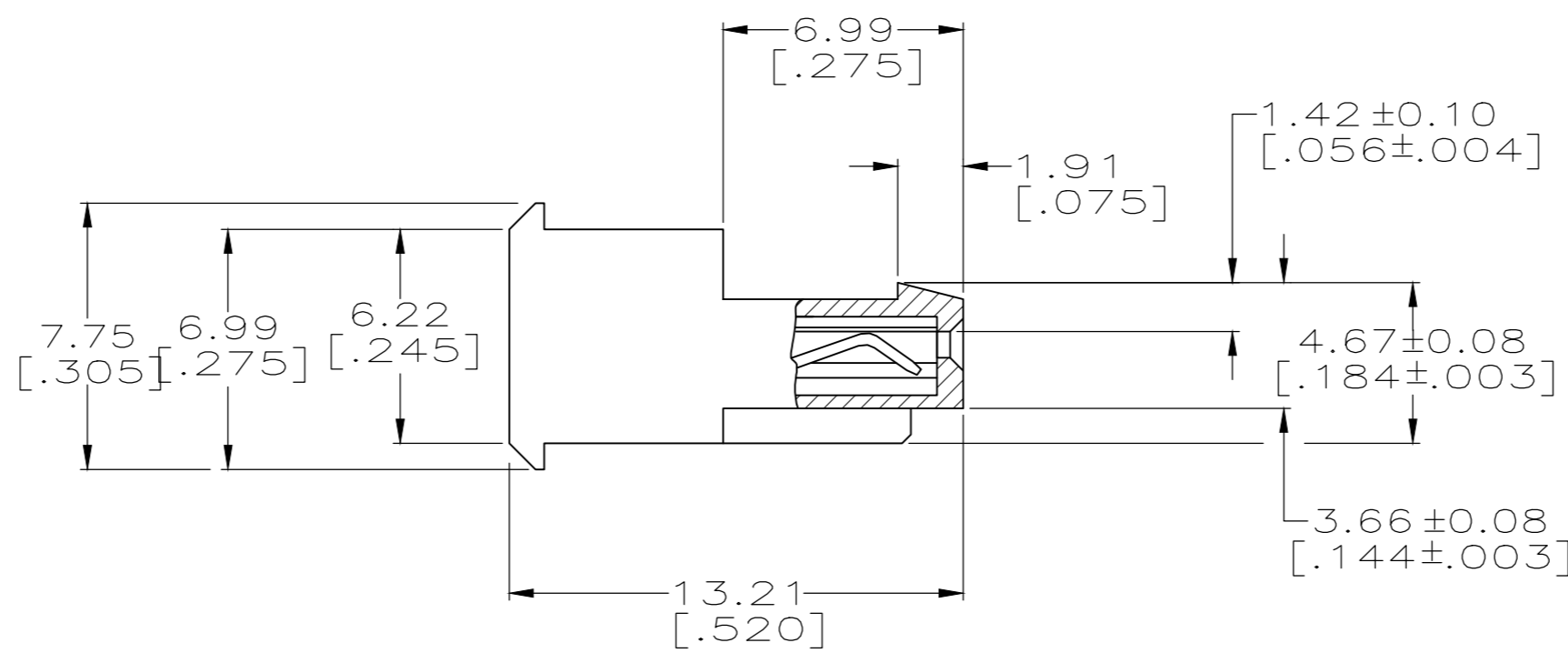
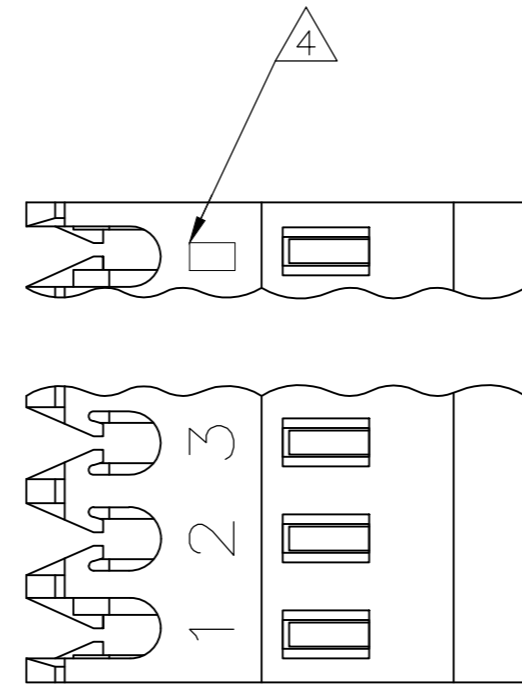


THIS DRAWING IS UNPUBLISHED. RELEASED FOR PUBLICATION
 © COPYRIGHT - By - ALL RIGHTS RESERVED.

| LOC | | DIST | | REVISIONS | | | |
|-----|----|------|-----|---------------------------|-----------|-----|------|
| CM | 00 | P | LTR | DESCRIPTION | DATE | DWN | APVD |
| | | W | | REVISED PER ECR-20-000721 | 04MAR2020 | PC | SW |

| | | | |
|-----|--------------|----|------------|
| YES | 71.12[2.800] | 28 | 5-640621-8 |
| YES | 68.58[2.700] | 27 | 5-640621-7 |
| YES | 66.04[2.600] | 26 | 5-640621-6 |
| YES | 63.50[2.500] | 25 | 5-640621-5 |
| YES | 60.96[2.400] | 24 | 5-640621-4 |
| YES | 58.42[2.300] | 23 | 5-640621-3 |
| YES | 55.88[2.200] | 22 | 5-640621-2 |
| YES | 53.34[2.100] | 21 | 5-640621-1 |
| YES | 50.80[2.000] | 20 | 5-640621-0 |
| YES | 48.26[1.900] | 19 | 4-640621-9 |
| YES | 45.72[1.800] | 18 | 4-640621-8 |
| YES | 43.18[1.700] | 17 | 4-640621-7 |
| YES | 40.64[1.600] | 16 | 4-640621-6 |
| YES | 38.10[1.500] | 15 | 4-640621-5 |
| YES | 35.56[1.400] | 14 | 4-640621-4 |
| YES | 33.02[1.300] | 13 | 4-640621-3 |
| YES | 30.48[1.200] | 12 | 4-640621-2 |
| YES | 27.94[1.100] | 11 | 4-640621-1 |
| YES | 25.40[1.000] | 10 | 4-640621-0 |
| YES | 22.86[.900] | 9 | 3-640621-9 |
| YES | 20.32[.800] | 8 | 3-640621-8 |
| YES | 17.78[.700] | 7 | 3-640621-7 |
| YES | 15.24[.600] | 6 | 3-640621-6 |
| YES | 12.70[.500] | 5 | 3-640621-5 |
| YES | 10.16[.400] | 4 | 3-640621-4 |
| YES | 7.62[.300] | 3 | 3-640621-3 |
| YES | 5.08[.200] | 2 | 3-640621-2 |



| | | | | |
|----|--------------|----|------------|--------------------------|
| NO | 71.12[2.800] | 28 | 2-640621-8 | SUPERSEDED BY 5-640621-8 |
| NO | 68.58[2.700] | 27 | 2-640621-7 | SUPERSEDED BY 5-640621-7 |
| NO | 66.04[2.600] | 26 | 2-640621-6 | SUPERSEDED BY 5-640621-6 |
| NO | 63.50[2.500] | 25 | 2-640621-5 | SUPERSEDED BY 5-640621-5 |
| NO | 60.96[2.400] | 24 | 2-640621-4 | SUPERSEDED BY 5-640621-4 |
| NO | 58.42[2.300] | 23 | 2-640621-3 | SUPERSEDED BY 5-640621-3 |
| NO | 55.88[2.200] | 22 | 2-640621-2 | SUPERSEDED BY 5-640621-2 |
| NO | 53.34[2.100] | 21 | 2-640621-1 | SUPERSEDED BY 5-640621-1 |
| NO | 50.80[2.000] | 20 | 2-640621-0 | SUPERSEDED BY 5-640621-0 |
| NO | 48.26[1.900] | 19 | 1-640621-9 | SUPERSEDED BY 4-640621-9 |
| NO | 45.72[1.800] | 18 | 1-640621-8 | SUPERSEDED BY 4-640621-8 |
| NO | 43.18[1.700] | 17 | 1-640621-7 | SUPERSEDED BY 4-640621-7 |
| NO | 40.64[1.600] | 16 | 1-640621-6 | SUPERSEDED BY 4-640621-6 |
| NO | 38.10[1.500] | 15 | 1-640621-5 | SUPERSEDED BY 4-640621-5 |
| NO | 35.56[1.400] | 14 | 1-640621-4 | SUPERSEDED BY 4-640621-4 |
| NO | 33.02[1.300] | 13 | 1-640621-3 | SUPERSEDED BY 4-640621-3 |
| NO | 30.48[1.200] | 12 | 1-640621-2 | SUPERSEDED BY 4-640621-2 |
| NO | 27.94[1.100] | 11 | 1-640621-1 | SUPERSEDED BY 4-640621-1 |
| NO | 25.40[1.000] | 10 | 1-640621-0 | SUPERSEDED BY 4-640621-0 |
| NO | 22.86[.900] | 9 | -640621-9 | SUPERSEDED BY 3-640621-9 |
| NO | 20.32[.800] | 8 | -640621-8 | SUPERSEDED BY 3-640621-8 |
| NO | 17.78[.700] | 7 | -640621-7 | SUPERSEDED BY 3-640621-7 |
| NO | 15.24[.600] | 6 | -640621-6 | SUPERSEDED BY 3-640621-6 |
| NO | 12.70[.500] | 5 | -640621-5 | SUPERSEDED BY 3-640621-5 |
| NO | 10.16[.400] | 4 | -640621-4 | SUPERSEDED BY 3-640621-4 |
| NO | 7.62[.300] | 3 | -640621-3 | SUPERSEDED BY 3-640621-3 |
| NO | 5.08[.200] | 2 | -640621-2 | SUPERSEDED BY 3-640621-2 |

- 1 MATERIAL: CONNECTOR - NYLON UL94V-2 (WHITE).
CONTACTS - 0.30[.012] THICK COPPER ALLOY BRIGHT TIN-LEAD .00203[.000080] MIN THICKNESS FOR 640621-2 THRU 2-640621-8.
MATTE WHISKER MITIGATED TIN .00203[.000080] MIN THICKNESS OVER NICKEL UNDERPLATE FOR 3-640621-2 THRU 5-640621-8.
- 2. CONTACTS ACCEPT 24 AWG WIRE WITH 1.52[.060] MAX INSULATION DIAMETER.
- 3. CONTACTS MUST ACCEPT 0.64±0.03[.025] POST AND REMAIN LOCKED IN POSITION.
- 4 IDENTIFICATION NUMBER FOR LAST CIRCUIT MAY NOT APPEAR ON ALL ASSEMBLIES.
- 5. DIMENSIONS IN BRACKETS ARE IN INCHES.
- 6. HOUSING FEATURES ARE: FEED THRU WITH LOCKING RAMP.
- 7 OBSOLETE PARTS: OBSOLETE CIS STREAMLINING PER D.RENAUD/D.SINISI
- 8 OBSOLETE PARTS

| | | | |
|--|--|----------------------------|--|
| THIS DRAWING IS A CONTROLLED DOCUMENT. | | DWN S. CARPENTER 11JUN2003 | STE TE Connectivity |
| DIMENSIONS: mm [INCHES] | | CHK D. BOSSI 11JUN2003 | |
| TOLERANCES UNLESS OTHERWISE SPECIFIED: | | APVD D. BOSSI 11JUN2003 | NAME |
| 0 PLC ± | | PRODUCT SPEC | MTA-100 CONNECTOR ASSEMBLY, 24 AWG, STANDARD |
| 1 PLC ± | | APPLICATION SPEC | 108-1050 |
| 2 PLC ± | | 114-1019 | SIZE CAGE CODE DRAWING NO RESTRICTED TO |
| 3 PLC ± 0.13 [0.005] | | WEIGHT | A2 00779 C=640621 |
| 4 PLC ± | | CUSTOMER DRAWING | SCALE 5:1 SHEET 1 OF 1 REV W |
| ANGLES ± | | | |
| FINISH 1 | | | |

X-ON Electronics

Largest Supplier of Electrical and Electronic Components

Click to view similar products for [Headers & Wire Housings](#) category:

Click to view products by [TE Connectivity](#) manufacturer:

Other Similar products are found below :

[892-18-020-10-001101](#) [58102-G61-06LF](#) [582553-1](#) [0009485154](#) [009176003701906](#) [0050291907](#) [LY20-4P-DT1-P1E-BR](#) [02.125.8002.8](#)
[609-3404](#) [61062-3](#) [61082-181009](#) [622-3653LF](#) [63453-116](#) [636-1030](#) [636-1427](#) [636-3427](#) [636-4007](#) [641938-9](#) [641991-4](#) [644827-2](#) [65817-](#)
[010LF](#) [65817-015LF](#) [65863-015LF](#) [66207-023LF](#) [67095-007LF](#) [67601157](#) [68645-018](#) [68648-049](#) [70.362.1628.0](#) [70-4210](#) [70-4226B](#) [70-](#)
[4853B](#) [707-5020](#) [707-5028](#) [71.350.2428.0](#) [71918-208LF](#) [71961-016LF](#) [733-134](#) [733-162](#) [754199-000](#) [760-3052](#) [787-8014-00](#) [79531-3000](#)
[FCN-360C032-B](#) [FCN-367T-T012/H](#) [FCN-723D010/2](#) [80.063.4001.1](#) [800-90-001-10-001000](#) [800-90-010-10-002000](#) [801-43-002-10-013000](#)