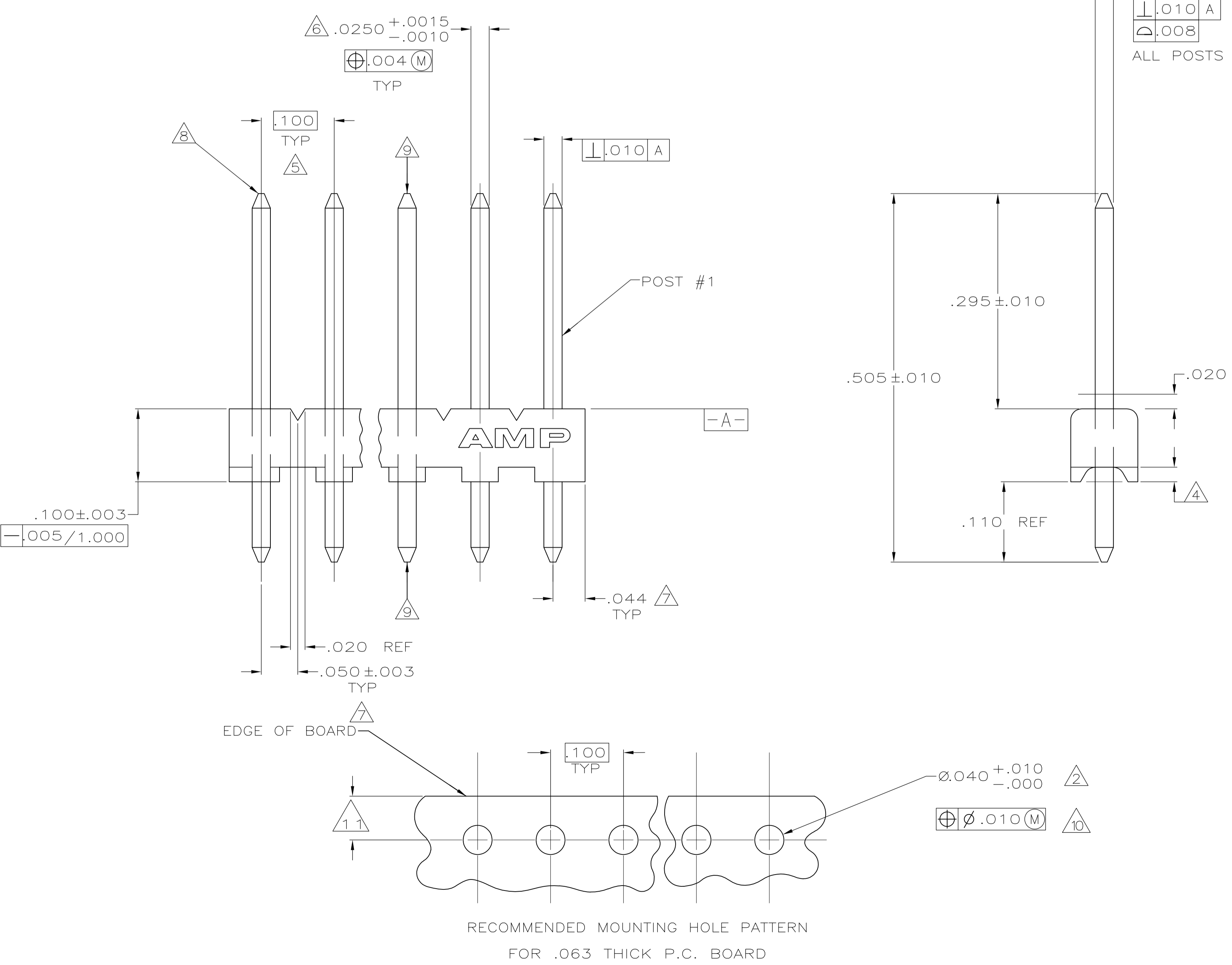
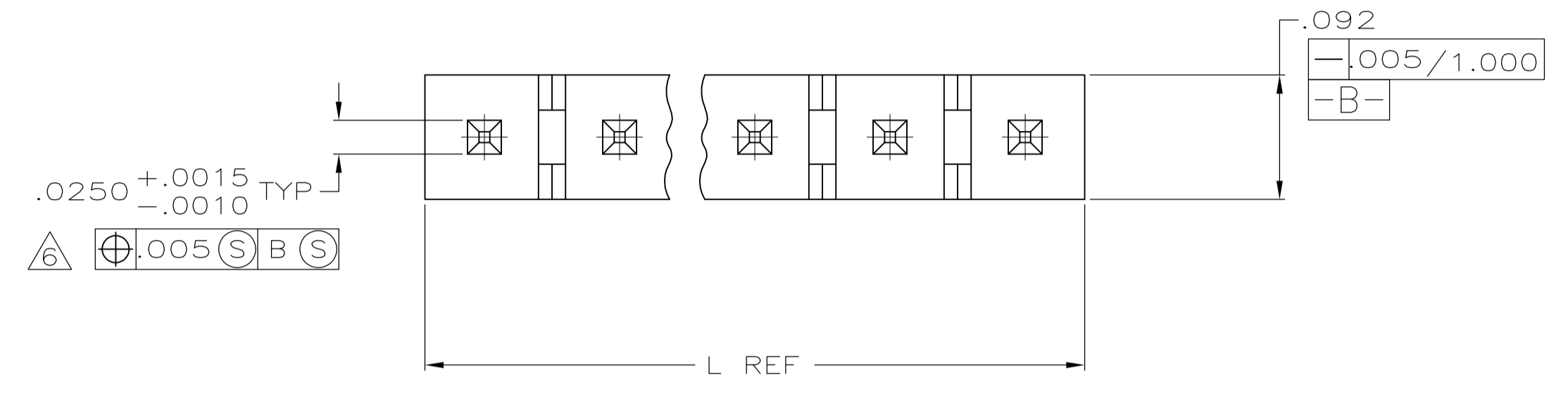


- 1 MATERIAL:  
BASE: THERMOPLASTIC POLYESTER,UL 94V-0 (NATURAL).  
POST: COPPER ALLOY (TIN OR TIN LEAD PLATED,.000150 MIN THK).
- 2 ONE HOLE MAY BE UNDERSIZED (.032-.035 DIA) FOR ASSEMBLY RETENTION DURING WAVE SOLDERING.
- 3 PARTS MUST COMPLY WITH AMP SOLDERABILITY SPEC 109-11-2.
- 4 PLASTIC AROUND POST PERMISSIBLE IN THIS AREA ONLY.
- 5 DIMENSION APPLIES WHEN HEADER IS HELD FLAT.
- 6 MEASURED AT  $\perp A$
- 7 COORDINATE DIMENSION APPLIES FROM CENTER OF ACTUAL FEATURE.
- 8 RADIUS AT TIP PERMITTED, BOTH ENDS.
- 9 POST MUST WITHSTAND 3.0 LB MIN AXIAL FORCE IN BOTH DIRECTIONS WITHOUT DISLODGING.
- 10 SOLDER SIDE OF BOARD IS SHOWN.
- 11 DIMENSION SHOULD BE .060 MIN WHEN MATING WITH A MTA 100 CONNECTOR ASSEMBLY OR A CST 100 CONNECTOR.
- 12. AMP LOGO MAY OR MAY NOT APPEAR ON MOLDING HOUSING.



SUPERSEDED BY 5-644456-8  
 SUPERSEDED BY 5-644456-7  
 SUPERSEDED BY 5-644456-6  
 SUPERSEDED BY 5-644456-5  
 SUPERSEDED BY 5-644456-4  
 SUPERSEDED BY 5-644456-3  
 SUPERSEDED BY 5-644456-2  
 SUPERSEDED BY 5-644456-1  
 SUPERSEDED BY 5-644456-0  
 SUPERSEDED BY 4-644456-9  
 SUPERSEDED BY 4-644456-8  
 SUPERSEDED BY 4-644456-7  
 SUPERSEDED BY 4-644456-6  
 SUPERSEDED BY 4-644456-5  
 SUPERSEDED BY 4-644456-4  
 SUPERSEDED BY 4-644456-3  
 SUPERSEDED BY 4-644456-2  
 SUPERSEDED BY 4-644456-1  
 SUPERSEDED BY 4-644456-0  
 SUPERSEDED BY 3-644456-9  
 SUPERSEDED BY 3-644456-8  
 SUPERSEDED BY 3-644456-7  
 SUPERSEDED BY 3-644456-6  
 SUPERSEDED BY 3-644456-5  
 SUPERSEDED BY 3-644456-4  
 SUPERSEDED BY 3-644456-3  
 SUPERSEDED BY 3-644456-2

NO. OF POSTS	IN	MM	NO. OF CIRCUITS
28	2.788	70.82	28
27	2.688	68.28	27
26	2.588	65.74	26
25	2.488	63.20	25
24	2.388	60.66	24
23	2.288	58.12	23
22	2.188	55.58	22
21	2.088	53.04	21
20	1.988	50.50	20
19	1.888	47.96	19
18	1.788	45.42	18
17	1.688	42.88	17
16	1.588	40.34	16
15	1.488	37.80	15
14	1.388	35.26	14
13	1.288	32.72	13
12	1.188	30.18	12
11	1.088	27.64	11
10	.988	25.10	10
9	.888	22.56	9
8	.788	20.02	8
7	.688	17.48	7
6	.588	14.94	6
5	.488	12.40	5
4	.388	9.86	4
3	.288	7.32	3
2	.188	4.78	2

THIS DRAWING IS A CONTROLLED DOCUMENT.

DIMENSIONS: INCHES. TOLERANCES UNLESS OTHERWISE SPECIFIED:

0 PLC	±
1 PLC	±
2 PLC	±
3 PLC	± .005
4 PLC	±
ANGLES	±

MATERIAL:  $\perp$  FINISH:  $\perp$

APPROVED: S. CARPENTER, D. ROSSI, D. ROSSI

DATE: 23MAY2003, 23MAY2003, 23MAY2003

NAME: MTA-100 HEADER ASSEMBLY, NARROW, .025 SQUARE STRAIGHT POST, TIN PLATED

SIZE: A1, CASE CODE: 00779, DRAWING NO: 644456

WEIGHT: CUSTOMER DRAWING, SCALE: 10:1, SHEET: 1 OF 1, REV: D2

## X-ON Electronics

Largest Supplier of Electrical and Electronic Components

*Click to view similar products for [Headers & Wire Housings](#) category:*

*Click to view products by [TE Connectivity](#) manufacturer:*

Other Similar products are found below :

[95000-104TRLF](#) [10135584-644402LF](#) [DF62W-EP2022PCA](#) [95000-106TRLF](#) [DF62W-2022SCA](#) [DF62W-EP2022PC](#) [2203348](#) [DF62W-2022SC](#) [1084018](#) [1029039](#) [1084017](#) [802-10-012-10-002000](#) [1112640](#) [1112639](#) [000-34000](#) [0009482033](#) [0009507031](#) [57102-S06-03LF](#) [57202-S52-04LF](#) [PCN6-15S-2.5E](#) [0039019024](#) [58102-G61-06LF](#) [582553-1](#) [0009508121](#) [0050291907](#) [018731A](#) [LY20-4P-DT1-P1E-BR](#) [02.125.8002.8](#) [60101931](#) [60598-1 \(Cut Strip\)](#) [M1625-3R/100](#) [61062-3](#) [61082-181009](#) [636-1427](#) [638009-1](#) [641938-9](#) [641991-4](#) [644168-1](#) [647662-1](#) [65039-019ELF](#) [65817-002LF](#) [65817-015LF](#) [65863-015LF](#) [66207-023LF](#) [67016-026LF](#) [67046-001LF](#) [67095-007LF](#) [68002-116](#) [68016-236H](#) [68648-049](#)