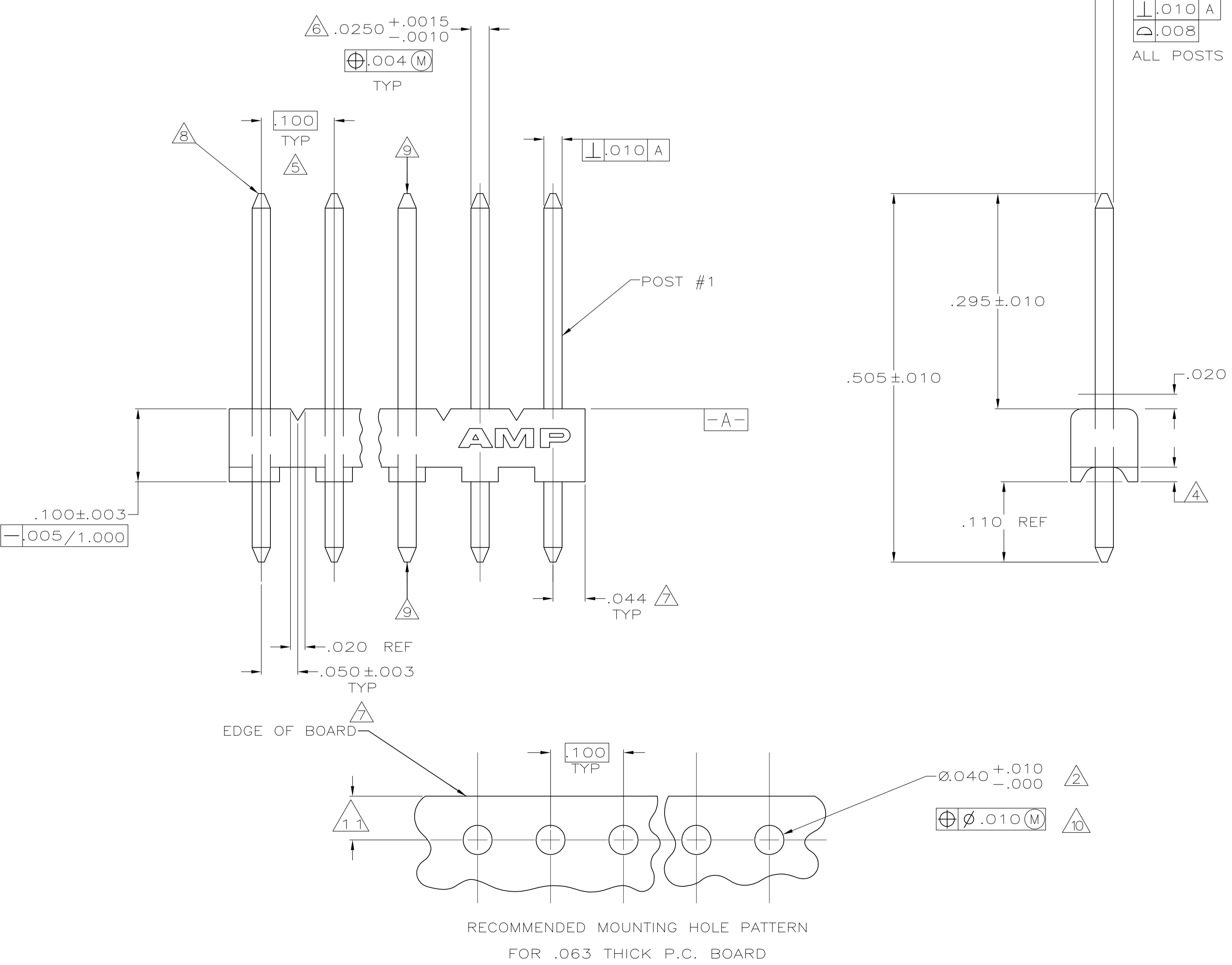
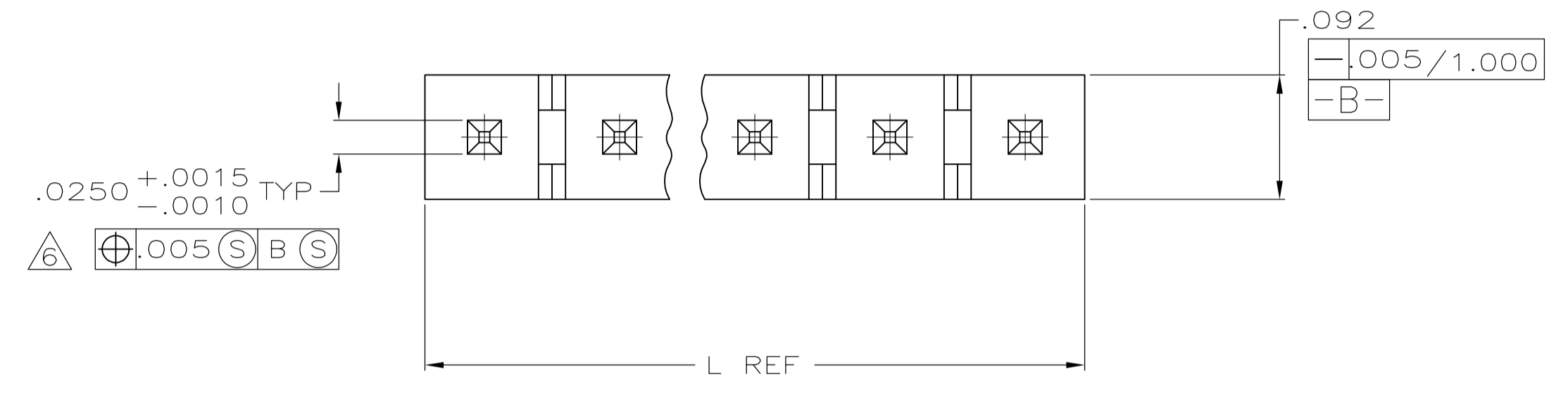


- 1 MATERIAL:  
BASE: THERMOPLASTIC POLYESTER,UL 94V-0 (NATURAL).  
POST: COPPER ALLOY (TIN OR TIN LEAD PLATED,.000150 MIN THK).
- 2 ONE HOLE MAY BE UNDERSIZED (.032-.035 DIA) FOR ASSEMBLY RETENTION DURING WAVE SOLDERING.
- 3 PARTS MUST COMPLY WITH AMP SOLDERABILITY SPEC 109-11-2.
- 4 PLASTIC AROUND POST PERMISSIBLE IN THIS AREA ONLY.
- 5 DIMENSION APPLIES WHEN HEADER IS HELD FLAT.
- 6 MEASURED AT  $\perp$ -A-
- 7 COORDINATE DIMENSION APPLIES FROM CENTER OF ACTUAL FEATURE.
- 8 RADIUS AT TIP PERMITTED, BOTH ENDS.
- 9 POST MUST WITHSTAND 3.0 LB MIN AXIAL FORCE IN BOTH DIRECTIONS WITHOUT DISLODGING.
- 10 SOLDER SIDE OF BOARD IS SHOWN.
- 11 DIMENSION SHOULD BE .060 MIN WHEN MATING WITH A MTA 100 CONNECTOR ASSEMBLY OR A CST 100 CONNECTOR.
- 12. AMP LOGO MAY OR MAY NOT APPEAR ON MOLDING HOUSING.



SUPERSEDED BY 5-644456-8  
 SUPERSEDED BY 5-644456-7  
 SUPERSEDED BY 5-644456-6  
 SUPERSEDED BY 5-644456-5  
 SUPERSEDED BY 5-644456-4  
 SUPERSEDED BY 5-644456-3  
 SUPERSEDED BY 5-644456-2  
 SUPERSEDED BY 5-644456-1  
 SUPERSEDED BY 5-644456-0  
 SUPERSEDED BY 4-644456-9  
 SUPERSEDED BY 4-644456-8  
 SUPERSEDED BY 4-644456-7  
 SUPERSEDED BY 4-644456-6  
 SUPERSEDED BY 4-644456-5  
 SUPERSEDED BY 4-644456-4  
 SUPERSEDED BY 4-644456-3  
 SUPERSEDED BY 4-644456-2  
 SUPERSEDED BY 4-644456-1  
 SUPERSEDED BY 4-644456-0  
 SUPERSEDED BY 3-644456-9  
 SUPERSEDED BY 3-644456-8  
 SUPERSEDED BY 3-644456-7  
 SUPERSEDED BY 3-644456-6  
 SUPERSEDED BY 3-644456-5  
 SUPERSEDED BY 3-644456-4  
 SUPERSEDED BY 3-644456-3  
 SUPERSEDED BY 3-644456-2

28	2.788	70.82	28	5-644456-8
27	2.688	68.28	27	5-644456-7
26	2.588	65.74	26	5-644456-6
25	2.488	63.20	25	5-644456-5
24	2.388	60.66	24	5-644456-4
23	2.288	58.12	23	5-644456-3
22	2.188	55.58	22	5-644456-2
21	2.088	53.04	21	5-644456-1
20	1.988	50.50	20	5-644456-0
19	1.888	47.96	19	4-644456-9
18	1.788	45.42	18	4-644456-8
17	1.688	42.88	17	4-644456-7
16	1.588	40.34	16	4-644456-6
15	1.488	37.80	15	4-644456-5
14	1.388	35.26	14	4-644456-4
13	1.288	32.72	13	4-644456-3
12	1.188	30.18	12	4-644456-2
11	1.088	27.64	11	4-644456-1
10	.988	25.10	10	4-644456-0
9	.888	22.56	9	3-644456-9
8	.788	20.02	8	3-644456-8
7	.688	17.48	7	3-644456-7
6	.588	14.94	6	3-644456-6
5	.488	12.40	5	3-644456-5
4	.388	9.86	4	3-644456-4
3	.288	7.32	3	3-644456-3
2	.188	4.78	2	3-644456-2

28	2.788	70.82	28	2-644456-8
27	2.688	68.28	27	2-644456-7
26	2.588	65.74	26	2-644456-6
25	2.488	63.20	25	2-644456-5
24	2.388	60.66	24	2-644456-4
23	2.288	58.12	23	2-644456-3
22	2.188	55.58	22	2-644456-2
21	2.088	53.04	21	2-644456-1
20	1.988	50.50	20	2-644456-0
19	1.888	47.96	19	1-644456-9
18	1.788	45.42	18	1-644456-8
17	1.688	42.88	17	1-644456-7
16	1.588	40.34	16	1-644456-6
15	1.488	37.80	15	1-644456-5
14	1.388	35.26	14	1-644456-4
13	1.288	32.72	13	1-644456-3
12	1.188	30.18	12	1-644456-2
11	1.088	27.64	11	1-644456-1
10	.988	25.10	10	1-644456-0
9	.888	22.56	9	644456-9
8	.788	20.02	8	644456-8
7	.688	17.48	7	644456-7
6	.588	14.94	6	644456-6
5	.488	12.40	5	644456-5
4	.388	9.86	4	644456-4
3	.288	7.32	3	644456-3
2	.188	4.78	2	644456-2

LEADFREE	NO. OF POSTS	IN	MM	NO. OF CIRCUITS
		L		

THIS DRAWING IS A CONTROLLED DOCUMENT.

DIMENSIONS: INCHES

TOLERANCES UNLESS OTHERWISE SPECIFIED:

0 PLC	±
1 PLC	±
2 PLC	±
3 PLC	± .005
4 PLC	±
ANGLES	±

MATERIAL:  $\perp$  FINISH:  $\perp$

APPROVED: S. CARPENTER 23MAY2003, D. ROSSI 23MAY2003

NAME: MTA-100 HEADER ASSEMBLY, NARROW, .025 SQUARE STRAIGHT POST, TIN PLATED

SIZE: A1, CASE CODE: 00779, DRAWING NO: 644456

SCALE: 10:1, SHEET: 1 OF 1, REV: D2

## X-ON Electronics

Largest Supplier of Electrical and Electronic Components

*Click to view similar products for [Headers & Wire Housings](#) category:*

*Click to view products by [TE Connectivity](#) manufacturer:*

Other Similar products are found below :

[95000-104TRLF](#) [10135584-644402LF](#) [DF62W-EP2022PCA](#) [95000-106TRLF](#) [DF62W-2022SCA](#) [DF62W-EP2022PC](#) [2203348](#) [DF62W-2022SC](#) [1084018](#) [1029039](#) [1084017](#) [802-10-012-10-002000](#) [1112640](#) [1112639](#) [000-34000](#) [0009482033](#) [0009507031](#) [57102-S06-03LF](#) [57202-S52-04LF](#) [PCN6-15S-2.5E](#) [0039019024](#) [58102-G61-06LF](#) [582553-1](#) [0009508121](#) [0050291907](#) [018731A](#) [LY20-4P-DT1-P1E-BR](#) [02.125.8002.8](#) [60101931](#) [60598-1 \(Cut Strip\)](#) [M1625-3R/100](#) [61062-3](#) [61082-181009](#) [636-1427](#) [638009-1](#) [641938-9](#) [641991-4](#) [644168-1](#) [647662-1](#) [65039-019ELF](#) [65817-002LF](#) [65817-015LF](#) [65863-015LF](#) [66207-023LF](#) [67016-026LF](#) [67046-001LF](#) [67095-007LF](#) [68002-116](#) [68016-236H](#) [68648-049](#)