

THIS DRAWING AND THE INFORMATION ARE THE PROPERTY OF TYCO ELECTRONICS AND ARE TO BE HELD IN TRUST AND CONFIDENCE. PUBLICATION, DUPLICATION, OR USE FOR ANY PURPOSE NOT EXPRESSLY AUTHORIZED IN WRITING BY TYCO ELECTRONICS IS PROHIBITED.

REVISIONS	
LTR	DESCRIPTION
B	REVISED PER ECN T-20519
B1	ADMINISTRATIVE CHANGE PER ECO-11-024448
DATE	APPROVED
96/1/30	M.HIGGY
Dec/6/2011	M.HIGGY

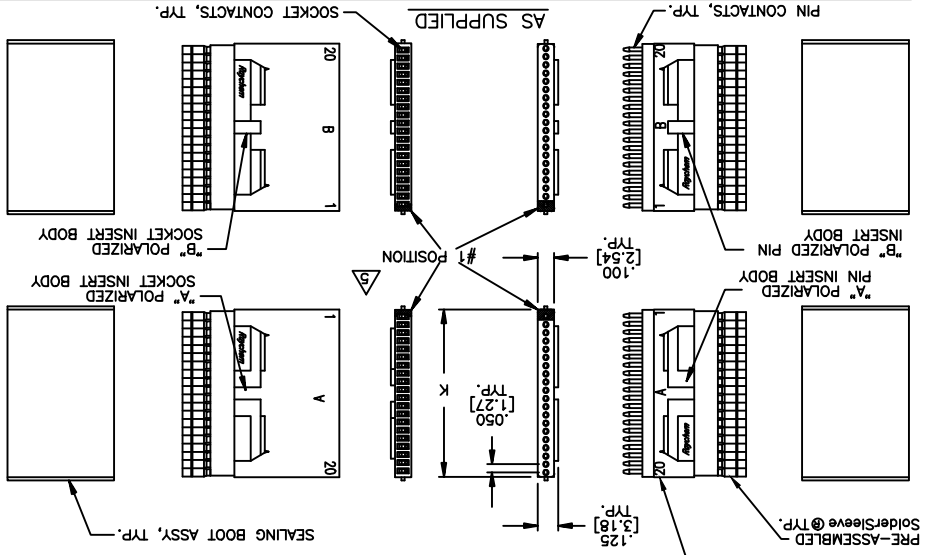
NOTES:

- PART NUMBER VARIABLE:
 - MTC50-EXX-XXX
 - P42 = PIN INSERT, S96, PASS
 - S42 = SOCKET INSERT, S96, PASS
 - 1 = 1 INCH INSERT
 - 2 = 2 INCH INSERT
 - A = "A" INSERT
 - B = "B" INSERT
- THIS PART IS QUALIFIED TO C6111.
- MATERIAL:
 - TRANSPARENT BLUE HEAT SHRINKABLE, MODIFIED THERMOPLASTIC HOT MELT SEALANT.
 - C. INSERT BODY: HIGH GRADE POLYARYLENE THERMOPLASTIC OR EQUIVALENT.
 - D. PIN/SOCKET CONTACTS: COPPER ALLOY C17200 PER ASTM B194. SEE RAYCHEM SPECIFICATION CONTROL DRAWING D-141-0169.
 - E. PRE-ASSEMBLED Solder sleeves
 - F. FINISH:
 - A. PIN/SOCKET INSERT: AS MOLDED
 - B. PIN/SOCKET CONTACTS: GOLD PLATED PER MIL-G-45204, TYPE 1, GRADE C, CLASS 1 OVER SUITABLE UNDERPLATE.
 - SOLDER COATED PER QQ-S-571, S96, FLUX COATED PER QQ-S-571, TYPE RMA.
- POSITION IS MARKED IN CONTRASTING COLOR.

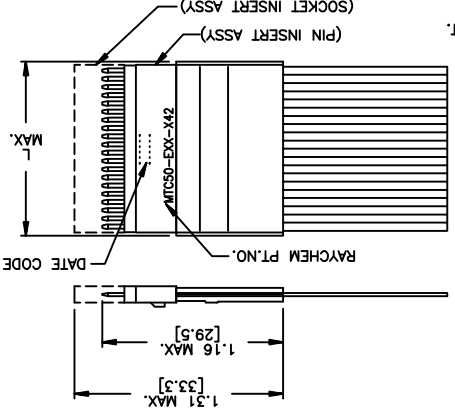
- SEALING BOOT:
 - A. SEALING BOOT: TRANSPARENT BLUE HEAT SHRINKABLE, RADIATION CROSS-LINKED PVDf.
 - B. CABLE & INSERT SEALS: MODIFIED THERMOPLASTIC HOT MELT SEALANT.
 - C. INSERT BODY: HIGH GRADE POLYARYLENE THERMOPLASTIC OR EQUIVALENT.
 - D. PIN/SOCKET CONTACTS: COPPER ALLOY C17200 PER ASTM B194. SEE RAYCHEM SPECIFICATION CONTROL DRAWING D-141-0169.
 - E. PRE-ASSEMBLED Solder sleeves
 - F. FINISH:
 - A. PIN/SOCKET INSERT: AS MOLDED
 - B. PIN/SOCKET CONTACTS: GOLD PLATED PER MIL-G-45204, TYPE 1, GRADE C, CLASS 1 OVER SUITABLE UNDERPLATE.
 - SOLDER COATED PER QQ-S-571, S96, FLUX COATED PER QQ-S-571, TYPE RMA.
- DIELECTRIC WITHSTANDING VOLTAGE:

TEST CONDITION (MATED)	TEST VOLTAGE VAC RMS AT 60 HZ.
SEA LEVEL	750
ALTITUDE 70,000 FT. (33.5 TORR) AMBIENT TEMP.	500
ALTITUDE 80,000 FT. (20.6 TORR) -50°C TEMP.	375

- CURRENT RATING: 2.0 AMPS PER CONTACT.
- USABLE WIRE SIZE: FLAT CONDUCTOR CABLE: 28 AWG
- CONSULT FACTORY FOR RAYCHEM ENGINEERING STANDARD FOR TERMINATION METHOD.
- THE CORRECT MATING PART FOR A RAYCHEM MTC50 PIN INSERT IS A RAYCHEM MTC50 SOCKET INSERT. THE SPECIFIED PERFORMANCE OF THIS CONNECTOR IS BASED ON TEST PERFORMANCE WHEN ASSEMBLED WITH THE CORRECT MATING PART.



DESCRIPTION	1" INSERT	2" INSERT
WEIGHT (MAXIMUM)	0.074 LBS. [3.357 gm]	0.147 LBS. [6.668 gm]
L	1.140 [28.96]	2.140 [54.36]
K	1.035 [26.29]	2.035 [51.69]



Raychem MTC CUSTOMER DRAWING
 © 2011 Tyco Electronics. All rights reserved

UNLESS OTHERWISE SPECIFIED DIMENSIONS ARE IN INCHES. METRIC DIMENSIONS ARE IN BRACKETS.	
DECIMALS	.XXX ± .005 [.13 mm]
ANGLES	.XX ± .03 [.8 mm]
WEIGHT	lbs [g]
DRAWN: MCHOBSON 90NOV29	
CHECKED:	
APPROVED: AKN 90DEC11	APPROVED: EZ 90DEC11
TITLE: INSERT, PASS TERMINATION, S96, 125 CELSIUS DEGREE OPERATING TEMPERATURE, FLAT CABLE CONDUCTOR, 28 AWG, MTC50 SERIES	
SIZE: C	CAGE CODE: 06090
DWG. NO.: MTC50-EXX-P42/S42	REV: B1
SCALE: NONE	
SHEET 1 OF 1	

MTC50-EXX-P42/S42

X-ON Electronics

Largest Supplier of Electrical and Electronic Components

Click to view similar products for [Rack & Panel Connectors](#) category:

Click to view products by [TE Connectivity](#) manufacturer:

Other Similar products are found below :

[00170420102](#) [00171420202](#) [00171440002](#) [008026165000265](#) [00-8219-072-000-112P44](#) [008219072000112P5](#) [02-014-013-5200-000](#) [613467-000](#) [CTJ112E01E-513](#) [CTJ116E03A-513](#) [M81714/63-22S L/C](#) [M81714/65-12-1](#) [66020-2](#) [CW8958-000](#) [699886-000](#) [D250-50632](#)
[70.400.3240.0](#) [70.955.2453.3](#) [733753-000](#) [F22831-000](#) [780-522-DPX34RG8-02](#) [MMA25-0341D1](#) [8660-501](#) [87.060.0053.0](#) [900709N001](#)
[QRP4-12P-C\(01\)](#) [QR/P6-6S-C\(01\)](#) [AC-600003-004](#) [1218600-1](#) [D-659-0061](#) [DMC-MD 24 C-T](#) [1-445717-6](#) [1484398-2](#) [1484399-2](#) [1484469-2](#) [MR-34MG](#) [1484225-1](#) [1484398-1](#) [1604997-2](#) [1663130-1](#) [1663767-7](#) [1663767-8](#) [MTC100-BF1-P31CS015](#) [MTC100-KT2-0083](#) [MTC100-KT2-0123-003](#) [MTC100-YA1-005](#) [MTCB1X-105-XXX](#) [MTCPQKT1P2PGDC](#) [MTCPQKT1R2PGCA](#) [MTCR-103-04S](#)