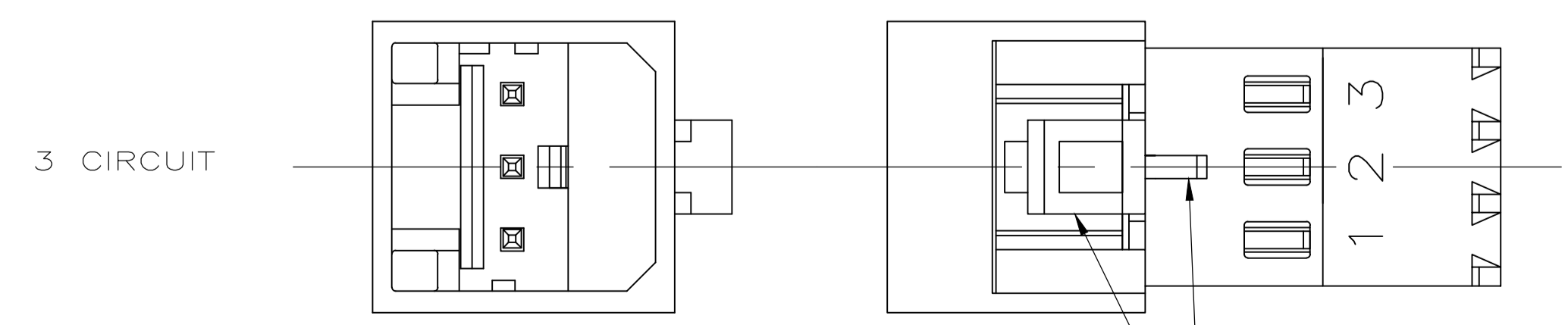
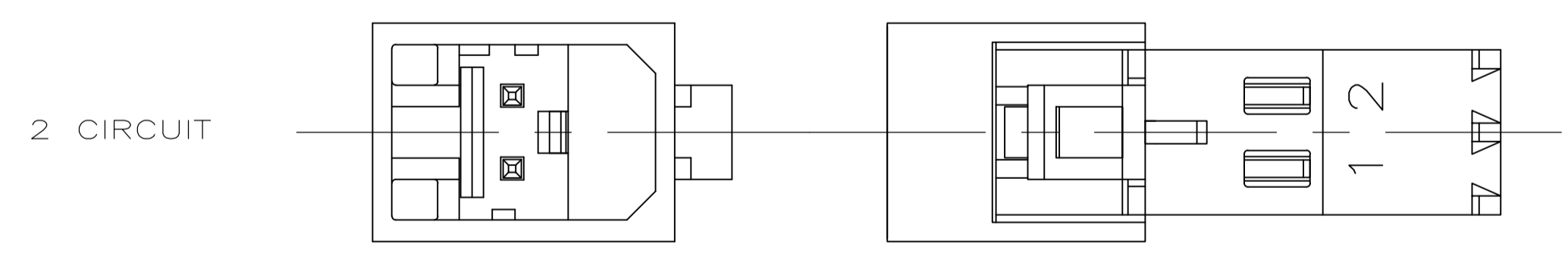


DETAIL B
SCALE 10:1
ALTERNATE CONFIGURATION



DETAIL A 3

- 1 MATERIAL:
HOUSING- NYLON UL94V-2 (RED).
CONTACTS- 0.30 [.012] THK COPPER ALLOY
PLATING : BRIGHT TIN-LEAD FOR 0.00203[.000080] MIN THK 647000-2 THRU 1-647000-9 OR MATTE TIN 0.00203[.000080] MIN THK. FOR 3-647000-2 THRU 4-647000-9.
- 2 CONTACTS ACCEPT 22 AWG (0.3 - 0.4 mm²) TIN PLATED SOLID, CONCENTRIC FUSED STRANDED, OR CONCENTRIC STRANDED (7 AND 19 STRAND) WIRE WITH 1.52 [.060] MAX INSULATION DIAMETER.
- 3 MATES WITH STANDARD MTA-100 CONNECTORS: OF THE SAME CIRCUIT SIZES WITH SIMILARLY PLATED CONTACTS WITH POLARIZING TABS-CIRCUIT SIZES 4-19 ONLY WITHOUT POLARIZING TABS-CIRCUIT SIZES 2 & 3.

DOES NOT MATE WITH MTA-100 CONNECTORS: WITH POLARIZING TABS-CIRCUIT SIZES 2 & 3 ONLY. (SEE DETAIL A) WITH BLOCKED CIRCUITS -ALL CIRCUIT SIZES. NOT RECOMMENDED FOR MATING WITH MTA-100 CONNECTOR WITHOUT POLARIZING TABS. CIRCUIT SIZES 4-19.
- 4 ACCESSORIES:
REPLACEMENT IDC CONTACTS: 647030-1.
COVERS: SEE TABLE
- 5 QUANTITY OF CENTRALLY POSITIONED RAILS VARIES WITH CIRCUIT SIZE. (SEE TABLE) LOCATION MAY DIFFER FROM EXAMPLE SHOWN.
- 6 DIMENSIONS IN BRACKETS ARE IN INCHES.
- 7 SIMILAR SIZED LOCK AND SINGLE TAB USED OR CIRCUITS 4 & 5.
- 8 QUANTITY OF GUSSET RIBS VARIES WITH CIRCUIT SIZE (SEE TABLE). LOCATION MAY DIFFER FROM EXAMPLE SHOWN.
- 9 INNER END RAIL PAIR NOT PRESENT FOR CIRCUIT SIZES 2 OR 3.
- 10 CIRCUIT ID MAY APPEAR FULLY NUMBERED OR SHOWING LOCATION 1 ONLY DEPENDING ON CIRCUIT SIZE.
- 11 OBSOLETE PARTS: OBSOLETE CIS STREAMLINING PER D.RENAUD/D.SINISI

THIS DRAWING IS A CONTROLLED DOCUMENT.		DIN R. LEWIS 28APR97	TE Connectivity
DIMENSIONS: mm [INCHES]		TOLERANCES UNLESS OTHERWISE SPECIFIED: 0 PLC ± - 1 PLC ± - 2 PLC ± 0.20 [.007] 3 PLC ± - 4 PLC ± - ANGLES ± -	
MATERIAL 1		FINISH 1	NAME: MTA-100 POSTED CONNECTOR ASSEMBLY, CLOSED END, 22 AWG, TIN SIZE: A1 CAGE CODE: 00779 DRAWING NO: 647000 WEIGHT: - CUSTOMER DRAWING
4805 (3/11)		SCALE: 5:1	RESTRICTED TO: - SHEET 1 OF 2 REV H

QTY OF GUSSET RIBS	QTY OF CENTRAL RAILS	MM	IN	MM	IN	MM	IN	MM	IN	NO. OF CIRCUITS	PART NO
4	2	45.72	1.800	48.95	1.927	50.80	2.000	19		4-647000-9	
4	2	43.18	1.700	46.41	1.827	48.26	1.900	18		4-647000-8	
4	2	40.64	1.600	43.87	1.727	45.72	1.800	17		4-647000-7	
4	2	38.10	1.500	41.33	1.627	43.18	1.700	16		4-647000-6	
4	2	35.56	1.400	38.79	1.527	40.64	1.600	15		4-647000-5	
4	2	33.02	1.300	36.25	1.427	38.10	1.500	14		4-647000-4	
4	2	30.48	1.200	33.71	1.327	35.56	1.400	13		4-647000-3	
2	1	27.94	1.100	31.17	1.227	33.02	1.300	12		4-647000-2	
2	1	25.40	1.000	28.63	1.127	30.48	1.200	11		4-647000-1	
2	1	22.86	.900	26.09	1.027	27.94	1.100	10		4-647000-0	
2	1	20.32	.800	23.55	.927	25.40	1.000	9		3-647000-9	
2	0	17.78	.700	21.01	.827	22.86	.900	8		3-647000-8	
0	0	15.24	.600	18.47	.727	20.32	.800	7		3-647000-7	
0	0	12.70	.500	15.93	.627	17.78	.700	6		3-647000-6	
0	0	10.16	.400	13.39	.527	15.24	.600	5		3-647000-5	
0	0	7.62	.300	10.85	.427	12.70	.500	4		3-647000-4	
0	0	5.08	.200	8.31	.327	10.16	.400	3		3-647000-3	
0	0	2.54	.100	5.77	.227	7.62	.300	2		3-647000-2	
4	2	45.72	1.800	48.95	1.927	50.80	2.000	19		1-647000-9	
4	2	43.18	1.700	46.41	1.827	48.26	1.900	18		1-647000-8	
4	2	40.64	1.600	43.87	1.727	45.72	1.800	17		1-647000-7	
4	2	38.10	1.500	41.33	1.627	43.18	1.700	16		1-647000-6	
4	2	35.56	1.400	38.79	1.527	40.64	1.600	15		1-647000-5	
4	2	33.02	1.300	36.25	1.427	38.10	1.500	14		1-647000-4	
4	2	30.48	1.200	33.71	1.327	35.56	1.400	13		1-647000-3	
2	1	27.94	1.100	31.17	1.227	33.02	1.300	12		1-647000-2	
2	1	25.40	1.000	28.63	1.127	30.48	1.200	11		1-647000-1	
2	1	22.86	.900	26.09	1.027	27.94	1.100	10		1-647000-0	
2	1	20.32	.800	23.55	.927	25.40	1.000	9		647000-9	
2	0	17.78	.700	21.01	.827	22.86	.900	8		647000-8	
0	0	15.24	.600	18.47	.727	20.32	.800	7		647000-7	
0	0	12.70	.500	15.93	.627	17.78	.700	6		647000-6	
0	0	10.16	.400	13.39	.527	15.24	.600	5		647000-5	
0	0	7.62	.300	10.85	.427	12.70	.500	4		647000-4	
0	0	5.08	.200	8.31	.327	10.16	.400	3		647000-3	
0	0	2.54	.100	5.77	.227	7.62	.300	2		647000-2	
DUST COVER	STRAIN RELIEF COVERS										
4	ACCESSORIES										

SUPERSEDED BY 4-647000-9
 SUPERSEDED BY 4-647000-8
 SUPERSEDED BY 4-647000-7
 OBSOLETE BY 4-647000-5
 SUPERSEDED BY 4-647000-3
 SUPERSEDED BY 4-647000-1
 OBSOLETE
 SUPERSEDED BY 3-647000-7

THIS DRAWING IS A CONTROLLED DOCUMENT.

DIMENSIONS: mm [INCHES]
 TOLERANCES UNLESS OTHERWISE SPECIFIED:
 0 PLC ± -
 1 PLC ± -
 2 PLC ± -
 3 PLC ± -
 4 PLC ± -
 ANGLES ± -

DWN: R. LEWIS 28APR97
 DSK: R. SWING 28APR97
 APVD: E. BEILES 28APR97
 NAME: MTA-100 POSTED CONNECTOR ASSEMBLY, CLOSED END, 22 AWG, TIN
 PRODUCT SPEC: -
 APPLICATION SPEC: -
 WEIGHT: -
 SIZE: A1 00779
 CAGE CODE: -
 DRAWING NO: 647000
 RESTRICTED TO: -
 SCALE: 1:1
 SHEET: 2 OF 2
 REV: H

CUSTOMER DRAWING
 TE Connectivity
 MTA-100 POSTED CONNECTOR ASSEMBLY, CLOSED END, 22 AWG, TIN

X-ON Electronics

Largest Supplier of Electrical and Electronic Components

Click to view similar products for [Headers & Wire Housings](#) category:

Click to view products by [TE Connectivity](#) manufacturer:

Other Similar products are found below :

[95000-104TRLF](#) [10135584-644402LF](#) [DF62W-EP2022PCA](#) [95000-106TRLF](#) [DF62W-2022SCA](#) [DF62W-EP2022PC](#) [2203348](#) [DF62W-2022SC](#) [1084018](#) [1029039](#) [1084017](#) [802-10-012-10-002000](#) [1112640](#) [1112639](#) [000-34000](#) [0009482033](#) [0009507031](#) [57102-S06-03LF](#) [57202-S52-04LF](#) [PCN6-15S-2.5E](#) [0039019024](#) [58102-G61-06LF](#) [582553-1](#) [0009508121](#) [0050291907](#) [018731A](#) [LY20-4P-DT1-P1E-BR](#) [02.125.8002.8](#) [60101931](#) [60598-1 \(Cut Strip\)](#) [M1625-3R/100](#) [61062-3](#) [61082-181009](#) [636-1427](#) [638009-1](#) [641938-9](#) [641991-4](#) [644168-1](#) [647662-1](#) [65039-019ELF](#) [65817-002LF](#) [65817-015LF](#) [65863-015LF](#) [66207-023LF](#) [67016-026LF](#) [67046-001LF](#) [67095-007LF](#) [68002-116](#) [68016-236H](#) [68648-049](#)