

THIS DRAWING IS UNPUBLISHED.

RELEASED FOR PUBLICATION

20

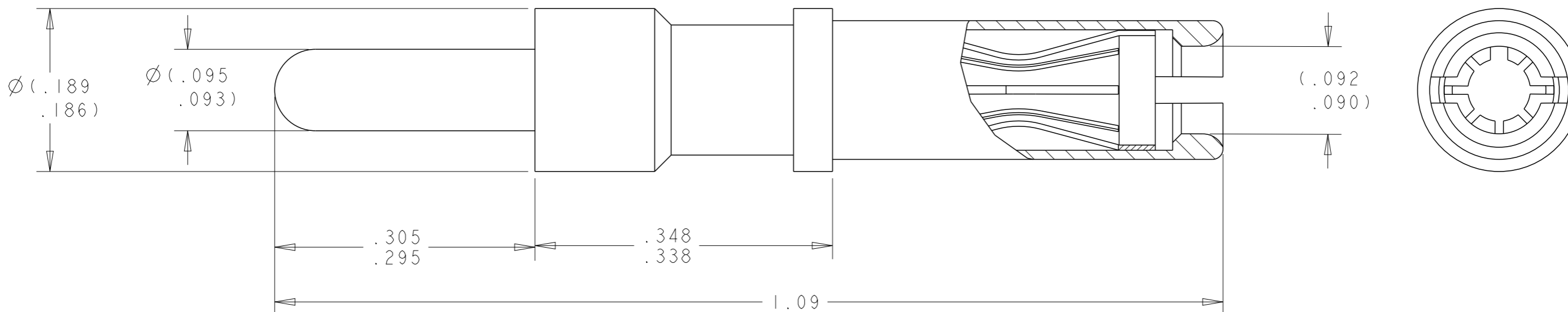
© COPYRIGHT 20 BY -

ALL RIGHTS RESERVED.

LOC GP DIST 00

REVISIONS

P	LTR	DESCRIPTION	DATE	DWN	APVD
	A	NEW DRAWONG	27MAY2013	KH	DO



1 PART NUMBER CHANGES AND OR DESIGN CHANGES AFFECTING ITEM INTERCHANGEABILITY REQUIRE PRIOR TE APPROVAL AND AUTHORIZATION BY REVISION TO THIS DRAWING.

2 MATERIAL:

SOCKET CONTACT: BRASS ALLOY.
 CROWN BAND: BERYLLIUM COPPER.
 HOOD: BERYLLIUM COPPER.

3 FINISHES:

SOCKET CONTACT: GOLD PLATE, .000010 MIN THICK OVER NICKEL, .000040 MIN THICK
 CROWN BAND: GOLD PLATE, .000030 MIN THICK OVER NICKEL, .000050 MIN THICK
 HOOD: GOLD PLATE, .000020 MIN THICK OVER OVER NICKEL, .000075 MIN THICK

4 ITEMS PROVIDED TO THIS SPECIFICATIONS TO BE PERMANENTLY IDENTIFIED PER THE FOLLOWING IDENTIFIER

1648360-1
 PART NUMBER

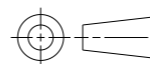
TE PART NO
 XXXXXXXXX-X

DATE CODE
 XXXX

YEAR WEEK
 e.g 0216

THIS DRAWING IS A CONTROLLED DOCUMENT.

DIMENSIONS:
 INCHES



TOLERANCES UNLESS OTHERWISE SPECIFIED:

- 0 PLC ±-
- 1 PLC ±-
- 2 PLC ±-
- 3 PLC ±-
- 4 PLC ±-
- ANGLES ±-
- FINISH -

MATERIAL -

DWN 07MAY2013

CHK KIRAN HOLAL

APVD D.ORRIS 07MAY2013

APVD D.ORRIS 07MAY2013

PRODUCT SPEC -

APPLICATION SPEC -

WEIGHT -

Customer Drawing



TE Connectivity

NAME
 SUBASSEMBLY CONTACT, SOCKET, SIZE PCB TAIL, .300 REAR EXT, HOT PLUG

SIZE CAGE CODE DRAWING NO RESTRICTED TO

A3 00779 C-1648360 -

SCALE SHEET OF REV A

X-ON Electronics

Largest Supplier of Electrical and Electronic Components

Click to view similar products for [Heavy Duty Power Connectors](#) category:

Click to view products by [TE Connectivity](#) manufacturer:

Other Similar products are found below :

[647757-1](#) [6643411-1](#) [6646058-2](#) [6646137-1](#) [6646138-1](#) [6646479-1](#) [6646608-1](#) [6646786-1](#) [6646940-1](#) [6651091-1](#) [6651525-1](#) [6651529-1](#)
[6651788-1](#) [696475-1](#) [702-32-01109](#) [703-25-02205](#) [73000005059](#) [73000005642](#) [73080255059](#) [73080965046](#) [765-15-0080A](#) [765-16-0080B](#)
[765-18-0080D](#) [829992-1](#) [902-77-02113](#) [PS00/A0620/6300](#) [PS25/A0420/63](#) [129-1J](#) [1409400](#) [AN0024023](#) [E6374G1](#) [e6389g2](#) [157-43GW8](#)
[MS3117-14AC](#) [1643543-1](#) [1650540-1](#) [1651811-2](#) [1766260-1](#) [1766282-1](#) [1766966-1](#) [1791340000](#) [NLDFT-3-BL-L-S120-M40A](#) [NLDFT-N-](#)
[W-L-C240-M40B](#) [NLS-2-R-C240-M40B](#) [NLS-N-W-C240-M40B](#) [NPS-3-BL-T6](#) [1986615-1](#) [2-1589900-8](#) [2199314-1](#) [KA8102](#)