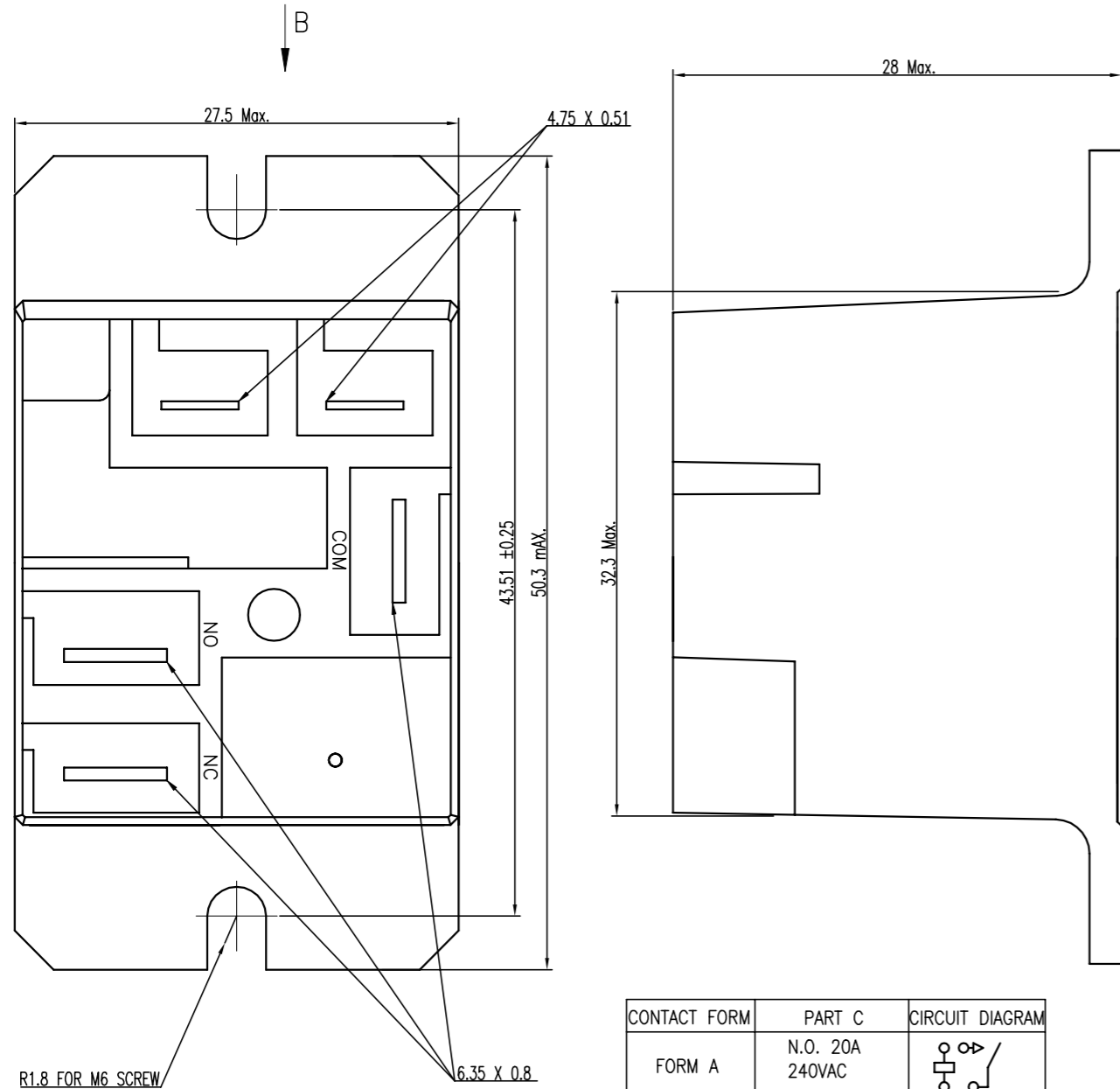


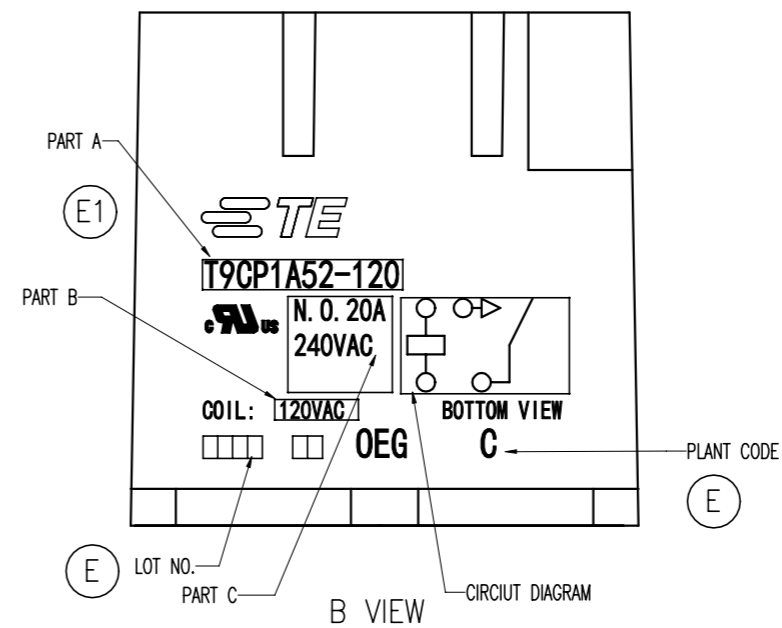
THIS DRAWING IS UNPUBLISHED. RELEASED FOR PUBLICATION  
 © COPYRIGHT - By - ALL RIGHTS RESERVED.

| REVISIONS |     |                              |           |           |
|-----------|-----|------------------------------|-----------|-----------|
| P         | LTR | DESCRIPTION                  | DATE      | APVD      |
|           | E1  | LASER MARKING, ECO-20-010661 | 17AUG2020 | HL.C XN.Z |

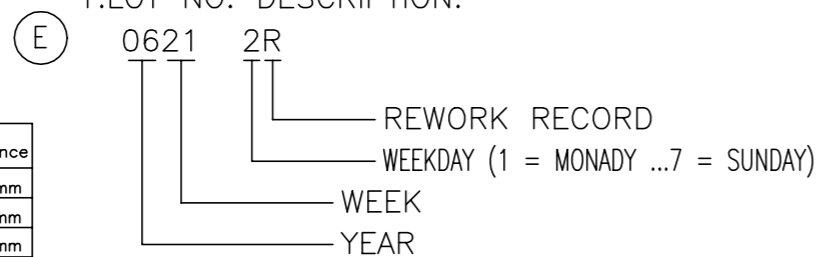


| CONTACT FORM | PART C                         | CIRCUIT DIAGRAM |
|--------------|--------------------------------|-----------------|
| FORM A       | N.O. 20A<br>240VAC             |                 |
| FORM C       | N.O. 20A<br>N.C. 10A<br>240VAC |                 |
| FORM B       | N.C. 10A<br>240VAC             |                 |

| FORM   | PART NO     | TE TYPE NAME    | PART A          | PART B |
|--------|-------------|-----------------|-----------------|--------|
| FORM B | 2-1649341-5 | T9CP2A54-120    | T9CP2A54-120    | 120VAC |
| FORM B | 2-1649341-4 | T9CP2A54-240    | T9CP2A54-240    | 240VAC |
| FORM C | 2-1649341-0 | T9CP5A54-240    | T9CP5A54-240    | 240VAC |
| FORM C | 1-1649341-9 | T9CP5A54-120    | T9CP5A54-120    | 120VAC |
| FORM C | 1-1649341-7 | T9CP5A54-24     | T9CP5A54-24     | 24VAC  |
| FORM C | 1-1649341-5 | T9CP5A52-240    | T9CP5A52-240    | 240VAC |
| FORM C | 1-1649341-4 | T9CP5A52-120    | T9CP5A52-120    | 120VAC |
| FORM C | 1-1649341-2 | T9CP5A52-24     | T9CP5A52-24     | 24VAC  |
| FORM C | 1-1649341-1 | T9CP5A52-12     | T9CP5A52-12     | 12VAC  |
| FORM A | 1649341-2   | T9CP1A54-240    | T9CP1A54-240    | 240VAC |
| FORM A | 1-1649341-0 | T9CP1A54-120    | T9CP1A54-120    | 120VAC |
| FORM A | 1649341-8   | T9CP1A54-24     | T9CP1A54-24     | 24VAC  |
| FORM A | 1649341-6   | T9CP1A52-240    | T9CP1A52-240    | 240VAC |
| FORM A | 1649341-5   | T9CP1A52-120    | T9CP1A52-120    | 120VAC |
| FORM C | 2071170-2   | T9CP5A52-277-01 | T9CP5A52-277-01 | 277VAC |
| FORM C | 2071170-4   | T9CP5A52-120-01 | T9CP5A52-120-01 | 120VAC |
| FORM C | 2071170-5   | T9CP5A52-240-02 | T9CP5A52-240-02 | 240VAC |



NOTE:  
 1. LOT NO. DESCRIPTION:



| Diagram dimension | Tolerance |
|-------------------|-----------|
| 0.99mm max.       | ±0.1mm    |
| 1 - 2.99mm        | ±0.2mm    |
| 3mm min.          | ±0.3mm    |

|   |        |                  |             |                              |                     |
|---|--------|------------------|-------------|------------------------------|---------------------|
| THIS DRAWING IS A CONTROLLED DOCUMENT.                                      |        | DWN              | XN.ZHANG    | TE Connectivity              |                     |
| DIMENSIONS: mm  |        | CHK              | ANTHONY.YIP | NAME                         |                     |
| TOLERANCES UNLESS OTHERWISE SPECIFIED:                                      |        | APVD             | CH.HSU      | PRODUCT SPEC                 |                     |
| 0 PLC ± -<br>1 PLC ± -<br>2 PLC ± -<br>3 PLC ± -<br>4 PLC ± -<br>ANGLES ± - |        | APPLICATION SPEC |             | T9C AC TYPE CUSTOMER DRAWING |                     |
| MATERIAL  | FINISH | WEIGHT           | SIZE        |                              | RESTRICTED TO       |
| -   | -      | -                | A3          | CAGE CODE 00779              | DRAWING NO. 1649341 |
| CUSTOMER DRAWING  |        |                  | SCALE       | SHEET                        | REV                 |
|   |        |                  | 5:2         | 1 OF 1                       | E1                  |

## X-ON Electronics

Largest Supplier of Electrical and Electronic Components

*Click to view similar products for [General Purpose Relays](#) category:*

*Click to view products by [TE Connectivity](#) manufacturer:*

Other Similar products are found below :

[PCN-105D3MH,000](#) [59641F200](#) [LY1SAC110120](#) [5X827E](#) [5X837F](#) [5X840F](#) [5X842F](#) [5X848E](#) [LY2N-AC120](#) [LY2S-AC220/240](#) [LY2-US-AC120](#) [LY3-US-AC120](#) [LY4F-UA-DC12](#) [LY4F-UA-DC24](#) [LY4F-US-AC120](#) [LY4F-US-AC240](#) [LY4F-US-DC24](#) [LY4F-VD-AC110](#) [LYQ20DC12](#) [M115C60](#) [M115N010](#) [M115N0150](#) [6031007G](#) [603-12D](#) [61211T0B4](#) [61212T400](#) [61222Q400](#) [61243B600](#) [61243C500](#) [61243Q400](#) [61311BOA2](#) [61311BOA6](#) [61311BOA8](#) [61311COA2](#) [61311COA1](#) [61311COA6](#) [61311F0A2](#) [61311QOA1](#) [61311QOA4](#) [61311T0D6](#) [61311TOA6](#) [61311TOA7](#) [61311TOB3](#) [61311TOB4](#) [61311U0A6](#) [61312Q600](#) [61312T400](#) [61312T600](#) [61313U200](#) [61313U400](#)