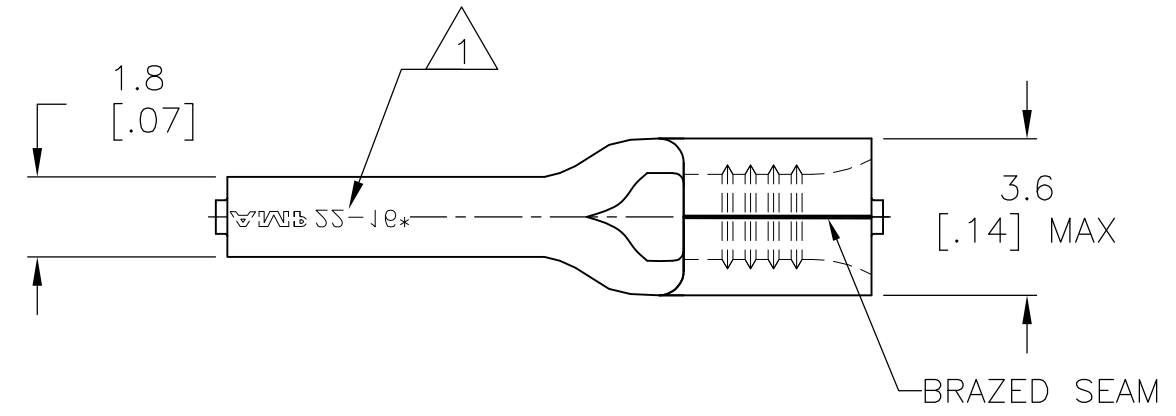


THIS DRAWING IS UNPUBLISHED. RELEASED FOR PUBLICATION  
 © COPYRIGHT - By - ALL RIGHTS RESERVED.

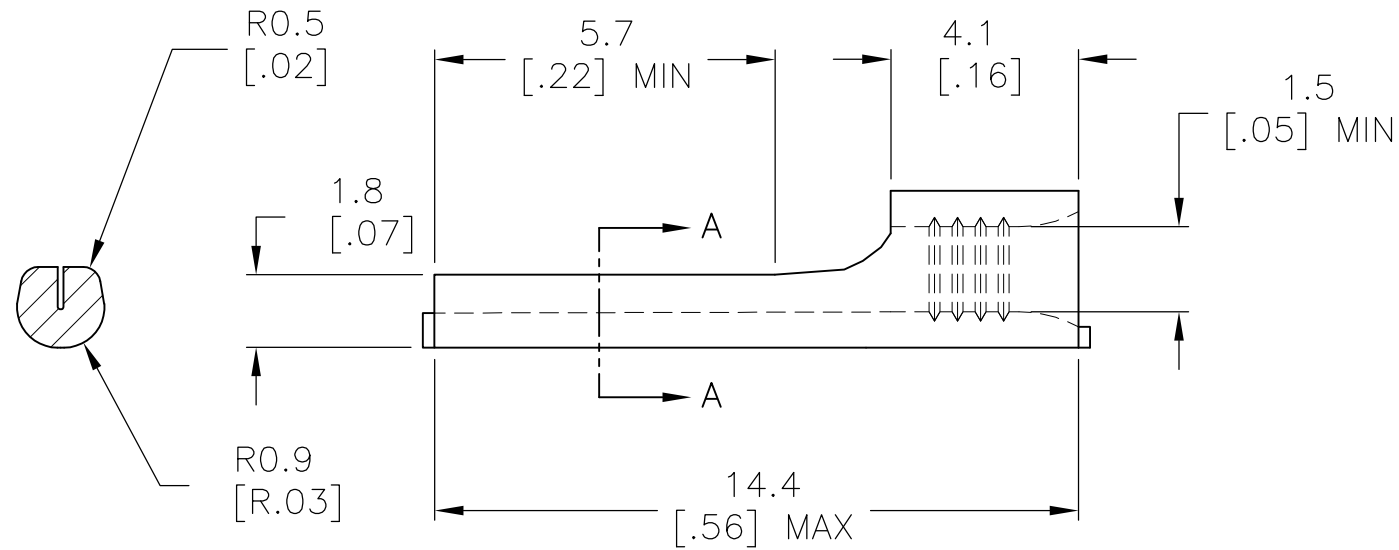
| LOC | DIST | REVISIONS |     |                           |           |     |      |
|-----|------|-----------|-----|---------------------------|-----------|-----|------|
| G   | 86   | P         | LTR | DESCRIPTION               | DATE      | DWN | APVD |
|     |      |           | A1  | REVISED PER ECO-14-003208 | 19MAR2014 | NK  | DR   |

**AMP**  
WIRE RANGE

22-16 AWG  
SOLID OR STRANDED



- 1 STAMP AMP 22-16\* APPROX AS SHOWN
- 2 MAX RECOMMENDED OPERATING TEMPERATURE 170°C [338°F]



SECTION A-A

|      |              |         |
|------|--------------|---------|
| 1000 | LOOSE PIECE  | 165140  |
| QTY  | PACKAGE TYPE | PART NO |

|   |                                   |                                   |   |                    |           |                                    |               |
|---|-----------------------------------|-----------------------------------|---|--------------------|-----------|------------------------------------|---------------|
| THIS DRAWING IS A CONTROLLED DOCUMENT.  |                                   | DWN<br>JR RUTH<br>12AUG10         | <b>TE Connectivity</b><br><br>NAME<br>TERMINAL, WIRE PIN, SOLISTRAND,<br>WIRE SIZE, 22-16 AWG |                    |           |                                    |               |
| DIMENSIONS:<br>mm [INCHES]  |                                   | CHK<br>TOM MICHIELUTTI<br>12AUG10 |   |                    |           | APVD<br>TOM MICHIELUTTI<br>12AUG10 | RESTRICTED TO |
| TOLERANCES UNLESS OTHERWISE SPECIFIED:  |                                   | PRODUCT SPEC                      |   |                    |           | APPLICATION SPEC                   | SIZE          |
| 0 PLC ± -<br>1 PLC ± 0.20 [.007]<br>2 PLC ± -<br>3 PLC ± -<br>4 PLC ± -<br>ANGLES ± - |                                   | WEIGHT                            |   |                    |           | —                                  | CAGE CODE     |
| MATERIAL<br>COPPER PER ASTM B152  | FINISH<br>TIN PLATE PER ASTM B545 | DRAWING NO<br>A3 00779 C-165140   |   | RESTRICTED TO<br>— |           |                                    |               |
| CUSTOMER DRAWING  |                                   |                                   | SCALE<br>6:1  | SHEET<br>1 OF 1    | REV<br>A1 |                                    |               |

## X-ON Electronics

Largest Supplier of Electrical and Electronic Components

*Click to view similar products for [Terminals](#) category:*

*Click to view products by [TE Connectivity](#) manufacturer:*

Other Similar products are found below :

[00-054007-01074-6](#) [00-054007-70206-1](#) [00-054007-70210-8](#) [00-054007-70217-7](#) [00-054007-70226-9](#) [00-054007-70228-3](#) [00-054007-70248-1](#) [00-054007-70256-6](#) [00-054007-70301-3](#) [00-054007-70316-7](#) [00-054007-49560-4](#) [00-054007-70209-2](#) [00-054007-70225-2](#) [00-054007-70227-6](#) [00-054007-70231-3](#) [00-054007-70241-2](#) [00-054007-70242-9](#) [00-054007-70244-3](#) [00-054007-70246-7](#) [00-054007-70263-4](#) [00-054007-70288-7](#) [00-054007-70290-0](#) [00-054007-70300-6](#) [00-054007-70304-4](#) [01-2065-1-0216](#) [01-2900-1-04412](#) [00581P0075](#) [600TS-10](#) [60205-1](#) [604200-1](#) [605601-1](#) [60598-1-CUT-TAPE](#) [61314-6-C](#) [61810-3](#) [61-S](#) [61-SN](#) [626-0194](#) [62-NBM-A](#) [62-SN](#) [62-SP](#) [63-S](#) [640179-1](#) [M55155/059I03](#) [M55155/079C01](#) [M55155/099H02](#) [M55155/109H01](#) [M55155/109H02](#) [M55155/12XH05](#) [M55155/16XH02](#) [M55155/29-5S](#)