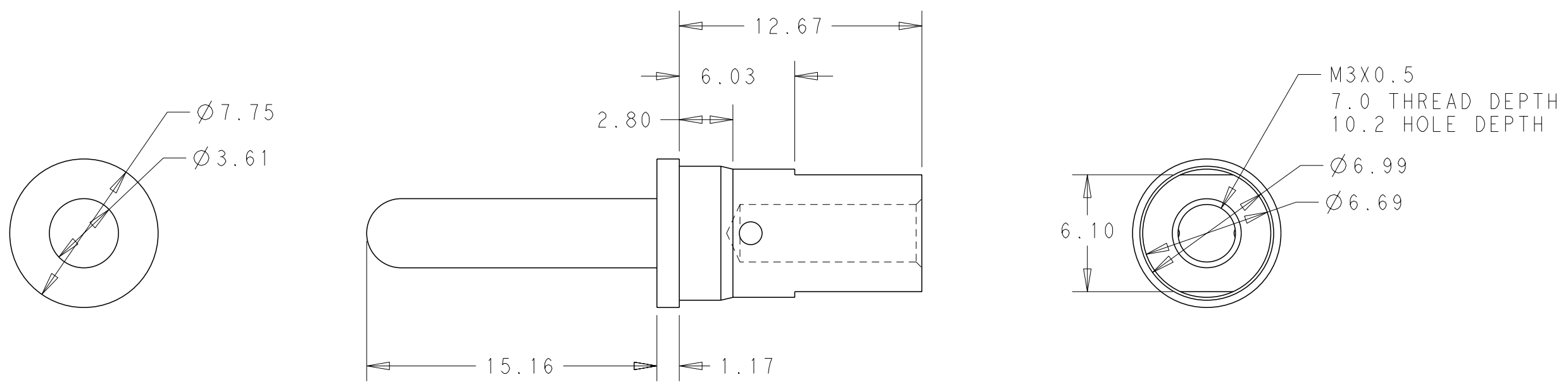


THIS DRAWING IS UNPUBLISHED. RELEASED FOR PUBLICATION 20
 © COPYRIGHT 20 TE ALL RIGHTS RESERVED.

| LOC | DIST | REVISIONS | | | |
|-----|------|-------------|-----------------|-----------|-------|
| P | LTR | DESCRIPTION | DATE | DWN | APVD |
| GP | 00 | 1 | INITIAL EDITION | 19JUL2016 | RS SZ |
| | | | | | |
| | | | | | |



1 MATERIAL:
COPPER ALLOY

2 FINISH:
PERFORMANCE BASED PLATING.

3. ITEMS PROVIDED TO THIS SPECIFICATION TO BE PERMANENTLY IDENTIFIED ON THE CONTAINER PER THE FOLLOWING IDENTIFIER:

PART NO. AND MANUFACTURING DATE CODE

1651904-1
PART NO.

| | | | | | |
|---|---|------------------|-----------|---------------|--|
| THIS DRAWING IS A CONTROLLED DOCUMENT. | | DWN | 19JUL2016 | | |
| DIMENSIONS: MM | | CHK | 19JUL2016 | | |
| | | APVD | 19JUL2016 | | |
| TOLERANCES UNLESS OTHERWISE SPECIFIED: 0 PLC ±- 1 PLC ±0.50 2 PLC ±0.25 3 PLC ±- 4 PLC ±- ANGLES ±- | | PRODUCT SPEC | 108-64019 | | |
| MATERIAL | - | FINISH | - | NAME | PIN CONTACT, SIZE No.8, M3 X 0.5THD, REMOVABLE |
| | | APPLICATION SPEC | 114-64005 | SIZE | A3 |
| | | WEIGHT | - | CAGE CODE | C-1651904 |
| | | CUSTOMER DRAWING | | DRAWING NO | C-1651904 |
| | | SCALE | 4:1 | RESTRICTED TO | - |
| | | SHEET | 1 OF 1 | REV | 1 |

X-ON Electronics

Largest Supplier of Electrical and Electronic Components

Click to view similar products for [Pin & Socket Connectors](#) category:

Click to view products by [TE Connectivity](#) manufacturer:

Other Similar products are found below :

[6450822-1](#) [770392-1](#) [794042-1](#) [796885-1](#) [8-794535-1](#) [PLR3455ACS-222](#) [R929991004](#) [R929993003](#) [1403611-1](#) [1-480349-5](#) [152302-5](#)
[153211-2](#) [1586092-1](#) [1586129-1](#) [1586681-4](#) [1586700-1](#) [1586368-1](#) [1586380-1](#) [1586616-1](#) [1586680-5](#) [16-06-0038](#) [164164-5](#) [1-6609930-1](#)
[172296-1](#) [19-09-2035](#) [200503-1](#) [200788-2](#) [2029090-4](#) [2029095-4](#) [925061-7](#) [293734-4](#) [293737-2](#) [1-765362-4](#) [1871534-1](#) [200833-4](#)
[2008625-2](#) [2029027-2](#) [2029096-4](#) [R929991000](#) [R929991002](#) [R929993000](#) [319-10-101-00-005000](#) [319-10-102-00-001000](#) [319-10-104-00-001000](#) [319-10-105-00-001000](#) [319-10-108-00-001000](#) [319-10-112-00-006000](#) [39-01-8019](#) [319-10-101-00-001000](#) [319-10-102-00-005000](#)