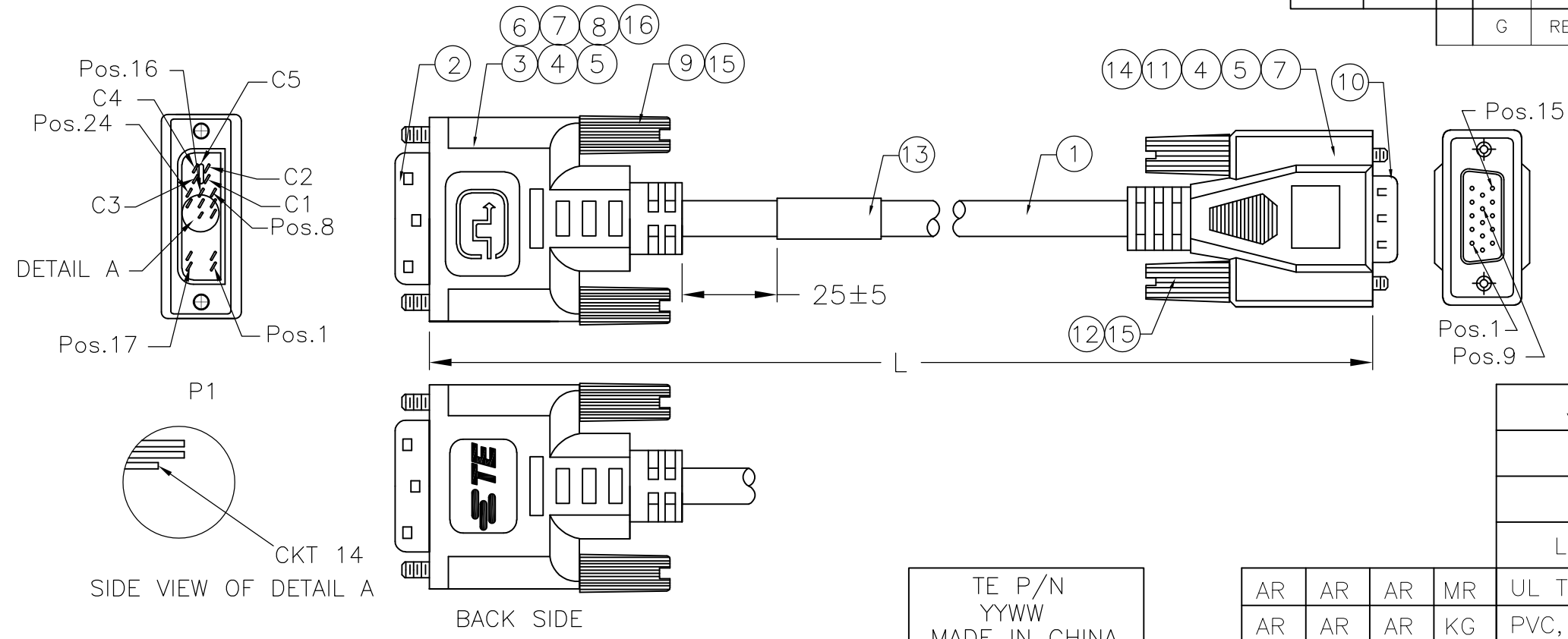


THIS DRAWING IS UNPUBLISHED. RELEASED FOR PUBLICATION
 © COPYRIGHT - By - ALL RIGHTS RESERVED.

LOC	DIST	REVISIONS					
GP	00	P	LTR	DESCRIPTION	DATE	DWN	APVD
		G		REVISED PER ECO-13-001881	02APR2013	LJC	T.T



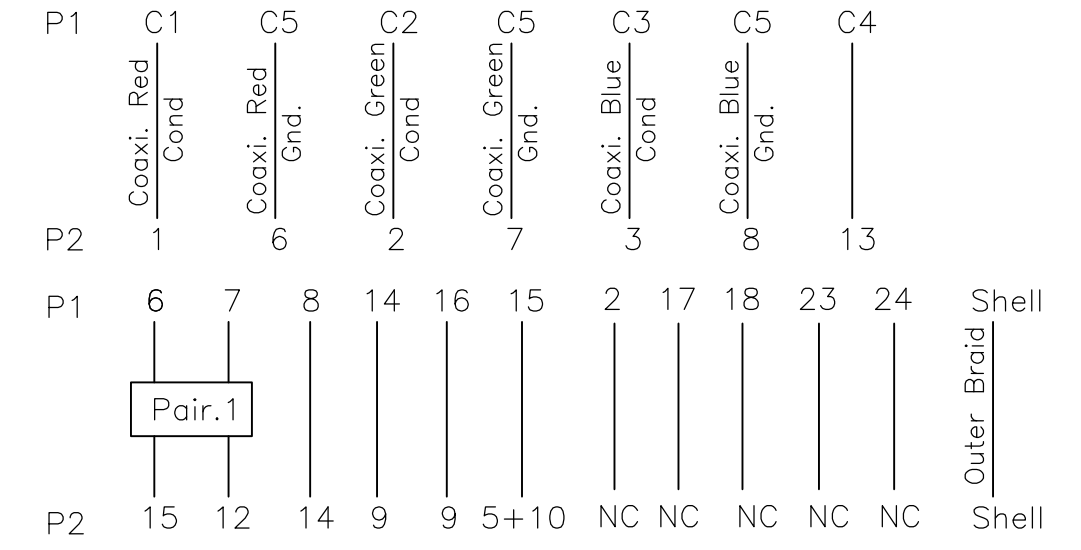
3000±80		1653932-3
2000±60		1653932-2
1000±30		1653932-1
LENGTH(L)	CUSTOMER P/N	TE P/N

AR	AR	AR	MR	UL TAPE, BLACK	16
AR	AR	AR	KG	PVC, Shore A 95±3, Color: White (WH03).	15
AR	AR	AR	MR	Copper Foil, W: 30mm.	14
1	1	1	PC	Label, Size: 25.0*35.0, White: 25.0*13.0mm.	13
2	2	2	PC	#4-40 Screw, L=43mm	12
AR	AR	AR	KG	Inner Molded PE	11
1	1	1	PC	HDDB15, Male, Solder Type, Contact: Gold Flash	10
2	2	2	PC	DVI #4-40 3*45mm Thumbscrew.	9
AR	AR	AR	MR	Copper Foil, W:8mm.	8
AR	AR	AR	KG	PVC, Shore A 90±3, Color: White (WH03).	7
AR	AR	AR	g	Solder Wire	6
AR	AR	AR	MR	Heat Shrink Tubing, OD:2.5mm, Color: Black.	5
AR	AR	AR	MR	Heat Shrink Tubing, OD:1.5mm, Color: Black.	4
1	1	1	PC	Metal Can For DVI Connector, Meet OD: 7.4mm	3
1	1	1	PC	DVI-A Connector, Gold Flash	2
AR	AR	AR	MR	UL20276 30AWG*3Coax.+28AWG*1Pair +28AWG*5C+Al/Mylar+Braid, Color: Black(BK01)	1
-3	-2	-1	U/M	DESCRIPTION	ITEM

NOTES:

- CABLE SHALL BE TESTED WITH AUTOMATED TEST EQUIPMENT FOR THE FOLLOWING:
 A. CONNECTION RESISTANCE SHALL NOT EXCEED 1.8 OHMS.
 B. INSULATION RESISTANCE 100 MEGOHMS, MIN.
 C. HIPOT-300 VOLTS AT 0.01 SEC.
- CABLE ASSEMBLY MUST PASS DVI 1.0 SPECIFICATION.
- DIRECTIVE 2002/95/EC COMPLIANT.
- 100% DISPLAY-SCREEN FUNCTIONAL TESTING

PIN ASSIGNMENT :



THIS DRAWING IS A CONTROLLED DOCUMENT.

DWN: JURY LIU 22JAN03
 CHK: MONTGOMERY, JOHN D 15JUN04
 APVD: MONTGOMERY, JOHN D 15JUN04

NAME: DVI-A TO VGA CABLE ASSEMBLY

PRODUCT SPEC: -
 APPLICATION SPEC: -
 MATERIAL: -
 FINISH: -
 WEIGHT: -

SCALE: N.T.S. SHEET: 1 OF 1 REV: G

CUSTOMER DRAWING

RESTRICTED TO: -

X-ON Electronics

Largest Supplier of Electrical and Electronic Components

Click to view similar products for [Audio Cables](#) / [Video Cables](#) / [RCA Cables](#) category:

Click to view products by [TE Connectivity](#) manufacturer:

Other Similar products are found below :

[59384500100E](#) [RCA10RCA](#) [DB25M05DB25MY](#) [DB25M10DB25MY](#) [DB25M10XLRMXLRFY](#) [1-3737-600-3216](#) [15AK25X](#) [CA19](#) [CA20](#)
[CAG34](#) [25FK25](#) [LF3BLX](#) [30-513](#) [28-511-0](#) [30-419](#) [30AR30](#) [30AK30](#) [30AN30](#) [RCA05RCA](#) [RCA05RCAB](#) [RCA05TS](#) [RCA10RCAB](#)
[420001400-3](#) [426058900-3](#) [427493000-3](#) [49152A-010-S2](#) [TT6RX](#) [TT7BKX](#) [TT93602](#) [32-3766](#) [32HR07284X](#) [CA25B](#) [CA39](#)
[DB25M02XLRMXLRFY](#) [LF1BKX](#) [LF3RX](#) [49442 010S2](#) [DVI-I-VGA/DVI-D-CBL-MATRIX](#) [VMP3YX](#) [VMP2YX](#) [TT746](#) [TT744](#) [CN13B](#)
[MDC4P13](#) [MDC8P53](#) [LF4GNX](#) [LF2GYX](#) [426494200-3](#) [49153A 010S2](#) [LF1RX](#)