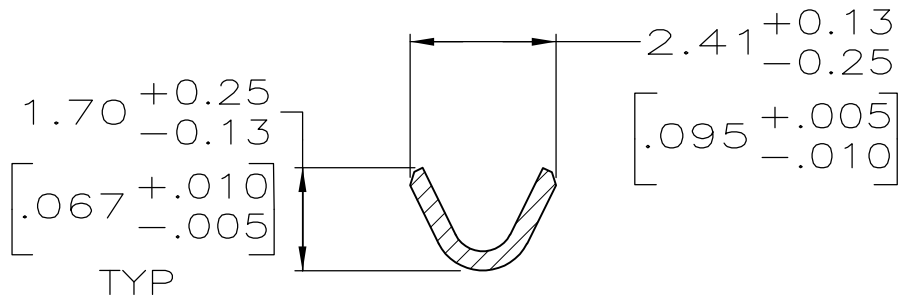
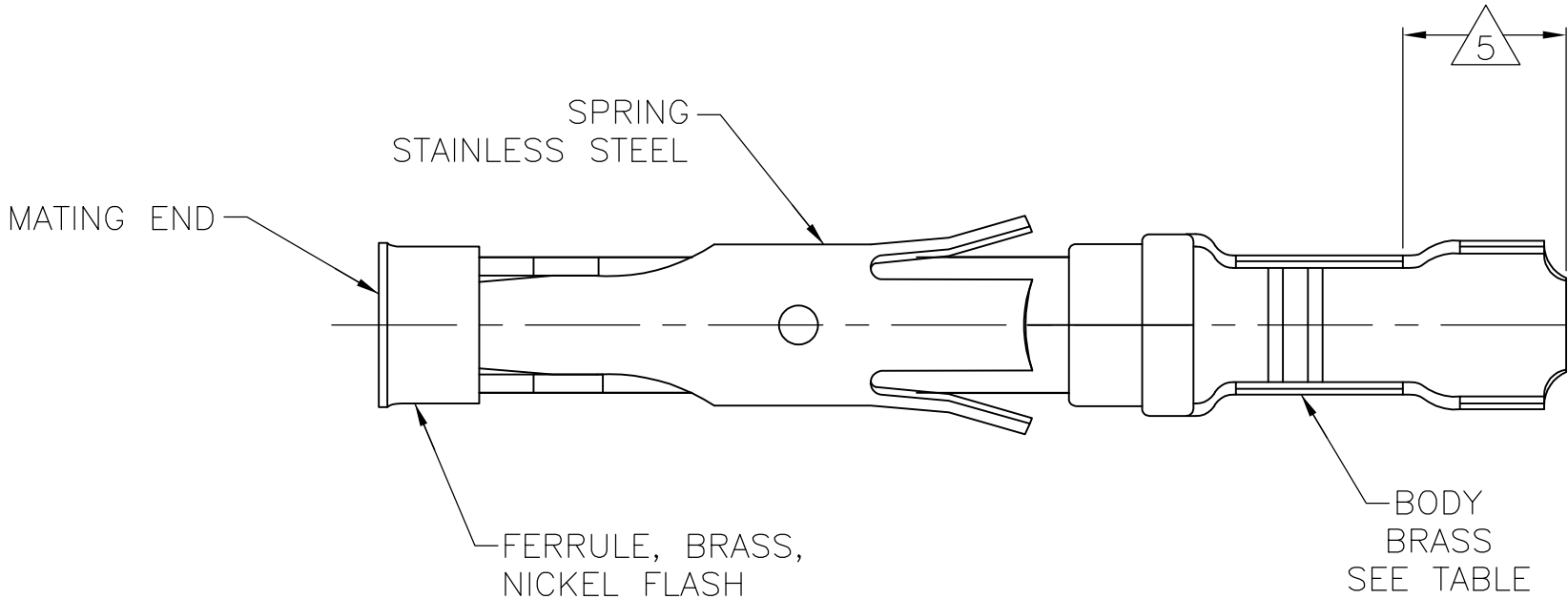
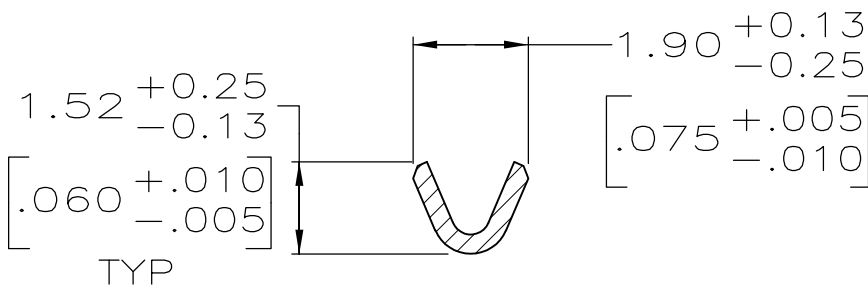
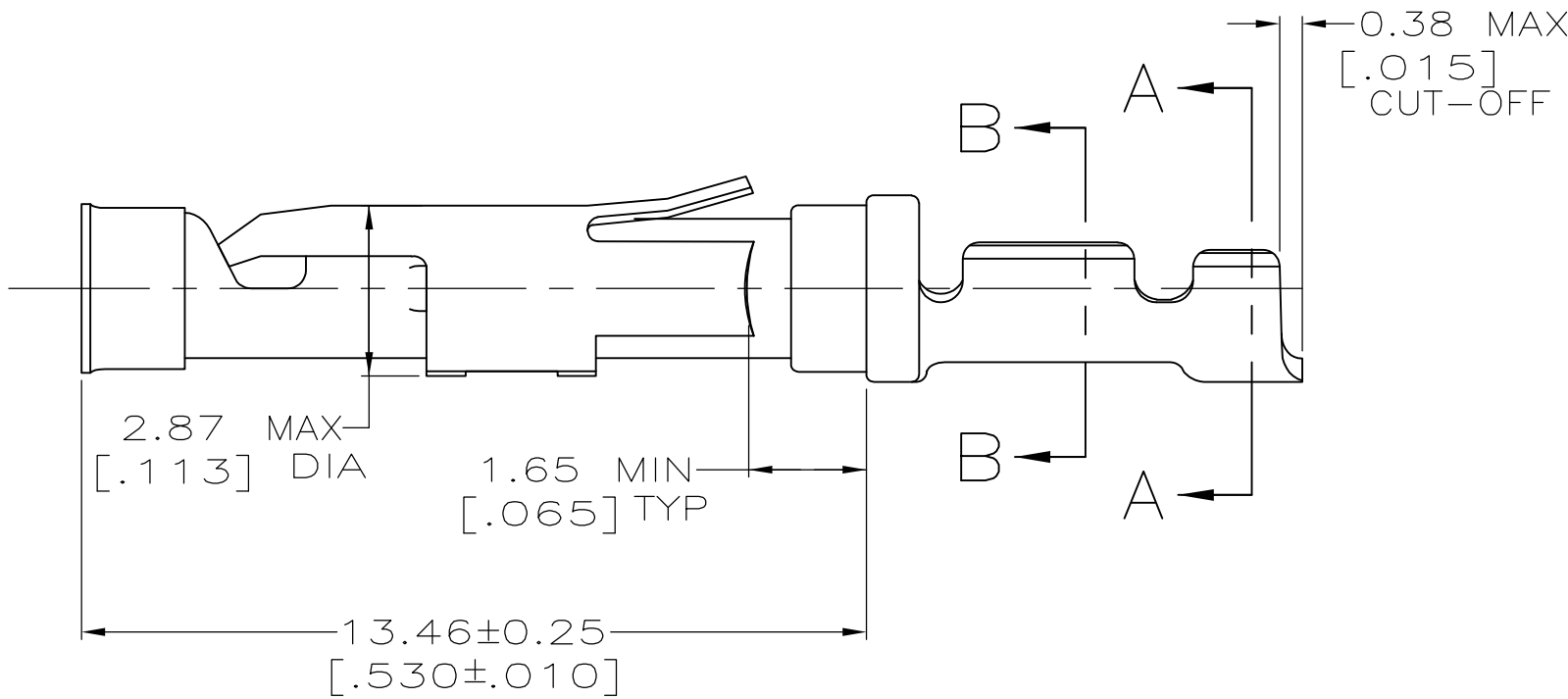
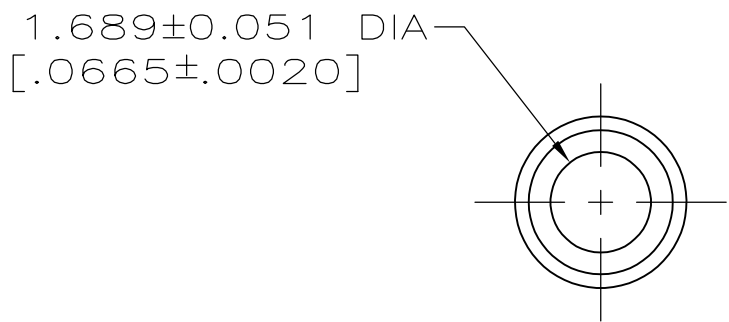


LOC	DIST	REVISIONS					
		P	LTR	DESCRIPTION	DATE	DWN	APVD
FT	47		E1	REVISED PER ECO-14-001124	24JAN2014	NK	MZ




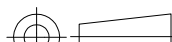
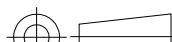
SECTION A-A



SECTION B-B

- 1
- 0.76μm [.000030] MIN GOLD PER MIL-G-45204 ON MATING END FOR A LENGTH OF 5.08 [.200] MIN WITH 1.27μm [.000050] MIN MATTE TIN PLATE IN WIRE CRIMP AREA, BOTH OVER 0.76μm [.000030] MIN NICKEL PER QQ-N-290.
- 2
- 1.27μm [.000050] MIN TIN-LEAD PER MIL-T-10727 OVER 0.76μm [.000030] MIN NICKEL PER QQ-N-290.
- 3
- 0.76μm [.000030] MIN GOLD PER MIL-G-45204 ON MATING END FOR A LENGTH OF 5.08 [.200] MIN WITH A UNIFORM GRADIENT TO 0.25μm [.000010] MIN GOLD PER MIL-G-45204 ON THE REMAINDER OVER 0.76μm [.000030] MIN NICKEL PER QQ-N-290.
- 4
- 0.38μm [.000015] MIN GOLD PER MIL-G-45204 ON MATING END FOR A LENGTH OF 5.08 [.200] MIN WITH 1.27μm [.000050] MIN MATTE TIN PLATE IN WIRE CRIMP AREA, BOTH OVER 0.76μm [.000030] MIN NICKEL PER QQ-N-290.
- 5
- GOLD PLATING NOT REQUIRED IN THIS AREA.
- 6
- WIRE RANGE 26-24 AWG.  
INSULATION RANGE 0.89 [.035]-1.40 [.055].
- 7
- 0.38μm [.000015] MIN GOLD PER MIL-G-45204 ON MATING END FOR A LENGTH OF 5.08 [.200] MIN, 1.27μm [.000050] MIN TIN-LEAD PER MIL-T-10727 FOR A LENGTH OF 5.69 [.224] MIN ON OPPOSITE END, BOTH OVER 1.27μm [.000050] MIN NICKEL PER QQ-N-290 ON ENTIRE CONTACT.
- 8
- 1.27μm [.000050] MIN TIN PER MIL-T-10727 OVER 0.76μm [.000030] MIN NICKEL PER QQ-N-290.
- 9
- OBSOLETE PARTS: OBSOLETE CIS STREAMLINING PER D.RENAUD/D.SINISI

9	OBSOLETE	SMALL PACK	8	1-66108-5 OR 1-66108-7	1-66109-8
		STANDARD	8	1-66108-5 OR 1-66108-7	1-66109-7
		SMALL PACK	1	66108-4	1-66109-6
		SMALL PACK	2	66108-2	1-66109-5
		SMALL PACK	3	66108-1	1-66109-4
		STANDARD	7	1-66108-4	1-66109-3
		STANDARD	1	66108-4	66109-4
		STANDARD	4	66108-3	66109-3
		STANDARD	2	66108-2	66109-2
9	OBSOLETE	STANDARD	3	66108-1	66109-1
		PACKAGING TYPE	BODY FINISH	STRIP P/N REF	PART NO

THIS DRAWING IS A CONTROLLED DOCUMENT.		DWN L.SIPE 06/02/92		 TE Connectivity	
DIMENSIONS: mm [INCHES]		CHK W.LENKER 6-11-92			
	TOLERANCES UNLESS OTHERWISE SPECIFIED:		APVD G.STEINHAUER 7-8-92		NAME  SOCKET ASSEMBLY, LOOSE PIECE, TYPE III+
	0 PLC ± -		PRODUCT SPEC		
	1 PLC ± -		—		
	2 PLC ± 0.13 [.005]		APPLICATION SPEC		
	3 PLC ± -		—		SIZE CAGE CODE DRAWING NO RESTRICTED TO
	4 PLC ± -		—		
	ANGLES ± -		—		
	FINISH		WEIGHT		
MATERIAL		SEE CALLOUTS		A2 00779 C=66109	
SEE CALLOUTS		SEE CALLOUTS		CUSTOMER DRAWING	
				SCALE 8:1 SHEET 1 of 1 REV E1	

## X-ON Electronics

Largest Supplier of Electrical and Electronic Components

*Click to view similar products for [Standard Circular Contacts](#) category:*

*Click to view products by [TE Connectivity](#) manufacturer:*

Other Similar products are found below :

[RC16M23J](#) [133780-1](#) [RM20M13D28](#) [RM24M9D28](#) [RMMX110-1D28](#) [MS3474W10-6P L/C](#) [ELVP16100E](#) [164-901-CD](#) [EN3545007SCE](#)  
[BV002BSQ20049CZ](#) [BV002SSQ160404CZ](#) [1900ND05S1B00B](#) [166566-1](#) [1900ND04S1X00D](#) [ST-JL05-16S-C3-100](#) [ST-JL05-20S-C1-100](#)  
[ST-JL05-20S-C2-100](#) [T01-CRIMP-S03](#) [APK-SA16A07-002](#) [27963-15T12](#) [CONT-JL05-08S-C2-10](#) [CONT-JL05-12S-C1-10](#) [RC16M-23T](#)  
[RFD26L-1D28](#) [BV002ASJ16049CW](#) [33505815019](#) [JN1-22-20S-R-PKG100](#) [031-50213](#) [031-50565](#) [031-50794](#) [ELFH08251](#) [ELFP0641GE](#)  
[SJS861301M](#) [ST-JL05-16S-C1-100](#) [ST-JL05-20P-C1-100](#) [82911466K](#) [ESLM03200](#) [192991-0087](#) [192900-0570](#) [ELFH07251](#) [44-100-1414P-](#)  
[1000-101](#) [T3P16FC3LZ](#) [ST-JL05-16S-C2-3500](#) [ZP-4016-10NF](#) [CONT-JL05-12P-C1-10](#) [RM20M12G8D28](#) [031-50676](#) [12115010110](#)  
[RJFTVC2MG](#) [CAP-DACMDPC2](#)