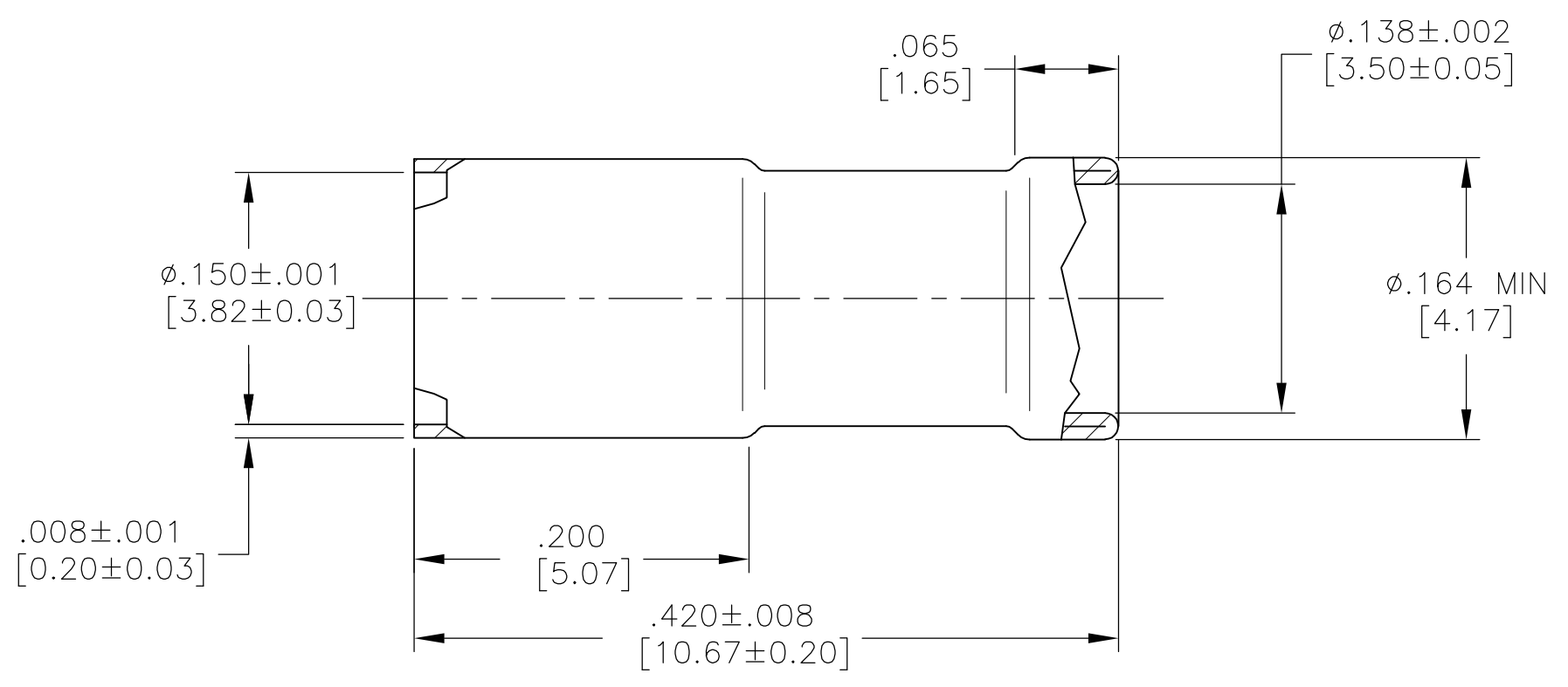


THIS DRAWING IS UNPUBLISHED. RELEASED FOR PUBLICATION  
 © COPYRIGHT - By - ALL RIGHTS RESERVED.

LOC		DIST		REVISIONS			
P	LTR	DESCRIPTION		DATE	DWN	APVD	
	A	RELEASED		11-4-14	CT	DW	

1. MATERIAL: COPPER PER ASTM B152.
2. FINISH: SILVER PLATED PER ASTM B700, 200µin MIN.



1663264-1  
 PART NO.

THIS DRAWING IS A CONTROLLED DOCUMENT.		DWN	C.C.THOMAS	11-4-14	<b>STE</b> TE Connectivity			
DIMENSIONS: INCHES [mm]		CHK	D.WILSON	11-4-14				
TOLERANCES UNLESS OTHERWISE SPECIFIED:		APVD	D.WILSON	11-4-14	NAME FERRULE			
0 PLC ± -		PRODUCT SPEC			-			
1 PLC ± -		APPLICATION SPEC			-			
2 PLC ± -		SIZE	A3	CAGE CODE	00779	DRAWING NO	C-1663264	
3 PLC ± .005 [0.13]		WEIGHT			-			
4 PLC ± -		CUSTOMER DRAWING			SCALE	10:1	SHEET	1 OF 1
ANGLES ± -		FINISH			-			
MATERIAL		-			RESTRICTED TO			
-		-			REV			
-		-			A			

## X-ON Electronics

Largest Supplier of Electrical and Electronic Components

*Click to view similar products for [TE Connectivity](#) manufacturer:*

Other Similar products are found below :

[017667013](#) [DMC-MD 26 B](#) [D38999/26FG41HA](#) [D38999/26FG41HN-LC](#) [D38999/26GG41PC-LC](#) [D38999/26GG41PN-LC](#)  
[D38999/26WG41AC](#) [D38999/26WG41HC](#) [DTS24Z21-39HN](#) [DTS24Z21-41HN](#) [MS27467T21F11J](#) [MS27467T21F16H-LC](#)  
[MS27467T21F35H](#) [DTS26W21-41HC-LC](#) [DTS26W21-41AC](#) [DTS26F21-41HC-LC](#) [DTS26F21-41HC](#) [DTS26F21-41AC](#) [DTS26F21-39HC](#)  
[DTS26W21-41PC-LC](#) [DTS26W21-39HC](#) [DTS26F21-41PC-LC](#) [BACC63CM2842PNA](#) [569875-2](#) [1546693-1](#) [6EL1SCM](#) [KUP93-14A13-120](#)  
[1599027-1](#) [2052-1618-02](#) [4000-04AW18K999](#) [3-1571586-0](#) [CB10LH103M](#) [CB10LV474M](#) [8-917542-2](#) [894645-000](#) [PCH-124D2MH,000](#)  
[568176-6](#) [5-690482-4](#) [570831-000](#) [5745438-3](#) [5745652-2](#) [CRB-48-70180](#) [5767006-7](#) [58061-1](#) [58082-1](#) [58113-5](#) [58284-1](#) [582843-6](#) [58380-](#)  
[2](#) [58425-3](#)