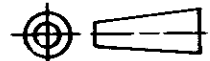


DO NOT SCALE

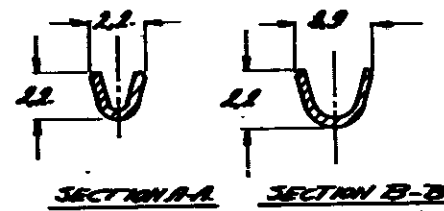
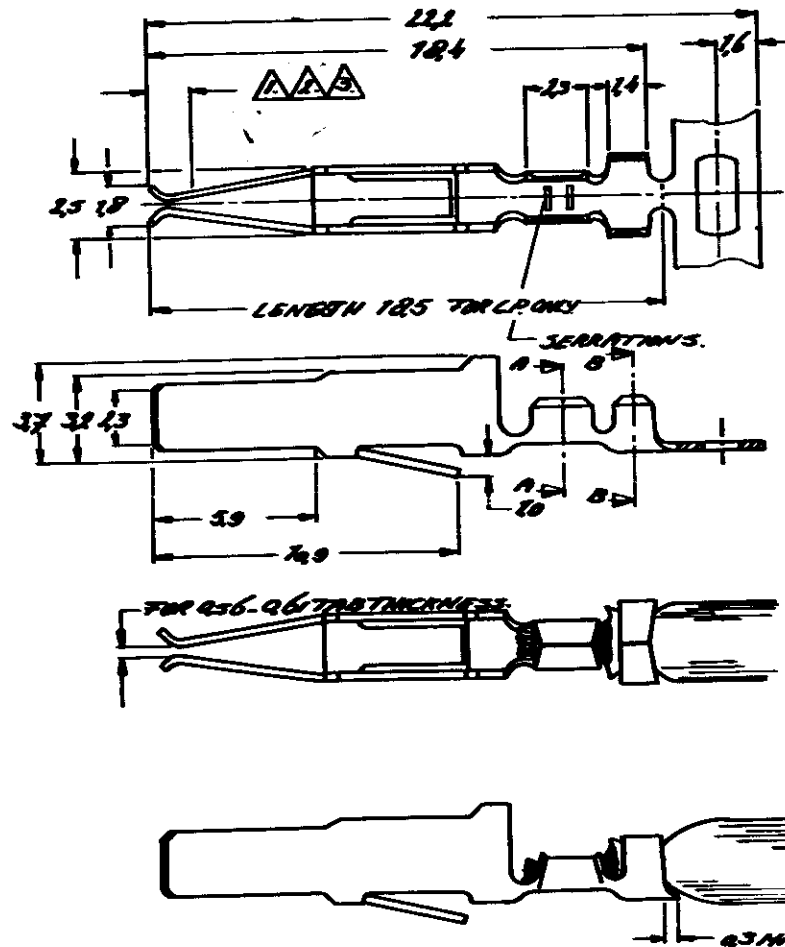
DIMENSIONS IN mm

METRIC

THIRD ANGLE PROJECTION



LTR	REVISION RECORD	DATE	DWN	APVD
D	REVISED PER ECO-15-005333	08JUL2015	AP	RP



FOR REFERENCE ONLY
WILL NOT BE UP - DATED

- NOTES:**
- ▲ EIC 60603-2 PERFORMANCE LEVEL I OVER 1.25µm NICKEL, REMAINDER 1.25µm NICKEL.
 - ▲ EIC 60603-2 PERFORMANCE LEVEL II OVER 1.25µm NICKEL, REMAINDER 1.25µm NICKEL.
 - ▲ EIC 60603-2 PERFORMANCE LEVEL III OVER 1.25µm NICKEL, REMAINDER 1.25µm NICKEL.

16632-3.	SEE NOTE A	R.H. BRONZE	16646-4.
16632-2.	SEE NOTE A	R.H. BRONZE	16646-3.
16632-1.	SEE NOTE A	R.H. BRONZE	16646-2.
LOOSE PIECE.	FINISH	MATERIAL	PART NUMBER
CUSTOMER DRAWING		STE TE Connectivity	
FOR REFERENCE ONLY WILL NOT BE UPDATED		THIS DRAWING IS UNPUBLISHED / RELEASED FOR PUBLICATION	
© COPYRIGHT IS ALL INTERNATIONAL RIGHTS RESERVED. AMP PRODUCTS MAY BE COVERED BY U.S. AND FOREIGN PATENTS AND/OR PATE. ITS PENDING.		BY AMP-HOLLAND B.V.	
DR. <i>TR. Huisman 12-3-83</i>	WIRE RANGE 0.8-0.5 mm	NAME CRIMP ON / SNAP-IN	REV. DATE D M Y
CHK. <i>[Signature]</i>	WIRE RANGE 0.8-1.0 mm	TAB RECEPTACLE STRIP	A 05 83
REV. <i>[Signature]</i>	SIZE AS	SHEET 1 OF 1	REV. LTR. D
		DRAWING NO C-166460-E	

8 7 6 5 4 3 2 1

X-ON Electronics

Largest Supplier of Electrical and Electronic Components

Click to view similar products for [DIN 41612 Connectors](#) category:

Click to view products by [TE Connectivity](#) manufacturer:

Other Similar products are found below :

[004.767](#) [608489050008049](#) [691327-1](#) [74670-0732](#) [74680-0340](#) [75880-0015](#) [76453-0014](#) [86093159ALF](#) [9732967801](#) [QLC260R](#)
[120X10019X](#) [120X10089X](#) [122A10249X](#) [122A11089X](#) [122A13089X](#) [122A10089X](#) [122A10129X](#) [122A10349X](#) [122A13359X](#) [1377391-4](#)
[DIN-048CPC-SR1-MH](#) [1393583-2](#) [1393726-7](#) [140X10129X](#) [143-1913-000](#) [143-1908-000](#) [1484472-1](#) [2110070-1](#) [2110070-2](#) [CBC20T00-](#)
[008FDS5-0-1-002VR](#) [172699-5036](#) [2-1393557-4](#) [2-1437084-2](#) [394506](#) [419-2080-402](#) [V42254B2202C968](#) [419-2086-201](#) [419-2087-002](#)
[448657-1](#) [448847-3](#) [5-1393755-9](#) [02990000004](#) [054302](#) [043556](#) [09062483201750](#) [0850033067](#) [09031646555](#) [09061486901840](#)
[09185107324800](#) [102A10019X](#)