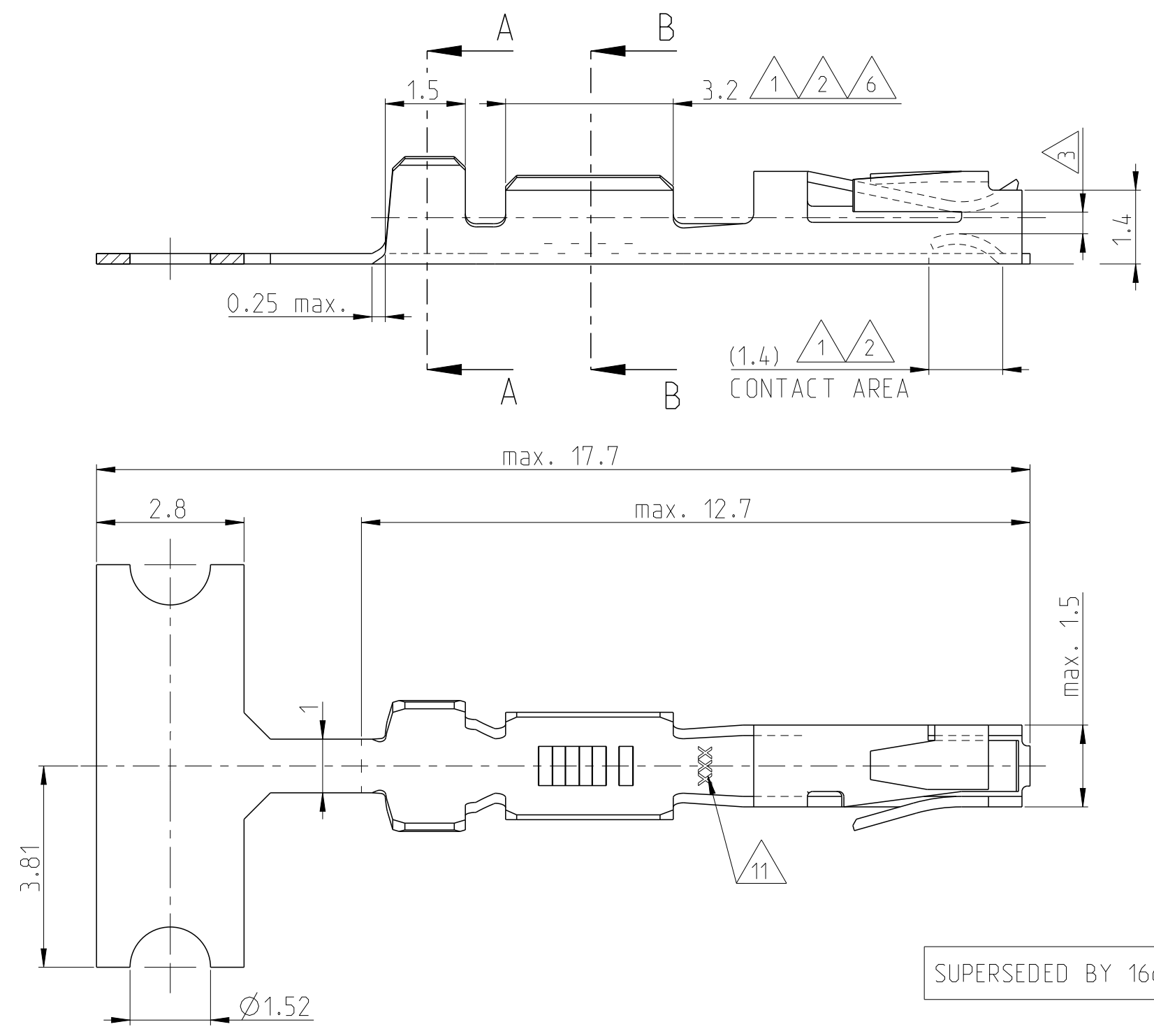


THIS DRAWING IS UNPUBLISHED. RELEASED FOR PUBLICATION 20
 © COPYRIGHT - BY - ALL RIGHTS RESERVED.

| REVISIONS | | | | | |
|-----------|-----|---|------------|------|------|
| P | LTR | DESCRIPTION | DATE | DWN | APVD |
| Z1 | | REVISED PER ECO-11-005150 | 21MAR2011 | RK | HMR |
| Z2 | | NEW DRAWING CREATED IN CREO | 26JUNE2014 | JBH | BRUN |
| Z3 | | NOTE 8 MODIFIED | 18NOV2015 | MAH. | BRUN |
| Z4 | | TOLERANCES ADDED AT SECTION A-A AND B-B | 21JAN2016 | MAH. | BRUN |

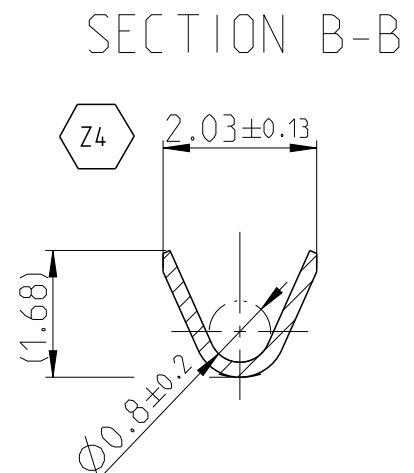
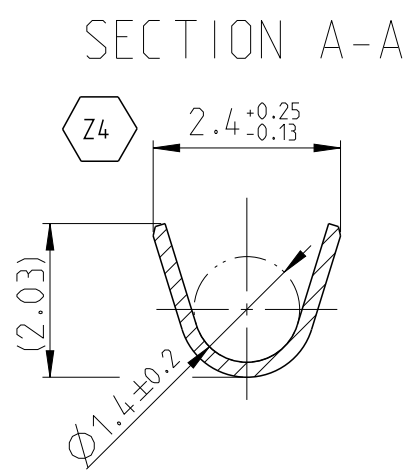


- NOTES:
- 1 UNDERCOATING: 0.8 μm NICKEL OVERALL
CONTACT AREA: 0.8 μm GOLD
CRIMP AREA: GOLDFLASH
 - 2 UNDERCOATING: 0.8 μm NICKEL OVERALL
CONTACT AREA: 1.25 μm GOLD
CRIMP AREA: GOLDFLASH
 - 3 SUITABLE FOR 0.64x0.64 POST
 - 6 UNDERCOATING: 0.8 μm NICKEL OVERALL
CONTACT AREA: 0.4 μm GOLD
CRIMP AREA: GOLDFLASH
 - 7 ADVANCED PROD. NRS. FOR DIN 41612 PART 5 SPEC
 - 8 PLATING: 2.0 μm TIN OVER MIN. 0.5 μm Ni OVERALL
 - 9 REVERSE REELED FOR USE WITH MINI APPLICATOR.
 - 10 STANDARD REELED FOR USE WITH STANDARD APPLICATOR.
 - 11 TRADE MARK.

WIRE RANGE:
20-24 (26) AWG
INSULATION RANGE:
1.40 MAX DIA.

SUPERSEDED BY 166500-2

| | | | | | |
|--------------------|---------|----------------|------------|-------------|-----|
| 166722-1 | 1 | PHOSPHORBRONZE | 1-166500-2 | 10 | Z |
| 166722-6 | 8 | | 1-166500-1 | 10 | Z |
| 166722-6 | 8 | | 166500-9 | 9 | Z |
| 166722-4 | 6 | | 166500-7 | 9 | W |
| 166722-2 | 2 | | 166500-4 | 9 | Z |
| 166722-1 | 1 | | 166500-2 | 9 | Z |
| LOOSE PIECE NUMBER | PLATING | | MATERIAL | STRIPNUMBER | REV |



THIS DRAWING IS A CONTROLLED DOCUMENT.

| DIMENSIONS: | TOLERANCES UNLESS OTHERWISE SPECIFIED: |
|-------------|--|
| mm | n. ISO 8015 n. ISO 2768-mH |
| | 0 PLC ± |
| | 1 PLC ±0.2 |
| | 2 PLC ± |
| | 3 PLC ± |
| | 4 PLC ± |
| | ANGLES ±1° |
| MATERIAL | FINISH |
| - | - |

DWN M.Pfeilschiffer 18JUL2000
 CHK V.Huhn 18JUL2000
 APVD -
 PRODUCT SPEC -
 APPLICATION SPEC -
 WEIGHT -

STE TE Connectivity

NAME STANDARD TANDEM SPRING RECEPTACLE

SIZE A3 CAGE CODE 00779 DRAWING NO C-166500 RESTRICTED TO -

CUSTOMER DRAWING SCALE 10:1 SHEET 1 OF 1 REV Z4

X-ON Electronics

Largest Supplier of Electrical and Electronic Components

Click to view similar products for [Automotive Connectors](#) category:

Click to view products by [TE Connectivity](#) manufacturer:

Other Similar products are found below :

[003-018-000](#) [60403001](#) [60993906-B](#) [M902-2131](#) [M902-2161](#) [72.330.1035.1](#) [73.353.4028.0](#) [F119300-B](#) [F166900](#) [F258300-B](#) [F358300-B](#)
[F407400](#) [F444110](#) [F487000](#) [F509500B-B](#) [827153-1](#) [8N1515-32-24P](#) [9-1326729-8](#) [925474-1](#) [928905-1](#) [964562-4](#) [968782-1](#) [GT17SA-8DS-](#)
[HU](#) [98891-1012](#) [98947-1016](#) [12004147](#) [12004475-L](#) [12010290](#) [12010309-B](#) [12015454](#) [12020219-B](#) [12020308](#) [12041318-B](#) [12052225-L](#)
[12052466](#) [12059125](#) [12064869](#) [12004327-B](#) [12010503-B](#) [12015308](#) [12015384](#) [12015909](#) [1-21030-1](#) [12041254](#) [12041318](#) [12047946-B](#)
[12047957](#) [12047957-L](#) [12059473](#) [12066261](#)