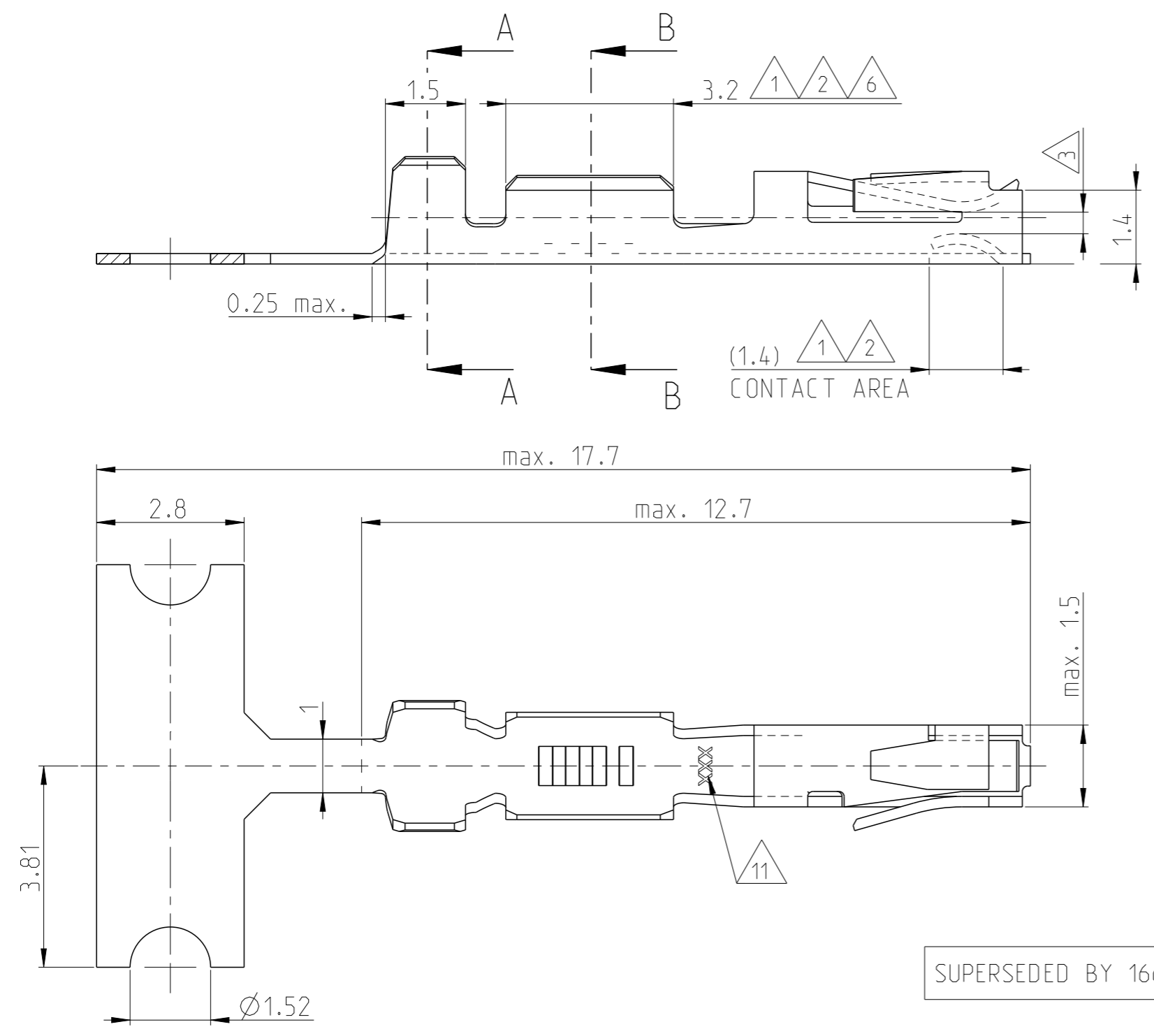


THIS DRAWING IS UNPUBLISHED. RELEASED FOR PUBLICATION 20
 © COPYRIGHT - BY - ALL RIGHTS RESERVED.

REVISIONS					
P	LTR	DESCRIPTION	DATE	DWN	APVD
	Z1	REVISED PER ECO-11-005150	21MAR2011	RK	HMR
	Z2	NEW DRAWING CREATED IN CREO	26JUNE2014	JBH	BRUN
	Z3	NOTE 8 MODIFIED	18NOV2015	MAH.	BRUN
	Z4	TOLERANCES ADDED AT SECTION A-A AND B-B	21JAN2016	MAH.	BRUN

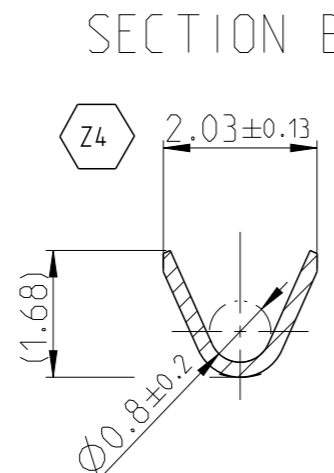
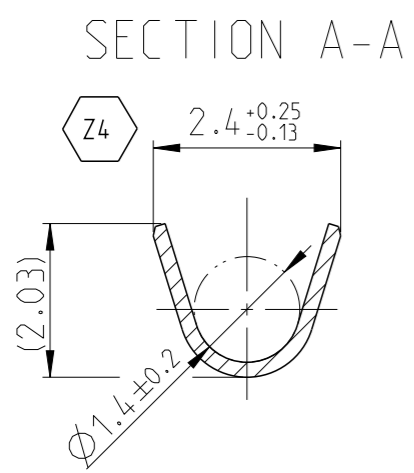


- NOTES:
- 1 UNDERCOATING: 0.8 µm NICKEL OVERALL
CONTACT AREA: 0.8 µm GOLD
CRIMP AREA: GOLDFLASH
 - 2 UNDERCOATING: 0.8 µm NICKEL OVERALL
CONTACT AREA: 1.25 µm GOLD
CRIMP AREA: GOLDFLASH
 - 3 SUITABLE FOR 0.64x0.64 POST
 - 6 UNDERCOATING: 0.8 µm NICKEL OVERALL
CONTACT AREA: 0.4 µm GOLD
CRIMP AREA: GOLDFLASH
 - 7 ADVANCED PROD. NRS. FOR DIN 41612 PART 5 SPEC
 - 8 PLATING: 2.0 µm TIN OVER MIN. 0.5 µm Ni OVERALL
 - 9 REVERSE REELED FOR USE WITH MINI APPLICATOR.
 - 10 STANDARD REELED FOR USE WITH STANDARD APPLICATOR.
 - 11 TRADE MARK.

WIRE RANGE:
20-24 (26) AWG
INSULATION RANGE:
1.40 MAX DIA.

SUPERSEDED BY 166500-2

166722-1	1	PHOSPHORBRONZE	1-166500-2	10	Z
166722-6	8		1-166500-1	10	Z
166722-6	8		166500-9	9	Z
166722-4	6		166500-7	9	W
166722-2	2		166500-4	9	Z
166722-1	1		166500-2	9	Z
LOOSE PIECE NUMBER	PLATING		MATERIAL	STRIPNUMBER	REV



THIS DRAWING IS A CONTROLLED DOCUMENT.

DWN	M.Pfeilschiffer	18JUL2000	STE TE Connectivity	NAME STANDARD TANDEM SPRING RECEPTACLE
CHK	V.Huhn	18JUL2000		
APVD	-	-	PRODUCT SPEC	-
-	-	-	APPLICATION SPEC	-
MATERIAL	-	-	WEIGHT	-
FINISH	-	-	CUSTOMER DRAWING	-

SIZE	CAGE CODE	DRAWING NO	RESTRICTED TO
A3	00779	©-166500	-
SCALE	SHEET	OF	REV
10:1	1	1	Z4

X-ON Electronics

Largest Supplier of Electrical and Electronic Components

Click to view similar products for [Terminals](#) category:

Click to view products by [TE Connectivity](#) manufacturer:

Other Similar products are found below :

[HT-13-10](#) [71M-250-32-NB](#) [01-2065-1-0216](#) [00581P0075](#) [M10-10RX](#) [M10BCK](#) [60205-1](#) [604200-1](#) [60598-1-CUT-TAPE](#) [60617-1-C](#) [60873-1](#) [M14-516R/SK](#) [M14-6RSX](#) [M18-8FBX](#) [M18-8R/LX](#) [M18BCK](#) [61314-6-C](#) [61-S](#) [61-SN-A](#) [62-NBM-A](#) [63-S](#) [640179-1](#) [640917-2-CUT-TAPE](#) [6501550002](#) [66107-2-C](#) [696683-1](#) [696834-1](#) [696861-1](#) [696931-1](#) [696999-1](#) [M8-516RK](#) [M86700006](#) [MA250DMFMX-A](#) [701-2007](#) [701-2307](#) [701-7761-03](#) [70F-110-32-PB](#) [718-N-A](#) [71M-187-20-NBL](#) [71M-250-32-NBL](#) [72F-187-20-NBL](#) [72M-250-32-NBL](#) [7310](#) [73F-250-32](#) [73F-250-32-NL](#) [F14-10C](#) [F-1M](#) [751-250](#) [76650-5002](#) [76828-149](#)