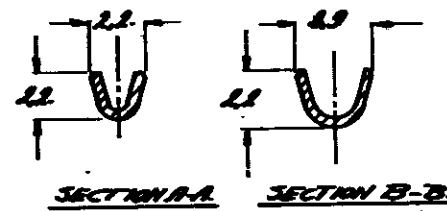
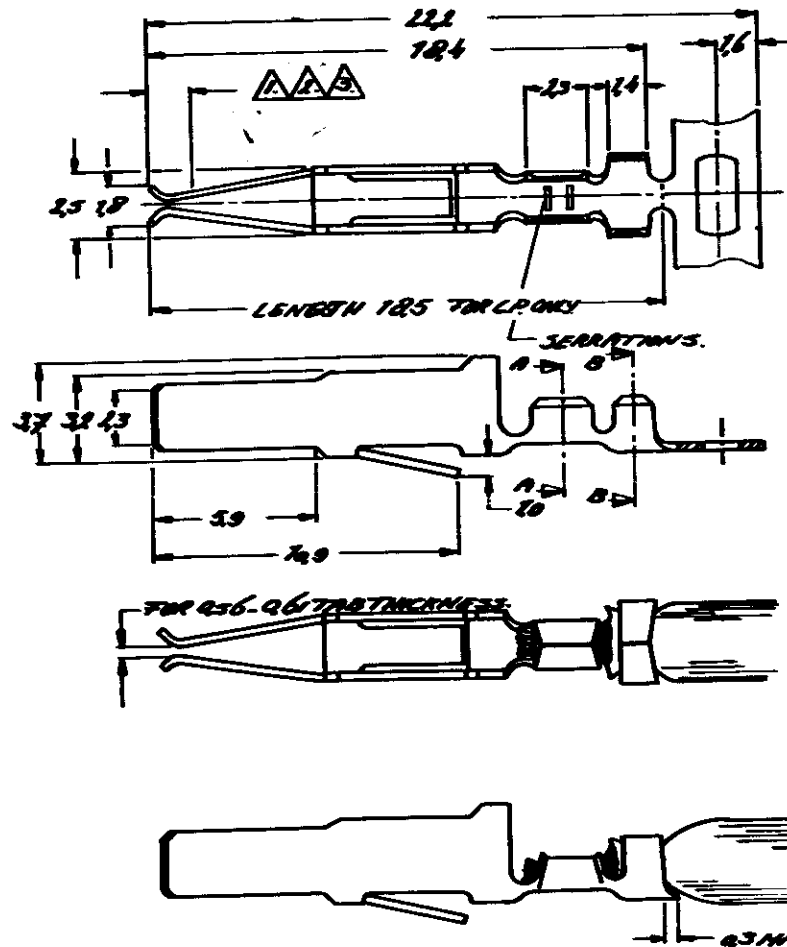
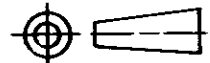


DO NOT SCALE

DIMENSIONS IN mm

METRIC

THIRD ANGLE PROJECTION



FOR REFERENCE ONLY
WILL NOT BE UP - DATED

NOTES:

- ▲ EIC 60603-2 PERFORMANCE LEVEL I OVER 1.25µm NICKEL, REMAINDER 1.25µm NICKEL.
- ▲ EIC 60603-2 PERFORMANCE LEVEL II OVER 1.25µm NICKEL, REMAINDER 1.25µm NICKEL.
- ▲ EIC 60603-2 PERFORMANCE LEVEL III OVER 1.25µm NICKEL, REMAINDER 1.25µm NICKEL.

LOOSE PIECE.	FINISH	MATERIAL	PART NUMBER
16632-3.	SEE NOTE A	P.H. BRONZE	16646-4.
16632-2.	SEE NOTE A	P.H. BRONZE	16646-3.
16632-1.	SEE NOTE A	P.H. BRONZE	16646-2.

CUSTOMER DRAWING FOR REFERENCE ONLY WILL NOT BE UPDATED	TE Connectivity		
	THIS DRAWING IS UNPUBLISHED / RELEASED FOR PUBLICATION © COPYRIGHT IS BY AMP-HOLLAND B.V. ALL INTERNATIONAL RIGHTS RESERVED. AMP PRODUCTS MAY BE COVERED BY U.S. AND FOREIGN PATENTS AND/OR PATE. ITS PENDING.		
DR. <i>TR. Huisman 12-3-83</i>	WIRE RANGE 0.2-0.5 mm	NAME CRIMP ON / SNAP-IN	REV. DATE D M Y
CHK. <i>[Signature]</i>	WIRE RANGE 0.2 - 1.0 mm	NAME TAB RECEPTACLE STRIP	A 05 83
APP. <i>[Signature]</i>	SIZE AS	SHEET 1 OF 1	REV. LTR. D
		DRAWING NO. C-166460-E	

8 7 6 5 4 3 2 1

X-ON Electronics

Largest Supplier of Electrical and Electronic Components

Click to view similar products for [Standard Card Edge Connectors](#) category:

Click to view products by [TE Connectivity](#) manufacturer:

Other Similar products are found below :

[6565204-6](#) [PKC-156](#) [1437274-4](#) [147889-1](#) [1489165-4](#) [1-582587-1](#) [1-582589-1](#) [2-6437275-9](#) [284-0102-12100](#) [306022901000000](#) [307-012-502-202](#) [307-024-526-201](#) [307-056-520-300](#) [307-080-526-208](#) [245-062-520-350](#) [287-0032-12101](#) [306-028-525-102](#) [306-240-318](#) [307-036-502-202](#) [307-036-521-301](#) [307-072-526-202](#) [345-060-559-303](#) [368-004-520-201](#) [392-008-559-201](#) [534671-1](#) [5-530501-5](#) [341-240-317](#) [345-029-520-300](#) [345-030-500-301](#) [345-044-500-300](#) [345-220-058](#) [346-240-318](#) [357-030-526-201](#) [387-012-523-300](#) [395-044-520-300](#) [395-100-524-300](#) [50-12B-10](#) [50-6SN-5](#) [09-07-2032](#) [10035388-106LF](#) [10035388-802LF](#) [10122859-009LF](#) [530555-1](#) [EBT156-15A2X](#) [2007209-1](#) [5-678046-1](#) [1766200-1](#) [650231-6](#) [650289-1](#) [73726-0005](#)