



Innovative Solutions for Elevators and Escalators

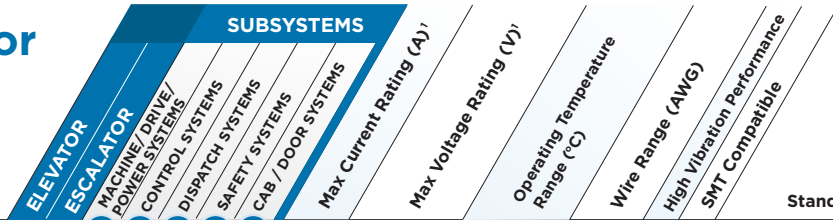
TE Connectivity (TE) is your solutions provider offering high-performance elevator and escalator components to keep people moving. We offer a vast array of electromechanical and electronic products to help solve many design challenges. Our development capabilities range from simple modifications to unique custom designed solutions. With our customer focused product development, engineering support and easy access to additional online information, TE can help you take your elevator and escalator project to the next level.



INTELLIGENT BUILDINGS

Design Navigator

Go to te.com  for further information



	1	2	3	4	5	Max Current Rating (A) ¹	Max Voltage Rating (V) ¹	Operating Temperature Range (°C)	Wire Range (AWG)	High Vibration Performance	SMT Compatible	Standards
AMP-LATCH Ribbon Cable Connectors	●	●			●	1	250 AC	-65 to +105	28			UL
Antennas ²	●				●						●	UL
Cable Identification for harnesses, wire and cable (CSL, SP, KMT, SBP, PVF)	●	●	●	●	●			-30 to +150				UL
Circuit Protection	●	●			●	15	240 AC	-40 to +85		●	●	UL, CSA, TUV
CLOUDSPLITTER Connector System	●	●			●	1.5 signal 5.0 power	150 AC 20 DC	-40 to +85	26-24		●	UL, cUL
Controlling Signal Relays	●	●				5	250 AC/220 DC	-55 to +125			●	UL, CSA, VDE, IEC
Custom Cable Assemblies	●	●	●	●	●	varies*	varies*	varies*		●		UL, CSA, VDE
DIP Switches	●	●	●			0.1	50 DC	-30 to +85			●	UL, CSA, VDE
Dynamic Series Connectors	●	●	●			65	630 AC	-55 to +105	30-6	●	●	UL, RU, CSA, TUV
ELECTRO-TAP Connectors	●				●		300 AC/DC	+105 Max	20-14			UL
Eurostyle Terminal Blocks	●	●	●			10	300 AC/DC	-30 to +105	30-12	●		UL, cUL
Industrial Ethernet	●	●			●	0.5	24 AC	-40 to +70	26-22	●	●	UL, CSA
Industrial USB	●				●	2	30 AC	-40 to +85	24-18	●	●	UL, CSA, USB 2.0
Flexible Printed Circuit (FPC)/ Flexible Flex Circuit	●				●	1.0	250 AC	-40 to +85		●	●	
Free Height Board-to-Board Connectors	●	●				0.5	100 AC	-40 to +85			●	
Hermaphroditic Connectors	●				●	6	125 AC/DC	-30 to +105	22-18		●	UL
Heavy Duty Connectors (HDC)	●	●	●			350	3000 AC	-40 to +125	26-300 MCM	●	●	UL, IEC
LUMAWISE LED Holders	●	●			●	5	300 DC	-40 to +105	22-18			UL, IEC, Zhaga
MAG-MATE Terminals	●	●	●				240 AC	-65 to +125	34-12			UL
Micro/Standard Poke-In Connectors	●				●	5	250 AC/DC	-25 to +130	26-18	●	●	UL
Mini Universal MATE-N-LOK Connectors	●	●	●			9.5	600 AC	-55 to +105	30-16			UL, CSA, VDE
Modular Jacks	●	●	●	●	●	1.5	150AC	-40 to +85	26-22			UL
Mass Termination Assembly (MTA) & SL Connectors	●	●	●			12.5	600 AC	-55 to +105	26-18			UL, CSA
MULTILOCK Connectors	●	●	●			10	12 DC	-30 to +105	20-16	●		
NECTOR Power Systems	●	●			●	20	400 AC	-20 to +85	18, 4.0-1.5	●	●	UL, IEC
Releasable Poke-In Wire Connectors	●	●			●	6	400 AC/DC	-30 to +105	22-18	●	●	UL, IEC
Resistors ³	●	●	●	●		Refer to table below for product details						
Power Relays & Contactors	●	●	●			120	600 AC	-55 to +65				UL, CSA, VDE, SEMKO, IEC
Safety (Force Guided) Relays	●	●	●		●	16	250 AC	-40 to +85				UL, VDE, TUV, CQC, Industry**
Single Phase EMI/RFI Power Filters	●	●	●	●		60	250 AC	-10 to +40	26-8			UL, CSA, VDE
Tactile Switches	●	●	●	●		0.05	24 DC	-35 to +105			●	
Three Phase EMI/RFI Power Filters	●	●	●			200	480 AC/277 AC	-10 to +40	12-0			UL, CSA, VDE
Universal MATE-N-LOK Connectors	●	●	●		●	19	600 AC	-55 to +125	30-16	●		UL, CSA, VDE

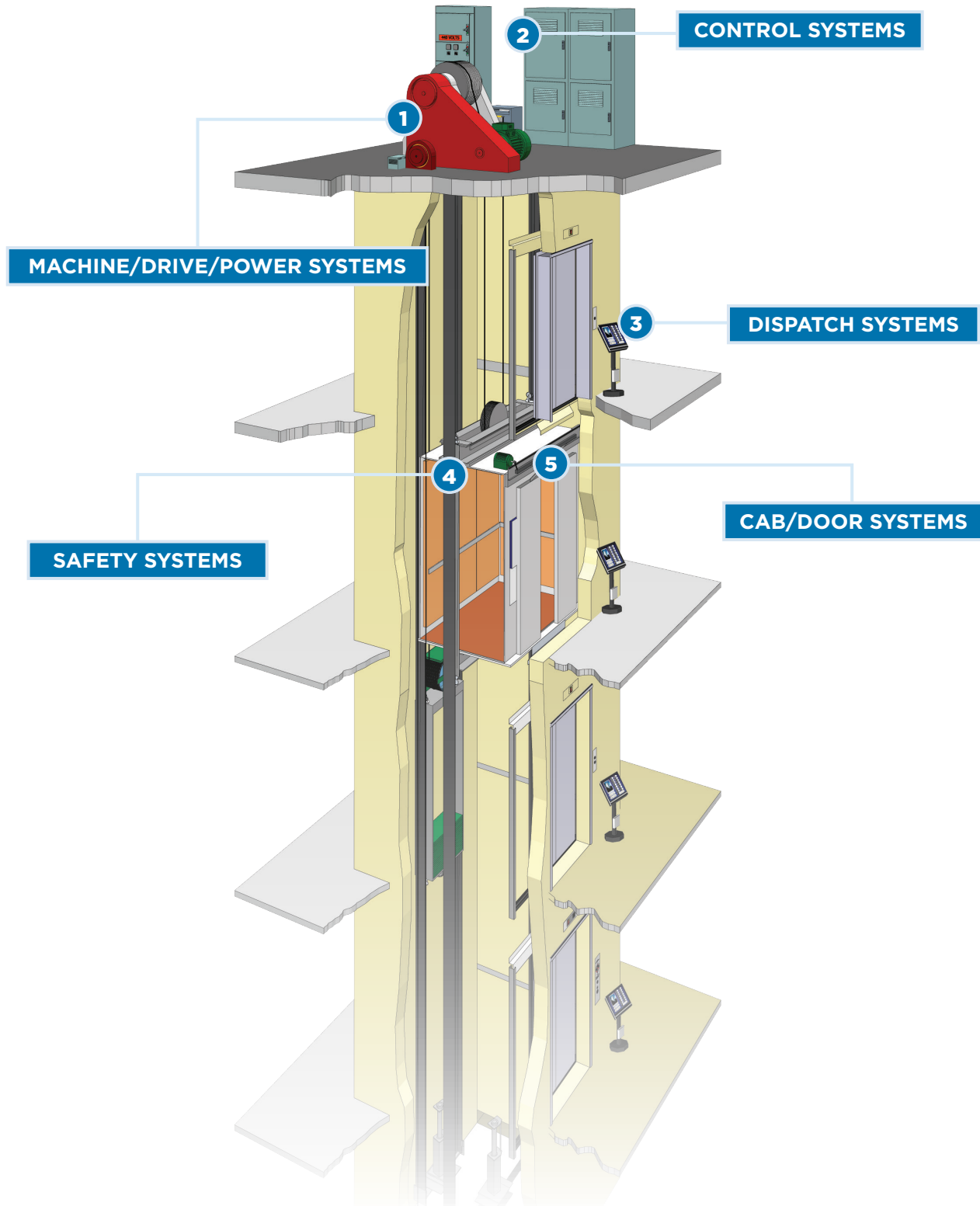
Resistors ³								
Family	Technology	Key Features	Control Circuitry	Capacitor Precharge / Discharge	Braking	Balancing	Snubber	Current Sense
C / ER	Wirewound	2.5 to 14W, C=Vitreous / ER=Silicone	●	●				
CBT/CCR	Carbon / Ceramic	1/4 to 2W Pulse Withstand	●					
CJT	Wirewound	175 to 1000W Mineral Filled			●			
HS / THS	Wirewound	5W to 300W Aluminium Housed	●	●	●			
Load Bank	Wirewound	Customized Load Bank			●			
RGP	Thick Film	0.25W High Ohmic	●			●	●	
RL73	Thick Film	SMD Current Sense	●					●
RN73 / RP73 / CPF	Thin Film	SMD Precision Chip	●					●
RR / ROX	Metal Film/Oxide	1 to 7W High Power	●	●		●	●	
SBC	Wirewound	4 to 40W Ceramic Cased	●	●				
SL / SBL	Foil	0.25W to 2.5W Current Sense	●					●
SM	Wirewound/Oxide	1 to 5W Moulded Power Chip	●	●				●
SQ	Wirewound/Oxide	2 to 40W Ceramic Cased	●	●	●			
TLR / HL	Foil	0.5 to 3W Current Sense	●					●
TE	Wirewound	10 to 2500W Tubular		●				

- CQC - China Quality Certification
- CSA - Canadian Standard Association
- cUL - Tested to Canadian Standards by Underwriters' Laboratories
- IEC - International Electrotechnical Commission
- Industry - Meets product specific industry standards (details on product page at te.com)
- RU - Recognized Underwriters' Laboratories
- SEMKO - Svenska Elektriska Materielkontrollanstalten
- TUV - Technischer Überwachungs-Verein
- UL - Underwriters' Laboratories
- VDE - Verband Deutscher Elektroingenieure
- Zhaga - Standard for Interchangeable LED Light Sources

¹ May vary based on application and product selection
² TE is a leading developer and manufacturer of high performance embedded and external antennas. Visit www.antenna.te.com to learn more.
³ Current rating, voltage rating, and operating temperature range may vary based on application and product selection
* Available with custom specifications

Go to te.com for further information 

TE offers solutions for all your elevator needs.



Featured Products



1 2 Resistors

- Accomodate a wide variety of applications with a large product offering
- Improve the life of other system components with electrical discharge control
- Allow for fine tuning of motor performance to support unique installation requirements

🔍 Search term:
"Resistors"

🔍 Catalog I no.
1773442-9

🔍 Catalog II no. 130950

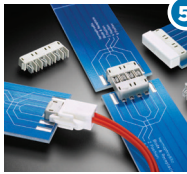


2 Free Height Board-to-Board Connectors

- Support high reliability with polarized mating
- Provide design flexibility with a variety of stack heights
- Save valuable PCB space with compact connector design

🔍 Search term:
"Free Height"

🔍 Catalog no. 889092



5 Hermaphroditic Connectors

- Save space with low profile, flat surface design
- Provide manufacturing flexibility with SMT or reflow processing compatibility
- Simplify design by allowing the same footprint on both ends of the strip

🔍 Search term:
"Hermaphroditic"

🔍 Catalog no. 6-1773454-3



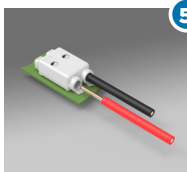
4 5 NECTOR Power Systems

- Reduce assembly time with power "plug and play"
- Minimize space requirement with multi-position connectors in a circular form factor
- Meet outdoor sealing requirements with IP67 rated versions

🔍 Search term:
"NECTOR"

🔍 Brochure I no.
1773457-7

🔍 Brochure II no. 5-1773465-6



5 Releasable Poke-In Wire Connector

- Minimize shadowing with rounded corners
- Save space with low profile design
- Allow for repeatable, flexible wire insertion

🔍 Search term:
"Releasable Poke-In"

🔍 Brochure no. 1-1773730-4



1 2 5 Dynamic Series Connectors

- Support low signal to high power applications with a broad range of versatile contacts
- Save time and money with centralized modular wiring system
- Prevent mismatching with keyed and color coded housings

🔍 Search term:
"Dynamic Series"

🔍 Catalog no. 1242132



5 LUMAWISE LED Holders

- Simplify installation with snap-in LED retention feature
- Avoid soldering with poke-in wire connection
- Streamline assembly and installation with tool-less termination of solid fused and stranded wire

🔍 Search term:
"LUMAWISE"

🔍 Brochure no.
8-1773700-9



1 2 Mass Termination Assemblies (MTA) & SL Connectors

- Reduce assembly costs with mass termination of wire
- Allow for daisy chain applications with wire feed-through capability
- Increase design flexibility with right-angle and vertical mount products and through-hole and SMC configurations

🔍 Search term: "MTA"

🔍 Selection Guide
no. 82056



2 3 5 CLOUDSPLITTER Connector System

- Offer both Cat 5e signal performance and DC power in one RJ45 standard package
- Provide surface mount capability in a Cat 5e connector
- Achieve easy retrofit with acceptance of standard RJ45 plugs

🔍 Search term:
"CLOUDSPLITTER"

🔍 Data Sheet no. 1-1773707-2

🔍 Flyer no. 1-1773707-3



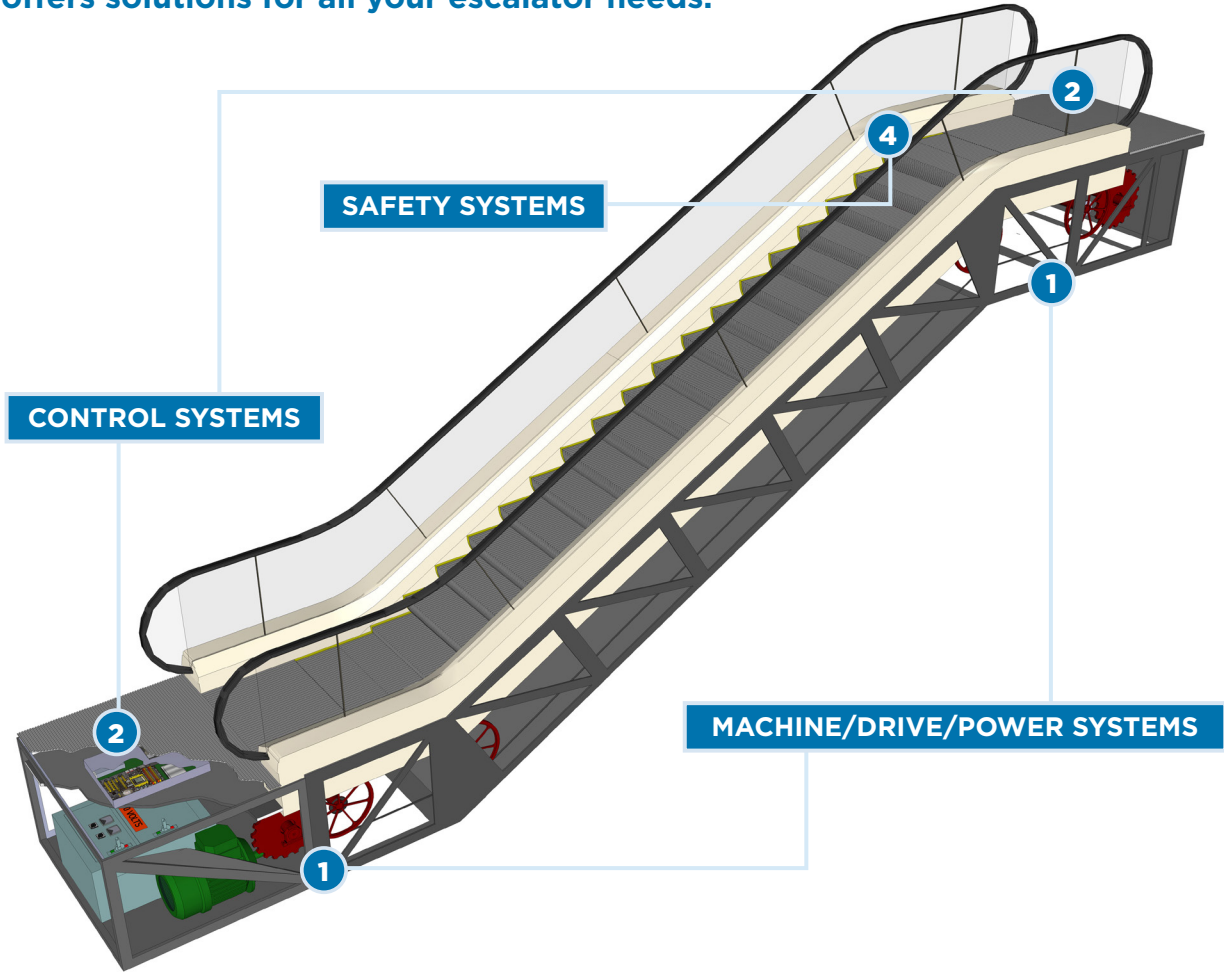
1 2 4 Relays

- Withstand extreme environments with high performance designs
- Design for delayed action with internal timer option
- Support system needs with various options from a single source

🔍 Search term:
"Relays"

Go to te.com for further information

TE offers solutions for all your escalator needs.



Featured Products



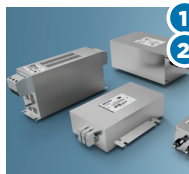
- 2** **Safety (Force Guided) Relays**
- 4**
 - Prevent dangerous situations in critical applications with mechanically linked contacts
 - Simplify circuit monitoring with one relay for both power and signal switching
 - Meet safety requirements with IEC and EN compliant design

🔍 Search term: "Force Guided Relays"
 📄 Catalog no. 1308033-2



- 1** **Eurostyle Terminal Blocks**
- 2**
 - Easy assembly and expansion with modular design and interlocking features
 - Support repeated connect/disconnect cycles with robust clamping technology
 - Gain design flexibility with broad product offering

🔍 Search term: "Eurostyle"
 📄 Quick Reference Guide no. 1-1773458-1



- 1** **Three Phase EMI/RFI Power Filters**
- 2**
 - Enable a broad range of applications with a large product offering
 - Prevent interference with electronic systems by reducing radiated electrical noise
 - Comply with mandated EMI/RFI standards in an easy to install package

🔍 Search term: "EMI/RFI Filters"
 📄 Catalog no. 1654001



- 1** **Universal MATE-N-LOK Connectors**
- 2**
 - Achieve design flexibility and polarization with interchangeable contacts
 - Improve reliability in high moisture environments with splash proof options
 - Maintain ultimate safety with egg crated finger-proof design
- 5**

🔍 Search term: "MATE-N-LOK"
 📄 Catalog no. 82181

Go to te.com for further information ➔



INTELLIGENT BUILDINGS

te.com

© 2014 TE Connectivity Ltd. family of companies. All Rights Reserved.

TE Connectivity, TE connectivity (logo), AMP-LATCH, CLOUDSPLITTER, ELECTRO-TAP, LUMAWISE, MAG-MATE, MATE-N-LOK, MULTILOCK and NECTOR are trademarks. Other logos, product and company names mentioned herein may be trademarks of their respective owners

1-1773732-1 IB CM 03/2014

While TE has made every reasonable effort to ensure the accuracy of the information in this brochure, TE does not guarantee that it is error-free, nor does TE make any other representation, warranty or guarantee that the information is accurate, correct, reliable or current. TE reserves the right to make any adjustments to the information contained herein at any time without notice. TE expressly disclaims all implied warranties regarding the information contained herein, including, but not limited to, any implied warranties of merchantability or fitness for a particular purpose. The dimensions in this catalog are for reference purposes only and are subject to change without notice. Specifications are subject to change without notice. Consult TE for the latest dimensions and design specifications.

X-ON Electronics

Largest Supplier of Electrical and Electronic Components

Click to view similar products for [Thin Film Resistors - SMD category](#):

Click to view products by [TE Connectivity manufacturer](#):

Other Similar products are found below :

[7-2176089-6](#) [MCW0406MD1001DP500](#) [FCR1206J22R](#) [FCR1206J33R](#) [1-2176090-3](#) [1-2176089-6](#) [ERA-3EEB2742V](#)
[NCSR250F4M50DTRGF](#) [2176089-1](#) [2176090-4](#) [2176091-3](#) [CMB02070X3000GB200](#) [CPA2512Q6R80FS-T10](#) [4-1625868-7](#) [5-1625868-9](#) [5-18022-5](#) [ERA-3EEB2671V](#) [CFR0W4J0220A2P](#) [P1206Y1804FNTA](#) [CPA2512E68R0FS-T10](#) [CPA2512Q4R70FS-T10](#) [8-2176091-9](#) [2-2176091-0](#) [NCSR150FR003DTRT3F](#) [NTR06B5832CTRF](#) [NCSR200JR002DTRF](#) [RSJ372NL](#) [NRC-S12F4751TRF](#) [8-1625868-1](#) [1-2176092-4](#) [4-2176093-9](#) [2176091-9](#) [RT1220P-101-M](#) [PLTU0805U1003LST5](#) [PLTU0603U2001LST5](#) [PLTU0805U1001LST5](#) [PLTU0603U4702LST5](#) [4-2176089-0](#) [8-2176091-0](#) [6-2176091-8](#) [3-2176090-3](#) [1-2176092-7](#) [7-2176092-6](#) [7-2176088-7](#) [PCNM2512E1502BST5](#) [2-2176094-5](#) [PCNM2512E3012BST5](#) [4-2176092-6](#) [3-2176091-4](#) [8-2176091-5](#)