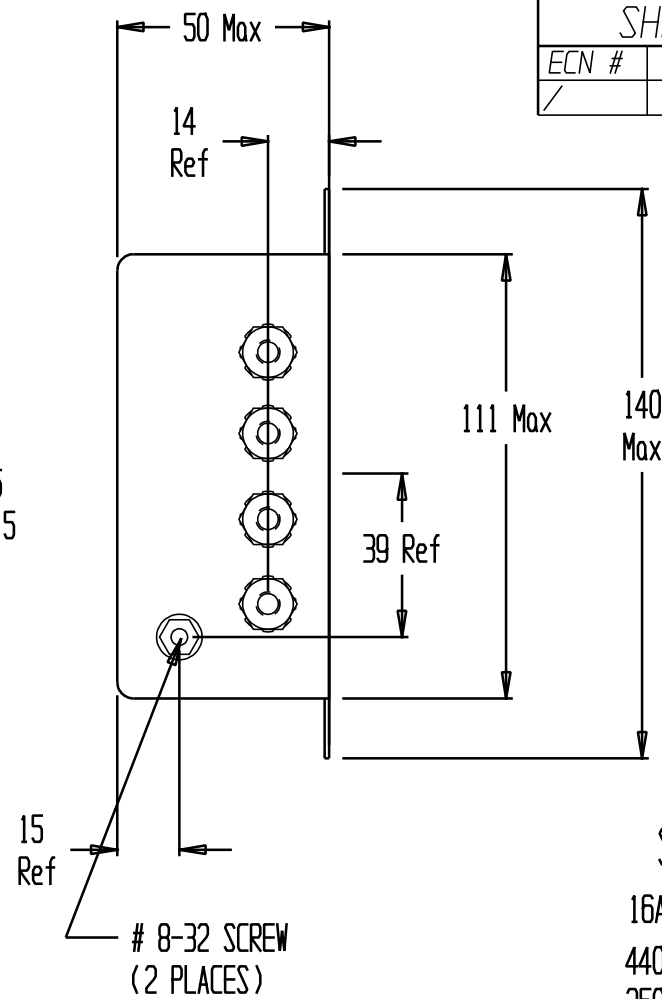
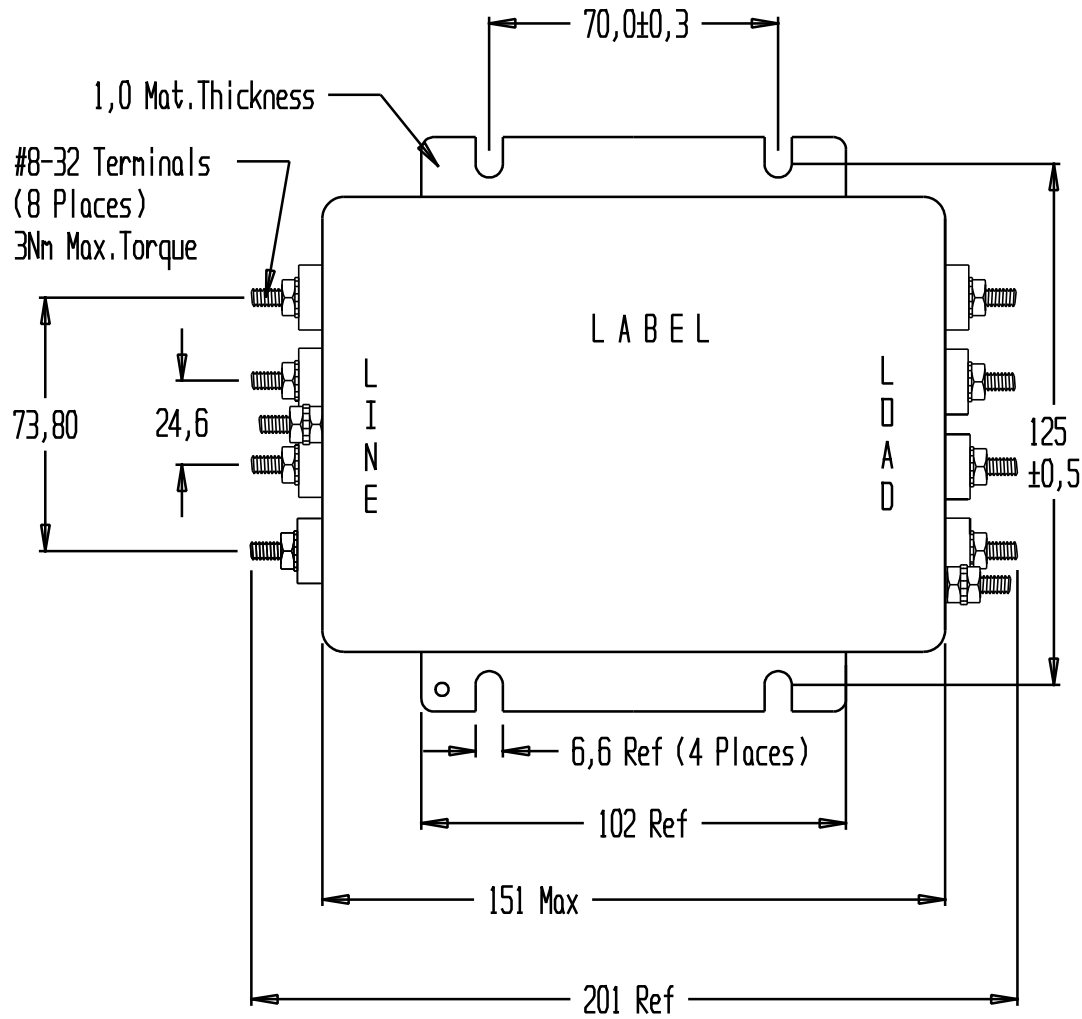


ECN #	APPRVD.	DATE	REV.
/		05-12-96	P2



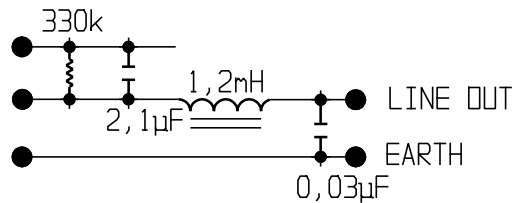
SPECIFICATION

16Amp / 40°C 50-60Hz
440VAC Phase to Phase
250VAC Phase to Neut./Gnd

ATTENUATION

Conn.Mode - 25dB μ V at 100kHz
Dif.Mode - 57dB μ V at 100kHz

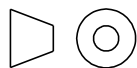
EQUIVALENT SCHEMATIC MEASURED AT 1kHz



Max.Leakage current,each Line to Ground

1,63mA at 120V 60Hz
2,83mA at 250V 50Hz

THIRD ANGLE PROJECTION



This document is proprietary to CORCOM INC. and is not to be reproduced nor used for manufacturing purposes except on CORCOM'S order or prior written consent.



844 E. ROCKLAND RD. LIBERVILLE IL 60048

RFI FILTER

CAD FILE: c:\code\prt\cd\7745A

SCALE: 0,5	DATE: 3-05-96	DRG. NO.	REV.
DRW. BY: MS	DRIG: MS	16AYA6-A	P2

X-ON Electronics

Largest Supplier of Electrical and Electronic Components

Click to view similar products for [Power Line Filters](#) category:

Click to view products by [TE Connectivity](#) manufacturer:

Other Similar products are found below :

[6609019-3](#) [6609026-5](#) [6609030-6](#) [6609973-2](#) [D30A](#) [7-1609090-5](#) [F2810](#) [F4456A](#) [F7382Z](#) [F7863Z](#) [FAHAV3100ZC000](#) [806276](#) [FN2020B-1-06](#) [FN2080B-10-06](#) [FN2410H-32-33](#) [FP144](#) [FS4153-20-06](#) [FS4353-500-99](#) [12-MMB-030-11-D](#) [DB4-393](#) [15811T200](#) [20B1](#) [LC630](#) [2B1](#) [1609080-2](#) [1609993-8](#) [1-6609070-1](#) [F1100AA02](#) [F1150CC10](#) [F1500CA10](#) [F1500CA15](#) [F4041Z](#) [F7585E](#) [1B1](#) [FN2070A-16-06](#) [FN2090A-20-06](#) [FN2090B-12-06](#) [FN2090Z-1-06](#) [FN2410H-25-33](#) [FN2410H-60-34](#) [FN2410H-8-44](#) [FN2412H-8-44](#) [FN323B-6-01](#) [FN3258H-130-35](#) [FN610R-3-06](#) [20EHQ7](#) [20EHZ7](#) [20K1](#) [30B6](#) [3K1](#)