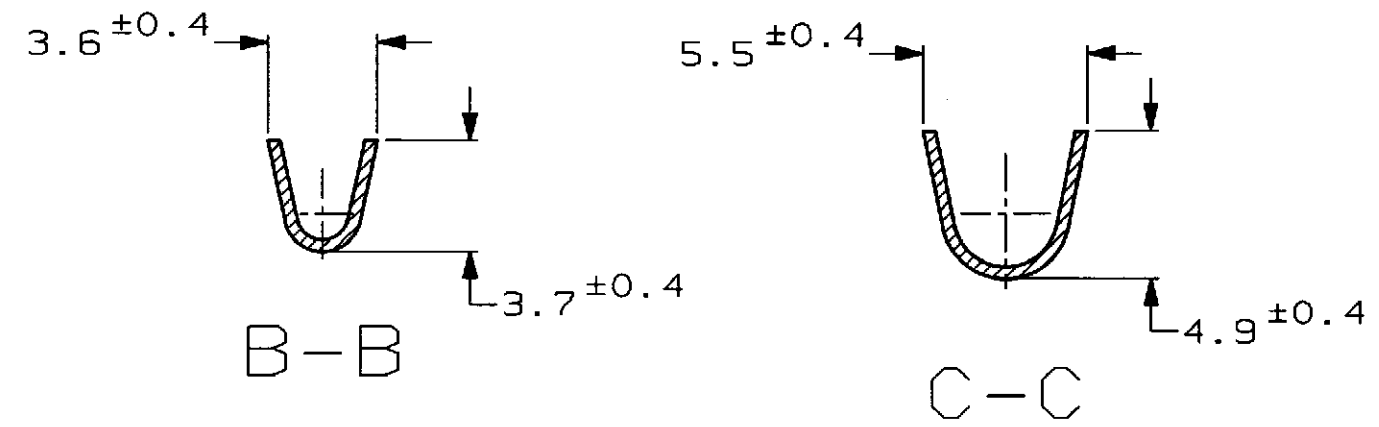
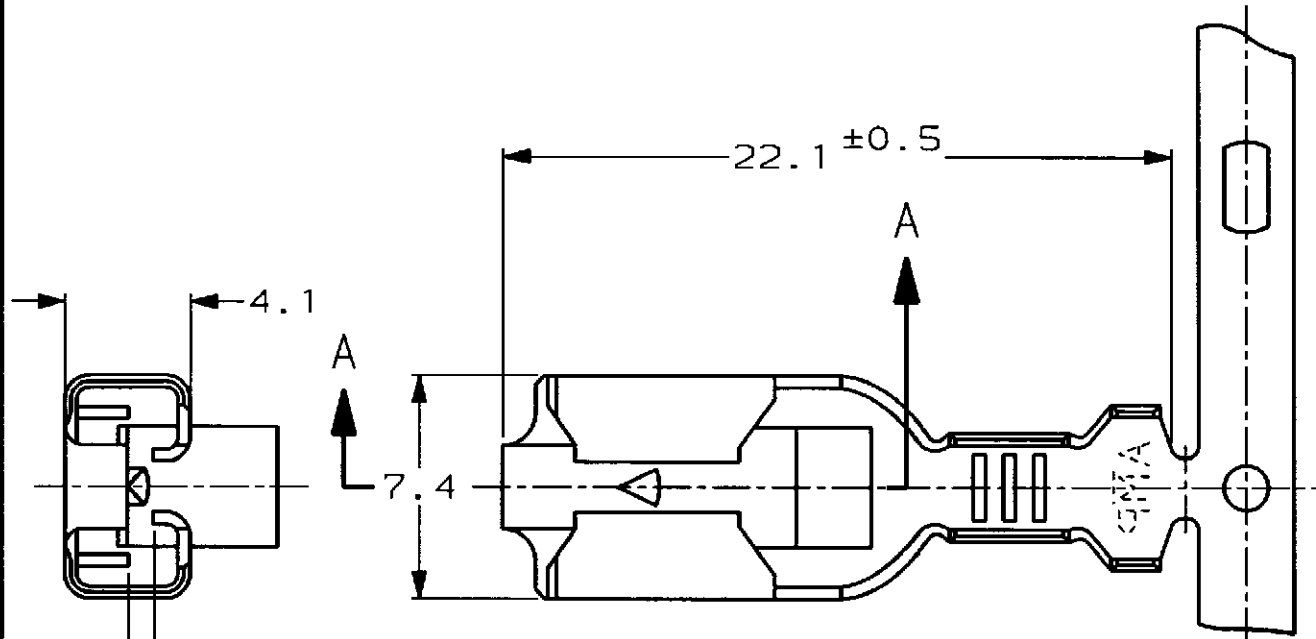
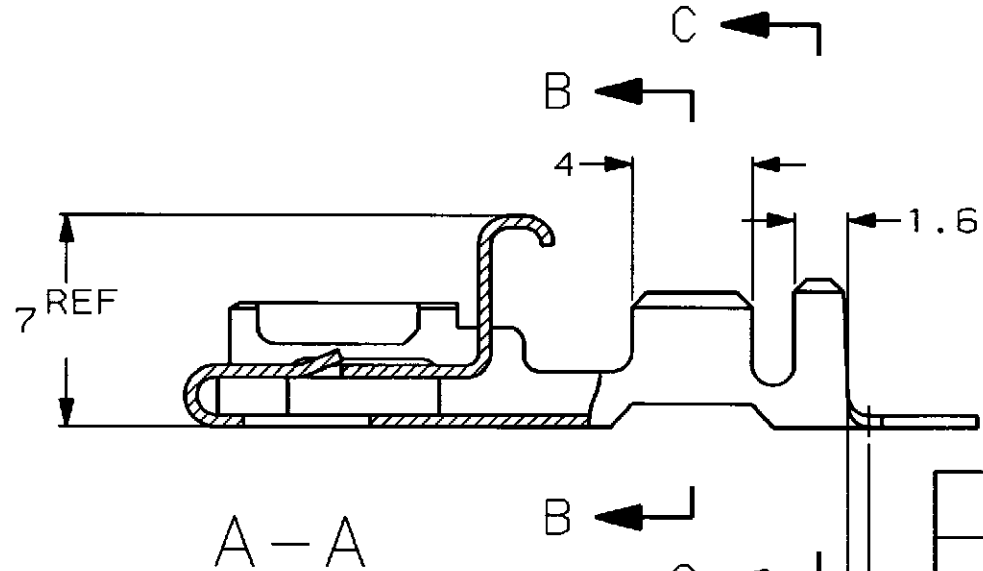


LOC		DIST		REVISIONS					
P	LTR	DESCRIPTION		ECN	DATE	DWN	APVD		
	F	REDRAWN W/CHANGE		FJ00-0148-98	28 JAN 98	TS	MB		



MATING TAB CONTACT 0.8 THICKNESS
0.8厚タブと嵌合



- 1. 適用ハウジングは、型番171809,171810,171848及び154719
- ② 適用製品規格：108-5114,108-5117
- ③ 適用圧着規格：114-5032
- ④ 材料の板厚0.4, ASTM B36に準拠する

- 1. THE MATING HOUSING : 171809,171810,171848 AND 154719
- ② PRODUCT SPEC : 108-5114,108-5117
- ③ APPLICATION SPEC : 114-5032
- ④ MATERIAL THICKNESS 0.4, BASED ON ASTM B36

0.5~2.27	2.1~3.4mm	TIN 錫めつき	PHOSPHOR BRONZE りん青銅	170265-4	170233-4
0.5~2.27	2.1~3.4mm	TIN 錫めつき	BRASS 黄銅	170265-2	170233-2
0.5~2.27	2.1~3.4mm	-#-	BRASS 黄銅	170265-1	170233-1
WIRE RANGE 適用電線範囲	INSULATION DIA 被覆外径	FINISH 仕上げ	MATERIAL 材料	LOOSE PIECE ばら状端子型番	STRIP FORM 連鎖状端子型番
				PART NUMBER 型番	

DIMENSIONS 単位: 概 mm		TOLERANCES UNLESS OTHERWISE SPECIFIED	
		一般公差	±0.2
		30% >10	±0.25
		100% >30	±0.3
		ANGLE	±0.3°
MATERIAL 材料	SEE TABLE 表参照	FINISH 仕上	SEE TABLE 表参照

THIS DRAWING IS A CONTROLLED DOCUMENT FOR AMP INCORPORATED. IT IS SUBJECT TO CHANGE AND THE CONTROLLING ENGINEERING ORGANIZATION SHOULD BE CONTACTED FOR THE LATEST REVISION.

CHK: *Z. Shimohara* 28 JAN 98
APVD: *H. P. [Signature]* 28 JAN 98

AMP 日本一・エム・シー株式会社
Kawasaki, Japan

NAME 名称: 250 シリーズ ポジティブロック リセプタクル
250 SERIES POSITIVE LOCK RECEPTACLE

SIZE: A3 CAGE CODE: 00779 DRAWING NO: 170233 RESTRICTED TO: -

SCALE 尺度: 4:1 SHEET 1 OF 1 REV F

X-ON Electronics

Largest Supplier of Electrical and Electronic Components

Click to view similar products for [Terminals](#) category:

Click to view products by [TE Connectivity](#) manufacturer:

Other Similar products are found below :

[00-054007-01074-6](#) [00-054007-70206-1](#) [00-054007-70210-8](#) [00-054007-70217-7](#) [00-054007-70226-9](#) [00-054007-70228-3](#) [00-054007-70248-1](#) [00-054007-70256-6](#) [00-054007-70301-3](#) [00-054007-70316-7](#) [00-054007-49560-4](#) [00-054007-70209-2](#) [00-054007-70225-2](#) [00-054007-70227-6](#) [00-054007-70231-3](#) [00-054007-70241-2](#) [00-054007-70242-9](#) [00-054007-70244-3](#) [00-054007-70246-7](#) [00-054007-70263-4](#) [00-054007-70288-7](#) [00-054007-70290-0](#) [00-054007-70300-6](#) [00-054007-70304-4](#) [01-2065-1-0216](#) [01-2900-1-04412](#) [00581P0075](#) [600TS-10](#) [60205-1](#) [604200-1](#) [605601-1](#) [60598-1-CUT-TAPE](#) [61314-6-C](#) [61810-3](#) [61-S](#) [61-SN](#) [626-0194](#) [62-NBM-A](#) [62-SN](#) [62-SP](#) [63-S](#) [640179-1](#) [M55155/059I03](#) [M55155/079C01](#) [M55155/099H02](#) [M55155/109H01](#) [M55155/109H02](#) [M55155/12XH05](#) [M55155/16XH02](#) [M55155/29-5S](#)