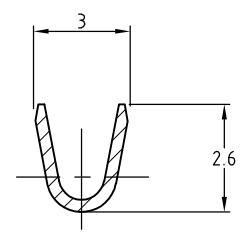
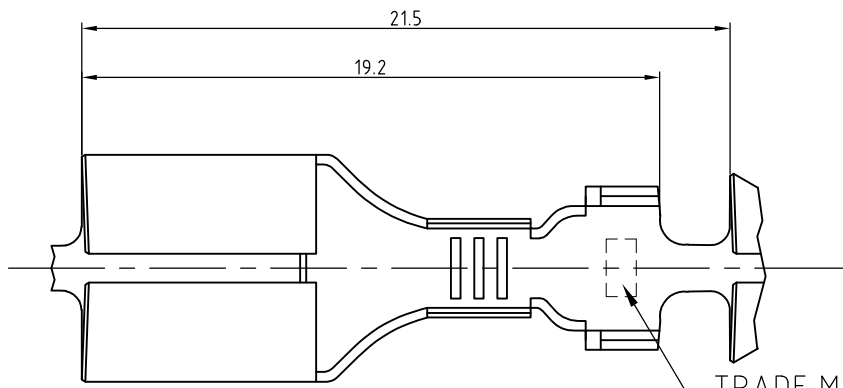
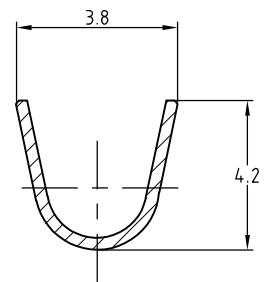
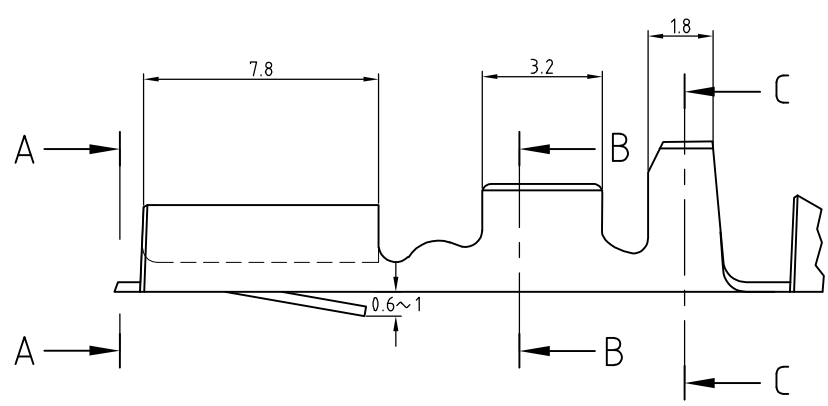


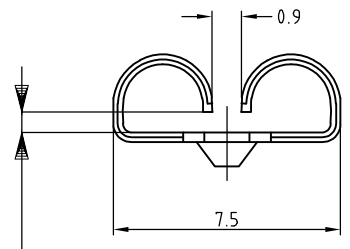
LOC J	DIST —	REVISONS ???			DATE	DWN	APVD
		P	LTR	DESCRIPTION			
			C1	REVISED PER ECO-10-000443	12JAN10	KK	AEG



SECT
断面 B-B



SECT
断面 C-C



この寸法はかん合力によって規定する。
THIS DIMENSION IS CONTROLLED WITH MATING FORCE

VIEW
矢視 A-A

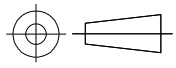
- NOTE;
- PRODUCT SPEC : 108-5001
 - MATING TAB : 170302
 - STRESS RELIEVING FINISH IS SUBJECT TO CHANGE BY THE TYPE OF STRESS RELIVING PROCESS
INERT GAS FURNACE - - - -MATTE
ATMOSPHERIC FURNACE FOLLOWED BY ACID PICKLE - - - -BRIGHT
 - OBSOLETE PARTS; OBSOLETE CIS STREAMLINING PER D. RENAUD/D. SINISI

- 注;
- 製品規格番号 : 108-5001
 - かん合するタブは170302
 - ストレス除去処理
処理法により外観が変わります。
不活性ガス加熱方式 --- 無光沢
大気加熱方式 --- 光沢

4 OBSOLETE

WIRE RANGE 総合電線断面積 0.3~0.89mm ² (AWG#22-18)	INSULATION DIA 被覆外径 1.5~2.6mmφ	P/N OF MATING TAB かん合タブ型番	TIN PLATING 錫めっき	BRASS THICKNESS 黄銅 板厚 0.32	170303-2
			△	BRASS THICKNESS 黄銅 板厚 0.32	170303-1
			FINISH 仕上	MATERIAL 材質	PART NO. 型番

DIMENSIONS: ??? ? mm	DWN J.SATO 15MAY2007	MATERIAL ??	SEE TABLE	FINISH ??	SEE TABLE
	CHK S.MANABE 15MAY2007	Tyco Electronics Kawasaki, Japan			
TOLERANCES UNLESS OTHERWISE SPECIFIED: ????	APVD S.MANABE 15MAY2007				
GENERAL TOLERANCE ±0.4	PRODUCT SPEC ????	NAME ?? .250 SERIES FASTIN FASTON RECEPTACLE			
	APPLICATION SPEC ??????	SIZE A4	CAGE CODE 00779	DRAWING NO ??	RESTRICTED TO —
	WEIGHT	C 170303			
CUSTOMER DRAWING			SCALE ??	4:1	SHEET 1 OF 1 REV C1



THIS DRAWING IS UNPUBLISHED. ALL RIGHTS RESERVED. BY TYCO ELECTRONICS CORPORATION.

X-ON Electronics

Largest Supplier of Electrical and Electronic Components

Click to view similar products for [Terminals](#) category:

Click to view products by [TE Connectivity](#) manufacturer:

Other Similar products are found below :

[00-054007-01074-6](#) [00-054007-70206-1](#) [00-054007-70210-8](#) [00-054007-70217-7](#) [00-054007-70226-9](#) [00-054007-70228-3](#) [00-054007-70248-1](#) [00-054007-70256-6](#) [00-054007-70301-3](#) [00-054007-70316-7](#) [0-0320562-0](#) [00-054007-49560-4](#) [00-054007-70209-2](#) [00-054007-70225-2](#) [00-054007-70227-6](#) [00-054007-70231-3](#) [00-054007-70241-2](#) [00-054007-70242-9](#) [00-054007-70244-3](#) [00-054007-70246-7](#) [00-054007-70263-4](#) [00-054007-70288-7](#) [00-054007-70290-0](#) [00-054007-70300-6](#) [00-054007-70304-4](#) [01-2065-1-0216](#) [01-2900-1-04412](#) [00581P0075](#) [600TS-10](#) [60205-1](#) [604200-1](#) [605601-1](#) [60598-1-CUT-TAPE](#) [61314-6-C](#) [61810-3](#) [61-S](#) [61-SN](#) [626-0194](#) [62-NBM-A](#) [62-SN](#) [62-SP](#) [63-S](#) [640179-1](#) [M55155/059I03](#) [M55155/079C01](#) [M55155/099H02](#) [M55155/109H01](#) [M55155/109H02](#) [M55155/12XH05](#) [M55155/16XH02](#)