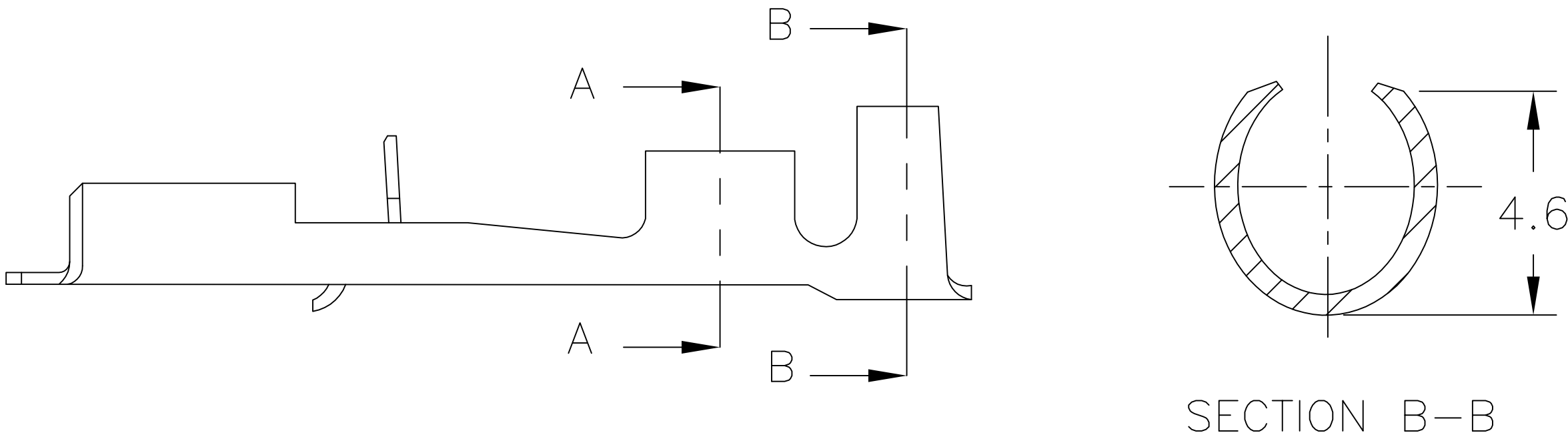
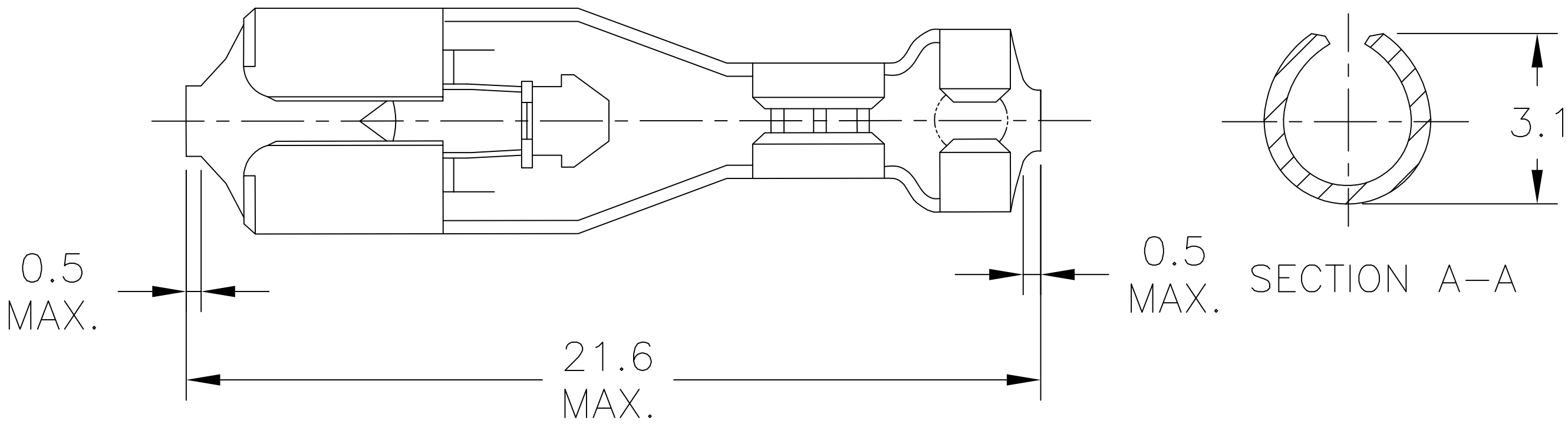

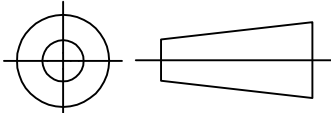


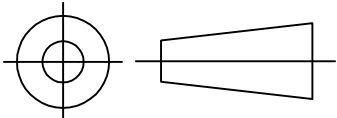
REVISIONS					
P	LTR	DESCRIPTION	DATE	DWN	APVD
	D2	REDRAWN PER ECR-17-011185	04AUG2017	RS	HG



NOTE: THIS TERMINAL IS APPLIED FOR ONE WIRE CRIMPING

411-5262	753899-1	170325-2	POST NICKEL, PHOSPHOR BRONZE	170331-2
411-5262	753899-1	170325-1	PRE-TIN, BRASS	170331-1
INSTRUCTION SHEET	HAND TOOL	STRIP P/N	MATERIAL	PART NO.
		INSULATION DIA: 1.9-3.4mm	WIRE RANGE: 0.51-1.38mm ² (AWG#20-#16)	

DIMENSIONS: mm		DWN RAVI S 08AUG2017	MATERIAL SEE TABLE		FINISH SEE TABLE			
		CHK GUO HOGAN 08AUG2017	<div>TE Connectivity</div>					
TOLERANCES UNLESS OTHERWISE SPECIFIED: 0 PLC ± — 1 PLC ± 0.4 2 PLC ± — 3 PLC ± — 4 PLC ± — ANGLES ± —		APVD GUO HOGAN 08AUG2017					NAME 187 SERIES POS LOCK RECEPT LP —	
		PRODUCT SPEC —						
				APPLICATION SPEC —		SIZE A4		CAGE CODE 00779
		WEIGHT —						
		CUSTOMER DRAWING				SCALE 4:1		SHEET 1 OF 1



X-ON Electronics

Largest Supplier of Electrical and Electronic Components

Click to view similar products for [Terminals](#) category:

Click to view products by [TE Connectivity](#) manufacturer:

Other Similar products are found below :

[00-054007-01074-6](#) [00-054007-70206-1](#) [00-054007-70210-8](#) [00-054007-70217-7](#) [00-054007-70226-9](#) [00-054007-70228-3](#) [00-054007-70248-1](#) [00-054007-70256-6](#) [00-054007-70301-3](#) [00-054007-70316-7](#) [00-054007-49560-4](#) [00-054007-70209-2](#) [00-054007-70225-2](#) [00-054007-70227-6](#) [00-054007-70231-3](#) [00-054007-70241-2](#) [00-054007-70242-9](#) [00-054007-70244-3](#) [00-054007-70246-7](#) [00-054007-70263-4](#) [00-054007-70288-7](#) [00-054007-70290-0](#) [00-054007-70300-6](#) [00-054007-70304-4](#) [01-2065-1-0216](#) [01-2900-1-04412](#) [00581P0075](#) [600TS-10](#) [60205-1](#) [604200-1](#) [605601-1](#) [60598-1-CUT-TAPE](#) [61314-6-C](#) [61810-3](#) [61-S](#) [61-SN](#) [626-0194](#) [62-NBM-A](#) [62-SN](#) [62-SP](#) [63-S](#) [640179-1](#) [M55155/059I03](#) [M55155/079C01](#) [M55155/099H02](#) [M55155/109H01](#) [M55155/109H02](#) [M55155/12XH05](#) [M55155/16XH02](#) [M55155/29-5S](#)