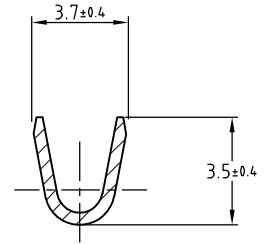
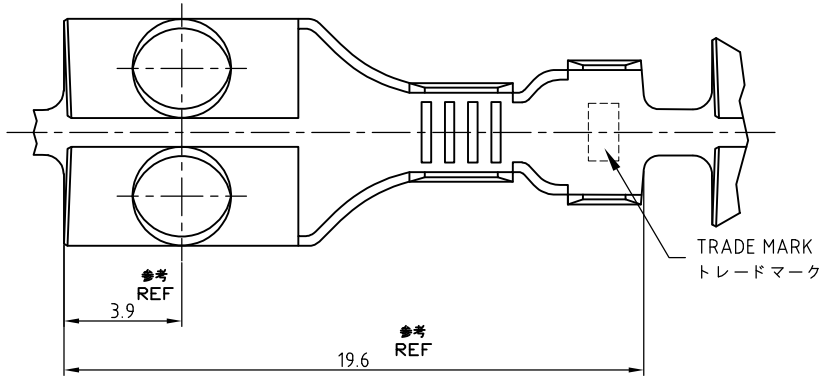
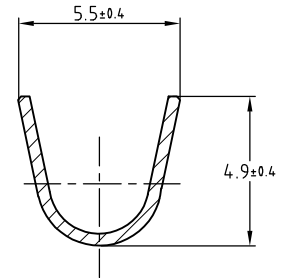
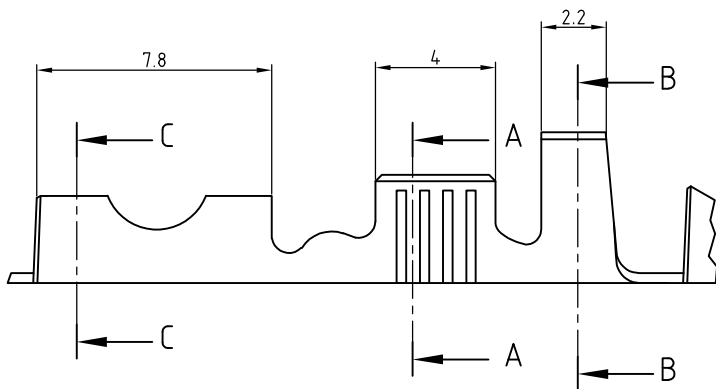


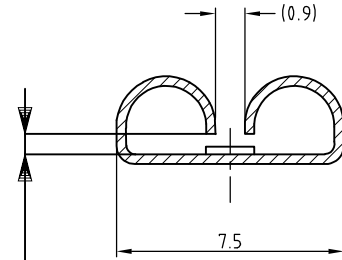
| | | | | | | | |
|----------|-----------|---------------------------|--|--|---------|-----|------|
| LOC J | DIST — | REVISIONS 変更 | | | DATE | DWN | APVD |
| P | LTR | DESCRIPTION | | | 11MAR11 | RK | HMR |
| | D1 | REVISED PER ECO-11-005030 | | | | | |



SECT.
断面 A-A



SECT.
断面 B-B



SECT.
断面 C-C

NOTE;

- STRESS RELIEVING FINISH IS SUBJECT TO CHANGE BY THE TYPE OF STRESS RELIVING PROCESS
INERT GAS FURNACE --- MATTE
ATMOSPHERIC FURNACE FOLLOWED BY ACID PICKLE --- BRIGHT

この寸法はかん合力によって規定する。
THIS DIMENSION IS CONTROLLED WITH MATING FORCE

注;

- ストレス除去処理
処理法により外観が変わります。
不活性ガス加熱方式 --- 無光沢
大気加熱方式 --- 光沢

| | | |
|---------------------|-----------------------------|----------------|
| TIN PLATING 錫めっき | BRASS THICKNESS 黄銅 板厚0.3 | 170342-2 |
| — // — | BRASS THICKNESS 黄銅 板厚0.3 | 170342-1 |
| FINISH 仕上 | MATERIAL 材質 | PART NO. 型番 |

THIS DRAWING IS UNPUBLISHED.

ALL RIGHTS RESERVED.

COPYRIGHT

WIRE RANGE 総合電線断面積
0.5~2.27mm² (AWG#20-14)

INSULATION DIA 被覆外径
2.2~3.4mmφ

DIMENSIONS:
単位: 耗
mm

DWN J.SATO 17MAY2007

MATERIAL 材料

SEE TABLE

FINISH 仕上

SEE TABLE

TOLERANCES UNLESS OTHERWISE SPECIFIED:
一般公差

CHK S.MANABE 17MAY2007

APVD S.MANABE 17MAY2007

PRODUCT SPEC
製品規格

APPLICATION SPEC
取付適用規格

WEIGHT

NAME 名称

.250 SERIES RECEPTACLE WITHOUT LATCH

SIZE

CAGE CODE

DRAWING NO
番号

RESTRICTED TO

A4

00779

170342

—

CUSTOMER DRAWING

SCALE 尺度

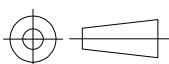
4:1

SHEET

1 OF 1

REV

D1



TE Connectivity

X-ON Electronics

Largest Supplier of Electrical and Electronic Components

Click to view similar products for [Terminals](#) category:

Click to view products by [TE Connectivity](#) manufacturer:

Other Similar products are found below :

[HT-13-10](#) [71M-250-32-NB](#) [01-2065-1-0216](#) [00581P0075](#) [M10-10RX](#) [M10BCK](#) [60205-1](#) [604200-1](#) [60598-1-CUT-TAPE](#) [60617-1-C](#) [60873-1](#) [M14-516R/SK](#) [M14-6RSX](#) [M18-8FBX](#) [M18-8R/LX](#) [M18BCK](#) [61314-6-C](#) [61-S](#) [61-SN-A](#) [62-NBM-A](#) [63-S](#) [640179-1](#) [640917-2-CUT-TAPE](#) [6501550002](#) [66107-2-C](#) [696683-1](#) [696834-1](#) [696861-1](#) [696931-1](#) [696999-1](#) [M8-516RK](#) [M86700006](#) [MA250DMFMX-A](#) [701-2007](#) [701-2307](#) [701-7761-03](#) [70F-110-32-PB](#) [718-N-A](#) [71M-187-20-NBL](#) [71M-250-32-NBL](#) [72F-187-20-NBL](#) [72M-250-32-NBL](#) [7310](#) [73F-250-32](#) [73F-250-32-NL](#) [F14-10C](#) [F-1M](#) [751-250](#) [76650-5002](#) [76828-149](#)