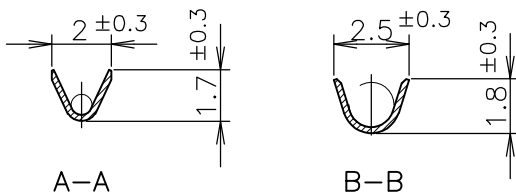
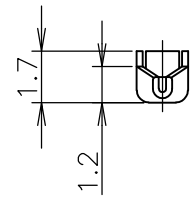
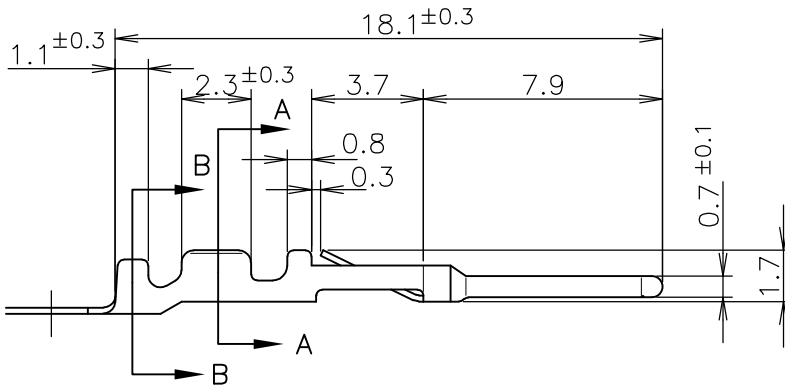
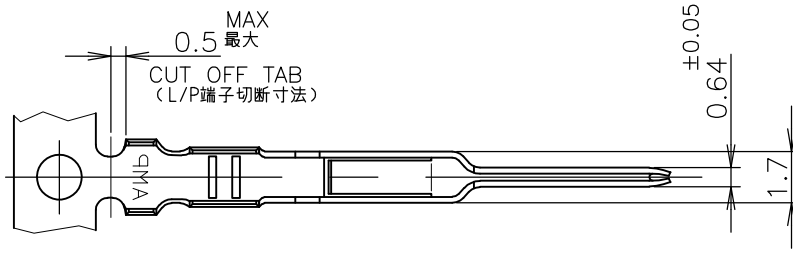


LOC J	DIST /	REVISIONS 変更			DATE 11MAR11	DWN RK	APVD HMR
		P	LTR	DESCRIPTION			
		C2	REVISED PER ECO-11-005030				



- |   |  |
|---|--|
| 1 使用ハウジング<br>172213-*: パネル取付型<br>172211-*: 宙吊り型 | 1 APPLICABLE HOUSINGS<br>172213-*: PANEL MOUNT TYPE<br>172211-*: FREE HANGING TYPE |
| 2 適用規格<br>製品規格: 108-5118<br>取付適用規格: 114-5035    | 2 SPECIFICATIONS<br>PRODUCT SPEC.: 108-5118<br>APPLICATION SPEC.: 114-5035         |
| 3 バラ状端子用手工工具 724685-1                           | 3 HAND TOOL: 724685-1  |
| ④ めっき仕様: ニッケル下地、<br>接触ピン部のみ金めっき 0.38μ以上         | ④ FINISH: 0.00038 MIN GOLD PLT AT PIN AREA<br>OVER Ni PLT                          |

↑ -3	磷青銅0.2厚 ④	PHOS-BZ 0.2t ④	↑ -3
-2	錫めっき済磷青銅0.2厚	PRE-TIN PLT PHOS-BZ 0.2t	-2
170429-1	錫めっき済黄銅0.2厚	PRE-TIN PLT BRASS 0.2THK	170376-1
バラ状端子 LOOSE PIECE	材質・仕上	MATERIAL & FINISH	型番 PART NO

WIRE RANGE 包含電線断面積	(AWG#20-#26) 0.14~0.52 mm <sup>2</sup>	INSULATION DIA 被覆外径	1.1~1.9 mm
-----------------------	---	------------------------	------------

GENERAL TOLERANCE  
一般公差

10 ≥ ±0.2  
30 ≥ > 10: ±0.25  
100 ≥ > 30: ±0.3  
ANGLES: ±3°

DIMENSIONS:  
単位: 耗  
mm

DWN TSUKAKOSHI 26MAY1980

MATERIAL 材料 表参照 SEE TABLE

FINISH 仕上 表参照 SEE TABLE

TOLERANCES UNLESS OTHERWISE SPECIFIED:  
一般公差

CHK N.ONOUE 30MAY1980

APVD - 30MAY1980



TE Connectivity

- 0 PLC ± -
- 1 PLC ± -
- 2 PLC ± -
- 3 PLC ± -
- 4 PLC ± -
- ANGLES ± -

PRODUCT SPEC 製品規格

NAME 名称 EI シリーズ コネクタ ピンコンタクト (AWG#20-#26)  
PIN CONTACT, AWG 20-26

APPLICATION SPEC 取付適用規格

EI SERIES CONNECTOR

WEIGHT

SIZE	CAGE CODE	DRAWING NO 番号	RESTRICTED TO
A4	00779	C-170376	-

CUSTOMER DRAWING

SCALE 尺度 4:1 SHEET 1 OF 1 REV C2

RELEASED FOR PUBLICATION MAY 1, 1980.

THIS DRAWING IS UNPUBLISHED.

ALL RIGHTS RESERVED.

© COPYRIGHT 1980 By -

## X-ON Electronics

Largest Supplier of Electrical and Electronic Components

*Click to view similar products for [Headers & Wire Housings](#) category:*

*Click to view products by [TE Connectivity](#) manufacturer:*

Other Similar products are found below :

[892-18-020-10-001101](#) [58102-G61-06LF](#) [582553-1](#) [0009485154](#) [009176003701906](#) [0050291907](#) [LY20-4P-DT1-P1E-BR](#) [02.125.8002.8](#)  
[609-3404](#) [61062-3](#) [61082-181009](#) [622-3653LF](#) [63453-116](#) [636-1030](#) [636-1427](#) [636-3427](#) [636-4007](#) [641938-9](#) [641991-4](#) [644827-2](#) [65817-010LF](#) [65817-015LF](#) [65863-015LF](#) [66207-023LF](#) [67095-007LF](#) [67601157](#) [68645-018](#) [68648-049](#) [70.362.1628.0](#) [70-4210](#) [70-4226B](#) [70-4853B](#) [707-5020](#) [707-5028](#) [71.350.2428.0](#) [71918-208LF](#) [71961-016LF](#) [733-134](#) [733-162](#) [754199-000](#) [760-3052](#) [787-8014-00](#) [79531-3000](#)  
[FCN-360C032-B](#) [FCN-367T-T012/H](#) [FCN-723D010/2](#) [80.063.4001.1](#) [800-90-001-10-001000](#) [800-90-010-10-002000](#) [801-43-002-10-013000](#)