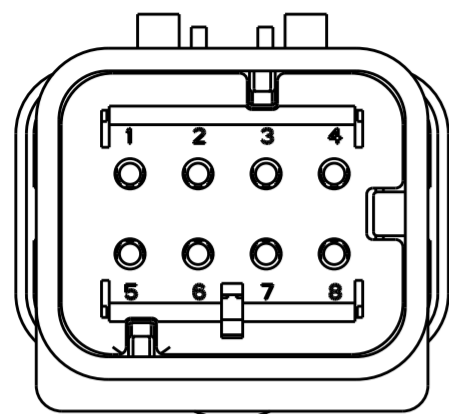
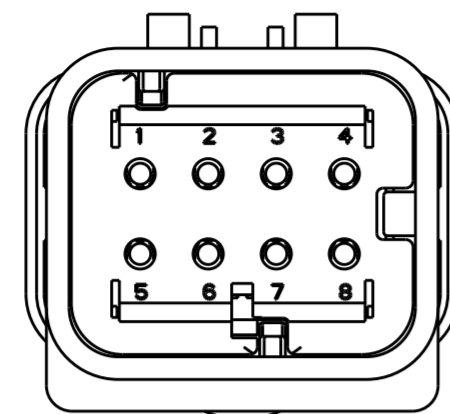


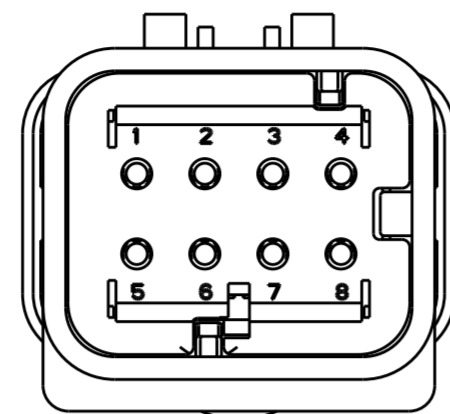
| REVISIONS | | | | | |
|-----------|-----|---------------------------|-----------|-----|------|
| P | LTR | DESCRIPTION | DATE | DWN | APVD |
| B | I | REVISED PER ECR-10-019377 | 30SEP2010 | HMR | T.M |
| C | | REVISED PER ECR-14-000206 | 26DEC2013 | DR | RB |



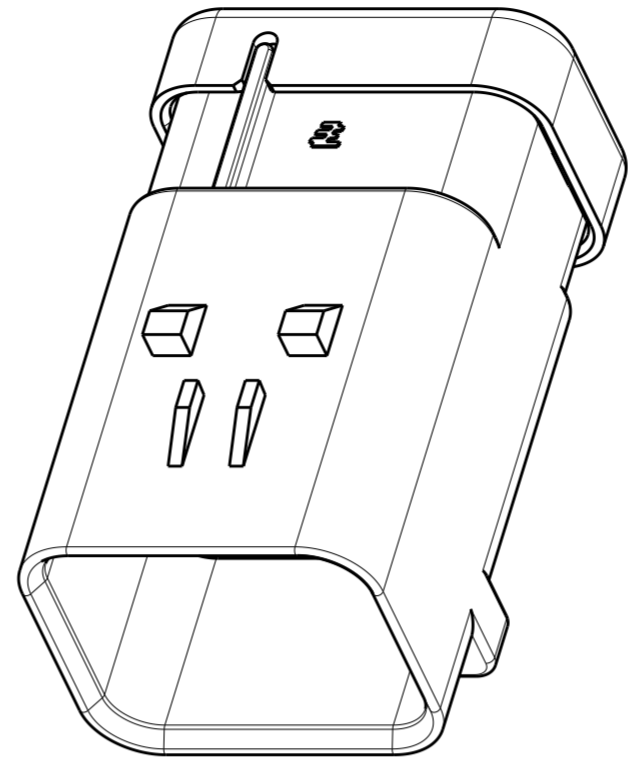
1717676-2
SCALE 2:1



1717676-3
SCALE 2:1



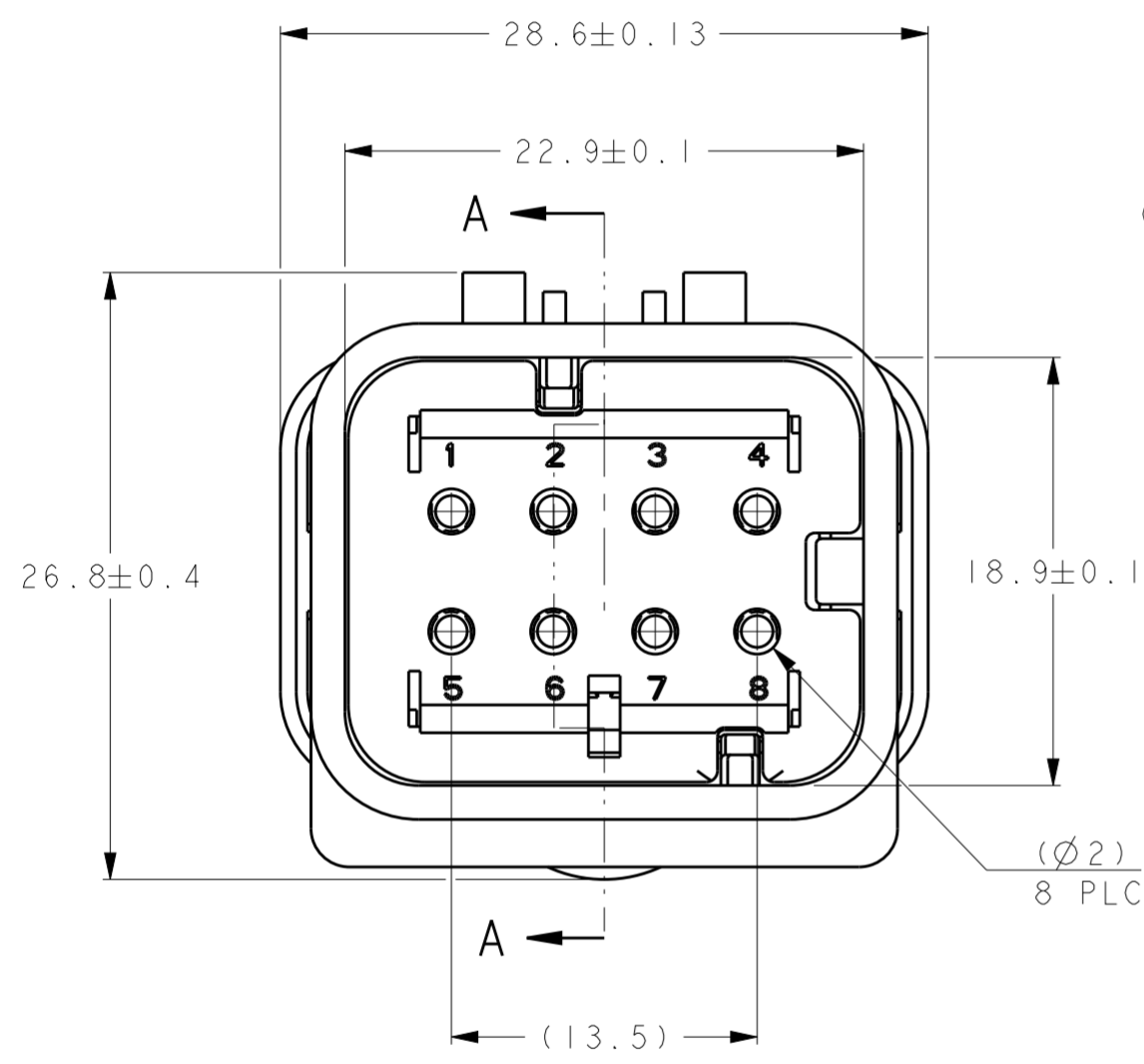
1717676-4
SCALE 2:1



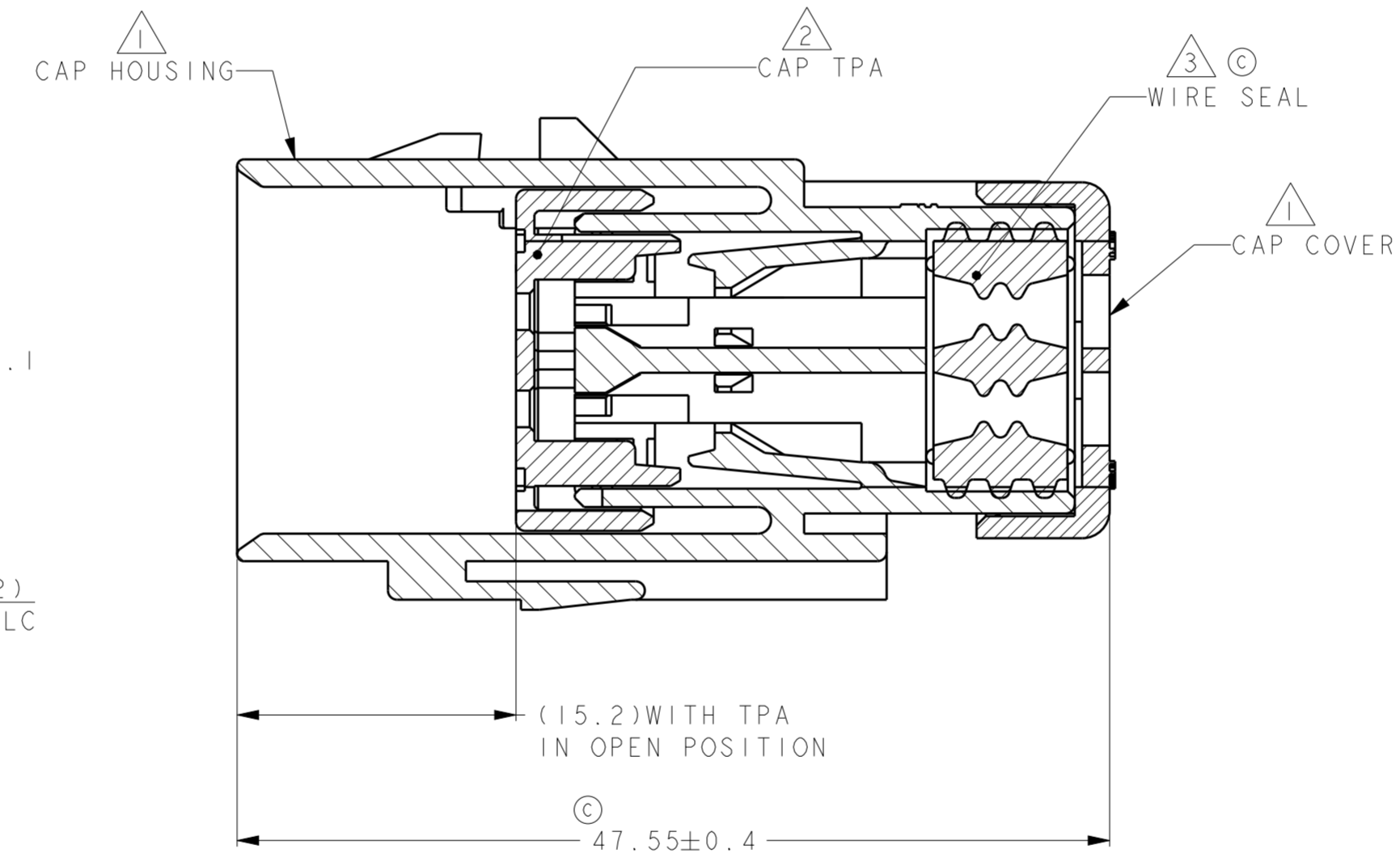
SCALE 2:1

- ① MATERIAL: 15% GLASS FILLED THERMOPLASTIC
COLOR: BLACK
- ② MATERIAL: 15% GLASS FILLED THERMOPLASTIC
COLOR: (SEE TABLE)
- ③ MATERIAL: SILICONE
COLOR: GREEN

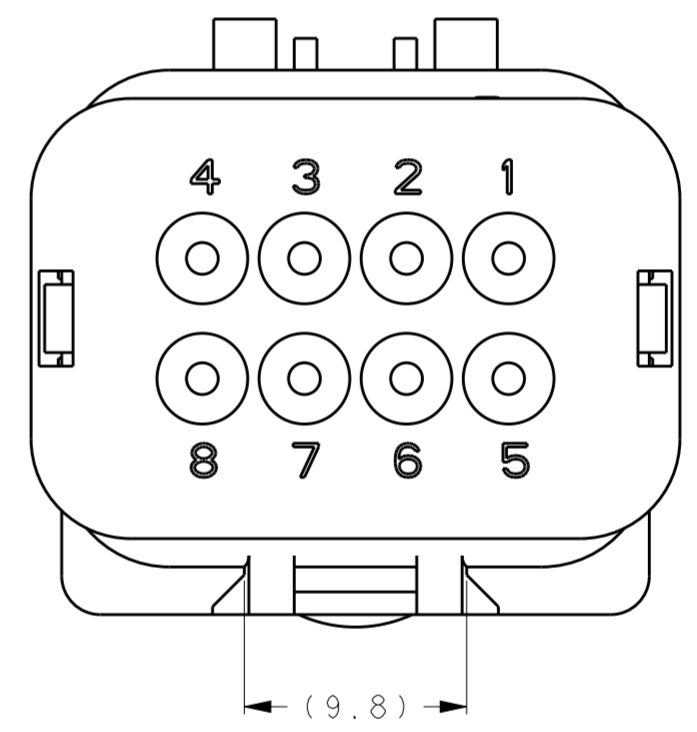
4. WIRE INSULATION RANGE: $\varnothing 2.24 \sim \varnothing 3.94$



1717676-1 SHOWN



A - A
OPEN POSITION



| | |
|-----------|-------------|
| GREEN | 1717676-4 |
| YELLOW | 1717676-3 |
| GRAY | 1717676-2 |
| RED | 1717676-1 |
| TPA COLOR | PART NUMBER |

| | | | | | | | | | | | | | | | | | | |
|---|---------|-------------------------------|---|-------|------|-------|-------|-------|--------|-------|---------|--------|---|--------|---|--------------------------|----------------|--|
| THIS DRAWING IS A CONTROLLED DOCUMENT. | | DWN Y. KATO 15JAN2004 | TE Connectivity | | | | | | | | | | | | | | | |
| DIMENSIONS: mm | | CHK S. MANABE 15JAN2004 | | | | | | | | | | | | | | | | |
| TOLERANCES UNLESS OTHERWISE SPECIFIED: | | APVD S. MANABE 15JAN2004 | NAME CAP ASSY, 8 POS. BRACKET REVERSE TYPE AMP SEAL 16 | | | | | | | | | | | | | | | |
| <table border="1"> <tr><td>0 PLC</td><td>±</td></tr> <tr><td>1 PLC</td><td>±0.5</td></tr> <tr><td>2 PLC</td><td>±0.13</td></tr> <tr><td>3 PLC</td><td>±0.013</td></tr> <tr><td>4 PLC</td><td>±0.0001</td></tr> <tr><td>ANGLES</td><td>±</td></tr> <tr><td>FINISH</td><td>-</td></tr> </table> | | 0 PLC | ± | 1 PLC | ±0.5 | 2 PLC | ±0.13 | 3 PLC | ±0.013 | 4 PLC | ±0.0001 | ANGLES | ± | FINISH | - | PRODUCT SPEC 108-2184 | SIZE A20779 | |
| 0 PLC | ± | | | | | | | | | | | | | | | | | |
| 1 PLC | ±0.5 | | | | | | | | | | | | | | | | | |
| 2 PLC | ±0.13 | | | | | | | | | | | | | | | | | |
| 3 PLC | ±0.013 | | | | | | | | | | | | | | | | | |
| 4 PLC | ±0.0001 | | | | | | | | | | | | | | | | | |
| ANGLES | ± | | | | | | | | | | | | | | | | | |
| FINISH | - | | | | | | | | | | | | | | | | | |
| MATERIAL TBD | | APPLICATION SPEC 114-13065 | DRAWING NO C-1717676 | | | | | | | | | | | | | | | |
| | | WEIGHT - | RESTRICTED TO | | | | | | | | | | | | | | | |
| | | CUSTOMER DRAWING | SCALE 3:1 SHEET 1 OF 1 REV C | | | | | | | | | | | | | | | |

X-ON Electronics

Largest Supplier of Electrical and Electronic Components

Click to view similar products for [Automotive Connectors](#) category:

Click to view products by [TE Connectivity](#) manufacturer:

Other Similar products are found below :

[003-018-000](#) [60403001](#) [60993906-B](#) [M902-2131](#) [M902-2161](#) [72.330.1035.1](#) [73.353.4028.0](#) [F119300-B](#) [F166900](#) [F258300-B](#) [F358300-B](#)
[F407400](#) [F444110](#) [F487000](#) [F509500B-B](#) [827153-1](#) [8N1515-32-24P](#) [9-1326729-8](#) [925474-1](#) [928905-1](#) [964562-4](#) [968782-1](#) [GT17SA-8DS-](#)
[HU](#) [98891-1012](#) [98947-1016](#) [12004147](#) [12004475-L](#) [12010290](#) [12010309-B](#) [12015454](#) [12020219-B](#) [12020308](#) [12041318-B](#) [12052225-L](#)
[12052466](#) [12059125](#) [12064869](#) [12004327-B](#) [12010503-B](#) [12015308](#) [12015384](#) [12015909](#) [1-21030-1](#) [12041254](#) [12041318](#) [12047946-B](#)
[12047957](#) [12047957-L](#) [12059473](#) [12066261](#)