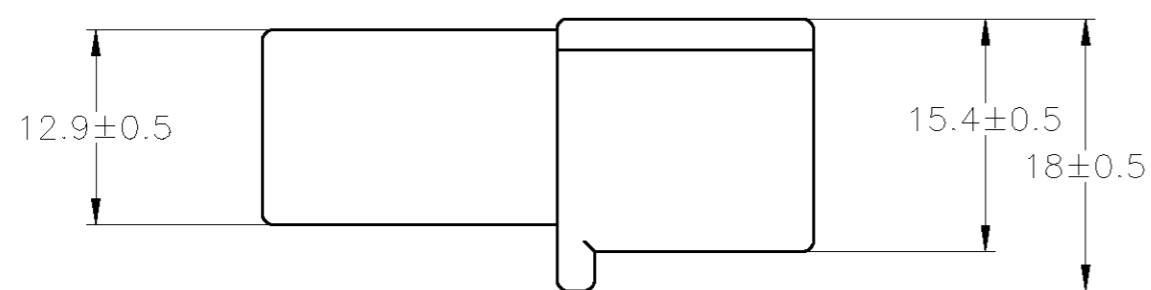
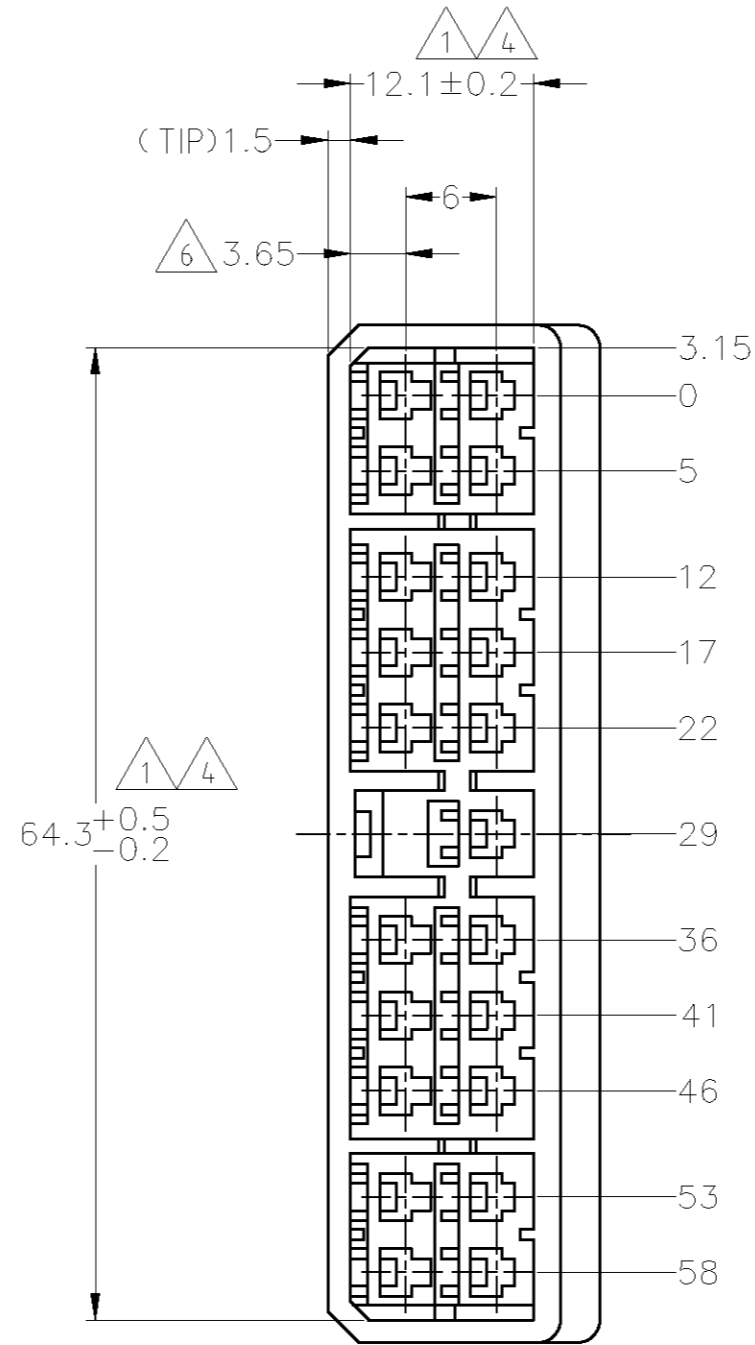
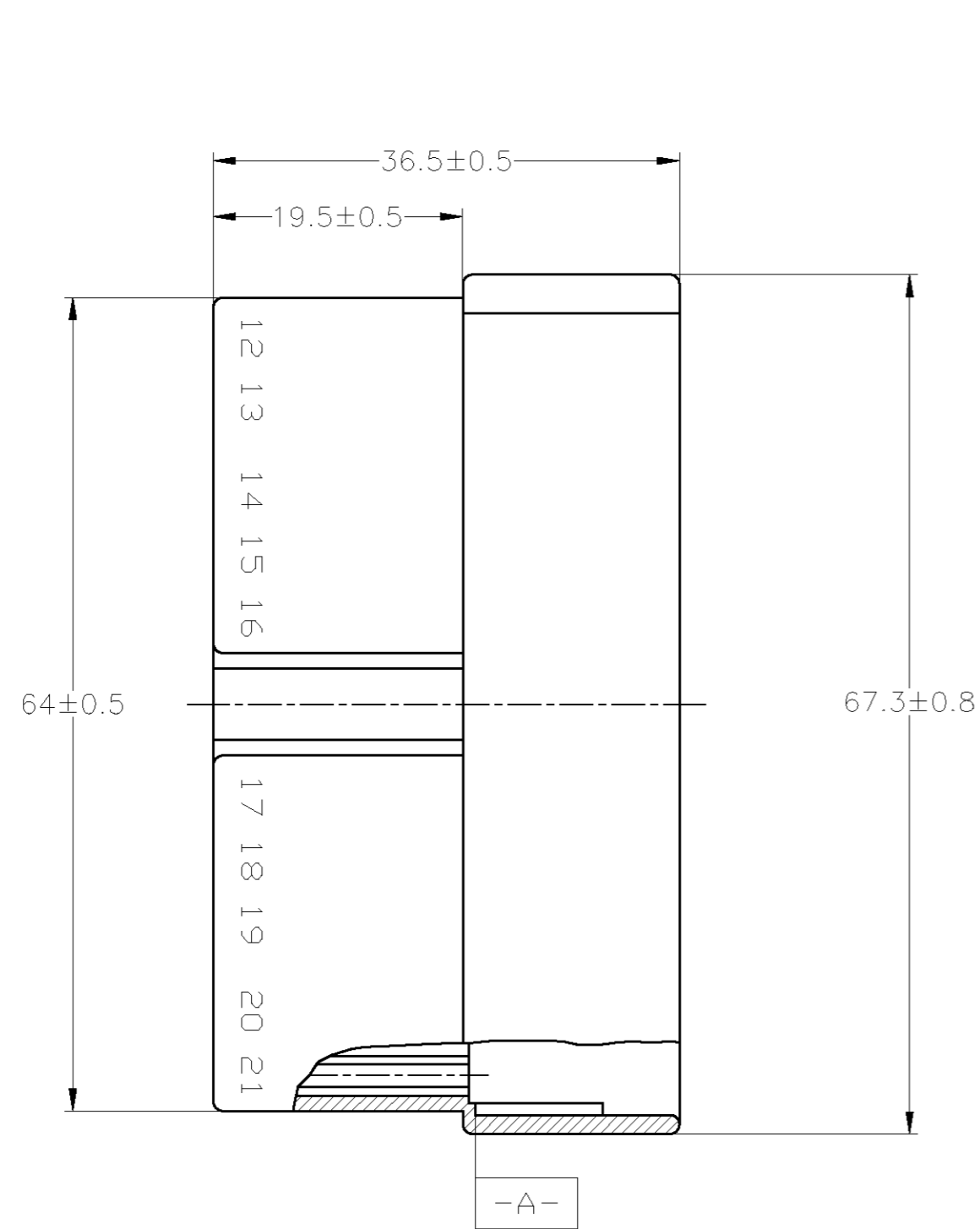


THIS DRAWING IS UNPUBLISHED. RELEASED FOR PUBLICATION
 © COPYRIGHT BY TYCO ELECTRONICS CORPORATION. ALL INTERNATIONAL RIGHTS RESERVED.

LOC		DIST		REVISIONS			
P	LTR	DESCRIPTION		DATE	DWN	APVD	
	C1	REVISED		ECR-10-004036	25FEB10	TS KB	



- ① IN COUPLING WITH THE PLUG HOUSING MATING SATISFIES FUNCTION.
 - 2. APPLIED CONTACT PN 170221, 170222
 - 3. PRODUCT SPECIFICATION NUMBER: 108-5099
 - ④ TO BE MEASURED WITHIN 2mm FROM [-A-]
 - 5. IN COUPLING WITH THE PLUG HOUSING MATING FORCE 29.4N (3kg) MAX. WITHOUT RECEPTACLE CONTACT.
 - ⑥ CENTERLINE OF CONTACT
- ① 相手ハウジングと所定の機能を満たして嵌合出来ること。
 - 2. 使用コンタクト型番：170221 及び 170222, その他
 - 3. 製品規格番号：108-5099
 - ④ [-A-] 面より2mmの範囲で測定。
 - 5. 相手ハウジングとの嵌合力は29.4N (3kg) 以下。但し、コンタクトは含まない。
 - ⑥ コンタクトセンター迄の距離

OBSOLETE	YELLOW	171829-7
OBSOLETE	GRAY	171829-6
	GREEN	171829-4
OBSOLETE	BROWN	171829-3
	BLACK	171829-2
	NATURAL	171829-1
	COLOR	PART NUMBER

THIS DRAWING IS A CONTROLLED DOCUMENT.		DWN T.SHINOHARA 30JUL09	Tyco Electronics Corporation Kawasaki, Japan	
DIMENSIONS: mm		CHK K.BETSUI 30JUL09	NAME	
TOLERANCES UNLESS OTHERWISE SPECIFIED:		APVD K.BETSUI 30JUL09	PRODUCT SPEC	
0-PLG ± - 1-PLG ± - 2-PLG ± - 3-PLG ± - 4-PLG ± - ANGLES ± -		SEE NOTE 3		APPLICATION SPEC
MATERIAL 66 NYLON (UL94V-2)		FINISH -	WEIGHT -	SIZE A2
GENERAL TOLERANCE 10 ≥ : ±0.2 30 ≥ > 10 : ±0.25 100 ≥ > 30 : ±0.3 ANGLE : ±3°		CUSTOMER DRAWING		SCALE 2:1
		CAGE CODE 00779		DRAWING NO C=171829
		RESTRICTED TO		REVISION 1 OF 1
				REV C1

X-ON Electronics

Largest Supplier of Electrical and Electronic Components

Click to view similar products for [Headers & Wire Housings](#) category:

Click to view products by [TE Connectivity](#) manufacturer:

Other Similar products are found below :

[892-18-020-10-001101](#) [58102-G61-06LF](#) [582553-1](#) [0009485154](#) [009176003701906](#) [0050291907](#) [LY20-4P-DT1-P1E-BR](#) [02.125.8002.8](#)
[609-3404](#) [61062-3](#) [61082-181009](#) [622-3653LF](#) [63453-116](#) [636-1030](#) [636-1427](#) [636-3427](#) [636-4007](#) [641938-9](#) [641991-4](#) [644827-2](#) [65817-](#)
[010LF](#) [65817-015LF](#) [65863-015LF](#) [66207-023LF](#) [67095-007LF](#) [67601157](#) [68645-018](#) [68648-049](#) [70.362.1628.0](#) [70-4210](#) [70-4226B](#) [70-](#)
[4853B](#) [707-5020](#) [707-5028](#) [71.350.2428.0](#) [71918-208LF](#) [71961-016LF](#) [733-134](#) [733-162](#) [754199-000](#) [760-3052](#) [79531-3000](#) [FCN-](#)
[360C032-B](#) [FCN-367T-T012/H](#) [FCN-723D010/2](#) [80.063.4001.1](#) [800-90-001-10-001000](#) [800-90-010-10-002000](#) [801-43-002-10-013000](#)
[801-43-006-10-002000](#)