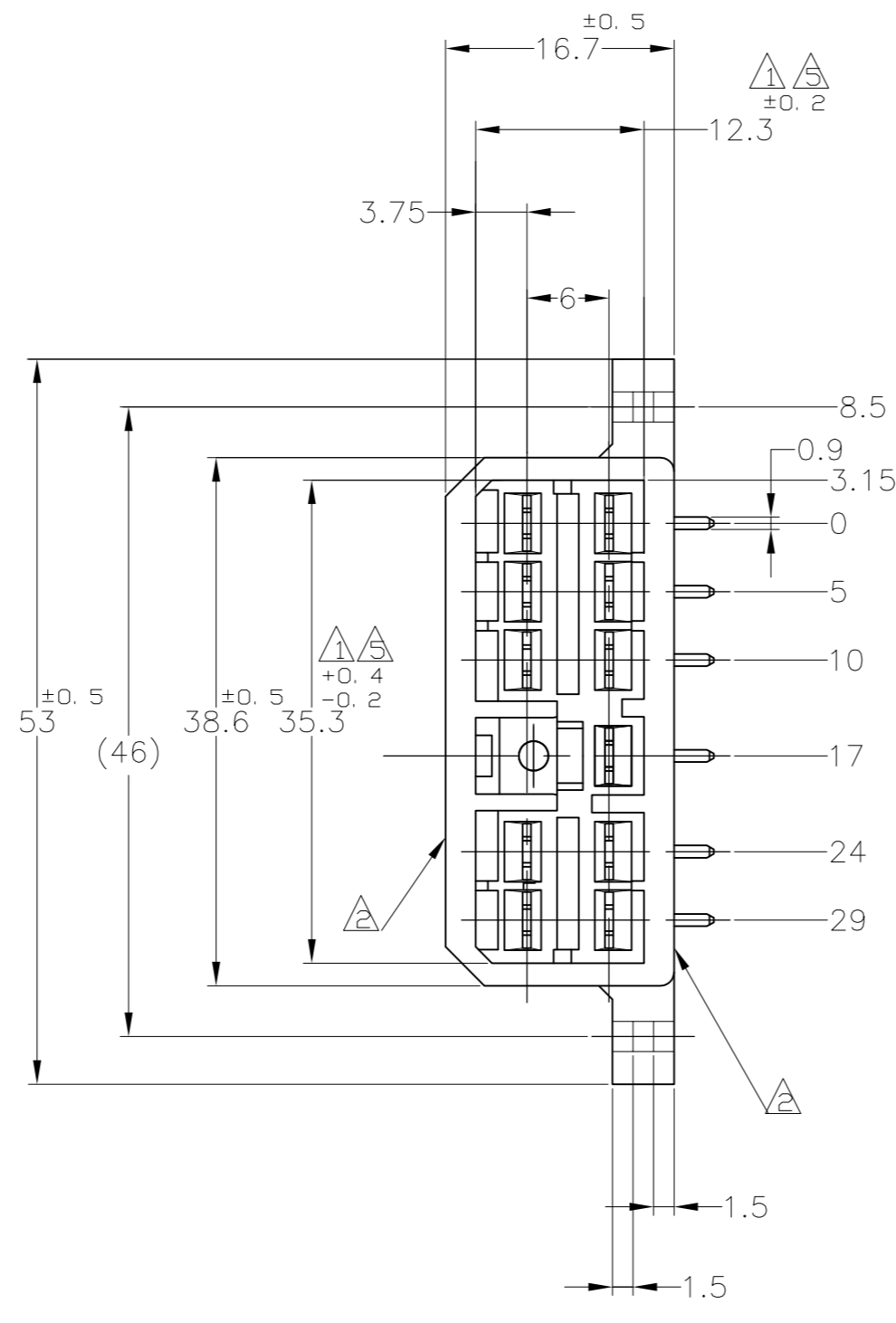
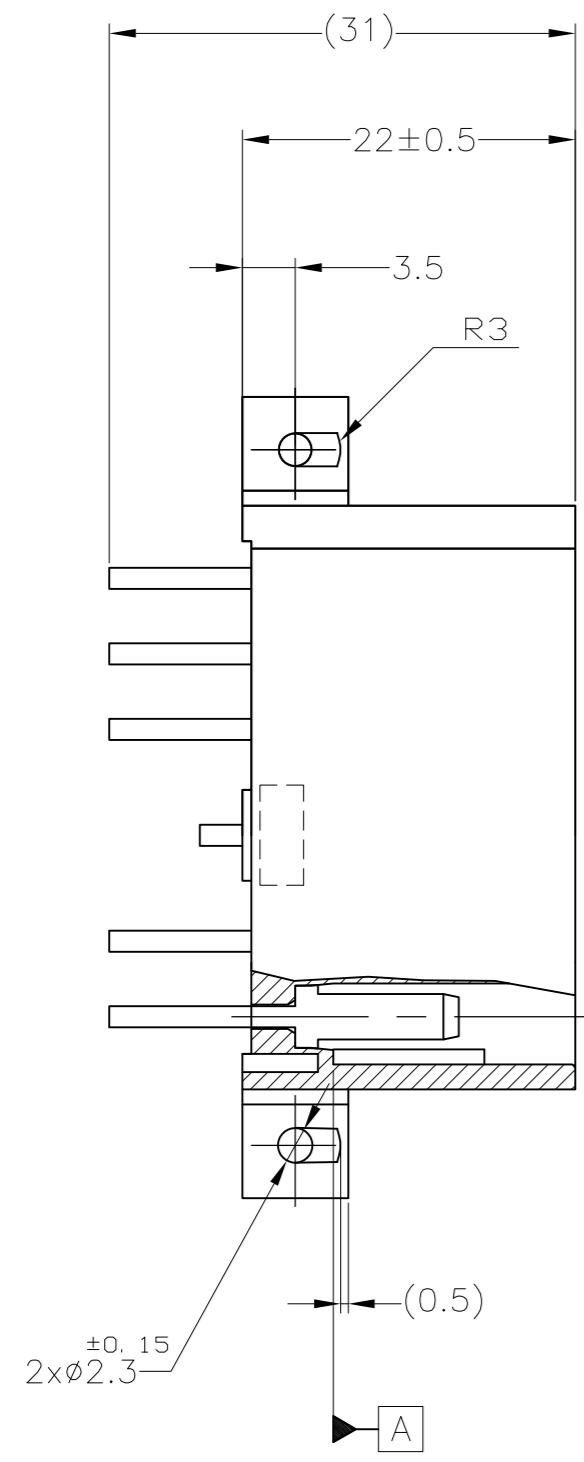


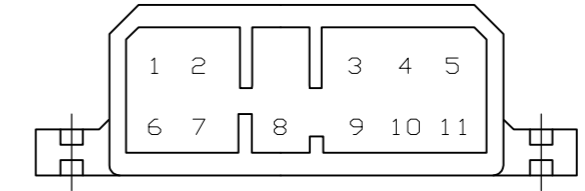
THIS DRAWING IS UNPUBLISHED. RELEASED FOR PUBLICATION
 © COPYRIGHT 2016 By Tyco Electronics Japan G.K. ALL RIGHTS RESERVED.

REVISIONS				
P	LTR	DESCRIPTION	DATE	APVD
G4	OBSOLETE2--1	ECR-16-003014	16AUG16	KF HY



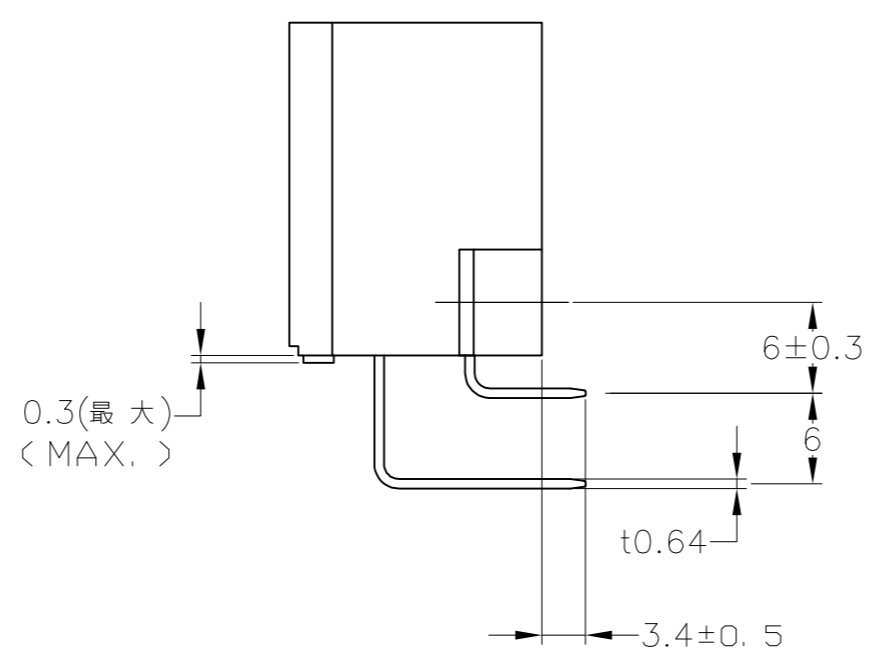
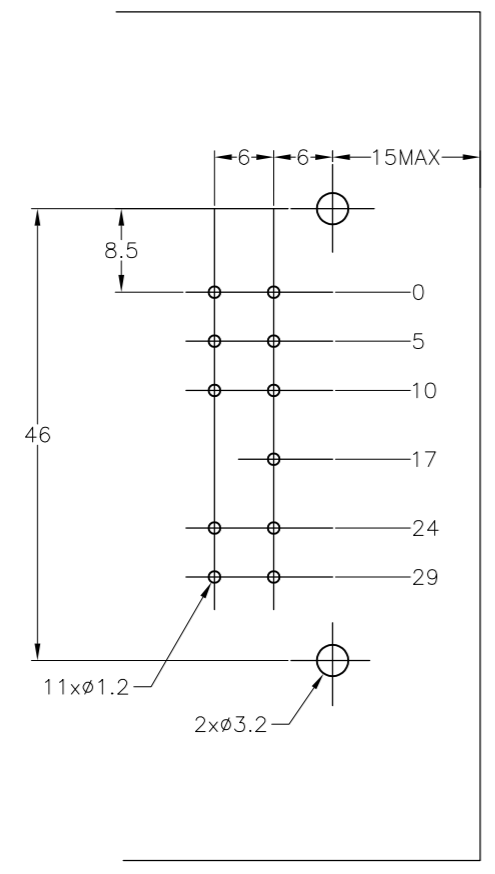
- 注記:
- ① 相手ハウジングと所定の機能を満たして嵌合できること。
 - ② フードの反りは0.2以内。
 - ③ プリント基板への取付けは JIS B1115 M3 種のタッピンネジで締め付けた後はんだ付けする。
 - ④ 適用製品規格: 108-5093
 - ⑤ A 面より 2mm の範囲で測定のこと。
 - ⑥ 相手ハウジングとの嵌合力は、29.4N以下
但し、リセプタクルコンタクトは含まない。
 - △ 金めっき位置番号: 下図参照のこと。

- NOTE:
- △ IN COUPLING WITH THE PLUG HOUSING MATING SATISFIES FUNCTION
 - △ WARPAGE 0.2 MAX.
 - ③ SOLDERING AFTER MOUNTING P.C.BOARD BY 3mmDIA TAPPING SCREW, SPECIFIED IN JIS B1115
 - ④ PRODUCT SPEC NO.108-5093
 - ⑤ TO BE MEASURED WITHIN 2mm FROM A
 - ⑥ IN COUPLING WITH THE PLUG HOUSING MATING FORCE 29.4N MAX. WITHOUT RECEPTACLE CONTACT
 - △ GOLD PLATED POSITION NUMBER.



プリント基板取付寸法図
(MOUNTING DIMENSIONS FOR P.C.BOARD)

1. 板厚, 1.6±0.15 (P.C.B. THICKNESS, 1.6±0.15)
2. 公差, ±0.1 (TOLERANCE, ±0.1)



CONTACT NO.	CONTACT FINISH	CONTACT FINISH	COLOR	PART NUMBER	
1~11	SELECTIVE-TIN (MATTE)	SELECTIVE GOLD (0.38μm MIN.)	NATURAL	2-5172038-1	
OBSOLETE	6~11	TIN-LEAD	SELECTIVE GOLD (0.38μm MIN.)	YELLOW	3-172038-7
		PRE-TIN			
OBSOLETE	1~11	TIN-LEAD	SELECTIVE GOLD (0.38μm MIN.)	GREEN	2-172038-4
OBSOLETE	1~11	TIN-LEAD	SELECTIVE GOLD (0.38μm MIN.)	NATURAL	2-172038-1
OBSOLETE	1~11	TIN-LEAD	SELECTIVE GOLD (0.76μm MIN.)	GREEN	1-172038-4
OBSOLETE	1~11	TIN-LEAD	SELECTIVE GOLD (0.76μm MIN.)	NATURAL	1-172038-1
OBSOLETE		PRE-TIN		YELLOW	172038-7
OBSOLETE		PRE-TIN		GRAY	172038-6
OBSOLETE		PRE-TIN		BLUE	172038-5
OBSOLETE		PRE-TIN		GREEN	172038-4
OBSOLETE		PRE-TIN		BROWN	172038-3
OBSOLETE		PRE-TIN		BLACK	172038-2
OBSOLETE		PRE-TIN		NATURAL	172038-1
GOLD PL. POSITION No. 金めっき位置番号		SOLDERING SIDE 半田付け部	CONTACT SIDE 接触部側	COLOR 色	PART NUMBER 製品型番
		CONTACT FINISH コンタクト仕上			

TOLERANCE UNLESS OTHERWISE SPECIFIED:
 一般公差
 0 <= X <= 10 : ±0.2
 10 <= X <= 30 : ±0.25
 30 <= X <= 100 : ±0.3
 ANGLE : ±3°

THIS DRAWING IS A CONTROLLED DOCUMENT. DWN T.SHINOHARA 31AUG07
 CHK K.BETSUI 31AUG07
 APVD K.BETSUI 31AUG07
 PRODUCT SPEC 製品規格
 APPLICATION SPEC 取付適用規格

TE Connectivity
 11P HORIZONTAL TYPE CAP HOUSING
 MULTI-INTERLOCK CONN.
 WIRE TO PCB

SIZE A2 CAGE CODE 00779 DRAWING NO. 172038
 WEIGHT 10.6 g
 CUSTOMER DRAWING SCALE 2:1 SHEET 1 OF 1 REV G4

X-ON Electronics

Largest Supplier of Electrical and Electronic Components

Click to view similar products for [Headers & Wire Housings](#) category:

Click to view products by [TE Connectivity](#) manufacturer:

Other Similar products are found below :

[892-18-020-10-001101](#) [58102-G61-06LF](#) [582553-1](#) [0009485154](#) [009176003701906](#) [0050291907](#) [LY20-4P-DT1-P1E-BR](#) [02.125.8002.8](#)
[609-3404](#) [61062-3](#) [61082-181009](#) [622-3653LF](#) [63453-116](#) [636-1030](#) [636-1427](#) [636-3427](#) [636-4007](#) [641938-9](#) [641991-4](#) [644827-2](#) [65817-](#)
[010LF](#) [65817-015LF](#) [65863-015LF](#) [66207-023LF](#) [67095-007LF](#) [67601157](#) [68645-018](#) [68648-049](#) [70.362.1628.0](#) [70-4210](#) [70-4226B](#) [70-](#)
[4853B](#) [707-5020](#) [707-5028](#) [71.350.2428.0](#) [71918-208LF](#) [71961-016LF](#) [733-134](#) [733-162](#) [754199-000](#) [760-3052](#) [787-8014-00](#) [79531-3000](#)
[FCN-360C032-B](#) [FCN-367T-T012/H](#) [FCN-723D010/2](#) [80.063.4001.1](#) [800-90-001-10-001000](#) [800-90-010-10-002000](#) [801-43-002-10-013000](#)