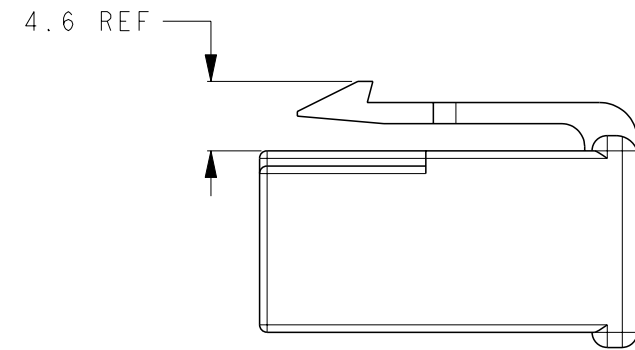
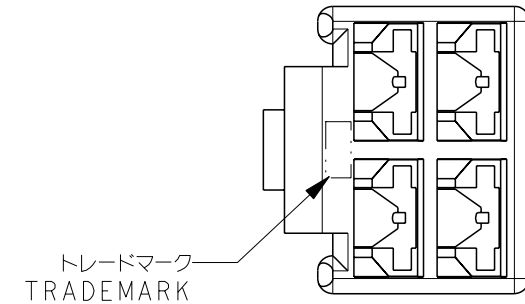
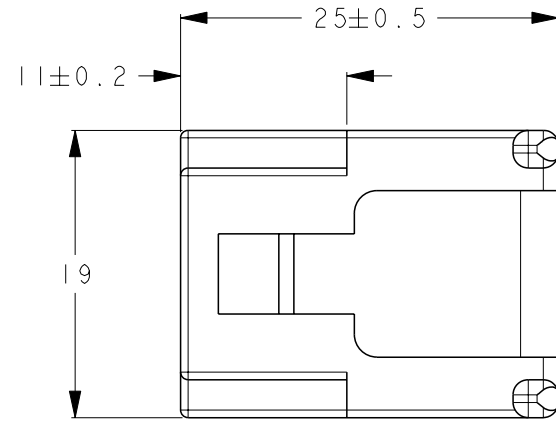
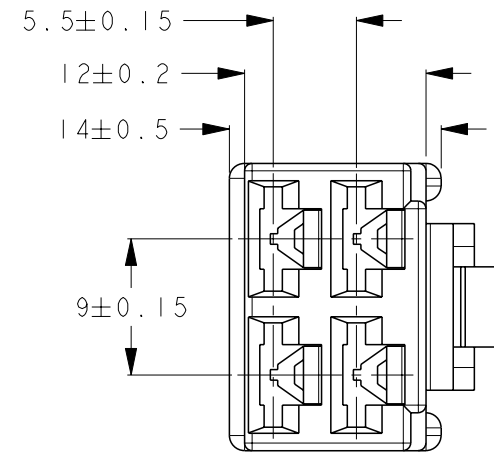


THIS DRAWING IS UNPUBLISHED. RELEASED FOR PUBLICATION 2010
 © COPYRIGHT 2010 BY Tyco Electronics Japan G.K. ALL RIGHTS RESERVED.

| LOC | DIST | REVISIONS | | | | | |
|-----|------|-----------|-----|-------------|-----------|-----|------|
| | | P | LTR | DESCRIPTION | DATE | DWN | APVD |
| J | - | | F2 | REVISED | 16APR2012 | K.S | N.Y |
| | | | | | | | |
| | | | | | | | |



- 1 嵌合相手ハウジング型番: 172133-□
- 2 適合端子型番: 170342-□, 170343-□, 170350-□
- 3 本品の材料はUL94難燃グレードV-0

- 1 MATING CAP HOUSING P/N: 172133-□
- 2 APPLIED CONTACT P/N: 170342-□, 170343-□, 170350-□
- 3 THIS ITEM IS MADE FROM MATERIAL RATED UL94 FLAME RETARDANCE V-0

| | |
|----------------|-------------------|
| 自然色 NATURAL | △3 1-172134-1 |
| 赤 RED | 172134-9 |
| 橙 ORANGE | 172134-8 |
| 黄 YELLOW | 172134-7 |
| 灰 GRAY | 172134-6 |
| 青 BLUE | 172134-5 |
| 緑 GREEN | 172134-4 |
| 茶 BROWN | 172134-3 |
| 黒 BLACK | 172134-2 |
| 自然色 NATURAL | 172134-1 |
| 色 COLOR | 型番 PART NUMBER |

| | | | | | |
|---|--|--------------------------------|--|--|-----------------|
| THIS DRAWING IS A CONTROLLED DOCUMENT. | | DWN Y. OKADA 20OCT2010 | | TE Connectivity | |
| DIMENSIONS: 単位: 耗 mm | | CHK S. YAMADA 20OCT2010 | | | |
| TOLERANCES UNLESS OTHERWISE SPECIFIED: 一般公差 ±0.25 | | APVD N. YAMASAKI 20OCT2010 | | NAME 名称 250シリーズハウジングランスコネクタ 4極プラグハウジング | |
| 0-PLC ± | | PRODUCT SPEC 108-5147 | | 250SERIES HOUSING LANCE CONNECTOR | |
| 1-PLC ± | | APPLICATION SPEC 114-5052 | | 4POS PLUG HOUSING | |
| 2-PLC ± | | WEIGHT | | SIZE A3 | CAGE CODE 00779 |
| 3-PLC ± | | MATERIAL 66ナイロン 66NYLLON | | DRAWING NO. C=172134 | RESTRICTED TO |
| 4-PLC ± | | FINISH 色: 表参照 COLOR: SEE TABLE | | SCALE 尺度 2:1 | SHEET 1 OF 1 |
| ANGLES ±3° | | CUSTOMER DRAWING | | REV F2 | |

X-ON Electronics

Largest Supplier of Electrical and Electronic Components

Click to view similar products for [Terminals](#) category:

Click to view products by [TE Connectivity](#) manufacturer:

Other Similar products are found below :

[00-054007-01074-6](#) [00-054007-70206-1](#) [00-054007-70210-8](#) [00-054007-70217-7](#) [00-054007-70226-9](#) [00-054007-70228-3](#) [00-054007-70248-1](#) [00-054007-70256-6](#) [00-054007-70301-3](#) [00-054007-70316-7](#) [0-0320562-0](#) [00-054007-49560-4](#) [00-054007-70209-2](#) [00-054007-70225-2](#) [00-054007-70227-6](#) [00-054007-70231-3](#) [00-054007-70241-2](#) [00-054007-70242-9](#) [00-054007-70244-3](#) [00-054007-70246-7](#) [00-054007-70263-4](#) [00-054007-70288-7](#) [00-054007-70290-0](#) [00-054007-70300-6](#) [00-054007-70304-4](#) [01-2065-1-0216](#) [01-2900-1-04412](#) [00581P0075](#) [600TS-10](#) [60205-1](#) [604200-1](#) [605601-1](#) [60598-1-CUT-TAPE](#) [61314-6-C](#) [61810-3](#) [61-S](#) [61-SN](#) [626-0194](#) [62-NBM-A](#) [62-SN](#) [62-SP](#) [63-S](#) [640179-1](#) [M55155/059I03](#) [M55155/079C01](#) [M55155/099H02](#) [M55155/109H01](#) [M55155/109H02](#) [M55155/12XH05](#) [M55155/16XH02](#)