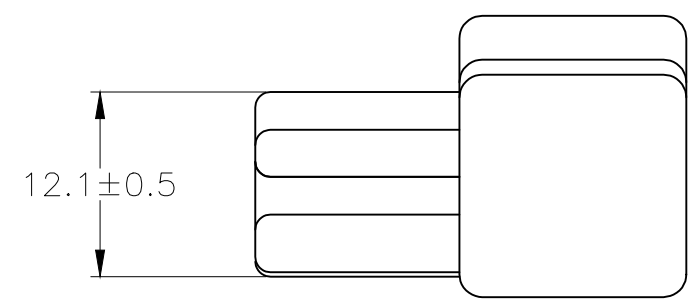
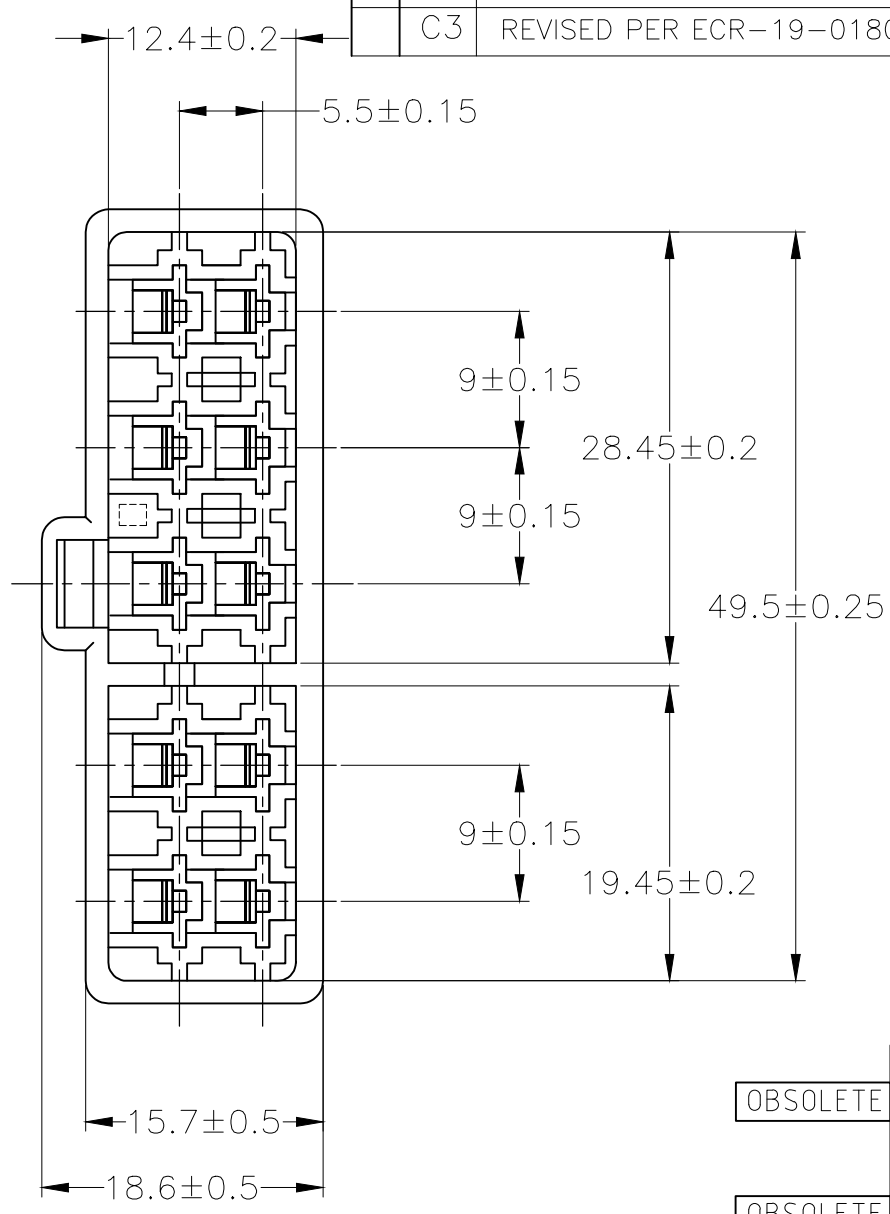
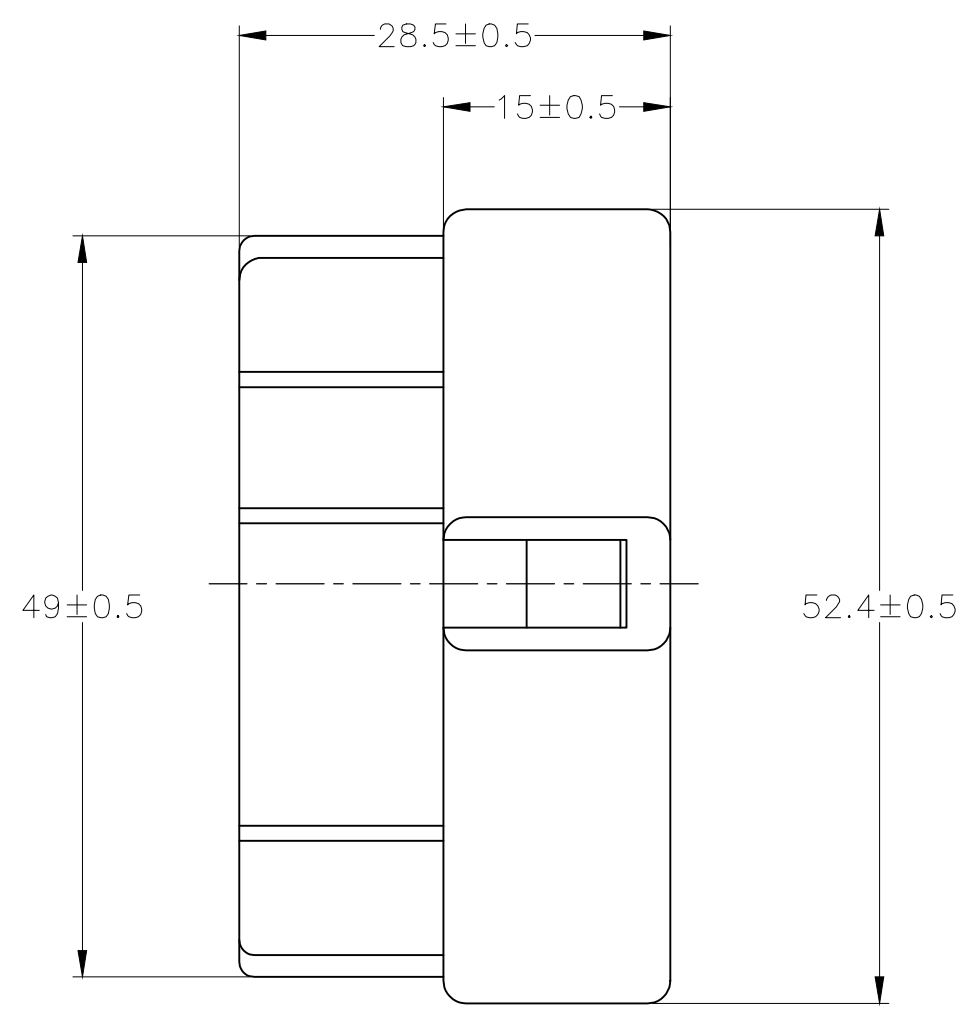
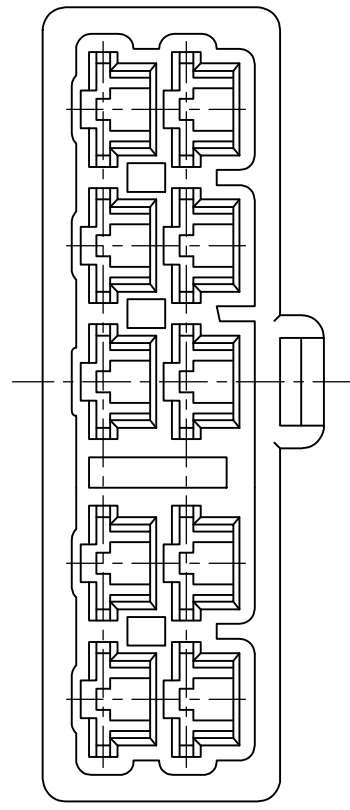


THIS DRAWING IS UNPUBLISHED. RELEASED FOR PUBLICATION
 © COPYRIGHT BY TYCO ELECTRONICS CORPORATION. ALL RIGHTS RESERVED.

LOC	DIST	REVISIONS						
		P	LTR	DESCRIPTION	DATE	DWN	APVD	
			C1	REDRAWN W/CORRECTION	FJ00-172137-1	14NOV00	TS	MT
			C2	REVISED PER ECO-09-024717		09NOV09	KK	AEG
			C3	REVISED PER ECR-19-018072		02DEC2019	SS	TD



OBSOLETE	LIGHT GRAY/淡灰	6-172137-6
	RED/赤	172137-9
	ORANGE/橙	172137-8
OBSOLETE	YELLOW/黄	172137-7
	GRAY/灰	172137-6
	BLUE/青	172137-5
OBSOLETE	GREEN/緑	172137-4
	BROWN/茶	172137-3
	BLACK/黒	172137-2
	NATURAL/自然色	172137-1
	COLOR/色	PN 型番

1. 嵌合する相手ハウジングは型番 172138
 2. 使用端子は型番 170340, 170341 及び 170349
1. THE MATING PLUG HOUSING: PN 172138
 2. APPLIED CONTACT: PN 170340, 170341 AND 170349
- △ OBSOLETE PARTS: OBSOLETE CIS STREAMLINING PER D.RENAUD/D.SINISI

THIS DRAWING IS A CONTROLLED DOCUMENT.

DIMENSIONS: 単位: 耗 MM	TOLERANCES UNLESS OTHERWISE SPECIFIED: 一般公差
	0 PLC ± - 1 PLC ± - 2 PLC ± - 3 PLC ± - 4 PLC ± - ANGLES ± -
MATERIAL 材料 6 NYLON	FINISH 仕上 COLOR: SEE TABLE

DWN	T.SHINOHARA	14NOV00
CHK	M.TSUKAKOSHI	14NOV00
APVD	M.TSUKAKOSHI	14NOV00
PRODUCT SPEC	製品規格	108-5153
APPLICATION SPEC	取付適用規格	114-5052
WEIGHT	9.6 g	

WIRE RANGE 抱合電線断面積 - INSULATION DIA 被覆外径 -

TE TE Connectivity

250 SERIES HOUSING LANCE CONNECTOR
10 POSITION CAP HOUSING

NAME 名称 -

SIZE A3 CAGE CODE 00779 DRAWING NO 番号 C-172137 RESTRICTED TO -

CUSTOMER DRAWING SCALE 尺度 2:1 SHEET 1 OF 1 REV C3

X-ON Electronics

Largest Supplier of Electrical and Electronic Components

Click to view similar products for [Terminals](#) category:

Click to view products by [TE Connectivity](#) manufacturer:

Other Similar products are found below :

[HT-13-10](#) [71M-250-32-NB](#) [01-2065-1-0216](#) [00581P0075](#) [M10-10RX](#) [M10BCK](#) [60205-1](#) [604200-1](#) [60598-1-CUT-TAPE](#) [60617-1-C](#) [60873-1](#) [M14-516R/SK](#) [M14-6RSX](#) [M18-8FBX](#) [M18-8R/LX](#) [M18BCK](#) [61314-6-C](#) [61-S](#) [61-SN-A](#) [62-NBM-A](#) [63-S](#) [640179-1](#) [640917-2-CUT-TAPE](#) [6501550002](#) [66107-2-C](#) [696683-1](#) [696834-1](#) [696861-1](#) [696931-1](#) [696999-1](#) [M8-516RK](#) [M86700006](#) [MA250DMFMX-A](#) [701-2007](#) [701-2307](#) [701-7761-03](#) [70F-110-32-PB](#) [718-N-A](#) [71M-187-20-NBL](#) [71M-250-32-NBL](#) [72F-187-20-NBL](#) [72M-250-32-NBL](#) [7310](#) [73F-250-32](#) [73F-250-32-NL](#) [F14-10C](#) [F-1M](#) [751-250](#) [76650-5002](#) [76828-149](#)