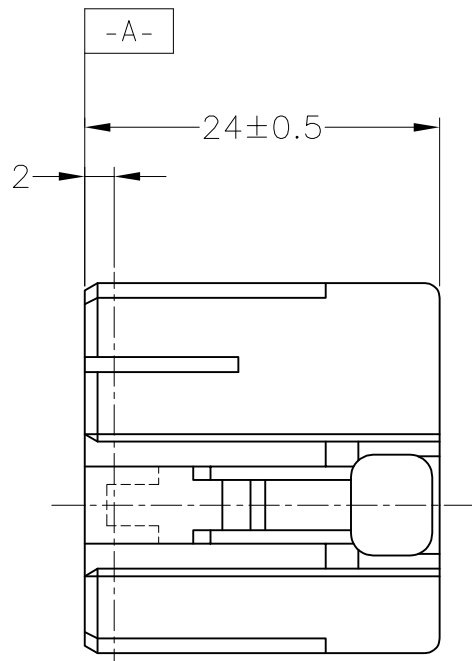
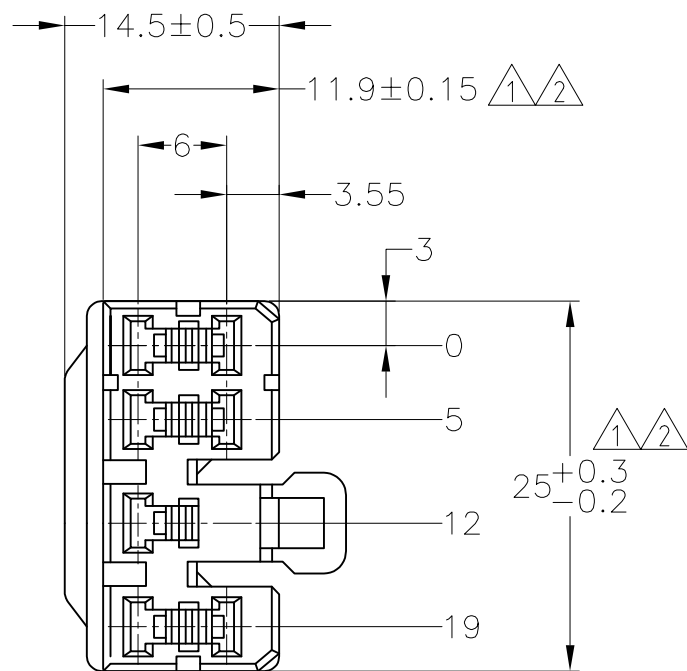


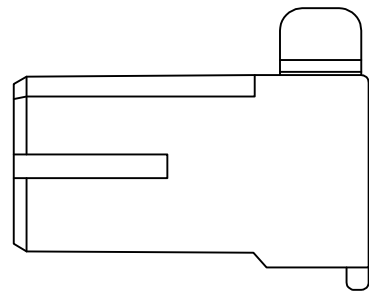
THIS DRAWING IS UNPUBLISHED. RELEASED FOR PUBLICATION
 © COPYRIGHT - By - ALL RIGHTS RESERVED.

LOC	DIST	REVISIONS						
		P	LTR	DESCRIPTION	DATE	DWN	APVD	
J	-	R		REDRAWN W/CHANGE	ECR-16-000305	08JAN2016	TS	KB



- ① TO BE MEASURED BETWEEN -A- AND 2mm
- ② TO BE MATES WITH PLUG HOUSING SMOOTHLY.
- 3. APPLICABLE CONTACT NO. 172773, 172775, ETC.
- 4. PRODUCT SPEC NO. : 108-5165, 108-5166
- 5. IN COUPLING WITH PLUG HOUSING 29.4N (3kg) MAX. WITHOUT RECEPTACLE CONTACT.

- ① -A- 面より2mmの範囲で測定
- ② 相手ハウジングと所定の機能を満たして嵌合できること。
- 3. 内装するリセパタクルコンタクトは型番172773, 172775 他。
- 4. 製品規格 : 108-5165, 108-5166
- 5. 相手ハウジングとの嵌合力は29.4N (3kg) 以下。但しリセパタクルコンタクトは含まない。



	YELLOW	172495-7
	GRAY	172495-6
	BLUE	172495-5
OBSELETE	GREEN	172495-4
	BROWN	172495-3
	BLACK	172495-2
	NATURAL	172495-1
	COLOR	PART NUMBER

TOLERANCE UNLESS OTHERWISE SPECIFIED:
一般公差

0 < x ≤ 10	: ±0.2
10 < x ≤ 30	: ±0.25
30 < x ≤ 100	: ±0.3
ANGLE ; 角度	: ±3°

THIS DRAWING IS A CONTROLLED DOCUMENT.		DWN T.SHINOHARA 08JAN2016	TE Connectivity													
DIMENSIONS: mm		CHK K.BETSUI 08JAN2016														
TOLERANCES UNLESS OTHERWISE SPECIFIED:		APVD K.BETSUI 08JAN2016	NAME MULTI INTER LOCK CONNECTOR MK-II 7POSITION PLUG HOUSING													
<table border="1"> <tbody> <tr><td>0 PLC</td><td>± -</td></tr> <tr><td>1 PLC</td><td>± -</td></tr> <tr><td>2 PLC</td><td>± -</td></tr> <tr><td>3 PLC</td><td>± -</td></tr> <tr><td>4 PLC</td><td>± -</td></tr> <tr><td>ANGLES</td><td>± -</td></tr> </tbody> </table>		0 PLC	± -	1 PLC	± -	2 PLC	± -	3 PLC	± -	4 PLC	± -	ANGLES	± -	PRODUCT SPEC SEE NOTE	RESTRICTED TO	
0 PLC	± -															
1 PLC	± -															
2 PLC	± -															
3 PLC	± -															
4 PLC	± -															
ANGLES	± -															
MATERIAL NYLON		FINISH -	WEIGHT -	SIZE A3												
		APPLICATION SPEC -		CAGE CODE 00779												
		CUSTOMER DRAWING		DRAWING NO C=172495												
		SCALE 2:1		SHEET 1 of 1												
		REV R														

X-ON Electronics

Largest Supplier of Electrical and Electronic Components

Click to view similar products for [Automotive Connectors](#) category:

Click to view products by [TE Connectivity](#) manufacturer:

Other Similar products are found below :

[003-018-000](#) [60403001](#) [60993906-B](#) [M902-2131](#) [M902-2161](#) [M902-2344](#) [72.330.1035.1](#) [73.353.4028.0](#) [F119300-B](#) [F166900](#) [F258300-B](#)
[F358300-B](#) [F407400](#) [F444110](#) [F487000](#) [F509500B-B](#) [827153-1](#) [8N1515-32-24P](#) [9-1326729-8](#) [925474-1](#) [928905-1](#) [964562-4](#) [968782-1](#)
[GT17SA-8DS-HU](#) [98891-1012](#) [98947-1016](#) [12004147](#) [12004475-L](#) [12010290](#) [12010309-B](#) [12015454](#) [12020219-B](#) [12041318-B](#) [12052225-](#)
[L](#) [12052466](#) [12064869](#) [12004327-B](#) [12015308](#) [12015384](#) [12015909](#) [1-21030-1](#) [12041254](#) [12041318](#) [12047946-B](#) [12047957](#) [12047957-L](#)
[12059473](#) [12066261](#) [12110546](#) [12110546-B](#)