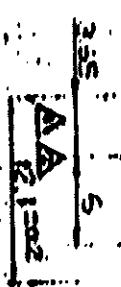
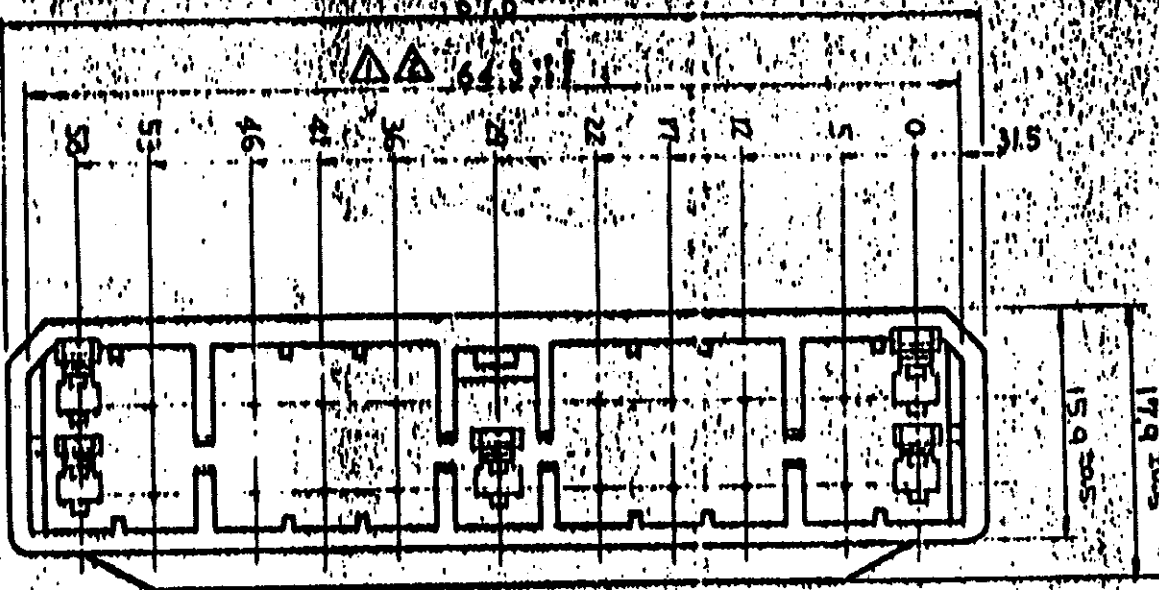
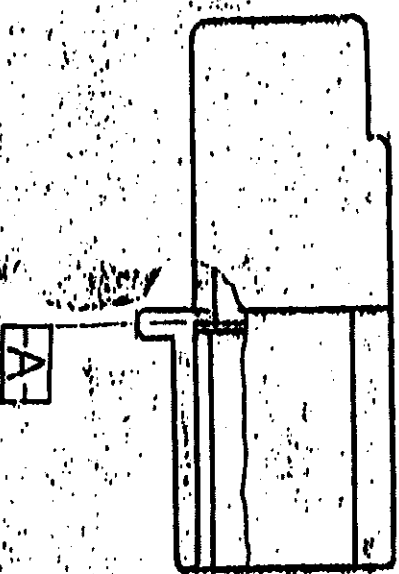
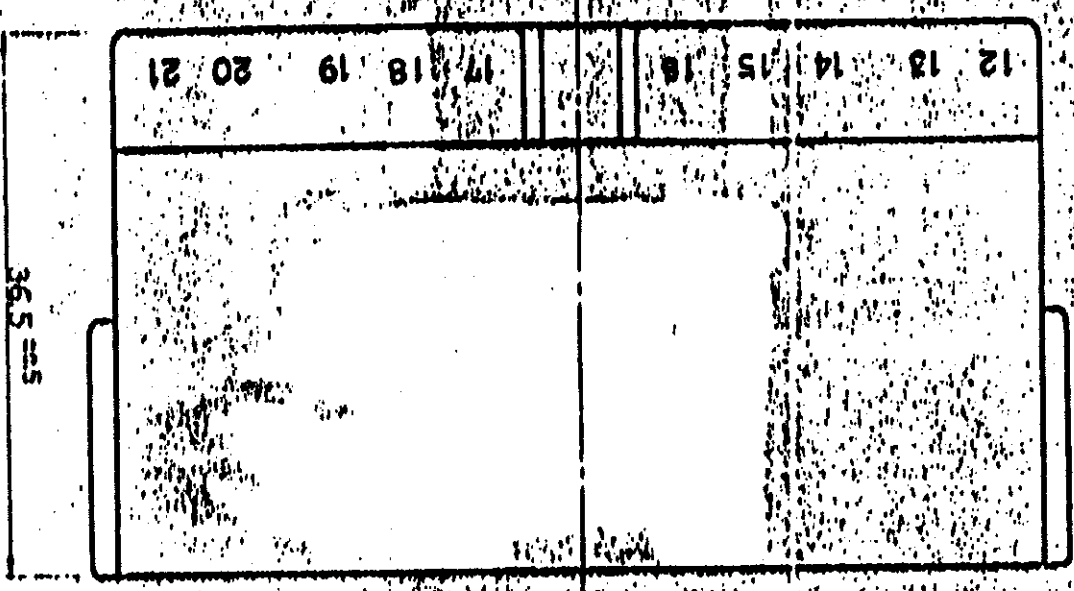


PRINT DIET

DIMENSIONS IN MM DO NOT SCALE PRINT

7 3 2



NOTES

- △ TO BE MEASURED WITH IN ZOOM FROM [A-]
- △ IN COUPLING WITH THE PLUG HOUSING SATISFIES FUNCTION.
- 3. APPLIED CONTACT PA; 172777, 172779
- 4. PRODUCT SPEC No; 108-5166
- 5. IN COUPLING WITH THE PLUG HOUSING HAVING FORCE 3kg MAX WITHOUT THE CONTACT.

- △ [A] 5.1mmの範囲で測定
- △ 5.1mmの範囲で測定
- 3. 実装するプラグハウジング番号: 172777, 172779 等。
- 4. 実装規格: No. 108-5166
- 5. 実装プラグハウジングの接触力は 3kg以下。但しプラグハウジングは 5.1mm

①

色 (Color)	色 (PA)	色 (Color)
黒 (BLACK)	-1	黒 (BLACK)
茶 (BROWN)	-2	茶 (BROWN)
緑 (GREEN)	-3	緑 (GREEN)
青 (BLUE)	-4	青 (BLUE)
赤 (RED)	-5	赤 (RED)
黄 (YELLOW)	-6	黄 (YELLOW)

REV	DATE	BY	CHKD	REVISION RECORD
0				OR. C. K. I. D. A. R. E.

Copyright © 1982  
Copyright © 1982  
ALL RIGHTS RESERVED.

AMMP | TOKYO, JAPAN

172510

REV A

C-172510

CUSTOMER DRAWING

## X-ON Electronics

Largest Supplier of Electrical and Electronic Components

*Click to view similar products for [Automotive Connectors](#) category:*

*Click to view products by [TE Connectivity](#) manufacturer:*

Other Similar products are found below :

[003-018-000](#) [60403001](#) [60993906-B](#) [M902-2131](#) [M902-2161](#) [72.330.1035.1](#) [73.353.4028.0](#) [F119300-B](#) [F166900](#) [F258300-B](#) [F358300-B](#)  
[F407400](#) [F444110](#) [F487000](#) [F509500B-B](#) [827153-1](#) [8N1515-32-24P](#) [9-1326729-8](#) [925474-1](#) [928905-1](#) [964562-4](#) [968782-1](#) [GT17SA-8DS-](#)  
[HU](#) [98891-1012](#) [98947-1016](#) [12004147](#) [12004475-L](#) [12010290](#) [12010309-B](#) [12015454](#) [12020219-B](#) [12020308](#) [12041318-B](#) [12052225-L](#)  
[12052466](#) [12059125](#) [12064869](#) [12004327-B](#) [12010503-B](#) [12015308](#) [12015384](#) [12015909](#) [1-21030-1](#) [12041254](#) [12041318](#) [12047946-B](#)  
[12047957](#) [12047957-L](#) [12059473](#) [12066261](#)